

Cast Copper Lay-In Lugs

TYPE LI-C



FEATURES AND BENEFITS

- Lay-in design allows for easy conductor installation
- Body manufactured from high copper content alloy
- Electro-tin plated body and stainless steel set screw assure minimum contact resistance and protection against corrosion
- Side entrance design permits the quick installation of a continuous conductor run to multiple locations
- Range-taking: accommodates copper conductor sizes 4 str. - 14 sol.
- Excellent choice for use on grounding conductors in conjunction with photovoltaic modules and mounting systems
- Suitable for direct burial in earth or embedment in concrete
- Listed to and comply with the following standards: UL 467, CSA C22.2NO.41-13, UL 2703, and ULC C1703

Over 30,000 variations of quality
connectors for any industry

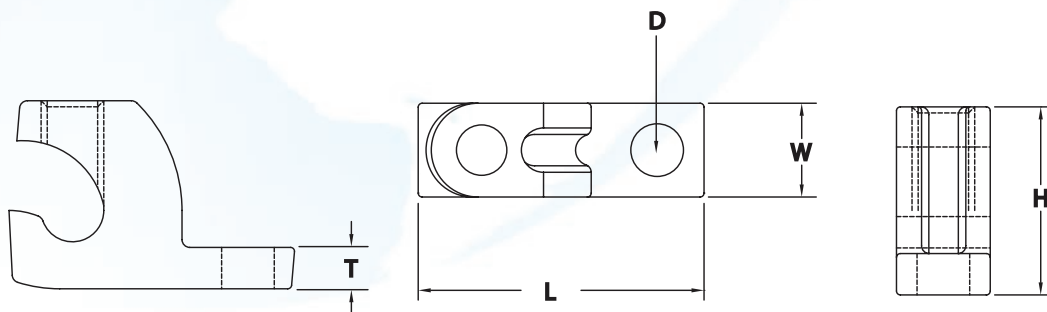
www.penn-union.com


PennUnionTM
CONNECTING YOUR TOMORROW.TM



Cast Copper Lay-In Lugs TYPE LI-C

CATALOG NUMBER	COPPER CONDUCTOR RANGE	NO. OF HOLES IN PAD	NO. OF CONDUCTORS	APPROXIMATE DIMENSIONS (IN.)				
				H	L	W	T	D Dia.
LI-50S-CU-DB-C	4 Str. - 14 Sol.	1	1	.75	1.14	.38	.16	.21
LI-50S-CU-DB-CM6	4 Str. - 14 Sol.	1	1	.75	1.14	.38	.16	.26



229 Waterford Street • Edinboro, PA 16412 USA

Phone: 814.734.1631 • Fax: 814.734.4946

Email: info@penn-union.com • www.penn-union.com