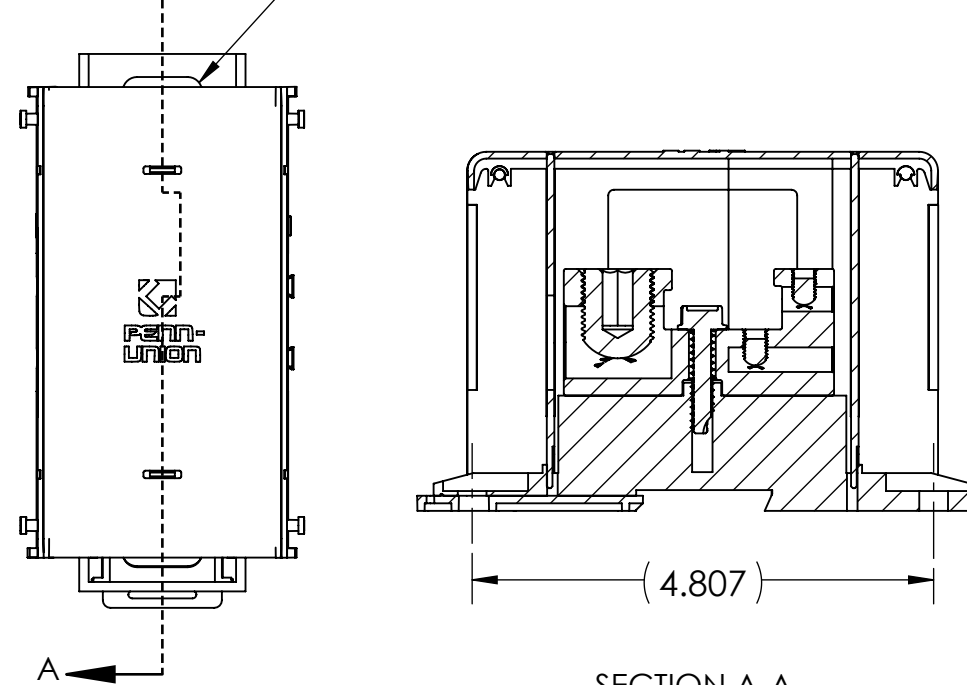


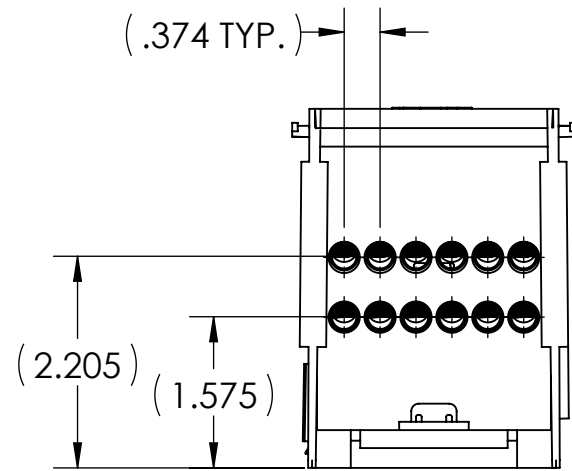


LINE SIDE				LOAD SIDE			
# OF PORTS	WIRE RANGE	HEX SIZE	INSTALL TORQUE (IN•LB)	# OF PORTS	WIRE RANGE	HEX SIZE	INSTALL TORQUE (IN•LB)
1	350 MCM-6 AWG	5/16	375	12	4-14 AWG	SLOTTED	4-8 AWG - 35 10-14 AWG - 20

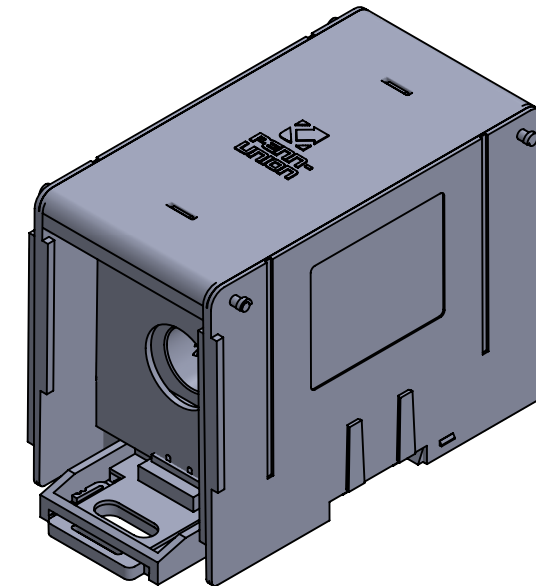
2X 0.300 x 0.827 MOUNTING SLOT



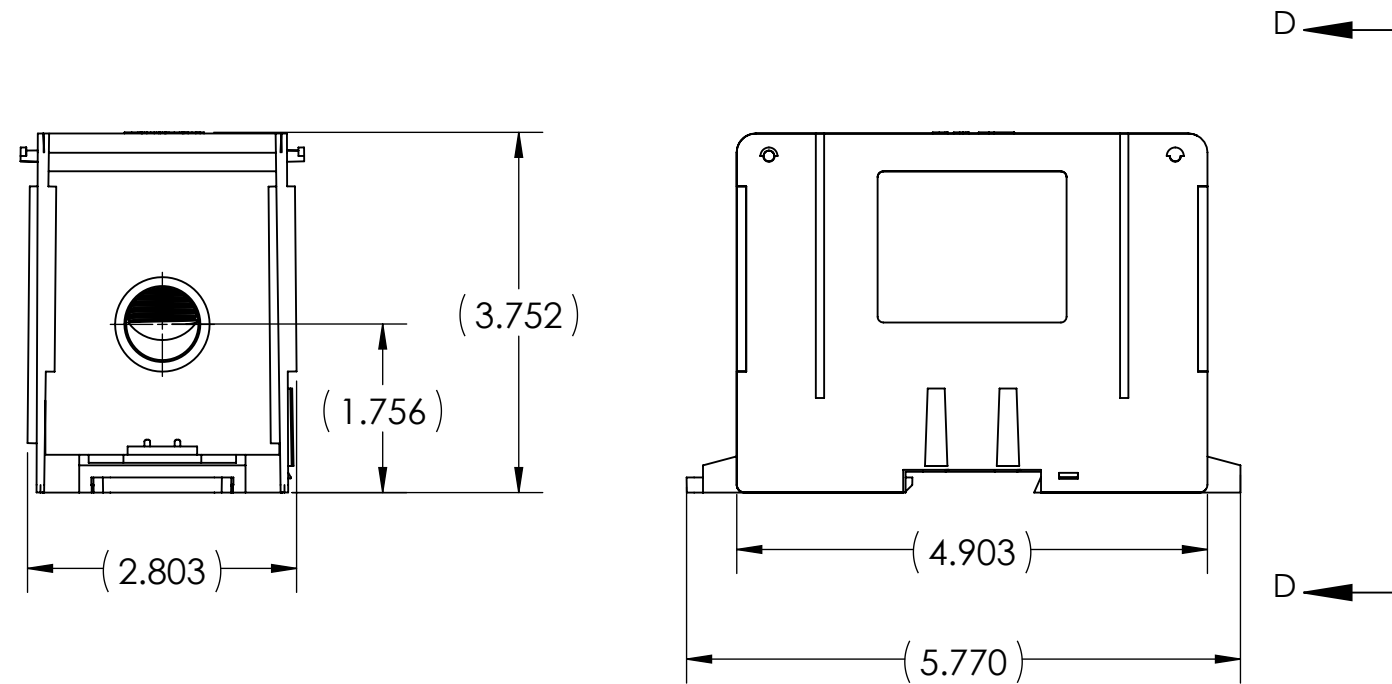
SECTION A-A



VIEW D-D



- METAL STAMP TO READ:
- 350-6
  - 4-14
  - AL9CU
  - 112-350



NOTES:

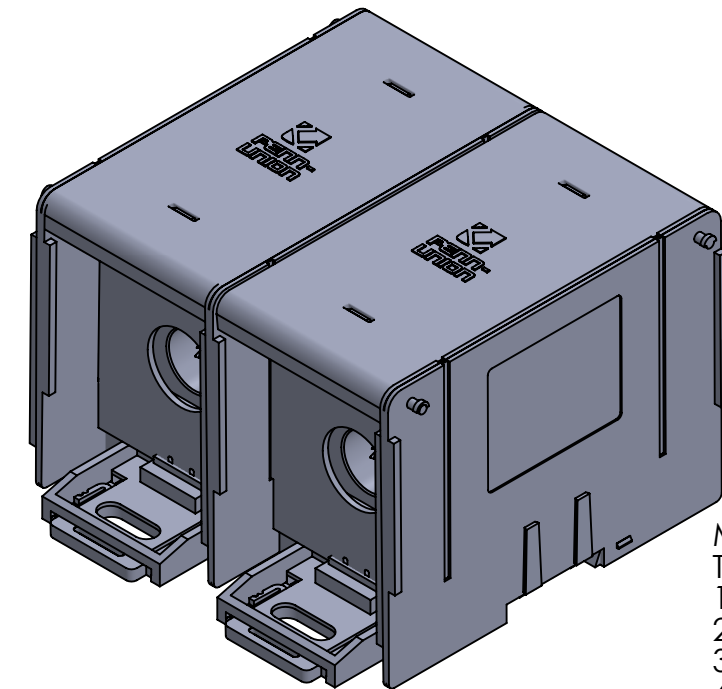
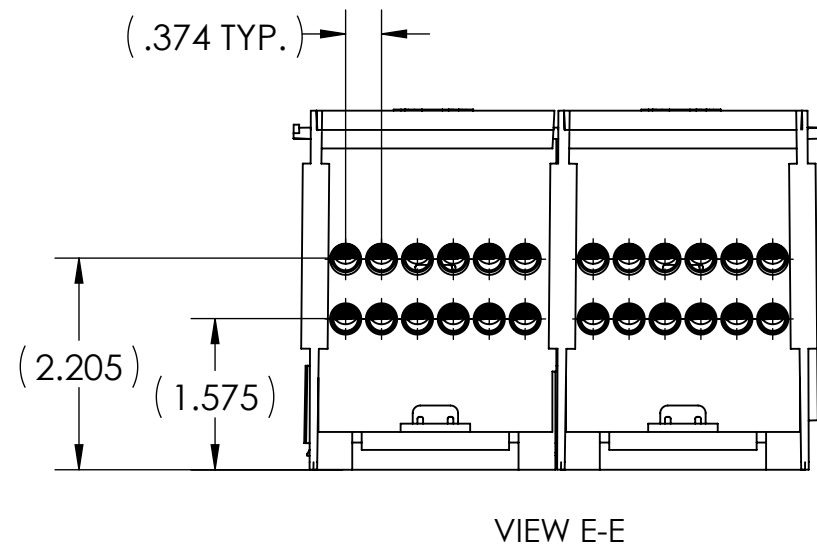
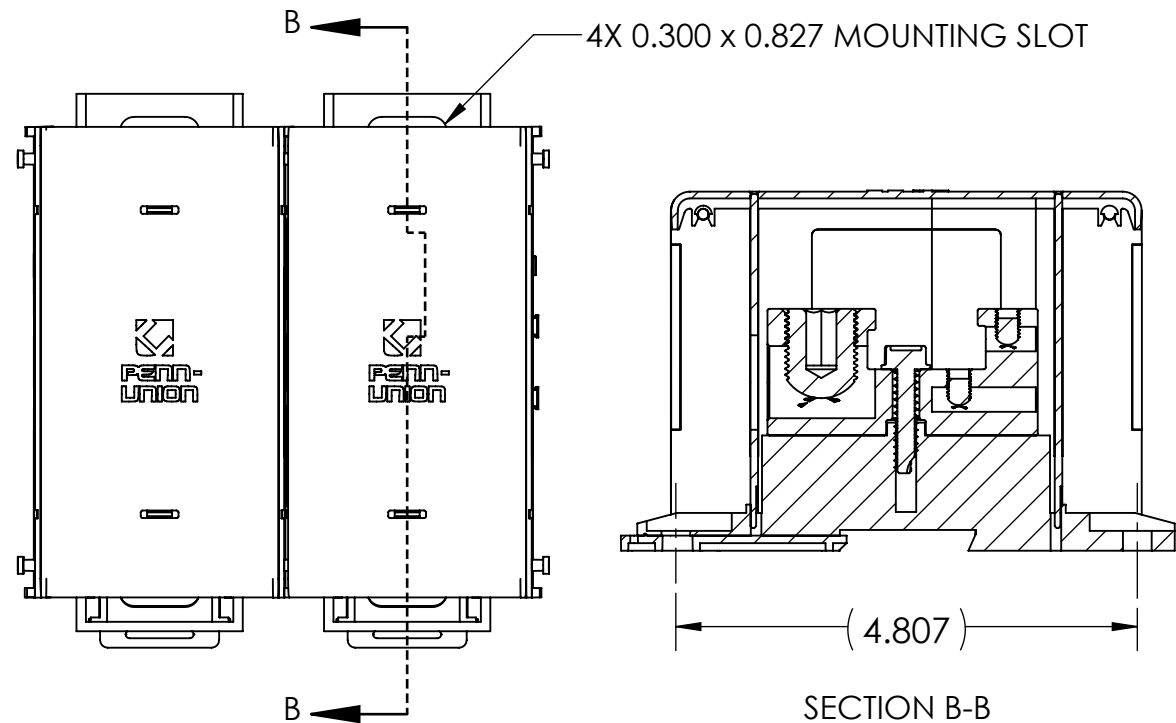
- ALL DIMENSIONS IN INCHES UNLESS OTHERWISE SPECIFIED
- APPROXIMATE ASSEMBLY WEIGHT: .742 LB
- SNAP LOCK MODULAR DESIGN ALLOWS FOR INDIVIDUAL BLOCKS TO BE EASILY ASSEMBLED
- CONNECTOR MANUFACTURED FROM HIGH STRENGTH TIN PLATED ALUMINUM
- INSULATING BASE AND SIDE COVERS ARE MANUFACTURED FROM GLASS REINFORCED NYLON 616
- BLOCKS COME COMPLETE WITH CLEAR POLYCARBONATE COVERS AND FINGER SAFE COVERS
- cULus LISTED PER UL 1953 FOR COPPER AND ALUMINUM CONDUCTORS AT 90°C AND 600 V
- AMP RATING PER POLE: 310
- FLAMMABILITY RATING PER UL 94V-0
- INTRUSION PROTECTION COMPLIANT WITH IEC 60529 AND IP-20
- UL ASSIGNED SHORT CIRCUIT CURRENT RATING OF 100,000 AMPS WHEN PROPERLY FUSED
- CONNECTORS ARE MANUFACTURED WITH TWO SIDE WALL LABELS THAT SPECIFY WIRE RANGE, INSTALLATION TORQUE, ELECTRICAL RATINGS, AND FUSE INFORMATION

NO.	ECN	DATE
REVISIONS		

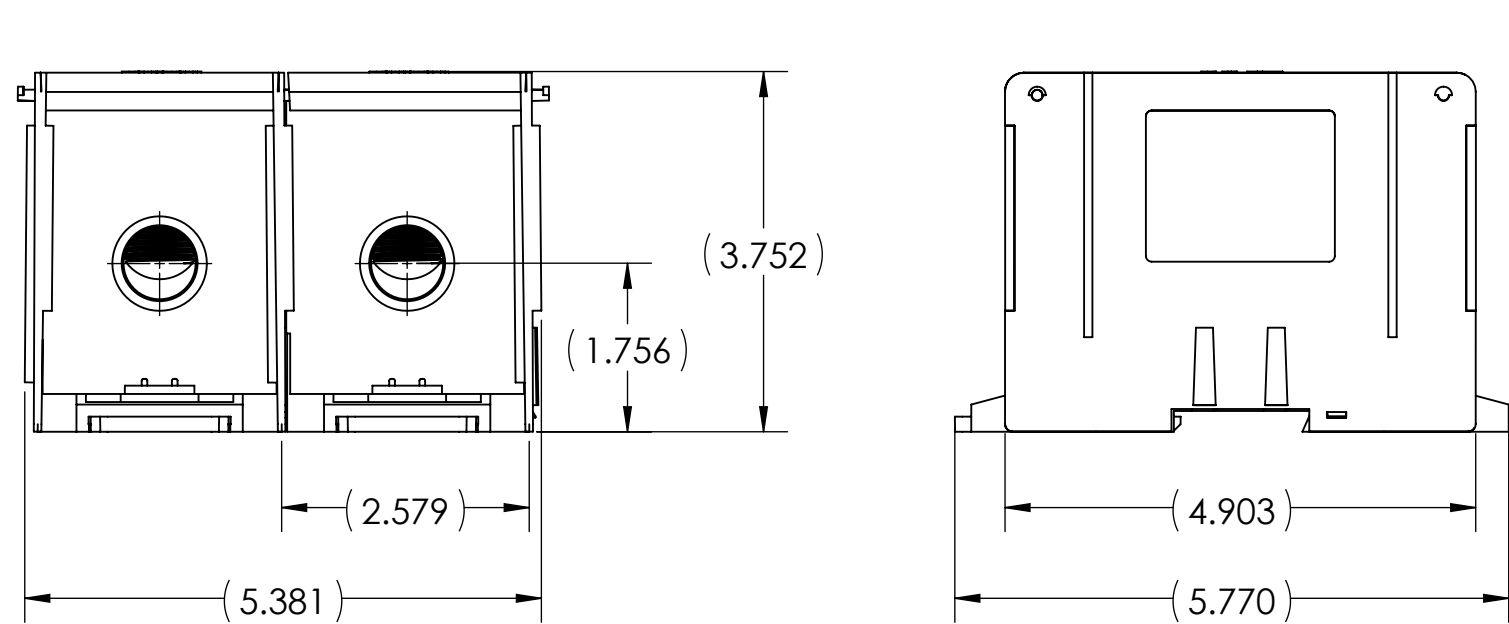
1	ALUMINUM DISTRIBUTION BLOCK	
QTY.	PT.	NAME OR DESCRIPTION
		ALUMINUM DISTRIBUTION BLOCK for 350 MCM - 6 AWG TO 4 - 14 AWG
REF. DWG'S: 5J25-96462		H:\5J25\APDB-112-350
DRAWN BY: CLT		DATE: 7/28/2023
SCALE: 1:2		CHK'D: QJB
SIZE: B		INTERPRET PER ASME Y14.5-2009
DWG. NO. <b>APDB-112-350</b>		FILE: 5J25
229 WATERFORD STREET EDINBORO, PA 16412 USA		REV. -
SHEET 1 OF 3		



LINE SIDE				LOAD SIDE			
# OF PORTS	WIRE RANGE	HEX SIZE	INSTALL TORQUE (IN•LB)	# OF PORTS	WIRE RANGE	HEX SIZE	INSTALL TORQUE (IN•LB)
1	350 MCM-6 AWG	5/16	375	12	4-14 AWG	SLOTTED	4-8 AWG - 35 10-14 AWG - 20



METAL STAMP TO READ:  
1. 350-6  
2. 4-14  
3. AL9CU  
4. 112-350



NOTES:

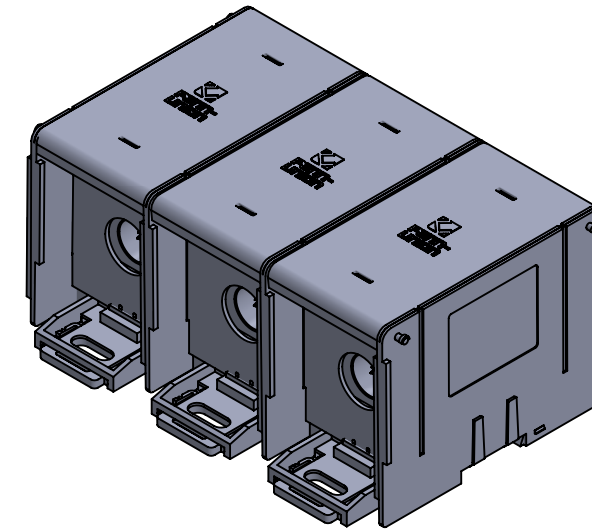
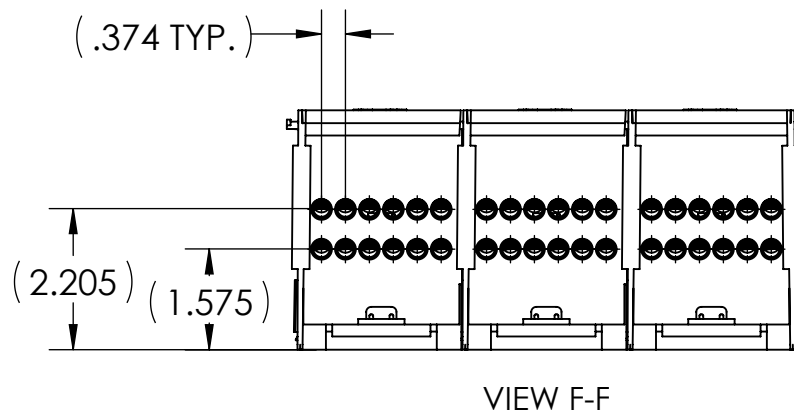
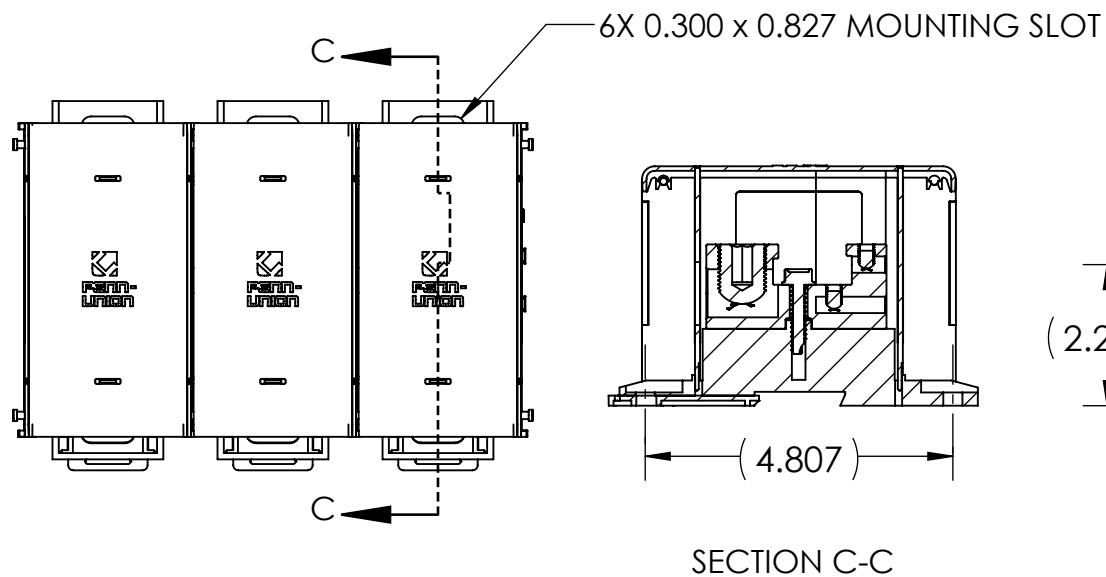
- ALL DIMENSIONS IN INCHES UNLESS OTHERWISE SPECIFIED
- APPROXIMATE ASSEMBLY WEIGHT: 1.387 LB
- SNAP LOCK MODULAR DESIGN ALLOWS FOR INDIVIDUAL BLOCKS TO BE EASILY ASSEMBLED
- CONNECTOR MANUFACTURED FROM HIGH STRENGTH TIN PLATED ALUMINUM
- INSULATING BASE AND SIDE COVERS ARE MANUFACTURED FROM GLASS REINFORCED NYLON 616
- BLOCKS COME COMPLETE WITH CLEAR POLYCARBONATE COVERS AND FINGER SAFE COVERS
- CULUS LISTED PER UL 1953 FOR COPPER AND ALUMINUM CONDUCTORS AT 90°C AND 600 V
- AMP RATING PER POLE: 310
- FLAMMABILITY RATING PER UL 94V-0
- INTRUSION PROTECTION COMPLIANT WITH IEC 60529 AND IP-20
- UL ASSIGNED SHORT CIRCUIT CURRENT RATING OF 100,000 AMPS WHEN PROPERLY FUSED
- CONNECTORS ARE MANUFACTURED WITH TWO SIDE WALL LABELS THAT SPECIFY WIRE RANGE, INSTALLATION TORQUE, ELECTRICAL RATINGS, AND FUSE INFORMATION

1	ALUMINUM DISTRIBUTION BLOCK	
QTY.	PT.	NAME OR DESCRIPTION
		ALUMINUM DISTRIBUTION BLOCK for 350 MCM - 6 AWG TO 4 - 14 AWG
REF. DWG'S: 5J25-96462		H:\5J25\APDB-112-350
DRAWN BY: CLT		DATE: 7/28/2023
SCALE: 1:2		CHK'D: QJB
SIZE: B		FILE: 5J25
DWG. NO. <b>APDB-112-350</b>		REV. -
CAT. NO. <b>APDB-112-350-2</b>		SHEET 2 OF 3
 229 WATERFORD STREET EDINBORO, PA 16412 USA		

NO.	ECN	DATE
REVISIONS		



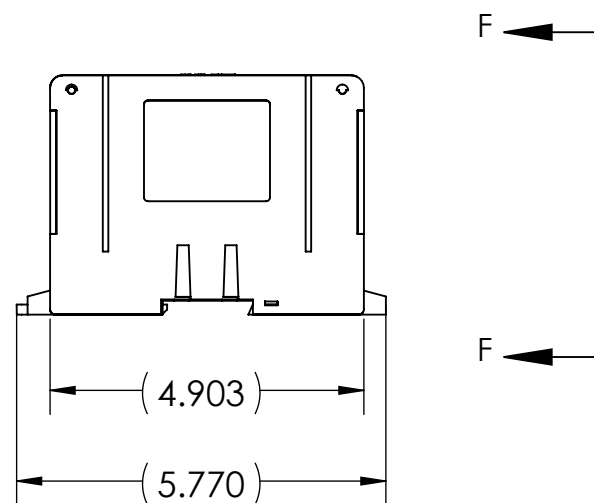
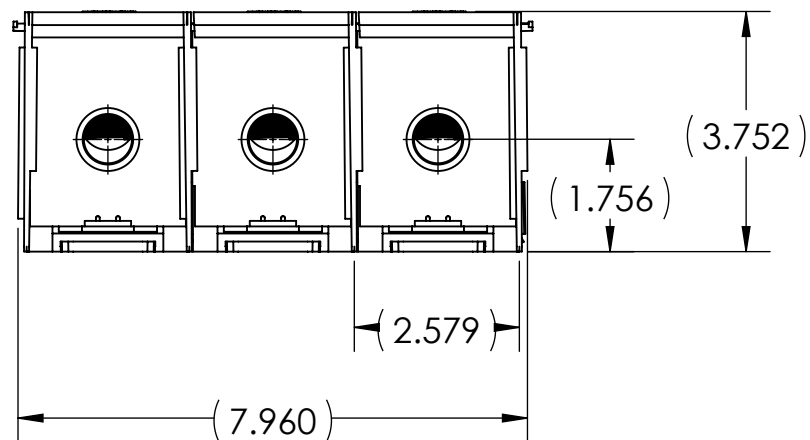
LINE SIDE				LOAD SIDE			
# OF PORTS	WIRE RANGE	HEX SIZE	INSTALL TORQUE (IN•LB)	# OF PORTS	WIRE RANGE	HEX SIZE	INSTALL TORQUE (IN•LB)
1	350 MCM-6 AWG	5/16	375	12	4-14 AWG	SLOTTED	4-8 AWG - 35 10-14 AWG - 20



METAL STAMP TO READ:  
 1. 350-6  
 2. 4-14  
 3. AL9CU  
 4. 112-350

NOTES:

- ALL DIMENSIONS IN INCHES UNLESS OTHERWISE SPECIFIED
- APPROXIMATE ASSEMBLY WEIGHT: 2.033 LB
- SNAP LOCK MODULAR DESIGN ALLOWS FOR INDIVIDUAL BLOCKS TO BE EASILY ASSEMBLED
- CONNECTOR MANUFACTURED FROM HIGH STRENGTH TIN PLATED ALUMINUM
- INSULATING BASE AND SIDE COVERS ARE MANUFACTURED FROM GLASS REINFORCED NYLON 616
- BLOCKS COME COMPLETE WITH CLEAR POLYCARBONATE COVERS AND FINGER SAFE COVERS
- cULus LISTED PER UL 1953 FOR COPPER AND ALUMINUM CONDUCTORS AT 90°C AND 600 V
- AMP RATING PER POLE: 310
- FLAMMABILITY RATING PER UL 94V-0
- INTRUSION PROTECTION COMPLIANT WITH IEC 60529 AND IP-20
- UL ASSIGNED SHORT CIRCUIT CURRENT RATING OF 100,000 AMPS WHEN PROPERLY FUSED
- CONNECTORS ARE MANUFACTURED WITH TWO SIDE WALL LABELS THAT SPECIFY WIRE RANGE, INSTALLATION TORQUE, ELECTRICAL RATINGS, AND FUSE INFORMATION



1	ALUMINUM DISTRIBUTION BLOCK	
QTY.	PT.	NAME OR DESCRIPTION
		ALUMINUM DISTRIBUTION BLOCK for 350 MCM - 6 AWG TO 4 - 14 AWG
REF. DWG'S: 5J25-96462		H:\5J25\APDB-112-350
DRAWN BY: CLT		DATE: 7/28/2023
SCALE: 1:3		CHK'D: QJB
INTERPRET PER ASME Y14.5-2009		FILE: 5J25
SIZE: B		DWG. NO. <b>APDB-112-350</b>
REV. -		SHEET 3 OF 3

NO.	ECN	DATE
REVISIONS		