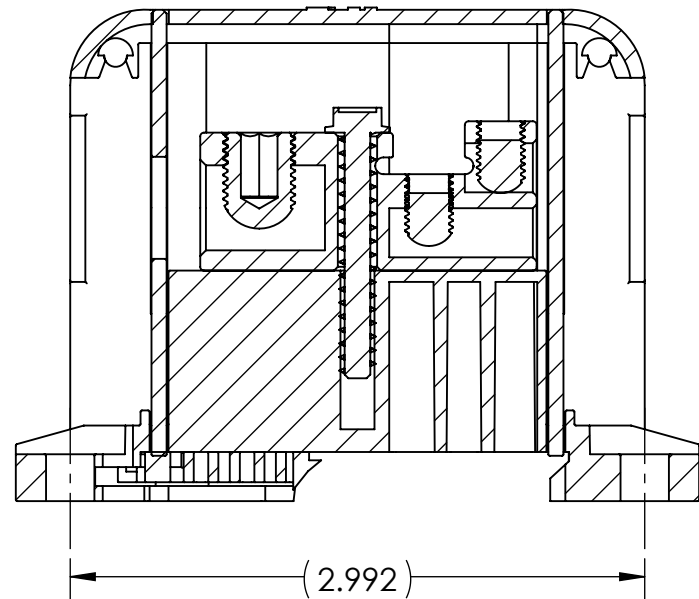
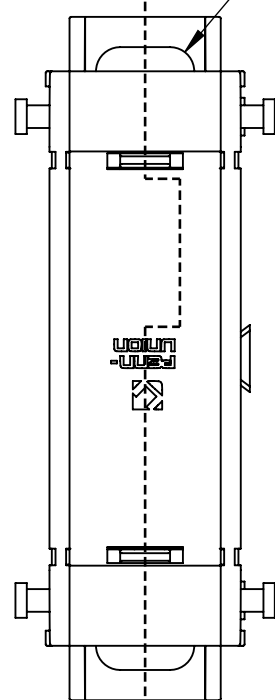


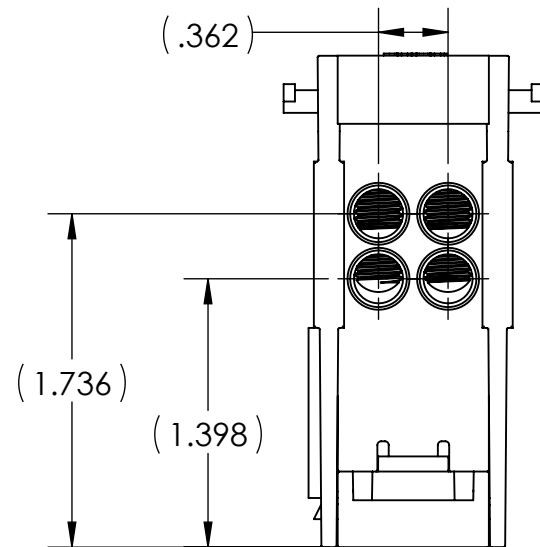


LINE SIDE				LOAD SIDE			
# OF PORTS	WIRE RANGE	HEX SIZE	INSTALL TORQUE (IN•LB)	# OF PORTS	WIRE RANGE	HEX SIZE	INSTALL TORQUE (IN•LB)
1	2/0-14 AWG	3/16	2/0-8 AWG - 120 10-14 AWG - 20	4	4-14 AWG	SLOTTED	4-8 AWG - 35 10-14 AWG - 20

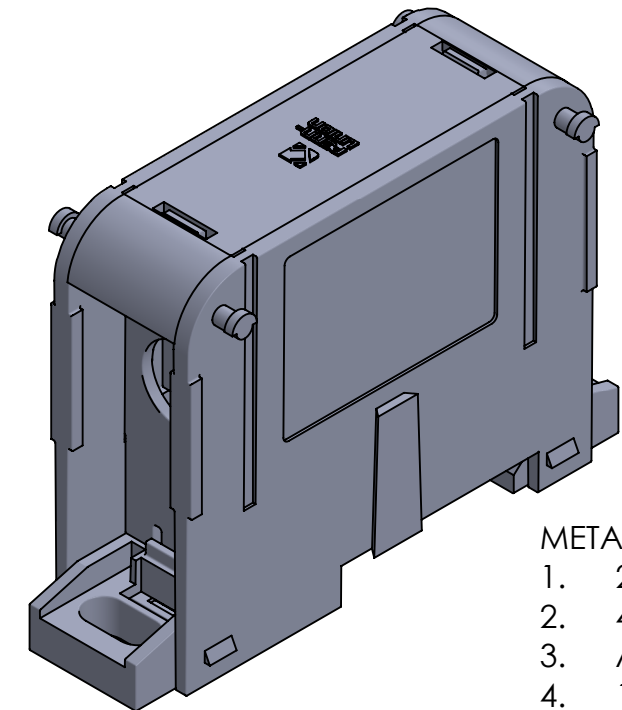
2X 0.252 x 0.512 MOUNTING SLOT



SECTION A-A



VIEW D-D

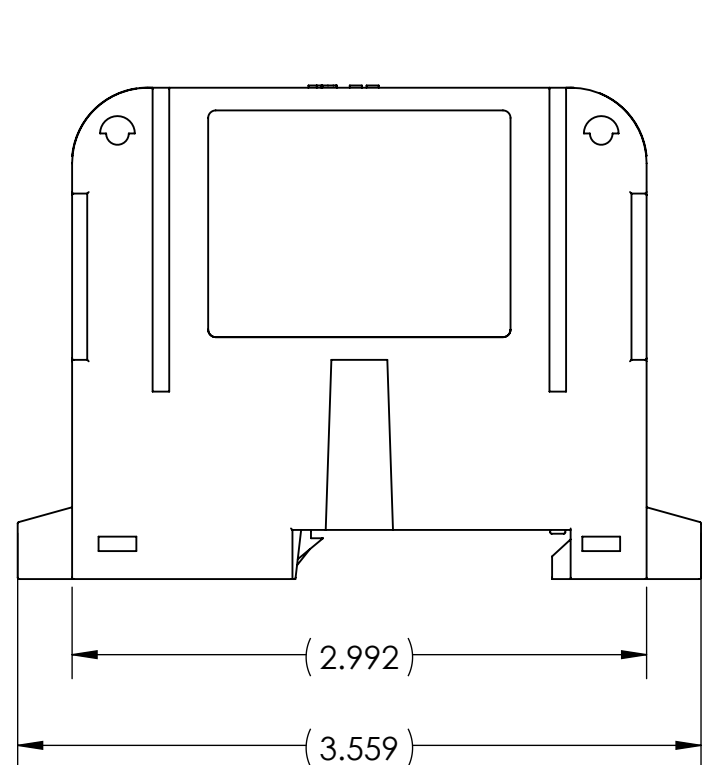
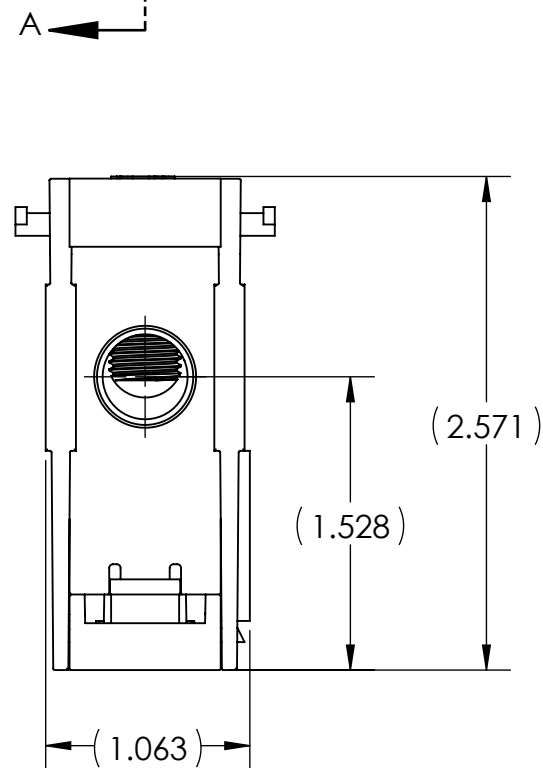


METAL STAMP TO READ:

1. 2/0-14
2. 4-14
3. AL9CU
4. 14-2/0

NOTES:

1. ALL DIMENSIONS IN INCHES UNLESS OTHERWISE SPECIFIED
2. APPROXIMATE ASSEMBLY WEIGHT: .278 LB
3. SNAP LOCK MODULAR DESIGN ALLOWS FOR INDIVIDUAL BLOCKS TO BE EASILY ASSEMBLED
4. CONNECTOR MANUFACTURED FROM HIGH STRENGTH TIN PLATED ALUMINUM
5. INSULATING BASE AND SIDE COVERS ARE MANUFACTURED FROM GLASS REINFORCED NYLON 616
6. BLOCKS COME COMPLETE WITH CLEAR POLYCARBONATE COVERS AND FINGER SAFE COVERS
7. SUITABLE FOR PANEL AND DIN RAIL MOUNTING
8. cULus LISTED PER UL 1953 FOR COPPER AND ALUMINUM CONDUCTORS AT 90°C AND 600 V
9. AMP RATING PER POLE: 175
10. FLAMMABILITY RATING PER UL 94V-0
11. INTRUSION PROTECTION COMPLIANT WITH IEC 60529 AND IP-20
12. UL ASSIGNED SHORT CIRCUIT CURRENT RATING OF 100,000 AMPS WHEN PROPERLY FUSED
13. CONNECTORS ARE MANUFACTURED WITH TWO SIDE WALL LABELS THAT SPECIFY WIRE RANGE, INSTALLATION TORQUE, ELECTRICAL RATINGS, AND FUSE INFORMATION

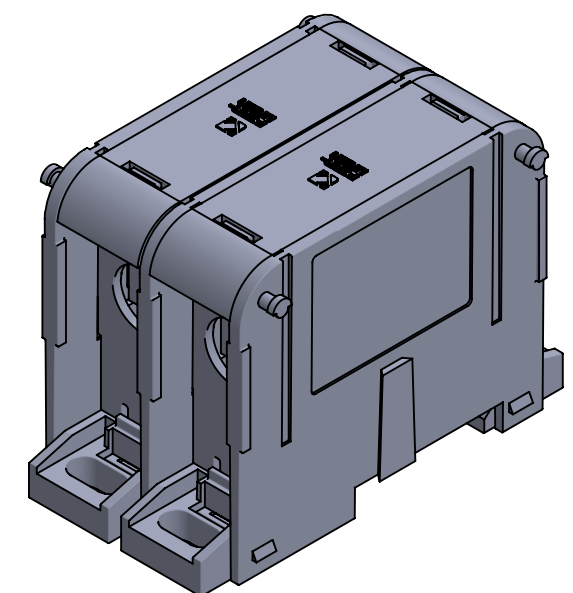
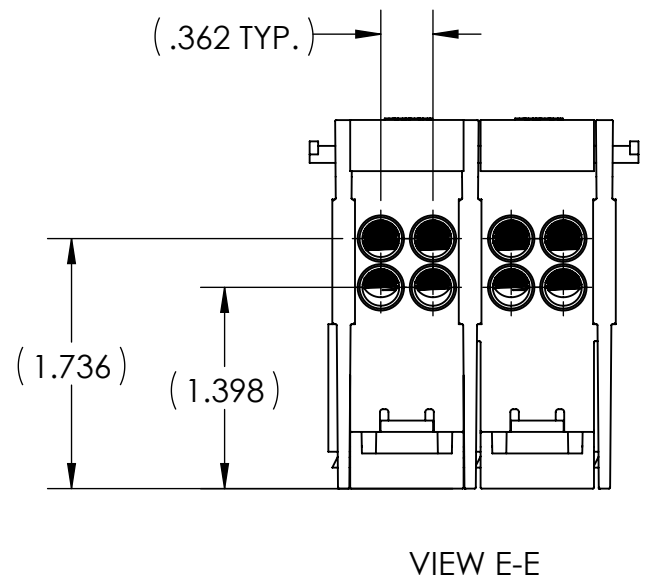
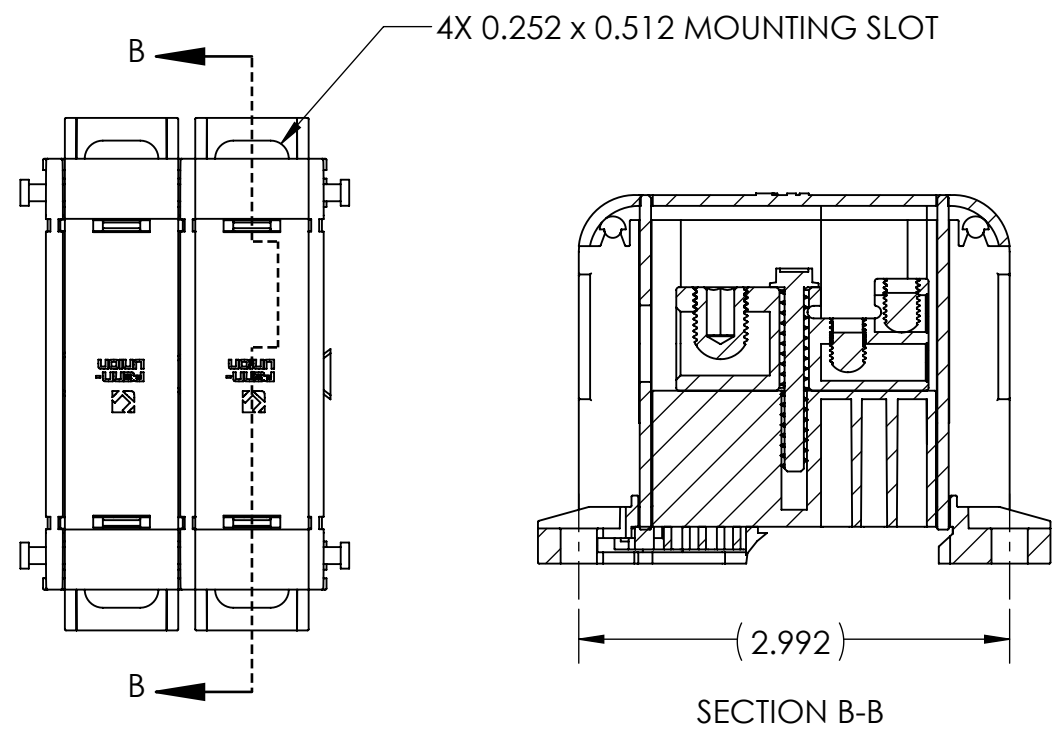


NO.	ECN	DATE
REVISIONS		

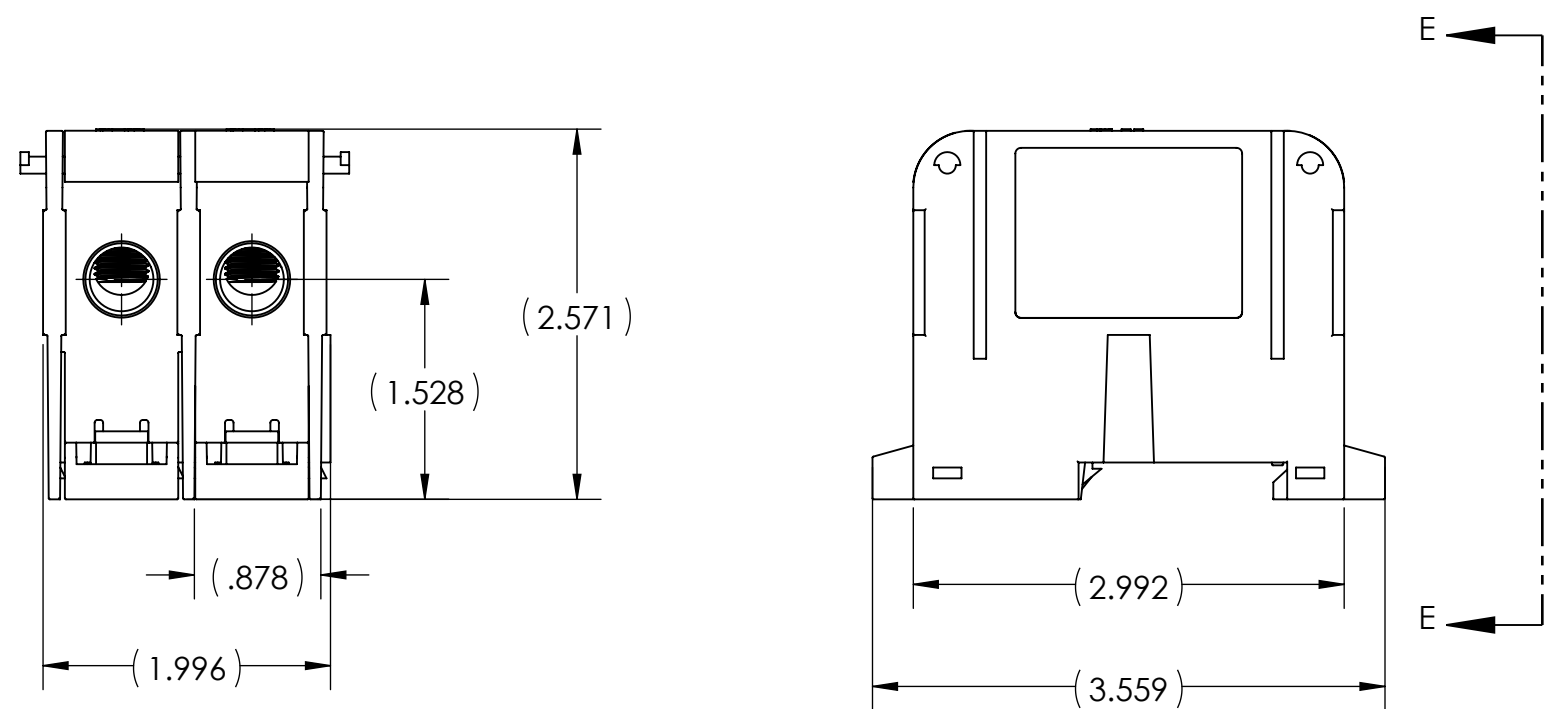
1	ALUMINUM DISTRIBUTION BLOCK	
QTY.	PT.	NAME OR DESCRIPTION
		ALUMINUM DISTRIBUTION BLOCK for 2/0 - 14 AWG TO 4 - 14 AWG
REF. DWG'S: 5J25-96471		H:\5J25\APDB-14-2.0_C
DRAWN BY: CLT		DATE: 7/28/2023
SCALE: 1:1		CHK'D: QJB
SIZE: B		INTERPRET PER ASME Y14.5-2009
DWG. NO. APDB-14-2/0		FILE: 5J25
229 WATERFORD STREET EDINBORO, PA 16412 USA		REV. -
SHEET 1 OF 3		



LINE SIDE				LOAD SIDE			
# OF PORTS	WIRE RANGE	HEX SIZE	INSTALL TORQUE (IN•LB)	# OF PORTS	WIRE RANGE	HEX SIZE	INSTALL TORQUE (IN•LB)
1	2/0-14 AWG	3/16	2/0-8 AWG - 120 10-14 AWG - 20	4	4-14 AWG	SLOTTED	4-8 AWG - 35 10-14 AWG - 20



- METAL STAMP TO READ:
- 2/0-14
 - 4-14
 - AL9CU
 - 14-2/0



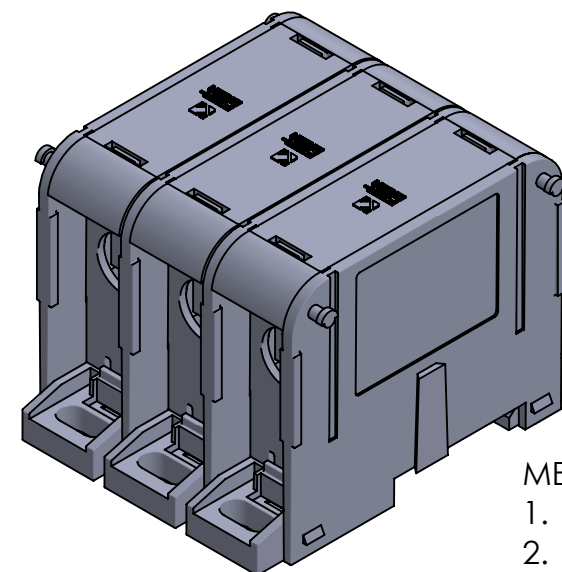
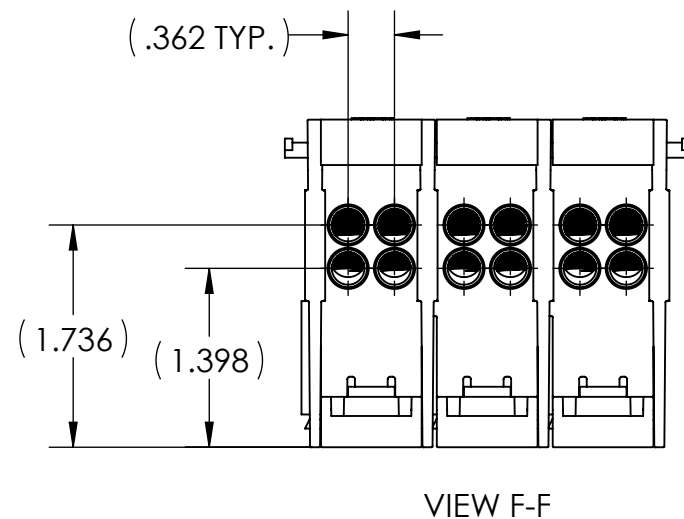
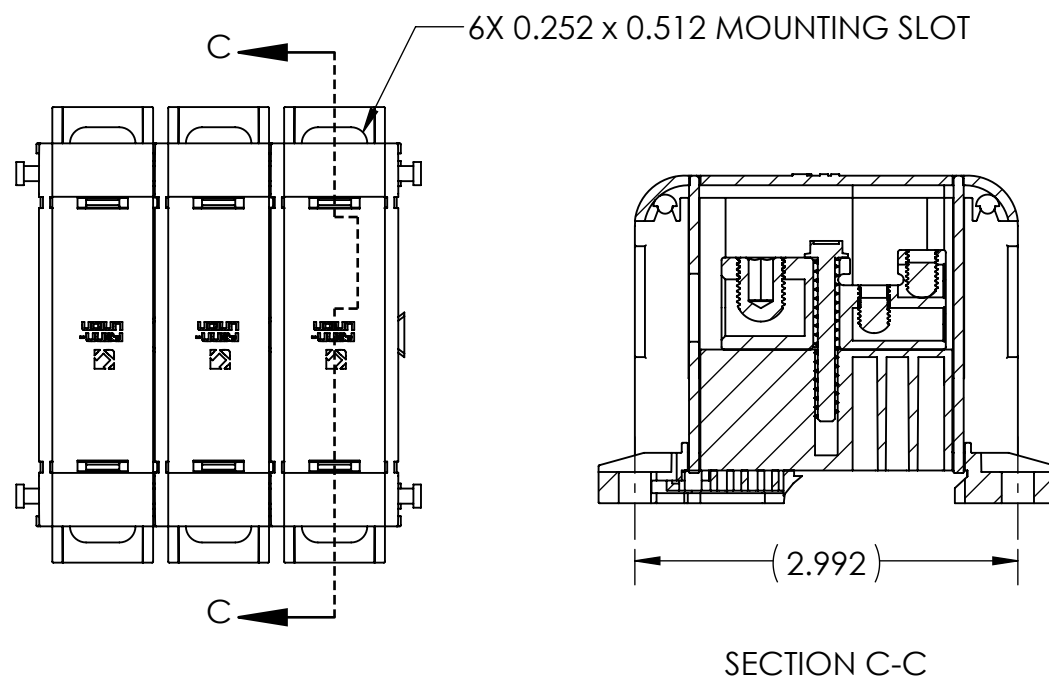
- NOTES:
- ALL DIMENSIONS IN INCHES UNLESS OTHERWISE SPECIFIED
 - APPROXIMATE ASSEMBLY WEIGHT: .419 LB
 - SNAP LOCK MODULAR DESIGN ALLOWS FOR INDIVIDUAL BLOCKS TO BE EASILY ASSEMBLED
 - CONNECTOR MANUFACTURED FROM HIGH STRENGTH TIN PLATED ALUMINUM
 - INSULATING BASE AND SIDE COVERS ARE MANUFACTURED FROM GLASS REINFORCED NYLON 616
 - BLOCKS COME COMPLETE WITH CLEAR POLYCARBONATE COVERS AND FINGER SAFE COVERS
 - SUITABLE FOR PANEL AND DIN RAIL MOUNTING
 - cULus LISTED PER UL 1953 FOR COPPER AND ALUMINUM CONDUCTORS AT 90°C AND 600 V
 - AMP RATING PER POLE: 175
 - FLAMMABILITY RATING PER UL 94V-0
 - INTRUSION PROTECTION COMPLIANT WITH IEC 60529 AND IP-20
 - UL ASSIGNED SHORT CIRCUIT CURRENT RATING OF 100,000 AMPS WHEN PROPERLY FUSED
 - CONNECTORS ARE MANUFACTURED WITH TWO SIDE WALL LABELS THAT SPECIFY WIRE RANGE, INSTALLATION TORQUE, ELECTRICAL RATINGS, AND FUSE INFORMATION

1	ALUMINUM DISTRIBUTION BLOCK	
QTY.	PT.	NAME OR DESCRIPTION
		ALUMINUM DISTRIBUTION BLOCK for 2/0 - 14 AWG TO 4 - 14 AWG
REF. DWG'S: 5J25-96471		H:\5J25\APDB-14-2.0_C
DRAWN BY: CLT		DATE: 7/28/2023
SCALE: 3:4		CHK'D: QJB
INTERPRET PER ASME Y14.5-2009		FILE: 5J25
SIZE: B		DWG. NO. APDB-14-2/0
REV. -		SHEET 2 OF 3

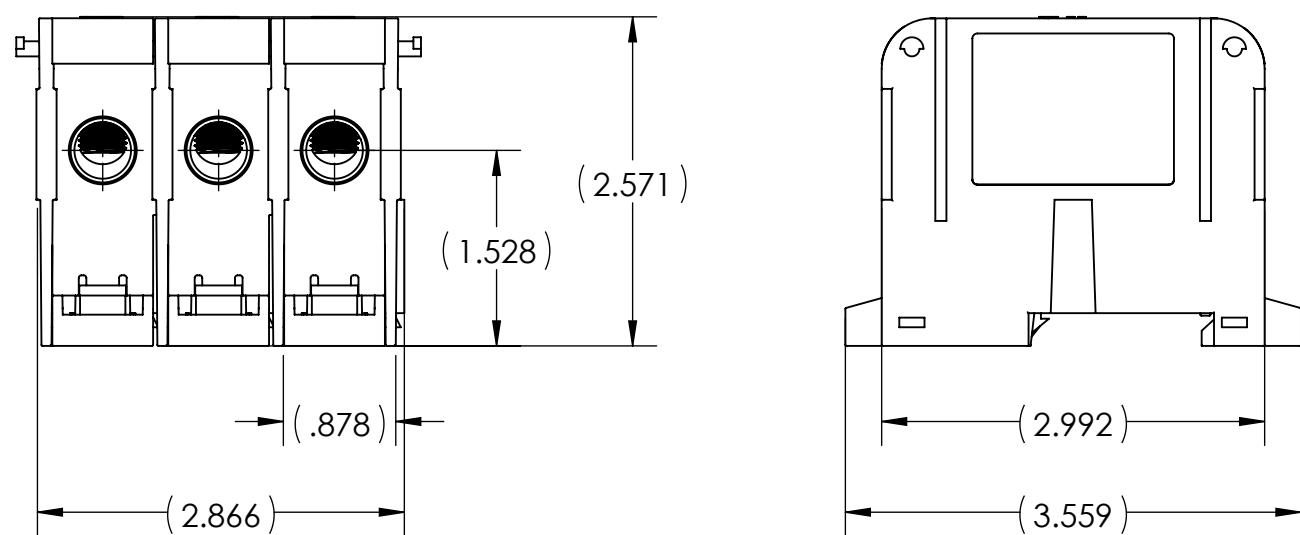
NO.	ECN	DATE
REVISIONS		



LINE SIDE				LOAD SIDE			
# OF PORTS	WIRE RANGE	HEX SIZE	INSTALL TORQUE (IN•LB)	# OF PORTS	WIRE RANGE	HEX SIZE	INSTALL TORQUE (IN•LB)
1	2/0-14 AWG	3/16	2/0-8 AWG - 120 10-14 AWG - 20	4	4-14 AWG	SLOTTED	4-8 AWG - 35 10-14 AWG - 20



- METAL STAMP TO READ:
- 2/0-14
 - 4-14
 - AL9CU
 - 14-2/0



NOTES:

- ALL DIMENSIONS IN INCHES UNLESS OTHERWISE SPECIFIED
- APPROXIMATE ASSEMBLY WEIGHT: .610 LB
- SNAP LOCK MODULAR DESIGN ALLOWS FOR INDIVIDUAL BLOCKS TO BE EASILY ASSEMBLED
- CONNECTOR MANUFACTURED FROM HIGH STRENGTH TIN PLATED ALUMINUM
- INSULATING BASE AND SIDE COVERS ARE MANUFACTURED FROM GLASS REINFORCED NYLON 616
- BLOCKS COME COMPLETE WITH CLEAR POLYCARBONATE COVERS AND FINGER SAFE COVERS
- SUITABLE FOR PANEL AND DIN RAIL MOUNTING
- cULus LISTED PER UL 1953 FOR COPPER AND ALUMINUM CONDUCTORS AT 90°C AND 600 V
- AMP RATING PER POLE: 175
- FLAMMABILITY RATING PER UL 94V-0
- INTRUSION PROTECTION COMPLIANT WITH IEC 60529 AND IP-20
- UL ASSIGNED SHORT CIRCUIT CURRENT RATING OF 100,000 AMPS WHEN PROPERLY FUSED
- CONNECTORS ARE MANUFACTURED WITH TWO SIDE WALL LABELS THAT SPECIFY WIRE RANGE, INSTALLATION TORQUE, ELECTRICAL RATINGS, AND FUSE INFORMATION

1	ALUMINUM DISTRIBUTION BLOCK	
QTY.	PT.	NAME OR DESCRIPTION
		ALUMINUM DISTRIBUTION BLOCK for 2/0 - 14 AWG TO 4 - 14 AWG
REF. DWG'S: 5J25-96471		H:\5J25\APDB-14-2.0_C
DRAWN BY: CLT		DATE: 7/28/2023
SCALE: 2:3		INTERPRET PER ASME Y14.5-2009
SIZE: B		FILE: 5J25
DWG. NO. APDB-14-2/0		REV. -
229 WATERFORD STREET EDINBORO, PA 16412 USA		

NO.	ECN	DATE
REVISIONS		