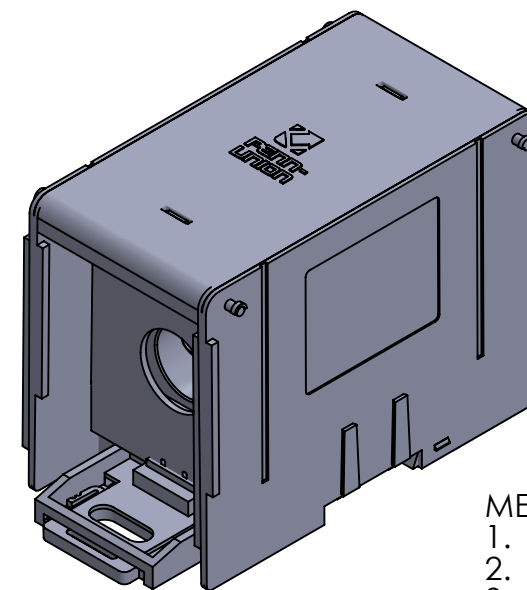
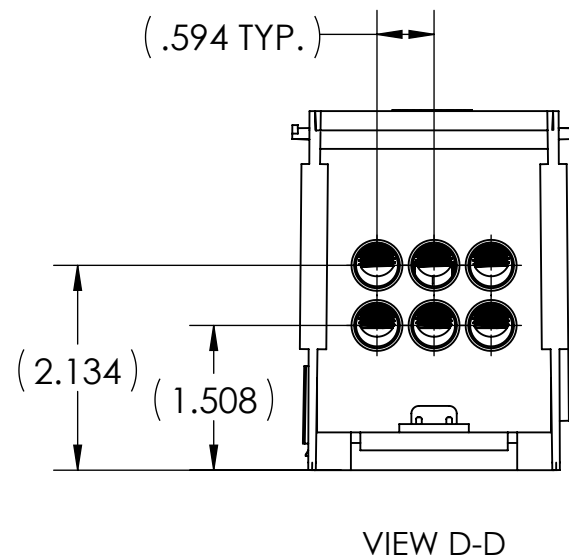
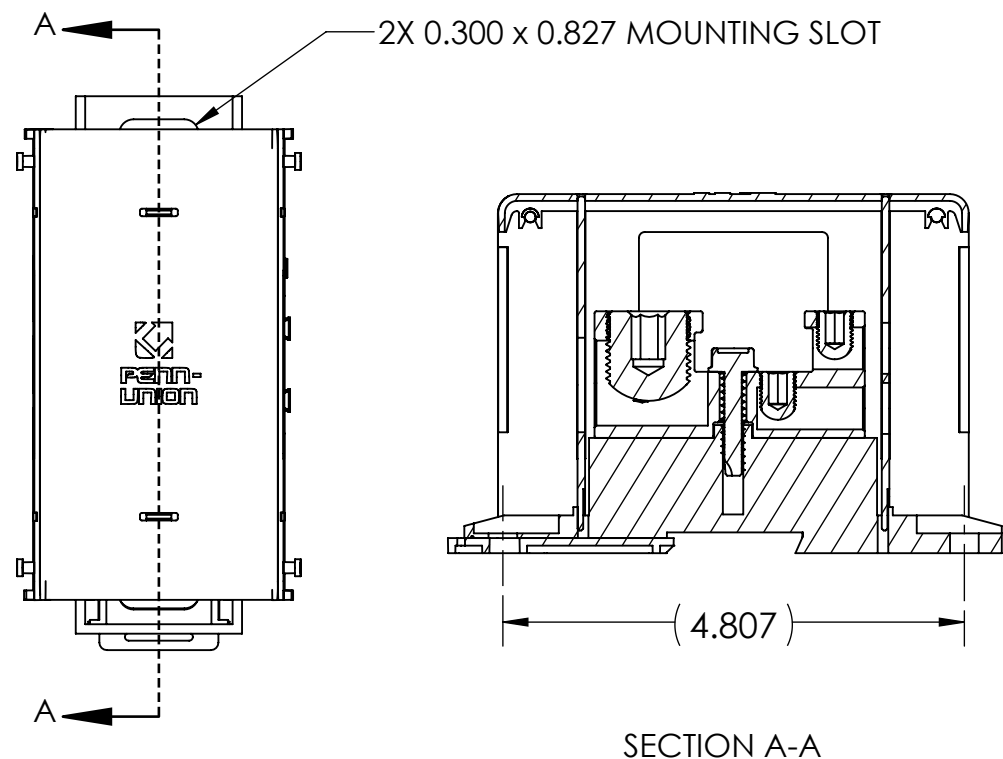
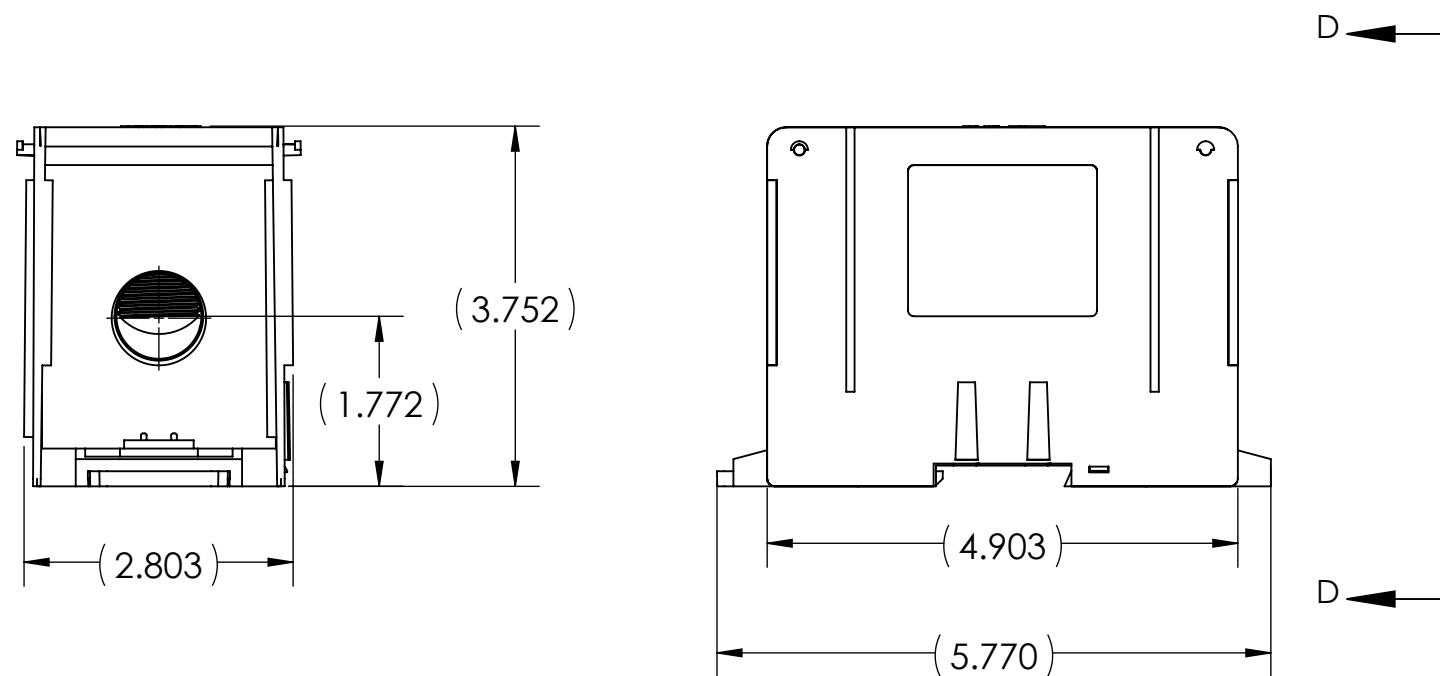




LINE SIDE				LOAD SIDE			
# OF PORTS	WIRE RANGE	HEX SIZE	INSTALL TORQUE (IN•LB)	# OF PORTS	WIRE RANGE	HEX SIZE	INSTALL TORQUE (IN•LB)
1	500 MCM-4 AWG	5/16	443	6	2/0-14 AWG	3/16	2/0-8 AWG - 120 10-14 AWG - 20



METAL STAMP TO READ:
 1. 500-4
 2. 2/0-14
 3. AL9CU
 4. 16-500



NOTES:

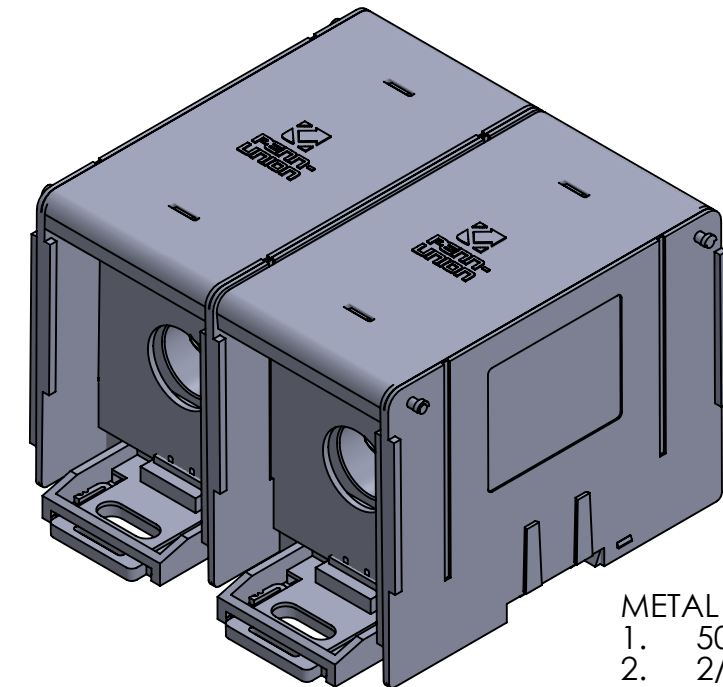
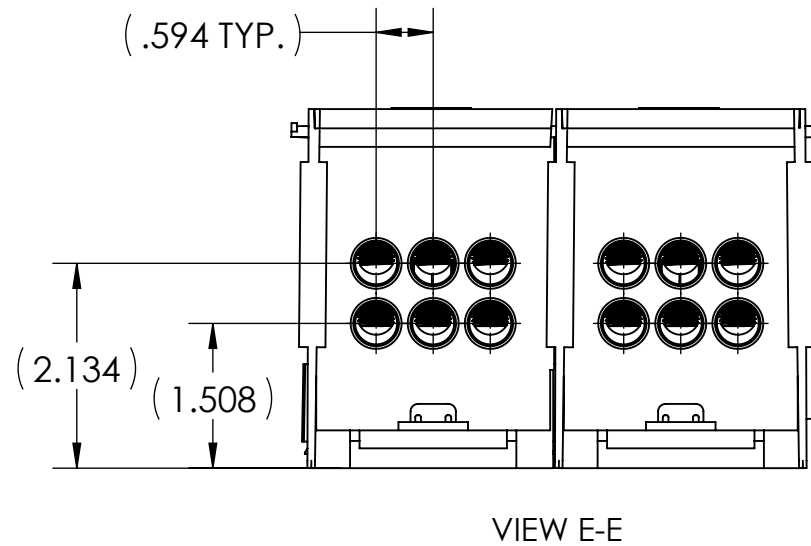
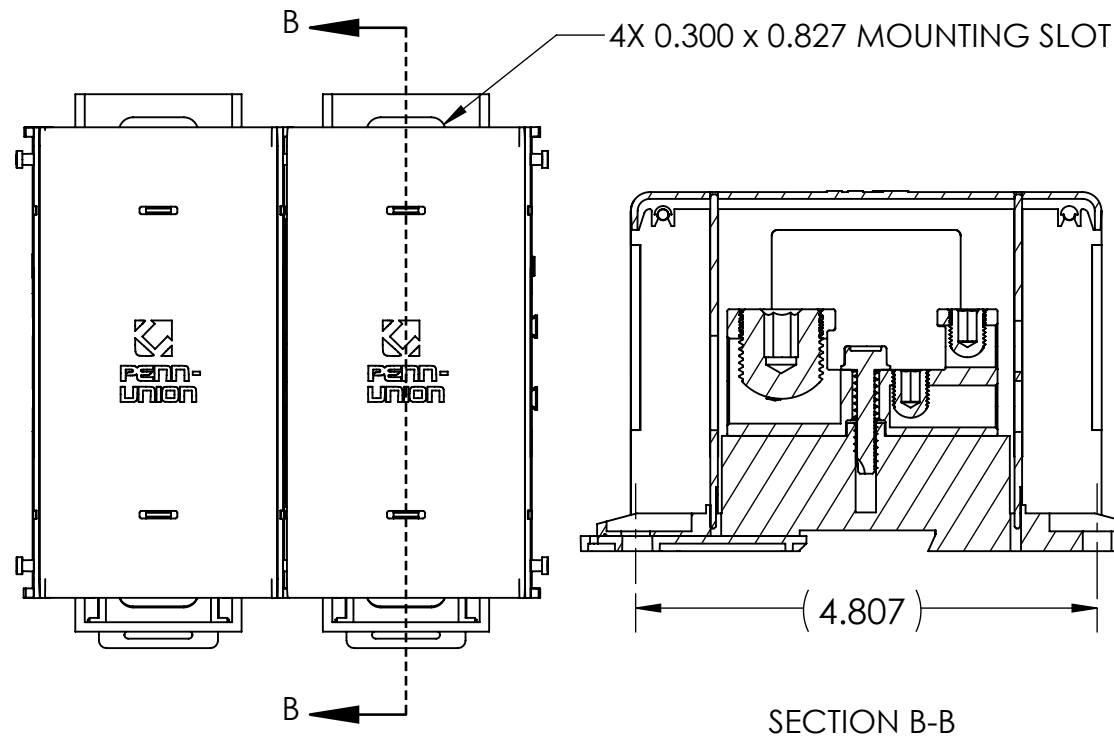
- ALL DIMENSIONS IN INCHES UNLESS OTHERWISE SPECIFIED
- APPROXIMATE ASSEMBLY WEIGHT: 1.091 LB
- SNAP LOCK MODULAR DESIGN ALLOWS FOR INDIVIDUAL BLOCKS TO BE EASILY ASSEMBLED
- CONNECTOR MANUFACTURED FROM HIGH STRENGTH TIN PLATED ALUMINUM
- INSULATING BASE AND SIDE COVERS ARE MANUFACTURED FROM GLASS REINFORCED NYLON 616
- BLOCKS COME COMPLETE WITH CLEAR POLYCARBONATE COVERS AND FINGER SAFE COVERS
- cULus LISTED PER UL 1953 FOR COPPER AND ALUMINUM CONDUCTORS AT 90°C AND 600 V
- AMP RATING PER POLE: 380
- FLAMMABILITY RATING PER UL 94V-0
- INTRUSION PROTECTION COMPLIANT WITH IEC 60529 AND IP-20
- UL ASSIGNED SHORT CIRCUIT CURRENT RATING OF 100,000 AMPS WHEN PROPERLY FUSED
- CONNECTORS ARE MANUFACTURED WITH TWO SIDE WALL LABELS THAT SPECIFY WIRE RANGE, INSTALLATION TORQUE, ELECTRICAL RATINGS, AND FUSE INFORMATION

1	ALUMINUM DISTRIBUTION BLOCK	
QTY.	PT.	NAME OR DESCRIPTION
		ALUMINUM DISTRIBUTION BLOCK for 500 MCM - 4 AWG TO 2/0 - 14 AWG
REF. DWG'S: 5J25-96457		H:\5J25\APDB-16-500
DRAWN BY: CLT		DATE: 7/28/2023
SCALE: 1:2		INTERPRET PER ASME Y14.5-2009
SIZE: B		FILE: 5J25
DWG. NO. APDB-16-500		REV. -
CAT. NO. APDB-16-500-1		
 229 WATERFORD STREET EDINBORO, PA 16412 USA		

NO.	ECN	DATE
REVISIONS		



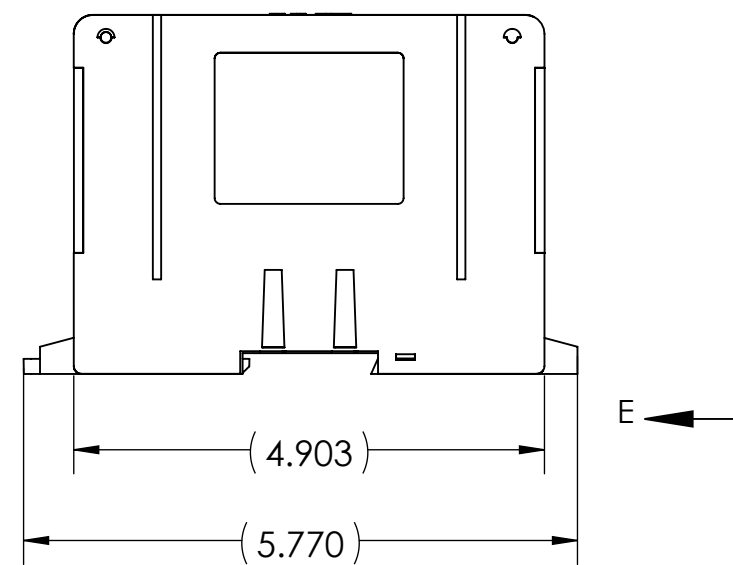
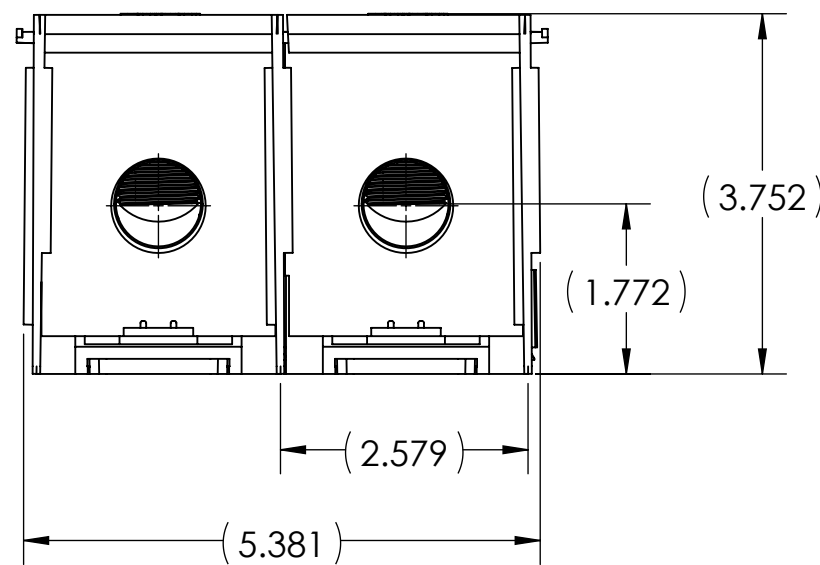
LINE SIDE				LOAD SIDE			
# OF PORTS	WIRE RANGE	HEX SIZE	INSTALL TORQUE (IN•LB)	# OF PORTS	WIRE RANGE	HEX SIZE	INSTALL TORQUE (IN•LB)
1	500 MCM-4 AWG	5/16	443	6	2/0-14 AWG	3/16	2/0-8 AWG - 120 10-14 AWG - 20



- METAL STAMP TO READ:
- 500-4
 - 2/0-14
 - AL9CU
 - 16-500

NOTES:

- ALL DIMENSIONS IN INCHES UNLESS OTHERWISE SPECIFIED
- APPROXIMATE ASSEMBLY WEIGHT: 1.841 LB
- SNAP LOCK MODULAR DESIGN ALLOWS FOR INDIVIDUAL BLOCKS TO BE EASILY ASSEMBLED
- CONNECTOR MANUFACTURED FROM HIGH STRENGTH TIN PLATED ALUMINUM
- INSULATING BASE AND SIDE COVERS ARE MANUFACTURED FROM GLASS REINFORCED NYLON 616
- BLOCKS COME COMPLETE WITH CLEAR POLYCARBONATE COVERS AND FINGER SAFE COVERS
- cULus LISTED PER UL 1953 FOR COPPER AND ALUMINUM CONDUCTORS AT 90°C AND 600 V
- AMP RATING PER POLE: 380
- FLAMMABILITY RATING PER UL 94V-0
- INTRUSION PROTECTION COMPLIANT WITH IEC 60529 AND IP-20
- UL ASSIGNED SHORT CIRCUIT CURRENT RATING OF 100,000 AMPS WHEN PROPERLY FUSED
- CONNECTORS ARE MANUFACTURED WITH TWO SIDE WALL LABELS THAT SPECIFY WIRE RANGE, INSTALLATION TORQUE, ELECTRICAL RATINGS, AND FUSE INFORMATION

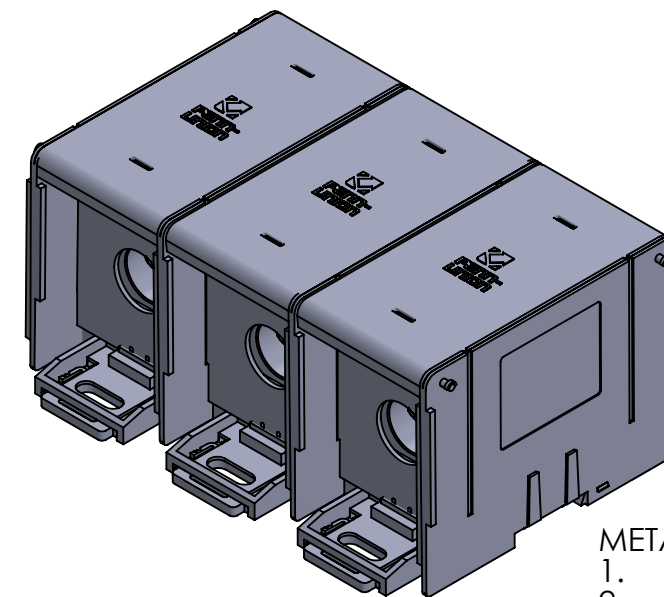
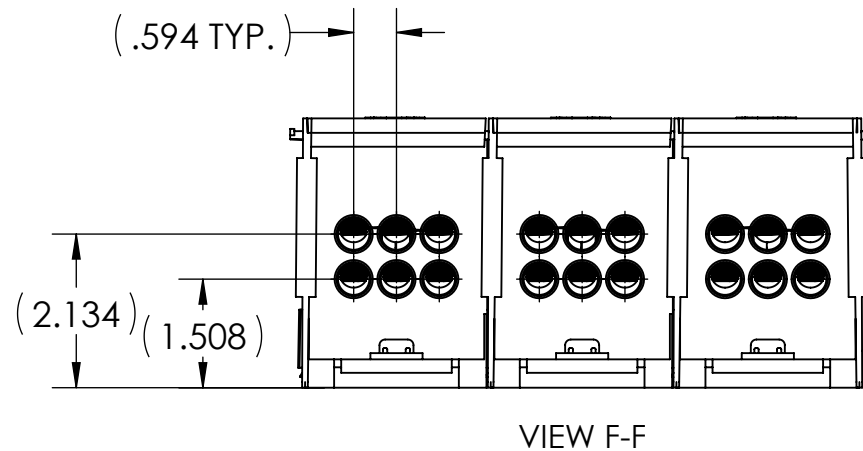
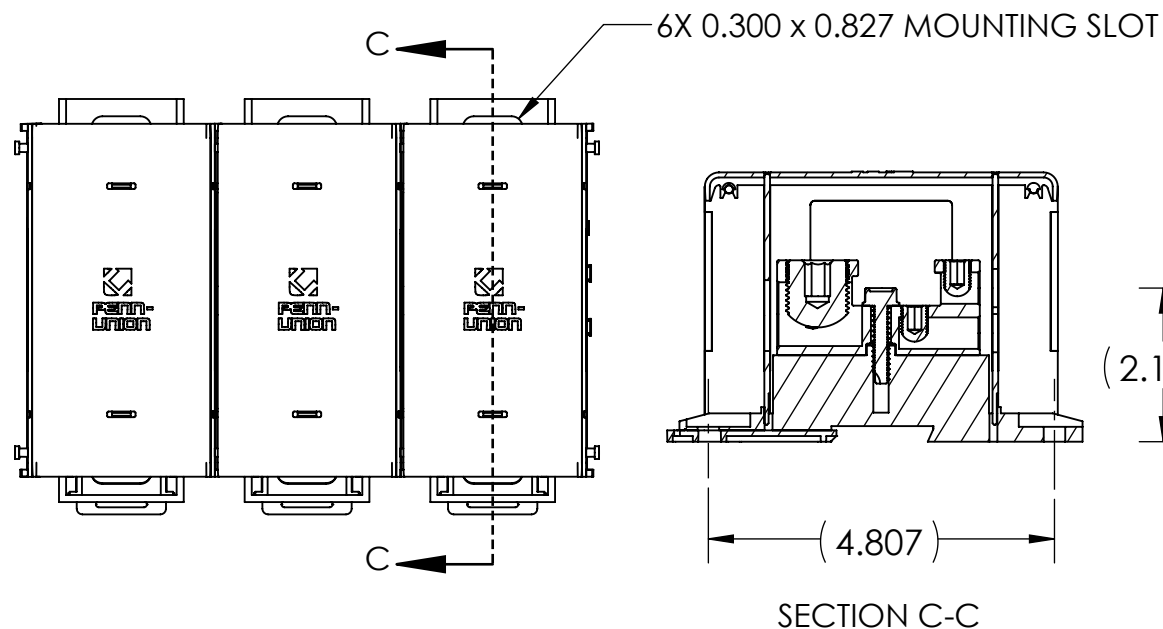


NO.	ECN	DATE
REVISIONS		

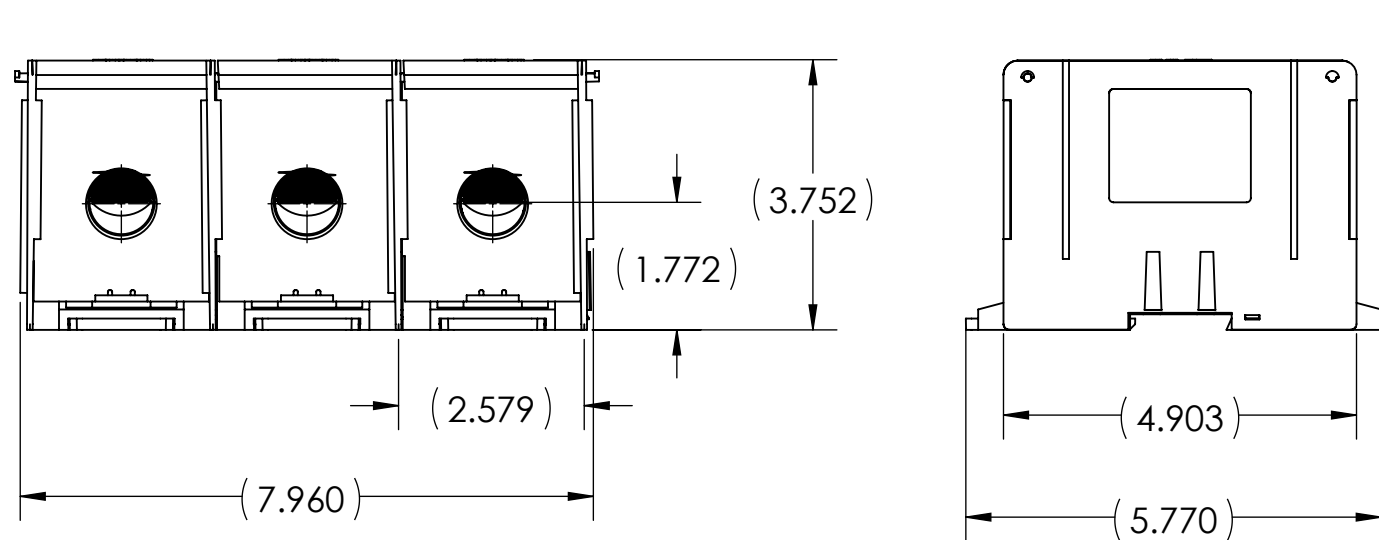
1	ALUMINUM DISTRIBUTION BLOCK	
QTY.	PT.	NAME OR DESCRIPTION
		ALUMINUM DISTRIBUTION BLOCK for 500 MCM - 4 AWG TO 2/0 - 14 AWG
REF. DWG'S: 5J25-96457		H:\5J25\APDB-16-500
DRAWN BY: CLT		DATE: 7/28/2023
SCALE: 1:2		CHK'D: QJB
SIZE: B		INTERPRET PER ASME Y14.5-2009
DWG. NO. APDB-16-500		FILE: 5J25
CAT. NO. APDB-16-500-2		REV. -
 229 WATERFORD STREET EDINBORO, PA 16412 USA		



LINE SIDE				LOAD SIDE			
# OF PORTS	WIRE RANGE	HEX SIZE	INSTALL TORQUE (IN•LB)	# OF PORTS	WIRE RANGE	HEX SIZE	INSTALL TORQUE (IN•LB)
1	500 MCM-4 AWG	5/16	443	6	2/0-14 AWG	3/16	2/0-8 AWG - 120 10-14 AWG - 20



METAL STAMP TO READ:
 1. 500-4
 2. 2/0-14
 3. AL9CU
 4. 16-500



NOTES:

- ALL DIMENSIONS IN INCHES UNLESS OTHERWISE SPECIFIED
- APPROXIMATE ASSEMBLY WEIGHT: 2.714 LB
- SNAP LOCK MODULAR DESIGN ALLOWS FOR INDIVIDUAL BLOCKS TO BE EASILY ASSEMBLED
- CONNECTOR MANUFACTURED FROM HIGH STRENGTH TIN PLATED ALUMINUM
- INSULATING BASE AND SIDE COVERS ARE MANUFACTURED FROM GLASS REINFORCED NYLON 616
- BLOCKS COME COMPLETE WITH CLEAR POLYCARBONATE COVERS AND FINGER SAFE COVERS
- cULus LISTED PER UL 1953 FOR COPPER AND ALUMINUM CONDUCTORS AT 90°C AND 600 V
- AMP RATING PER POLE: 380
- FLAMMABILITY RATING PER UL 94V-0
- INTRUSION PROTECTION COMPLIANT WITH IEC 60529 AND IP-20
- UL ASSIGNED SHORT CIRCUIT CURRENT RATING OF 100,000 AMPS WHEN PROPERLY FUSED
- CONNECTORS ARE MANUFACTURED WITH TWO SIDE WALL LABELS THAT SPECIFY WIRE RANGE, INSTALLATION TORQUE, ELECTRICAL RATINGS, AND FUSE INFORMATION

1	ALUMINUM DISTRIBUTION BLOCK	
QTY.	PT.	NAME OR DESCRIPTION
		ALUMINUM DISTRIBUTION BLOCK for 500 MCM - 4 AWG TO 2/0 - 14 AWG
REF. DWG'S: 5J25-96457		H:\5J25\APDB-16-500
DRAWN BY: CLT		DATE: 7/28/2023
SCALE: 3:8		CHK'D: QJB
SIZE: B		INTERPRET PER ASME Y14.5-2009
DWG. NO. APDB-16-500		FILE: 5J25
229 WATERFORD STREET EDINBORO, PA 16412 USA		REV. -

NO.	ECN	DATE
REVISIONS		