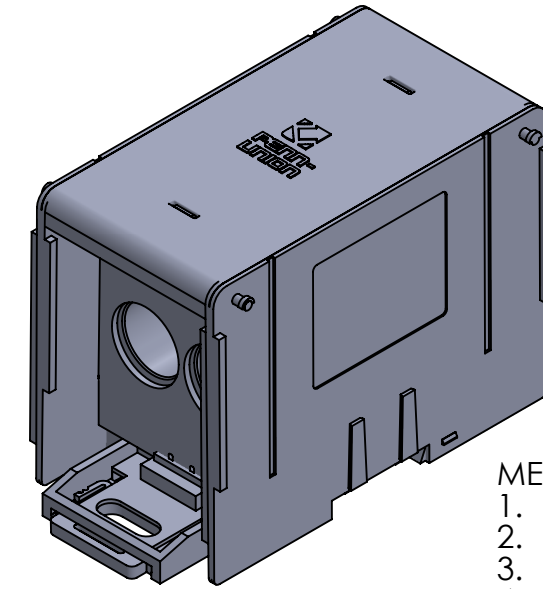
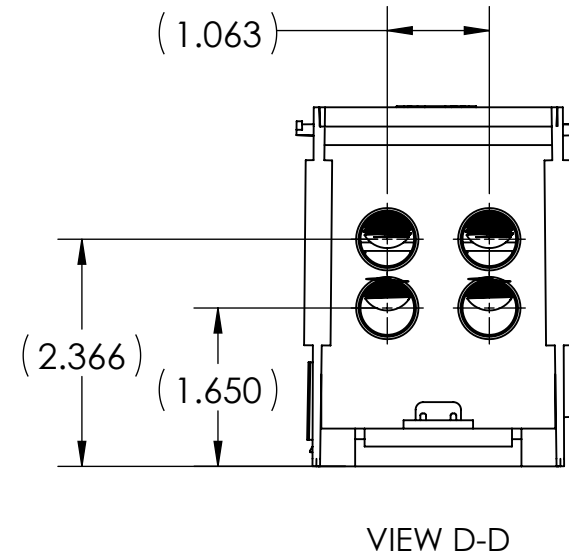
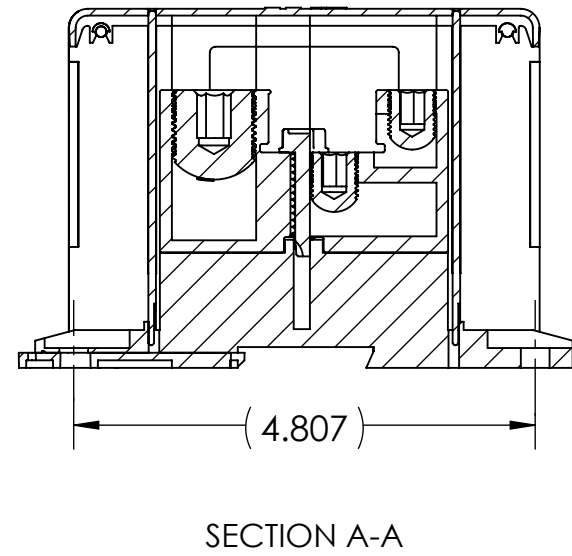
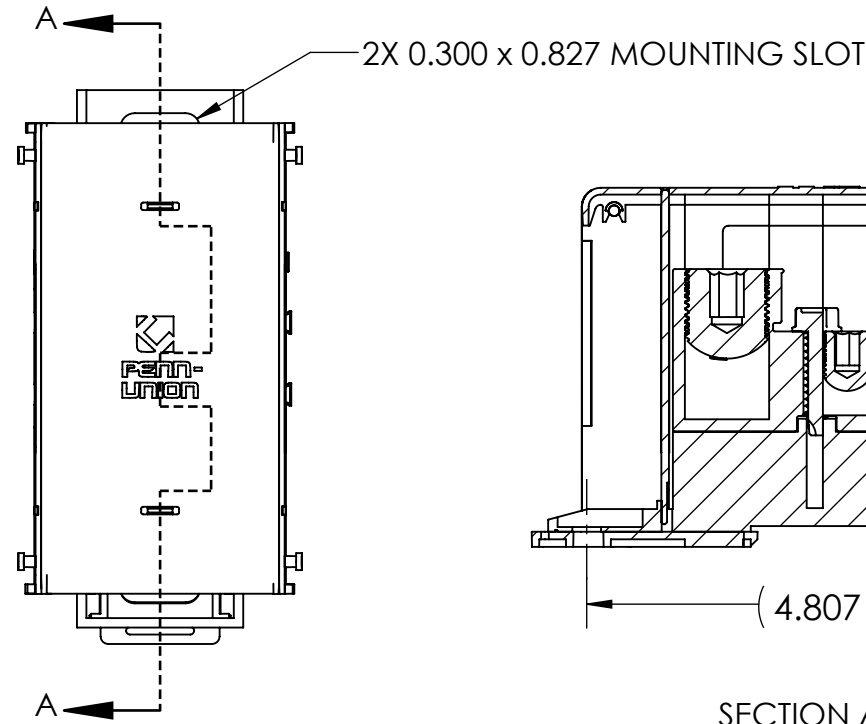




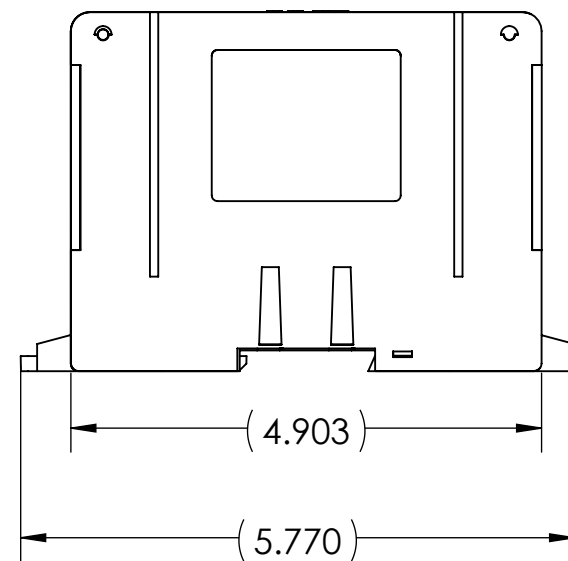
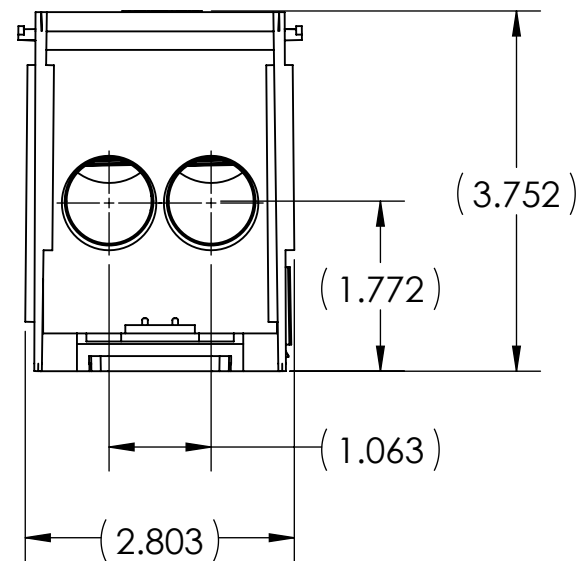
LINE SIDE				LOAD SIDE			
# OF PORTS	WIRE RANGE	HEX SIZE	INSTALL TORQUE (IN•LB)	# OF PORTS	WIRE RANGE	HEX SIZE	INSTALL TORQUE (IN•LB)
2	500 MCM-4 AWG	5/16	443	4	4/0-6 AWG	1/4	4/0-1/0 AWG - 225 1-6 AWG - 120



- METAL STAMP TO READ:
- 500-4
 - 4/0-6
 - AL9CU
 - 24-500

NOTES:

- ALL DIMENSIONS IN INCHES UNLESS OTHERWISE SPECIFIED
- APPROXIMATE ASSEMBLY WEIGHT: 1.488 LB
- SNAP LOCK MODULAR DESIGN ALLOWS FOR INDIVIDUAL BLOCKS TO BE EASILY ASSEMBLED
- CONNECTOR MANUFACTURED FROM HIGH STRENGTH TIN PLATED ALUMINUM
- INSULATING BASE AND SIDE COVERS ARE MANUFACTURED FROM GLASS REINFORCED NYLON 616
- BLOCKS COME COMPLETE WITH CLEAR POLYCARBONATE COVERS AND FINGER SAFE COVERS
- cULus LISTED PER UL 1953 FOR COPPER AND ALUMINUM CONDUCTORS AT 90°C AND 600 V
- AMP RATING PER POLE: 760
- FLAMMABILITY RATING PER UL 94V-0
- INTRUSION PROTECTION COMPLIANT WITH IEC 60529 AND IP-20
- UL ASSIGNED SHORT CIRCUIT CURRENT RATING OF 100,000 AMPS WHEN PROPERLY FUSED
- CONNECTORS ARE MANUFACTURED WITH TWO SIDE WALL LABELS THAT SPECIFY WIRE RANGE, INSTALLATION TORQUE, ELECTRICAL RATINGS, AND FUSE INFORMATION

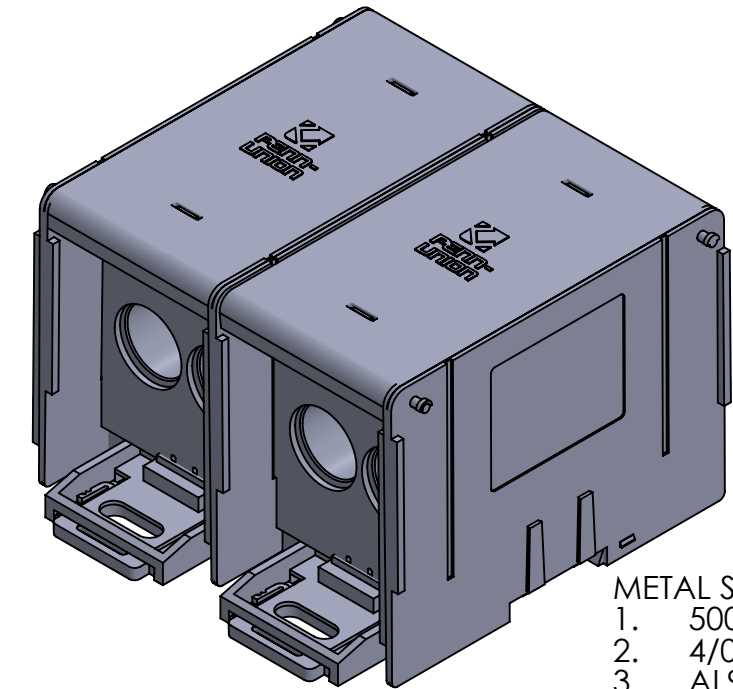
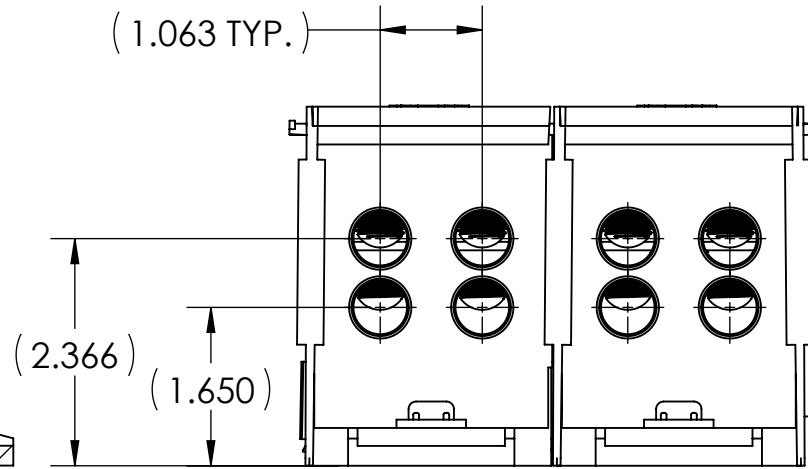
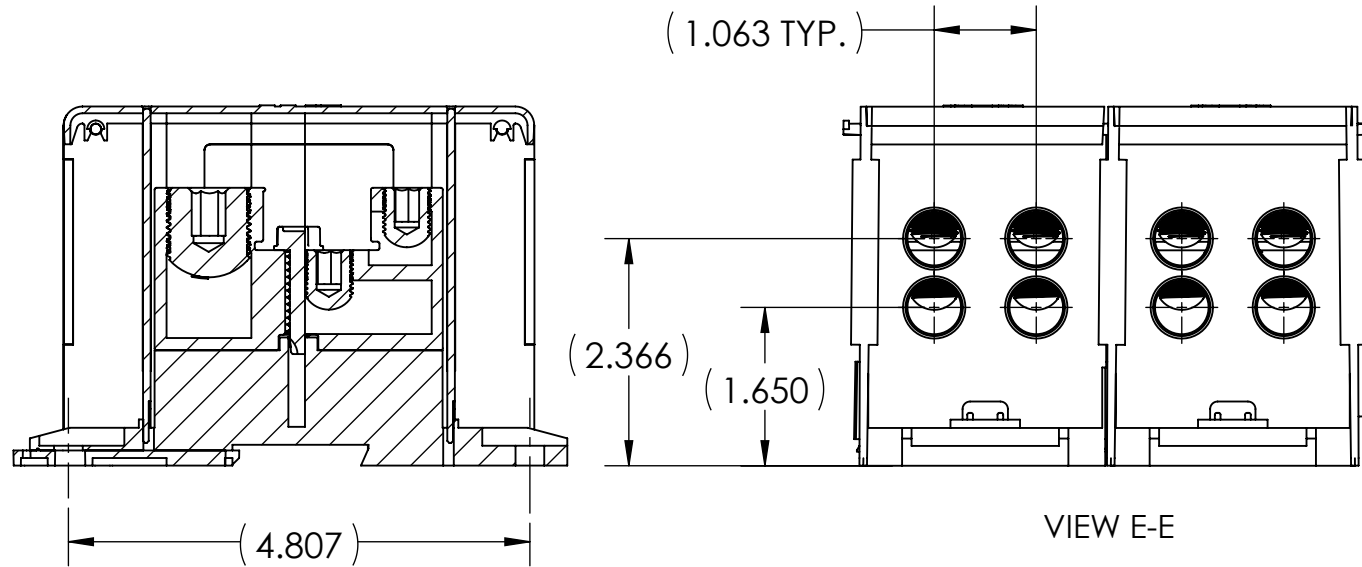
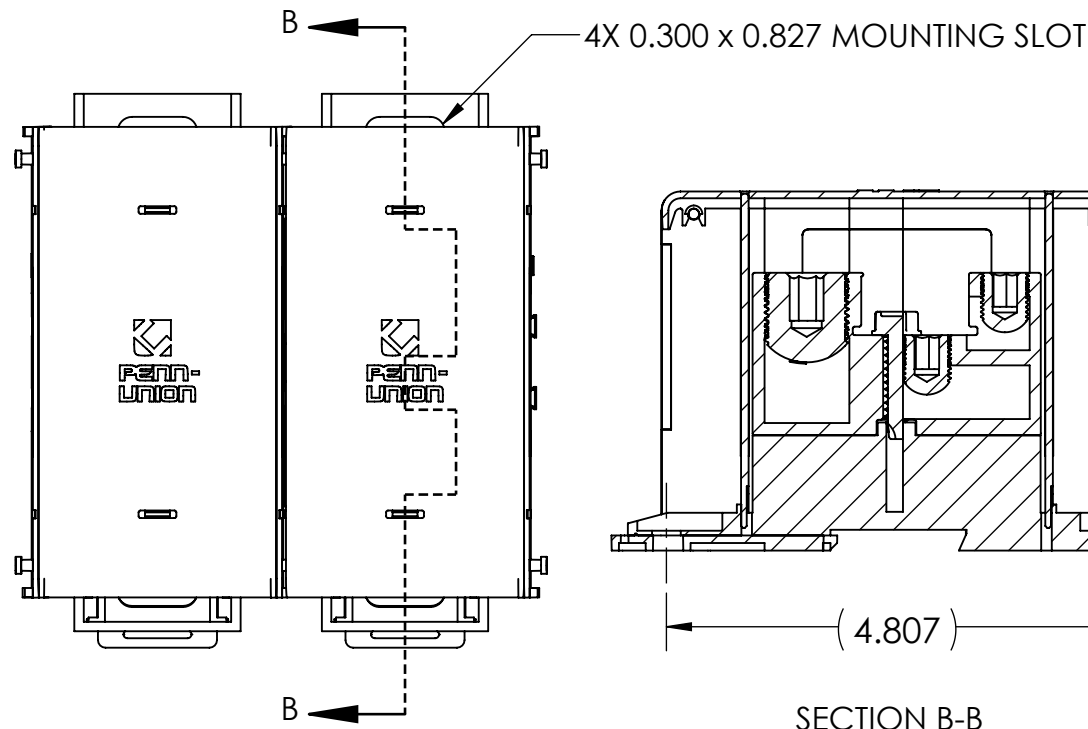


QTY.	1	PT.	ALUMINUM DISTRIBUTION BLOCK
NAME OR DESCRIPTION			
ALUMINUM DISTRIBUTION BLOCK			
for			
500 MCM - 4 AWG TO 4/0 - 6 AWG			
REF. DWG'S: 5J25-96453		H:\5J25\APDB-24-500	
DRAWN BY: CLT		DATE: 7/31/2023	CHK'D: QJB
SCALE: 1:2		INTERPRET PER ASME Y14.5-2009	
SIZE: B		FILE: 5J25	
DWG. NO. APDB-24-500		REV. -	
CAT. NO. APDB-24-500-1		SHEET 1 OF 3	

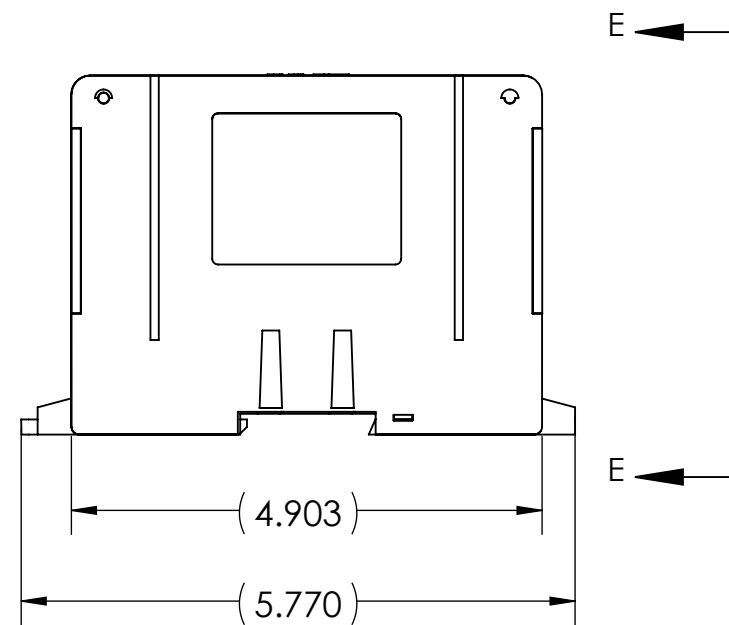
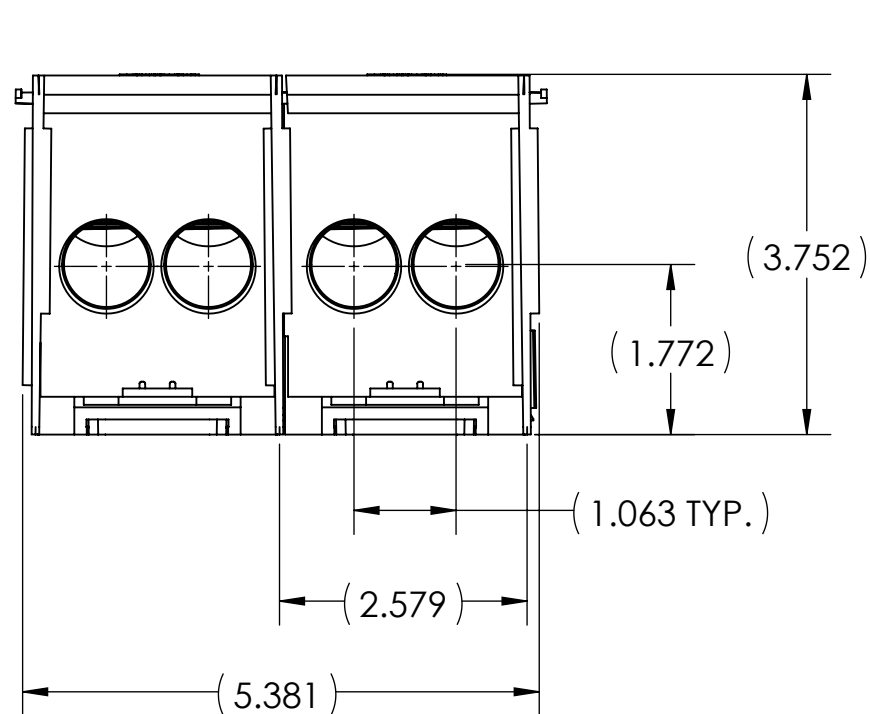
NO.	ECN	DATE
REVISIONS		



LINE SIDE				LOAD SIDE			
# OF PORTS	WIRE RANGE	HEX SIZE	INSTALL TORQUE (IN•LB)	# OF PORTS	WIRE RANGE	HEX SIZE	INSTALL TORQUE (IN•LB)
2	500 MCM-4 AWG	5/16	443	4	4/0-6 AWG	1/4	4/0-1/0 AWG - 225 1-6 AWG - 120



METAL STAMP TO READ:
 1. 500-4
 2. 4/0-6
 3. AL9CU
 4. 24-500



NOTES:

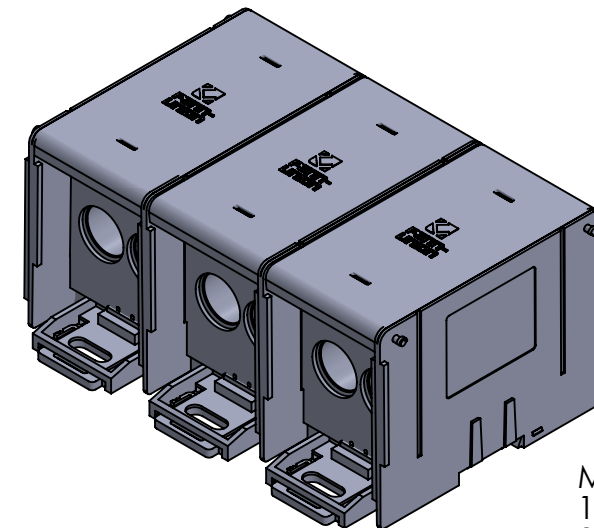
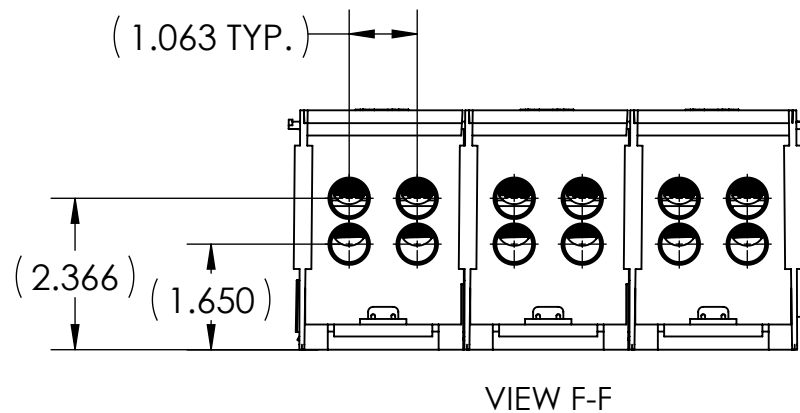
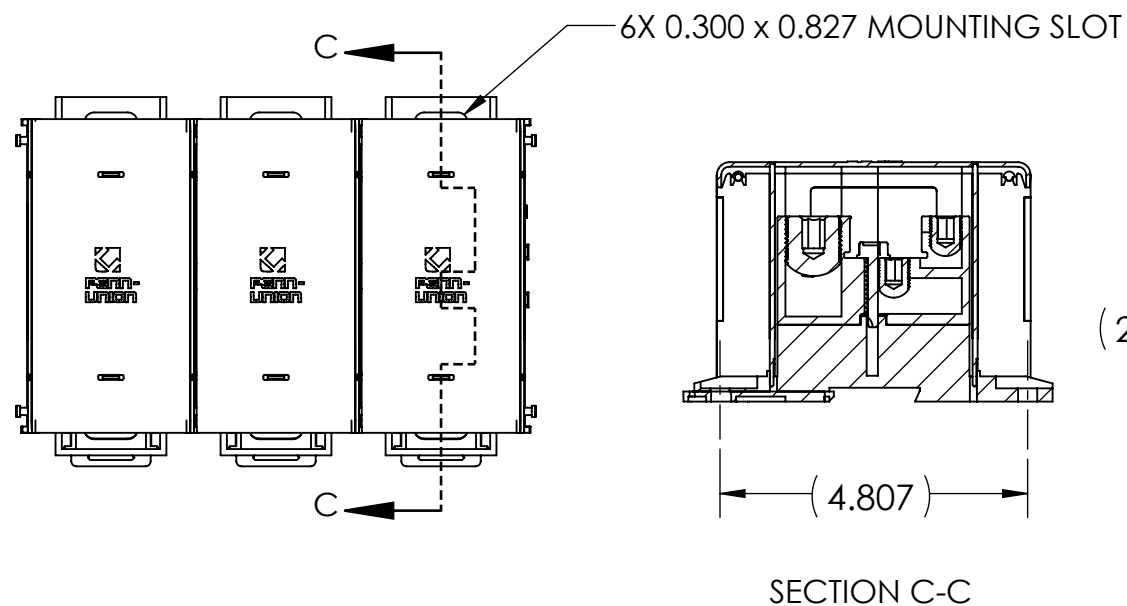
- ALL DIMENSIONS IN INCHES UNLESS OTHERWISE SPECIFIED
- APPROXIMATE ASSEMBLY WEIGHT: 2.370 LB
- SNAP LOCK MODULAR DESIGN ALLOWS FOR INDIVIDUAL BLOCKS TO BE EASILY ASSEMBLED
- CONNECTOR MANUFACTURED FROM HIGH STRENGTH TIN PLATED ALUMINUM
- INSULATING BASE AND SIDE COVERS ARE MANUFACTURED FROM GLASS REINFORCED NYLON 616
- BLOCKS COME COMPLETE WITH CLEAR POLYCARBONATE COVERS AND FINGER SAFE COVERS
- cULus LISTED PER UL 1953 FOR COPPER AND ALUMINUM CONDUCTORS AT 90°C AND 600 V
- AMP RATING PER POLE: 760
- FLAMMABILITY RATING PER UL 94V-0
- INTRUSION PROTECTION COMPLIANT WITH IEC 60529 AND IP-20
- UL ASSIGNED SHORT CIRCUIT CURRENT RATING OF 100,000 AMPS WHEN PROPERLY FUSED
- CONNECTORS ARE MANUFACTURED WITH TWO SIDE WALL LABELS THAT SPECIFY WIRE RANGE, INSTALLATION TORQUE, ELECTRICAL RATINGS, AND FUSE INFORMATION

1	ALUMINUM DISTRIBUTION BLOCK	
QTY.	PT.	NAME OR DESCRIPTION
		ALUMINUM DISTRIBUTION BLOCK for 500 MCM - 4 AWG TO 4/0 - 6 AWG
REF. DWG'S: 5J25-96453		H:\5J25\APDB-24-500
DRAWN BY: CLT		DATE: 7/31/2023
SCALE: 1:2		CHK'D: QJB
INTERPRET PER ASME Y14.5-2009		FILE: 5J25
SIZE: B		DWG. NO. APDB-24-500
REV. -		SHEET 2 OF 3

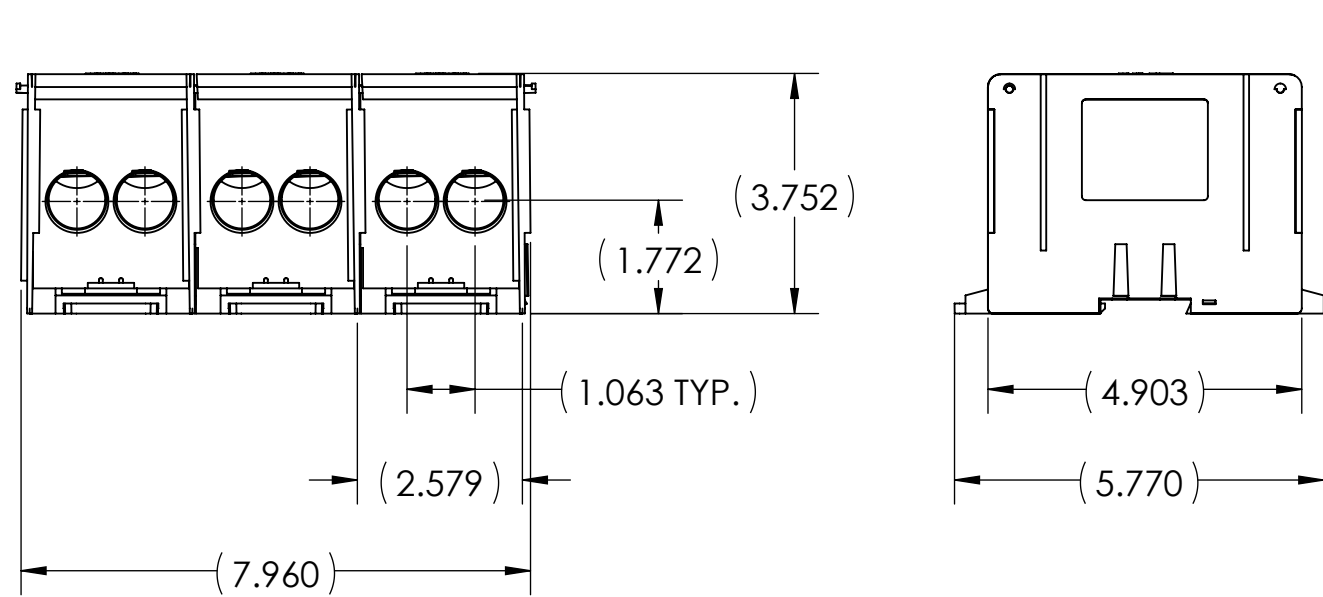
NO.	ECN	DATE
REVISIONS		



LINE SIDE				LOAD SIDE			
# OF PORTS	WIRE RANGE	HEX SIZE	INSTALL TORQUE (IN•LB)	# OF PORTS	WIRE RANGE	HEX SIZE	INSTALL TORQUE (IN•LB)
2	500 MCM-4 AWG	5/16	443	4	4/0-6 AWG	1/4	4/0-1/0 AWG - 225 1-6 AWG - 120



- METAL STAMP TO READ:
- 500-4
 - 4/0-6
 - AL9CU
 - 24-500



NOTES:

- ALL DIMENSIONS IN INCHES UNLESS OTHERWISE SPECIFIED
- APPROXIMATE ASSEMBLY WEIGHT: 3.508 LB
- SNAP LOCK MODULAR DESIGN ALLOWS FOR INDIVIDUAL BLOCKS TO BE EASILY ASSEMBLED
- CONNECTOR MANUFACTURED FROM HIGH STRENGTH TIN PLATED ALUMINUM
- INSULATING BASE AND SIDE COVERS ARE MANUFACTURED FROM GLASS REINFORCED NYLON 616
- BLOCKS COME COMPLETE WITH CLEAR POLYCARBONATE COVERS AND FINGER SAFE COVERS
- cULus LISTED PER UL 1953 FOR COPPER AND ALUMINUM CONDUCTORS AT 90°C AND 600 V
- AMP RATING PER POLE: 760
- FLAMMABILITY RATING PER UL 94V-0
- INTRUSION PROTECTION COMPLIANT WITH IEC 60529 AND IP-20
- UL ASSIGNED SHORT CIRCUIT CURRENT RATING OF 100,000 AMPS WHEN PROPERLY FUSED
- CONNECTORS ARE MANUFACTURED WITH TWO SIDE WALL LABELS THAT SPECIFY WIRE RANGE, INSTALLATION TORQUE, ELECTRICAL RATINGS, AND FUSE INFORMATION

1	ALUMINUM DISTRIBUTION BLOCK	
QTY.	PT.	NAME OR DESCRIPTION
		ALUMINUM DISTRIBUTION BLOCK for 500 MCM - 4 AWG TO 4/0 - 6 AWG
REF. DWG'S: 5J25-96453		H:\5J25\APDB-24-500
DRAWN BY: CLT		DATE: 7/31/2023
SCALE: 1:3		CHK'D: QJB
SIZE: B		INTERPRET PER ASME Y14.5-2009
DWG. NO. APDB-24-500		FILE: 5J25
CAT. NO. APDB-24-500-3		REV. -
PENNUNION 229 WATERFORD STREET EDINBORO, PA 16412 USA		

NO.	ECN	DATE
REVISIONS		