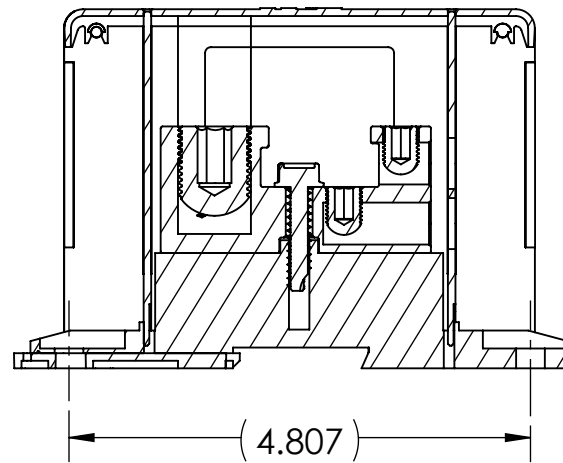
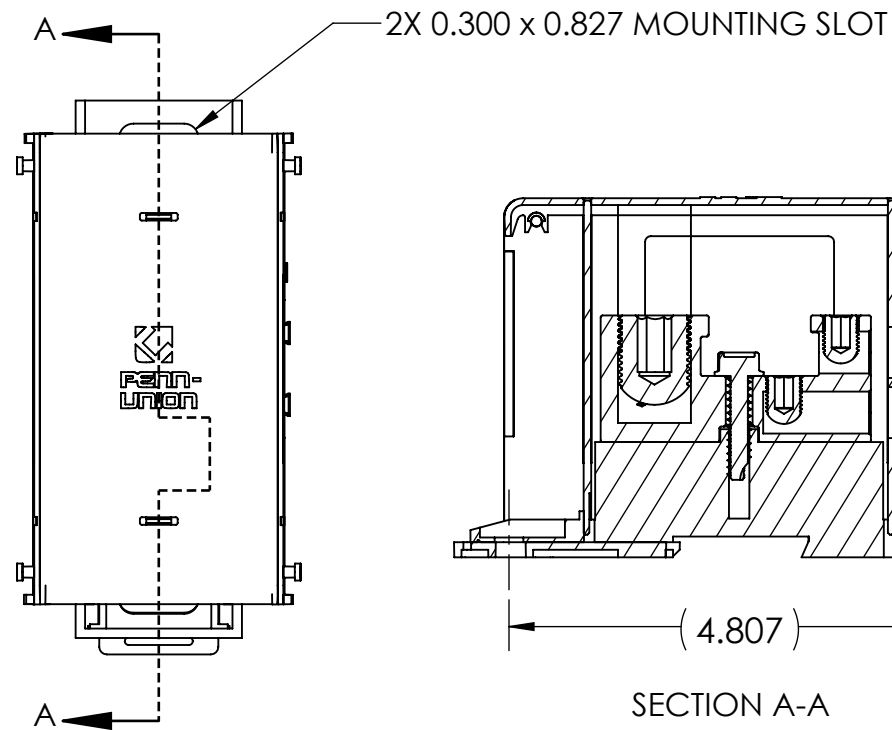
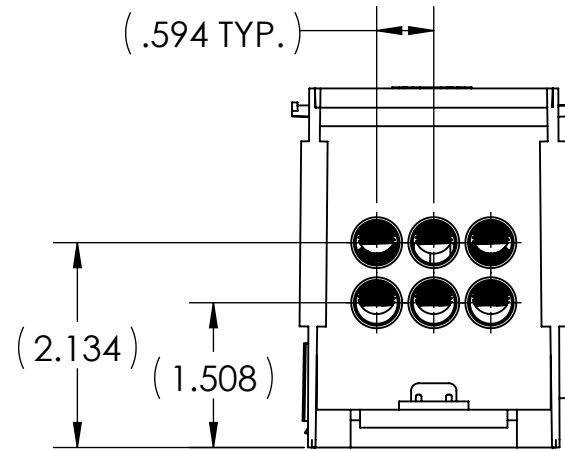




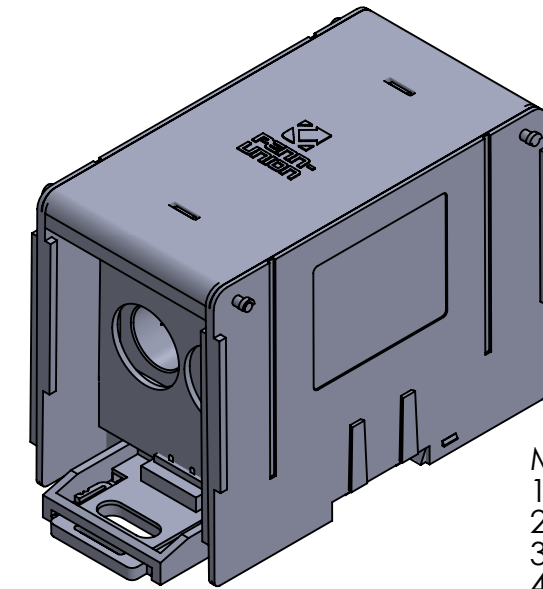
LINE SIDE				LOAD SIDE			
# OF PORTS	WIRE RANGE	HEX SIZE	INSTALL TORQUE (IN•LB)	# OF PORTS	WIRE RANGE	HEX SIZE	INSTALL TORQUE (IN•LB)
2	350 MCM-6 AWG	5/16	375	6	2/0-14 AWG	3/16	2/0-8 AWG - 120 10-14 AWG - 20



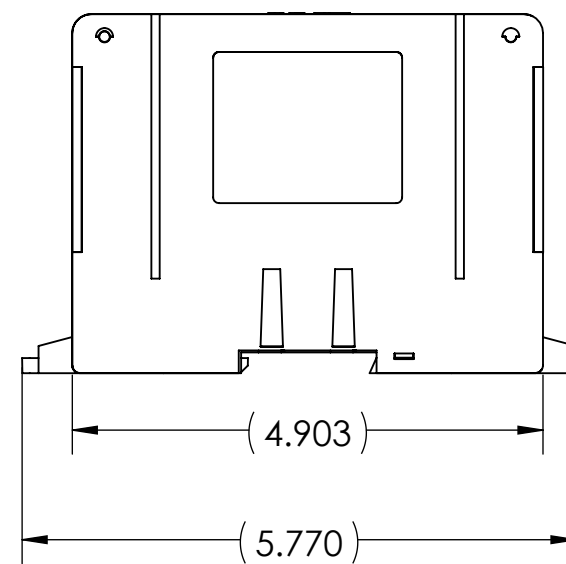
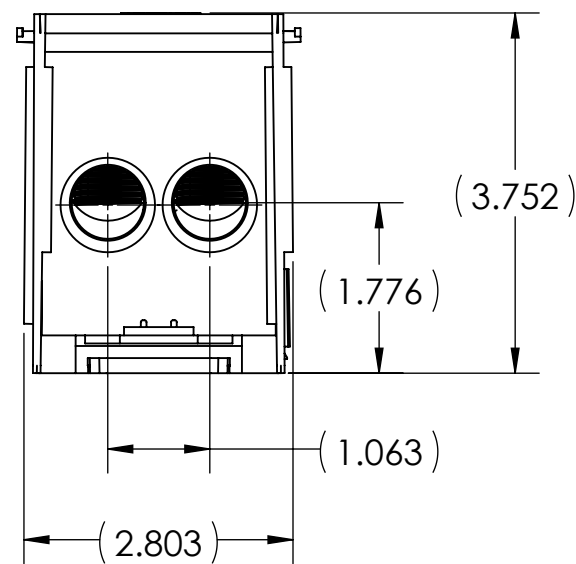
SECTION A-A



VIEW D-D



- METAL STAMP TO READ:
- 350-6
 - 2/0-14
 - AL9CU
 - 26-350



NOTES:

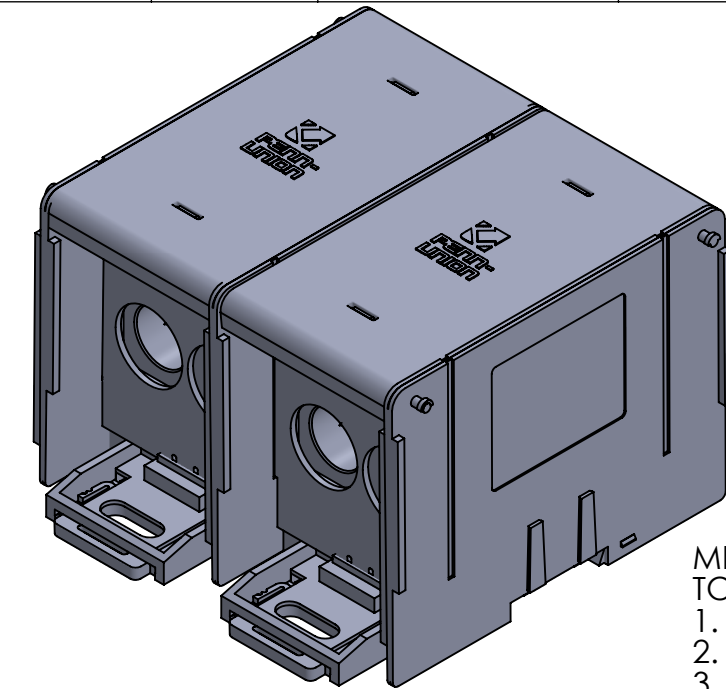
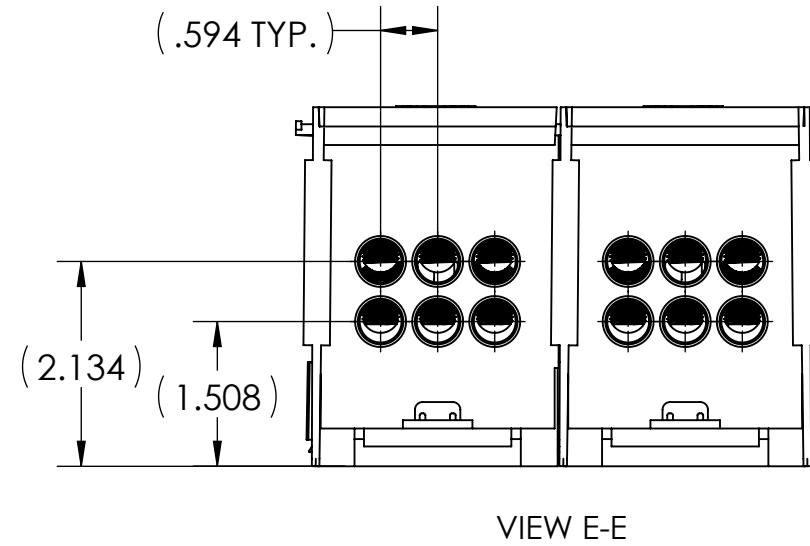
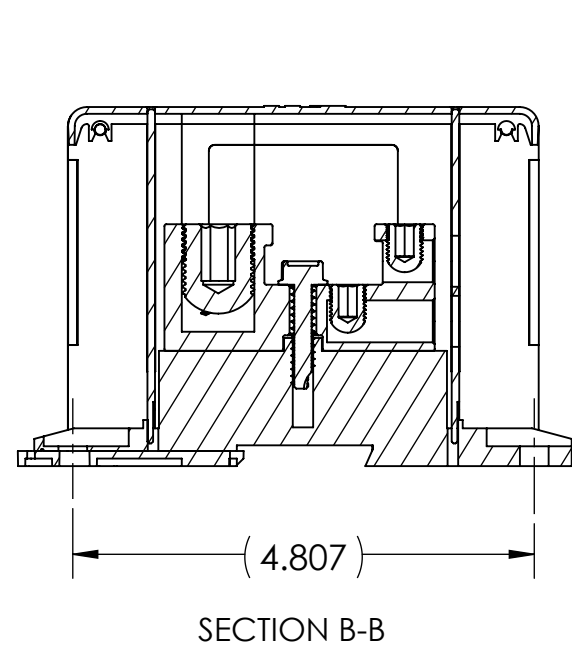
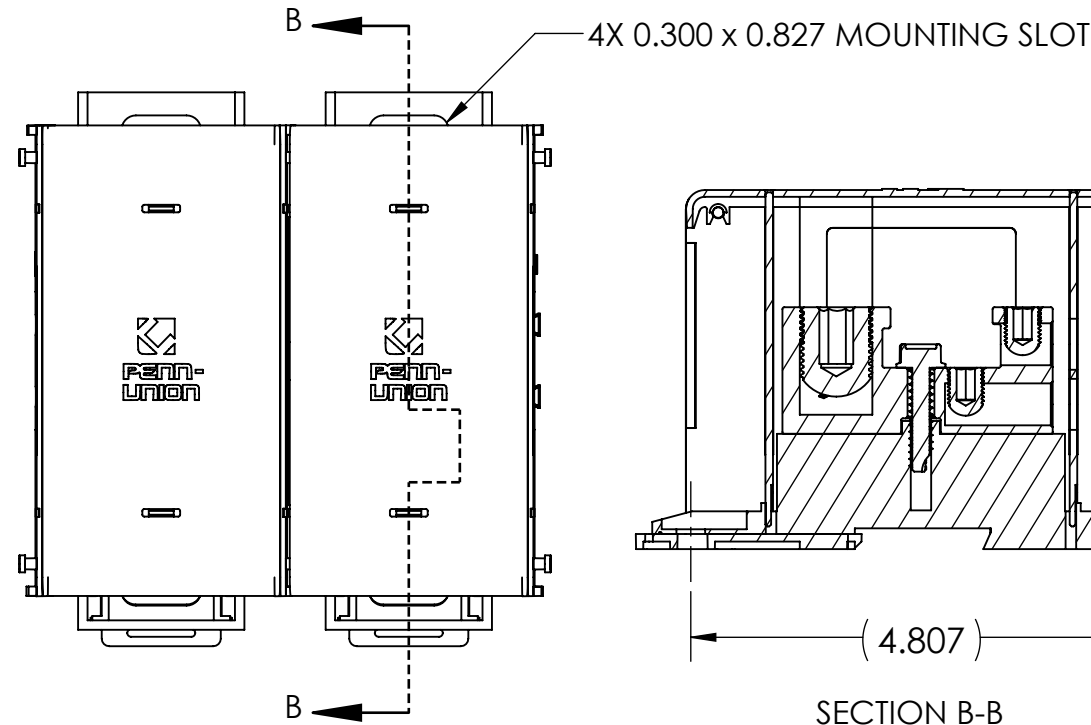
- ALL DIMENSIONS IN INCHES UNLESS OTHERWISE SPECIFIED
- APPROXIMATE ASSEMBLY WEIGHT: 1.065 LB
- SNAP LOCK MODULAR DESIGN ALLOWS FOR INDIVIDUAL BLOCKS TO BE EASILY ASSEMBLED
- CONNECTOR MANUFACTURED FROM HIGH STRENGTH TIN PLATED ALUMINUM
- INSULATING BASE AND SIDE COVERS ARE MANUFACTURED FROM GLASS REINFORCED NYLON 616
- BLOCKS COME COMPLETE WITH CLEAR POLYCARBONATE COVERS AND FINGER SAFE COVERS
- cULus LISTED PER UL 1953 FOR COPPER AND ALUMINUM CONDUCTORS AT 90°C AND 600 V
- AMP RATING PER POLE: 620
- FLAMMABILITY RATING PER UL 94V-0
- INTRUSION PROTECTION COMPLIANT WITH IEC 60529 AND IP-20
- UL ASSIGNED SHORT CIRCUIT CURRENT RATING OF 100,000 AMPS WHEN PROPERLY FUSED
- CONNECTORS ARE MANUFACTURED WITH TWO SIDE WALL LABELS THAT SPECIFY WIRE RANGE, INSTALLATION TORQUE, ELECTRICAL RATINGS, AND FUSE INFORMATION

NO.	ECN	DATE
REVISIONS		

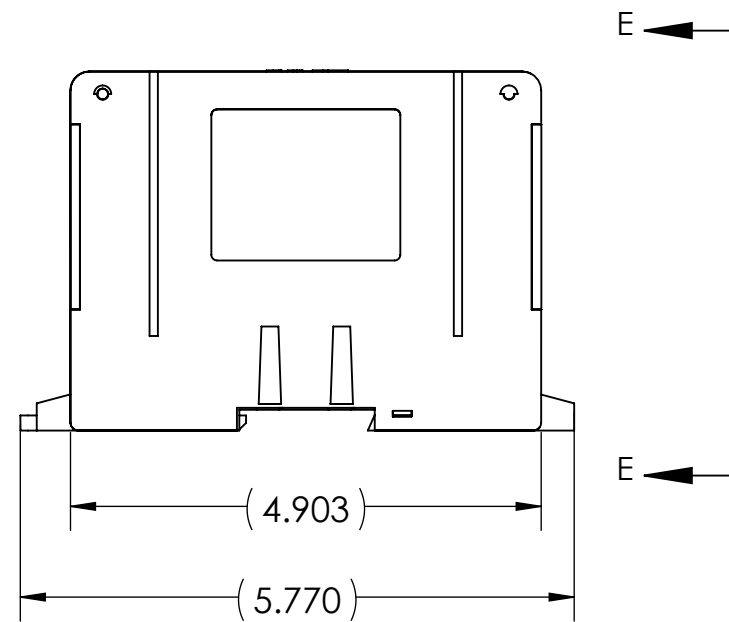
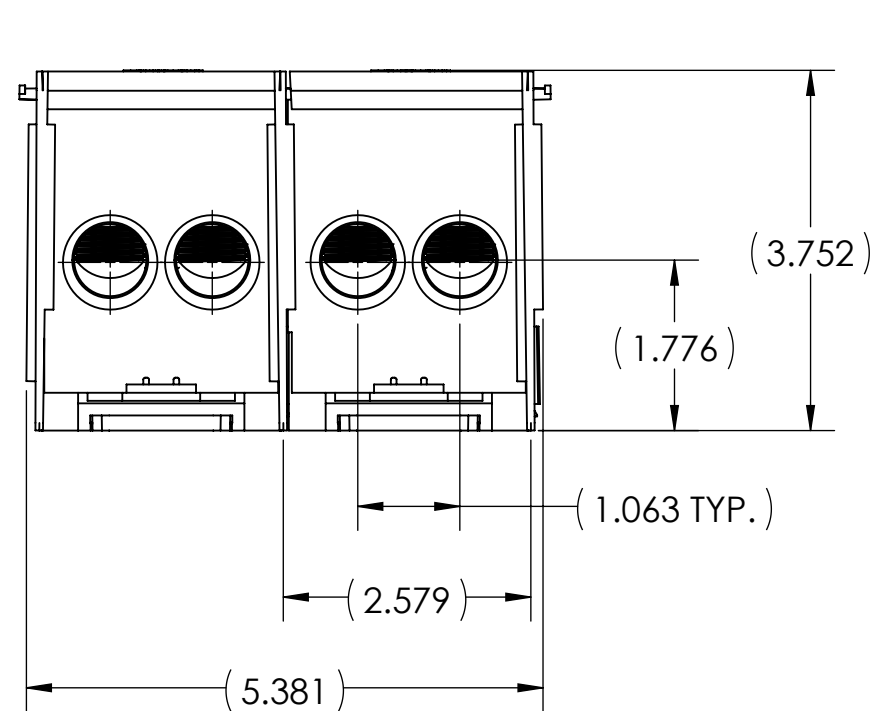
QTY.	PT.	NAME OR DESCRIPTION
1		ALUMINUM DISTRIBUTION BLOCK
		ALUMINUM DISTRIBUTION BLOCK for 350 MCM - 6 AWG TO 2/0 - 14 AWG
REF. DWG'S: 5J25-96459		H:\5J25\APDB-26-350
DRAWN BY: CLT		DATE: 7/28/2023
SCALE: 1:2		CHK'D: QJB
SIZE: B		INTERPRET PER ASME Y14.5-2009
DWG. NO. APDB-26-350		FILE: 5J25
229 WATERFORD STREET EDINBORO, PA 16412 USA		REV. -
SHEET 1 OF 3		



LINE SIDE				LOAD SIDE			
# OF PORTS	WIRE RANGE	HEX SIZE	INSTALL TORQUE (IN•LB)	# OF PORTS	WIRE RANGE	HEX SIZE	INSTALL TORQUE (IN•LB)
2	350 MCM-6 AWG	5/16	375	6	2/0-14 AWG	3/16	2/0-8 AWG - 120 10-14 AWG - 20



METAL STAMP TO READ:
 1. 350-6
 2. 2/0-14
 3. AL9CU
 4. 26-350



NOTES:

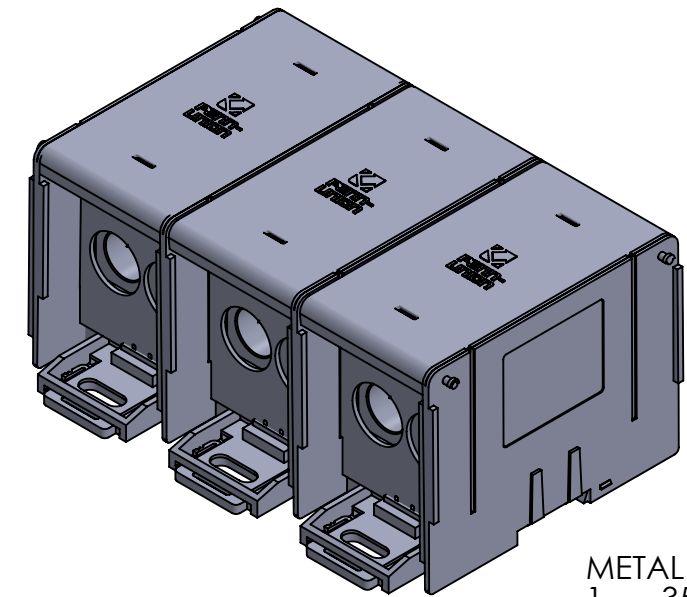
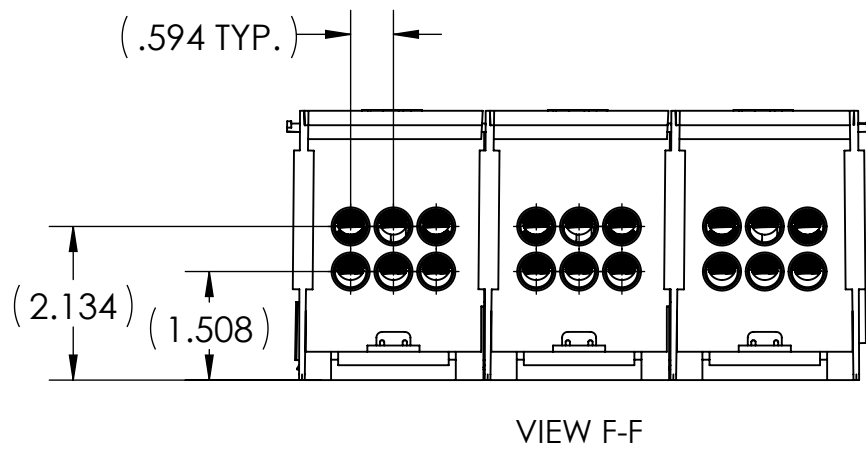
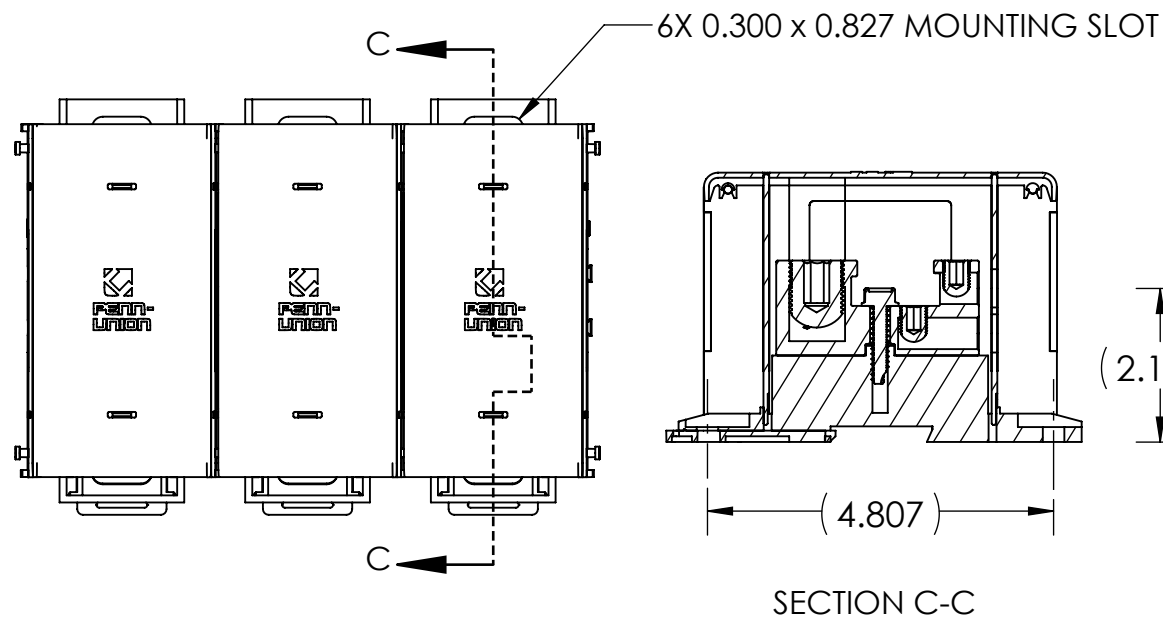
- ALL DIMENSIONS IN INCHES UNLESS OTHERWISE SPECIFIED
- APPROXIMATE ASSEMBLY WEIGHT: 1.788 LB
- SNAP LOCK MODULAR DESIGN ALLOWS FOR INDIVIDUAL BLOCKS TO BE EASILY ASSEMBLED
- CONNECTOR MANUFACTURED FROM HIGH STRENGTH TIN PLATED ALUMINUM
- INSULATING BASE AND SIDE COVERS ARE MANUFACTURED FROM GLASS REINFORCED NYLON 616
- BLOCKS COME COMPLETE WITH CLEAR POLYCARBONATE COVERS AND FINGER SAFE COVERS
- cULus LISTED PER UL 1953 FOR COPPER AND ALUMINUM CONDUCTORS AT 90°C AND 600 V
- AMP RATING PER POLE: 620
- FLAMMABILITY RATING PER UL 94V-0
- INTRUSION PROTECTION COMPLIANT WITH IEC 60529 AND IP-20
- UL ASSIGNED SHORT CIRCUIT CURRENT RATING OF 100,000 AMPS WHEN PROPERLY FUSED
- CONNECTORS ARE MANUFACTURED WITH TWO SIDE WALL LABELS THAT SPECIFY WIRE RANGE, INSTALLATION TORQUE, ELECTRICAL RATINGS, AND FUSE INFORMATION

NO.	ECN	DATE
REVISIONS		

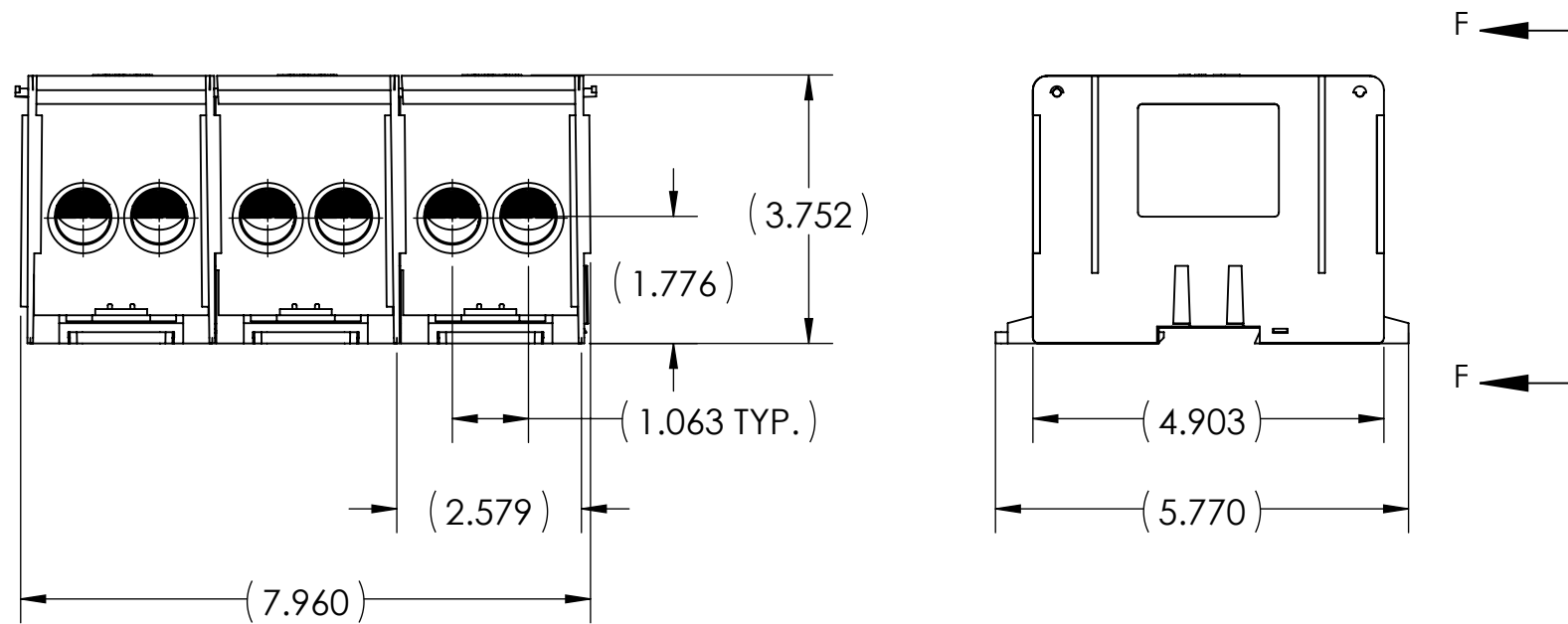
1	ALUMINUM DISTRIBUTION BLOCK	
QTY.	PT.	NAME OR DESCRIPTION
		ALUMINUM DISTRIBUTION BLOCK for 350 MCM - 6 AWG TO 2/0 - 14 AWG
REF. DWG'S: 5J25-96459		H:\5J25\APDB-26-350
DRAWN BY: CLT		DATE: 7/28/2023
SCALE: 1:2		CHK'D: QJB
INTERPRET PER ASME Y14.5-2009		FILE: 5J25
SIZE: B		DWG. NO. APDB-26-350
REV. -		SHEET 2 OF 3



LINE SIDE				LOAD SIDE			
# OF PORTS	WIRE RANGE	HEX SIZE	INSTALL TORQUE (IN•LB)	# OF PORTS	WIRE RANGE	HEX SIZE	INSTALL TORQUE (IN•LB)
2	350 MCM-6 AWG	5/16	375	6	2/0-14 AWG	3/16	2/0-8 AWG - 120 10-14 AWG - 20



METAL STAMP TO READ:
 1. 350-6
 2. 2/0-14
 3. AL9CU
 4. 26-350



NOTES:

- ALL DIMENSIONS IN INCHES UNLESS OTHERWISE SPECIFIED
- APPROXIMATE ASSEMBLY WEIGHT: 2.635 LB
- SNAP LOCK MODULAR DESIGN ALLOWS FOR INDIVIDUAL BLOCKS TO BE EASILY ASSEMBLED
- CONNECTOR MANUFACTURED FROM HIGH STRENGTH TIN PLATED ALUMINUM
- INSULATING BASE AND SIDE COVERS ARE MANUFACTURED FROM GLASS REINFORCED NYLON 616
- BLOCKS COME COMPLETE WITH CLEAR POLYCARBONATE COVERS AND FINGER SAFE COVERS
- cULus LISTED PER UL 1953 FOR COPPER AND ALUMINUM CONDUCTORS AT 90°C AND 600 V
- AMP RATING PER POLE: 620
- FLAMMABILITY RATING PER UL 94V-0
- INTRUSION PROTECTION COMPLIANT WITH IEC 60529 AND IP-20
- UL ASSIGNED SHORT CIRCUIT CURRENT RATING OF 100,000 AMPS WHEN PROPERLY FUSED
- CONNECTORS ARE MANUFACTURED WITH TWO SIDE WALL LABELS THAT SPECIFY WIRE RANGE, INSTALLATION TORQUE, ELECTRICAL RATINGS, AND FUSE INFORMATION

1	ALUMINUM DISTRIBUTION BLOCK	
QTY.	PT.	NAME OR DESCRIPTION
		ALUMINUM DISTRIBUTION BLOCK for 350 MCM - 6 AWG TO 2/0 - 14 AWG
REF. DWG'S: 5J25-96459		H:\5J25\APDB-26-350
DRAWN BY: CLT		DATE: 7/28/2023
SCALE: 3:8		INTERPRET PER ASME Y14.5-2009
SIZE: B		FILE: 5J25
DWG. NO. APDB-26-350		REV. -
CAT. NO. APDB-26-350-3		
 229 WATERFORD STREET EDINBORO, PA 16412 USA		

NO.	ECN	DATE
REVISIONS		