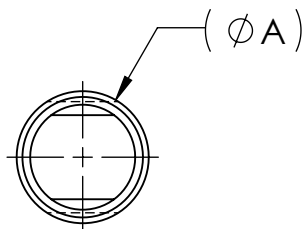
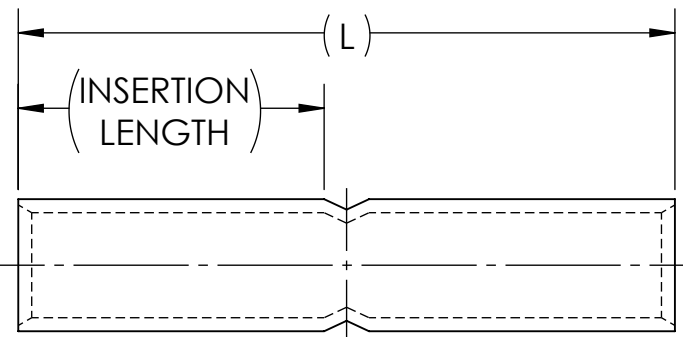
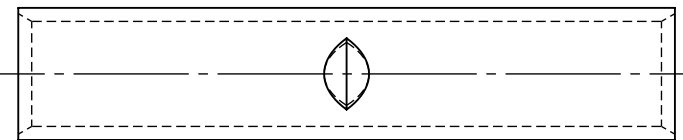
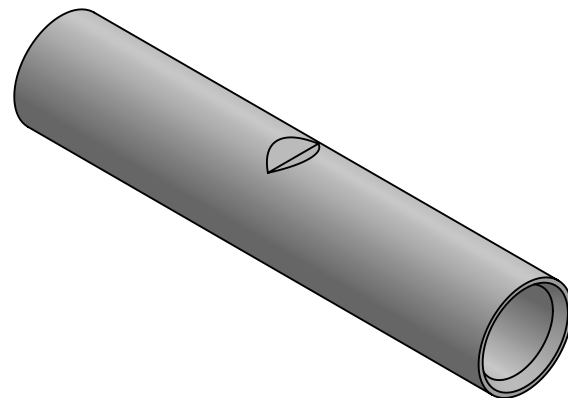




BBCU-4/0 INK STAMP IS SHOWN FOR REFERENCE ONLY. INK STAMP WILL VARY BY SKU. INK STAMP HIDDEN FROM VIEWS FOR CLARITY.



REV.	CAT. NO.	CONDUCTOR SIZE	DIMENSIONS			APPROX. WEIGHT (LB)
			L	INSERTION LENGTH	φ A	
0	BBCU-8	8 AWG COPPER	1.98	.90	.27	0.019
0	BBCU-6	6 AWG COPPER	2.37	1.09	.29	0.028
0	BBCU-4	4 AWG COPPER	2.38	1.09	.34	0.033
0	BBCU-3	3 AWG COPPER	2.38	1.09	.38	0.036
0	BBCU-2	2 AWG COPPER	2.63	1.22	.42	0.052
0	BBCU-1	1 AWG COPPER	2.88	1.34	.46	0.060
0	BBCU-1/0	1/0 AWG COPPER	2.88	1.34	.51	0.079
0	BBCU-2/0	2/0 AWG COPPER	3.12	1.47	.56	0.094
0	BBCU-3/0	3/0 AWG COPPER	3.13	1.47	.62	0.108
0	BBCU-4/0	4/0 AWG COPPER	3.42	1.59	.69	0.149
0	BBCU-025	250 MCM COPPER	3.38	1.59	.75	0.177
0	BBCU-030	300 MCM COPPER	4.13	1.97	.81	0.246
0	BBCU-035	350 MCM COPPER	4.13	1.97	.88	0.286
0	BBCU-040	400 MCM COPPER	4.38	2.09	.95	0.361
0	BBCU-050	500 MCM COPPER	4.63	2.22	1.06	0.498
0	BBCU-060	600 MCM COPPER	5.50	2.66	1.19	0.773
0	BBCU-065	650 MCM COPPER	5.63	2.72	1.23	0.841
0	BBCU-075	750 MCM COPPER	5.88	2.84	1.30	0.929
0	BBCU-080	800 MCM COPPER	6.00	2.91	1.35	0.904
0	BBCU-100	1000 MCM COPPER	6.13	2.97	1.50	1.350
1	BBCU-125	1250 MCM COPPER	6.50	3.16	1.74	1.946
0	BBCU-150	1500 MCM COPPER	6.50	3.16	1.84	2.122
0	BBCU-200	2000 MCM COPPER	7.00	3.41	2.13	3.063

NOTES:

- ALL DIMENSIONS IN INCHES UNLESS OTHERWISE SPECIFIED
- TIN-PLATED TO INHIBIT CORROSION
- RATED FOR COPPER CONDUCTORS ONLY
- BEVELED ENTRY FOR EASY CABLE INSERTION
- POSITIVE CABLE STOPS TO ENSURE PROPER INSERTION OF CONDUCTORS TO FULL DEPTH
- CONNECTORS ARE SUITABLE FOR USE IN CIRCUITS WITH VOLTAGES UP TO 35 KV IF TAPED ACCORDING TO ACCEPTED PRACTICES, 5 KV IS THE MAXIMUM VOLTAGE LEVEL IN ALL BARE SPLICE APPLICATIONS
- FOR APPLICATIONS GREATER THAN 2000 VOLTS, CONSULT CABLE MANUFACTURER FOR VOLTAGE STRESS RELIEF INSTRUCTIONS
- CONNECTORS FROM 8 AWG - 2000 MCM ARE UL LISTED PER UL486A-B AND CSA CERTIFIED PER C22.2 NO.65 FOR POWER APPLICATIONS UP TO 90°C
- CONNECTORS FROM 8 AWG - 500 MCM ARE UL LISTED FOR GROUNDING, BONDING, AND DIRECT BURIAL APPLICATIONS PER UL467
- CONNECTORS FROM 8 AWG - 250 MCM ARE CSA CERTIFIED FOR GROUNDING, BONDING, AND DIRECT BURIAL APPLICATIONS PER C22.2 NO.41



X		COPPER TUBING	
QTY.	PT.	NAME OR DESCRIPTION	
		LONG BARREL CRIMP SPLICE for COPPER CONDUCTORS	
REF. DWG'S:		H:\2H11\BBCU_SERIES_C	
DRAWN BY: QB		DATE: 8/16/2021	CHK'D: NAK
SCALE: 1:1		INTERPRET PER ASME Y14.5-2009	
FILE: 2H11			
SIZE: B			
DWG. NO. BBCU SERIES		REV. -	
SHEET 1 OF 2			


NO.	ECN	DATE
REVISIONS		

CATALOG NUMBER	WIRE SIZE RECOMMENDATIONS										STRIP LENGTH (IN.)	DIE COLOR CODE	INSTALLATION TOOLING																																										
	CLASS B & C SIZE & STRANDING	CLASS I SIZE & STRANDING	CLASS K SIZE & STRANDING	DLO SIZE & STRANDING	CLASS H SIZE & STRANDING	CLASS G SIZE & STRANDING	CLASS M SIZE & STRANDING	METRIC SIZE & DIA.	NAVY	AIR CRAFT			HYDRAULIC TOOLING INFORMATION					MECHANICAL CRIMP TOOLS																																					
													PUC CRIMP TOOL NUMBERS	PUC DIE CATALOG NUMBER	BURNDY CRIMP TOOL NUMBERS	BURNDY DIE INDEX NUMBER	T&B TBM-15 DIE CODE NUMBER	ILSCO & RIGID DIELESS CRIMP TOOLS	CLASS B & C	CLASS I, K, & DLO																																			
BBCU-8	#8 AWG 7 OR 19	#8 AWG 41/24	-	-	* #8 AWG 133/.0111	* #8 AWG 49/.0184	#8 AWG 420/34	6MM ² 3.21MM	#23	AN-8	1-1/8	RED	TPU-12, TPU-18 & TPU-1500H	T-49	Y35, Y39 & Y750	6	21	ILSCO IVTB-6 & RIGID RE-6 WITH 4P-6 CRIMP HEAD	PUC TDM-250, TDM-408, TDM-500, BURNDY MY29-3	PUC TDM-250XF BURNDY MY29-11																																			
BBCU-6	#6 AWG SOLID, 7 OR 19	#6 AWG 63/24	-	-	* #7 AWG 133/.0125	* #7 AWG 49/.0206	#7 AWG 532/24	10MM ² 4.12MM	-	-	1-1/4	BLUE	TPU-6, TPU-12, TPU-18 & TPU-1500H	T-7		7 OR 374	24		PUC TDM-250, TDM-408, TDM-500, BURNDY MY29-3	PUC TDM-250XF BURNDY MY29-11																																			
BBCU-4	#4 AWG SOLID, 7 OR 19	-	-	-	* #5 AWG 133/.0158	* #5 AWG 49/.0260	#5 AWG 836/34	* 20MM ² 5.72MM	#40	-	1-1/4	GRAY		T-8		8 OR 346	29				PUC TDM-250, TDM-408, TDM-500, BURNDY MY29-3	PUC TDM-250XF BURNDY MY29-11																																	
BBCU-3	#3 AWG 7 OR 19	#4 AWG 105/24	#4 AWG 420/30	#4 AWG 105/24	#4 AWG 133/.0177	#4 AWG 49/.0292	#4 AWG 1064/34	25MM ² 6.60MM	#50	AN-4	1-1/4	WHITE		T-9		9	-						PUC TDM-250, TDM-408, TDM-500, BURNDY MY29-3	PUC TDM-250XF BURNDY MY29-11																															
BBCU-2	#2 AWG 7 OR 19	-	-	-	* #3 AWG 133/.0199	* #3 AWG 49/.0328	#3 AWG 1323/34	* 30MM ² 7.01MM	#60	-	1-3/8	BROWN		T-10		10	33								PUC TDM-250, TDM-408, TDM-500, BURNDY MY29-3	PUC TDM-250XF BURNDY MY29-11																													
BBCU-1	#1 AWG 19 OR 37	#2 AWG 161/24	#2 AWG 665/30	#2 AWG 150/24	#2 AWG 133/.0223	#2 AWG 49/.0368	#2 AWG 1666/34	* 40MM ² 8.20MM	#75	AN-2	1-1/2	GREEN		T-11		11 OR 375	37										PUC TDM-250, TDM-408, TDM-500, BURNDY MY29-3	PUC TDM-250XF BURNDY MY29-11																											
BBCU-1/0	1/0 AWG 19 OR 37	-	#1 AWG 836/30	#1 AWG 225/24	#1 AWG 259/.0180	#1 AWG 133/.0251	#1 AWG 2107/34	50MM ² 9.27MM	#100	AN-1	1-1/2	PINK		T-12		12 OR 348	42												PUC TDM-250, TDM-408, TDM-500, BURNDY MY29-3	PUC TDM-250XF BURNDY MY29-11																									
BBCU-2/0	2/0 AWG 19 OR 37	1/0 AWG 266/24	1/0 AWG 1064/30	1/0 AWG 275/24	1/0 AWG 259/.0202	1/0 AWG 133/.0282	1/0 AWG 2646/34	70MM ² 10.92MM	#125	AN-1/0	1-5/8	BLACK		T-13		13	45														PUC TDM-250, TDM-408, TDM-500, BURNDY MY29-3	PUC TDM-250XF BURNDY MY29-11																							
BBCU-3/0	3/0 AWG 19 OR 37	2/0 AWG 342/24	2/0 AWG 1323/30	2/0 AWG 325/24	2/0 AWG 259/.0227	2/0 AWG 133/.0316	-	* 85MM ² 11.94MM	#150	-	1-5/8	ORANGE		T-14		14	50																PUC TDM-250, TDM-408, TDM-500, BURNDY MY29-3	PUC TDM-250XF BURNDY MY29-11																					
BBCU-4/0	4/0 AWG 19 OR 37	-	3/0 AWG 1666/30	3/0 AWG 450/24	3/0 AWG 259/.0255	3/0 AWG 133/.0355	2/0 AWG 3325/34	95MM ² 12.80MM	#200	AN-2/0 AN-3/0	1-3/4	PURPLE		T-15		15	54																		PUC TDM-250, TDM-408, TDM-500, BURNDY MY29-3	PUC TDM-250XF BURNDY MY29-11																			
BBCU-025	250 MCM 37 OR 61	-	-	-	-	-	3/0 AWG 4256/34	120MM ² 14.4MM	-	-	1-3/4	YELLOW		T-16		16	62																				PUC TDM-250, TDM-500, BURNDY MY29-3	PUC TDM-250XF BURNDY MY29-11																	
BBCU-030	300 MCM 37 OR 61	4/0 AWG 532/24	4/0 AWG 2107/30	4/0 AWG 550/24	* 4/0 AWG 259/.0286	* 4/0 AWG 133/.0399	4/0 AWG 5320/34	150MM ² 16.00MM	#300	AN-4/0	2-1/8	WHITE		TPU-6, TPU-12, TPU-18, TPU-1500H & HDT-1000		T-17	17																						66	PUC TDM-250, TDM-500, BURNDY MY29-3	PUC TDM-250XF BURNDY MY29-11														
BBCU-035	350 MCM 37 OR 61	-	-	262 MCM 650/24	* 250 MCM 427/.0242	250 MCM 259/.0311	-	180MM ² 17.42MM	#350	-	2-1/8	RED		T-18		18 OR 324	71																						PUC TDM-250, TDM-500, BURNDY MY29-3			PUC TDM-250XF BURNDY MY29-11													
BBCU-040	400 MCM 37 OR 61	-	-	313 MCM 775/24	300 MCM 427/.0265	300 MCM 259/.0340	250 MCM 6384/34	185MM ² 17.80MM	#400	-	2-1/4	BLUE		T-19		19 OR 470	76																										PUC TDM-250, TDM-500, BURNDY MY29-3	PUC TDM-250XF BURNDY MY29-11											
BBCU-050	500 MCM 37 OR 61	350 MCM 882/24	-	373 MCM 925/24	400 MCM 427/.0306	400 MCM 259/.0393	350 MCM 8806/34	240MM ² 20.30MM	-	-	2-3/8	BROWN		T-20		20 OR 299	87																												PUC TDM-250, TDM-500, BURNDY MY29-3	PUC TDM-250XF BURNDY MY29-11									
BBCU-060	600 MCM 61 OR 91	-	-	444 MCM 1100/24	450 MCM 427/.0325	450 MCM 259/.0417	400 MCM 10101/34	300MM ² 22.63MM	-	-	2-13/16	GREEN		T-22		22 OR 472	94																														PUC TDM-250, TDM-500, BURNDY MY29-3	PUC TDM-250XF BURNDY MY29-11							
BBCU-065	650 MCM 61 OR 91	500 MCM 1225/24	-	535 MCM 1325/24	500 MCM 427/.0342	500 MCM 259/.0439	450 MCM 11396/34	-	-	-	2-7/8	PINK		TPU-6FT, TPU-12, TPU-18, TPU-1500H & HDT-1000		T-300	300																																99	PUC TDM-250, TDM-500, BURNDY MY29-3	PUC TDM-250XF BURNDY MY29-11				
BBCU-075	750 MCM 61 OR 91	-	-	646 MCM 1600/24	* 550 MCM 703/.0280	* 600 MCM 703/.0292	500 MCM 12691/34	-	-	-	3	BLACK		T-24		24 OR 473	106																																PUC TDM-250, TDM-500, BURNDY MY29-3			PUC TDM-250XF BURNDY MY29-11			
BBCU-080	800 MCM 61 OR 91	-	-	-	* 650 MCM 703/.0304	* 700 MCM 427/.0405	550 MCM 13664/34	400MM ² 26.1MM	-	-	3-1/16	ORANGE		TPU-18, TPU-1500H, TPU-15BH & HDT-1000		-	25																																				107	PUC TDM-250, TDM-500, BURNDY MY29-3	PUC TDM-250XF BURNDY MY29-11
BBCU-100	1000 MCM 61 OR 91	750 MCM 1862/24	-	777 MCM 1925/24	* 700 MCM 703/.0316	* 750 MCM 703/.0327	600 MCM 14945/34	500MM ² 29.3MM	-	-	3-1/8	WHITE		TPU-18, TPU-1500H & HDT-1000		T-100PH USE WITH TPU-18 & T-27P USE WITH TPU-1500H	27																																				125		
* BBCU-125	1250 MCM	-	-	-	-	-	-	-	-	-	3-5/16	YELLOW	-	-	29	-	PUC TDM-250, TDM-500, BURNDY MY29-3	PUC TDM-250XF BURNDY MY29-11																																					
BBCU-150	1500 MCM 91 OR 127	-	-	1111 MCM 2750/24	-	-	-	-	-	-	3-5/16	GREEN	-	-	31	-			PUC TDM-250, TDM-500, BURNDY MY29-3	PUC TDM-250XF BURNDY MY29-11																																			
BBCU-200	2000 MCM 127 OR 169	-	-	-	-	-	-	-	-	-	3-9/16	BROWN	-	-	34	-					PUC TDM-250, TDM-500, BURNDY MY29-3	PUC TDM-250XF BURNDY MY29-11																																	

* NOT UL LISTED

TOOLING NOTES:

1. TPU-12 INCLUDES TPU-12B, TPU-12BH, TPU-12B42H, TPU-42B, TPU-12B42
2. TPU-18 INCLUDES TPU-18B, TPU-18BH
3. TPU-6 INCLUDES TPU-6FT, TPU-6FTH, TPU-6H, TPU-6FTB, TPU-6B
4. Y35 INCLUDES Y35, Y35-2, BAT35, BAT35C, Y35BH, Y35BH-4, Y35L, Y35L-1
5. Y39 INCLUDES Y39, Y39BH
6. Y750 INCLUDES Y750, Y750-2, BAT750, BAT750C, Y750BH, Y750BH-2
7. Y46 INCLUDES Y46, Y46C
8. Y48 INCLUDES Y48B, Y48BH
9. CONNECTORS ARE NOT UL/CSA FOR GROUNDING AND BONDING WHEN INSTALLED WITH THE ILSCO IVTB-6 OR RIGID RE-6 TOOLS

X		COPPER TUBING	
QTY.	PT.	NAME OR DESCRIPTION	
		LONG BARREL CRIMP SPLICE	
		for COPPER CONDUCTORS	
REF. DWG'S:		H:\2H11\BBCU_SERIES_C	
 229 WATERFORD STREET EDINBORO, PA 16412 USA		DRAWN BY: QB DATE: 8/16/2021 CHK'D: NAK	
		SCALE: 3:2 INTERPRET PER ASME Y14.5-2009 FILE: 2H11	
SEE TABLE	CAT. NO.	BBCU SERIES	
		SHEET 2 OF 2	