


DWG. NO.

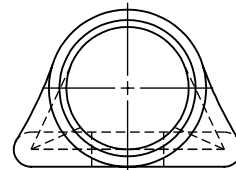
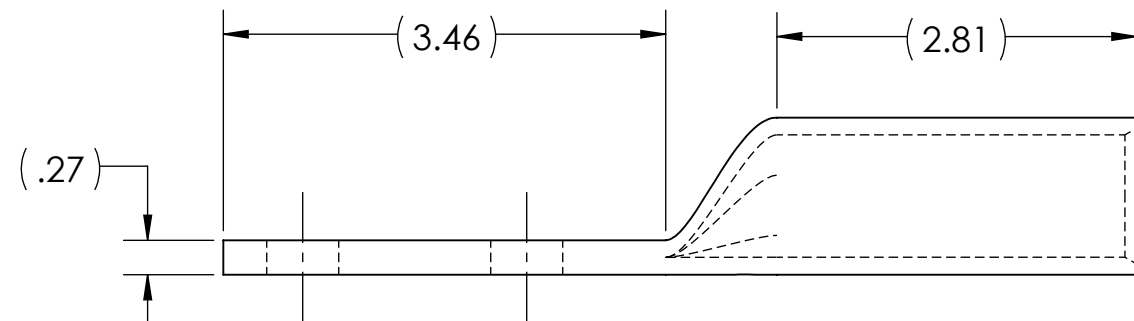
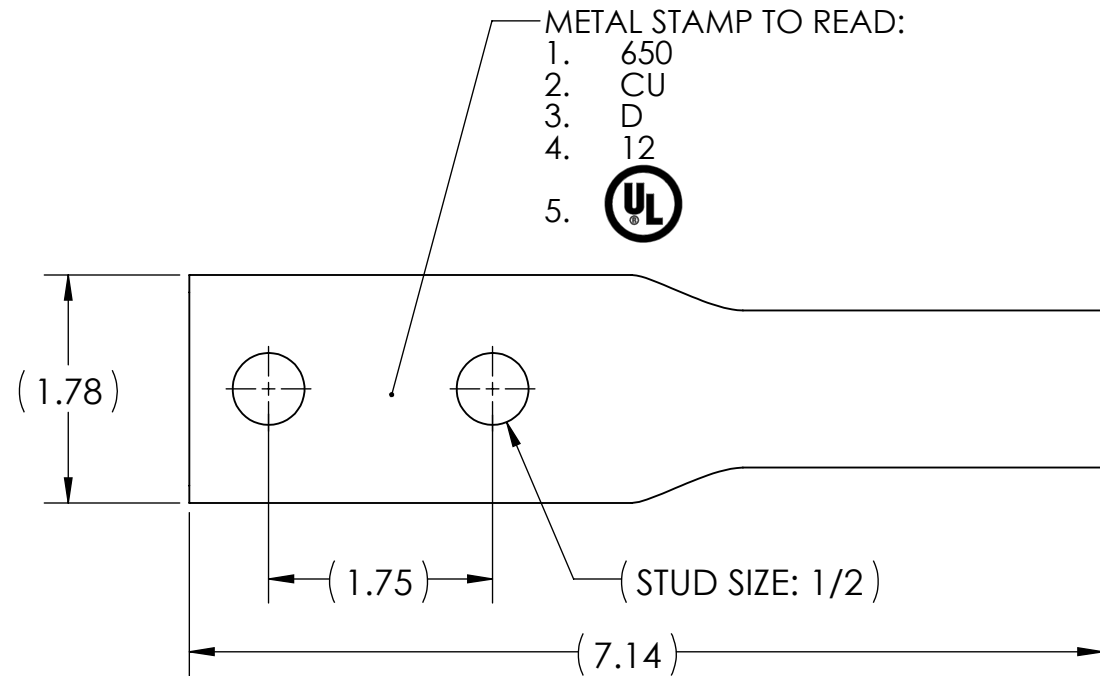
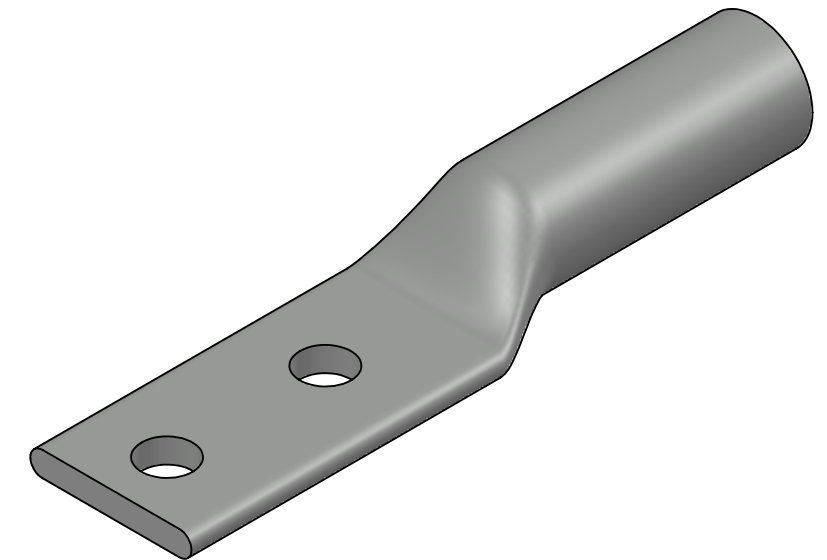
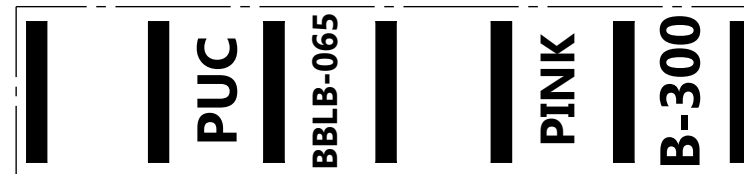
BBLB-065D

REV. -

METAL STAMP TO READ:

- 1. 650
- 2. CU
- 3. D
- 4. 12
- 5. 

INK STAMP REFERENCE



NOTES:

- 1. ALL DIMENSIONS IN INCHES UNLESS OTHERWISE SPECIFIED
- 2. SEE INSTALLATION SHEET FOR WIRE SIZE AND TOOLING RECOMMENDATIONS
- 3. TIN-PLATED TO INHIBIT CORROSION
- 4. RATED FOR COPPER CONDUCTORS ONLY
- 5. BEVELED ENTRY FOR EASY CABLE INSERTION
- 6. CONNECTORS ARE SUITABLE FOR VOLTAGES UP TO 35 KV
- 7. FOR APPLICATIONS GREATER THAN 2000 VOLTS, CONSULT CABLE MANUFACTURER FOR VOLTAGE STRESS RELIEF INSTRUCTIONS
- 8. CONNECTORS ARE UL LISTED PER UL486A-B FOR POWER APPLICATIONS UP TO 90°C
- 9. CONNECTORS ARE DESIGNED FOR USE WITH CORRESPONDING BBLB SERIES LUGS
- 10. APPROXIMATE WEIGHT: 1.026 LBS



NO.	ECN	DATE
REVISIONS		

				X		COPPER TUBING			
						QTY.	PT.	NAME OR DESCRIPTION	
								BOTTOM STACKING LUG for 650 MCM COPPER CONDUCTORS	
						REF. DWG'S: 2H52-56439		H:\2H52\BBLB-065D	
						DRAWN BY: DT		DATE: 8/8/2023	CHK'D: QJB
						SCALE: 2:3		INTERPRET PER ASME Y14.5-2009	FILE: 2H52
						SIZE: B		DWG. NO.	BBLB-065D
								REV.	-