
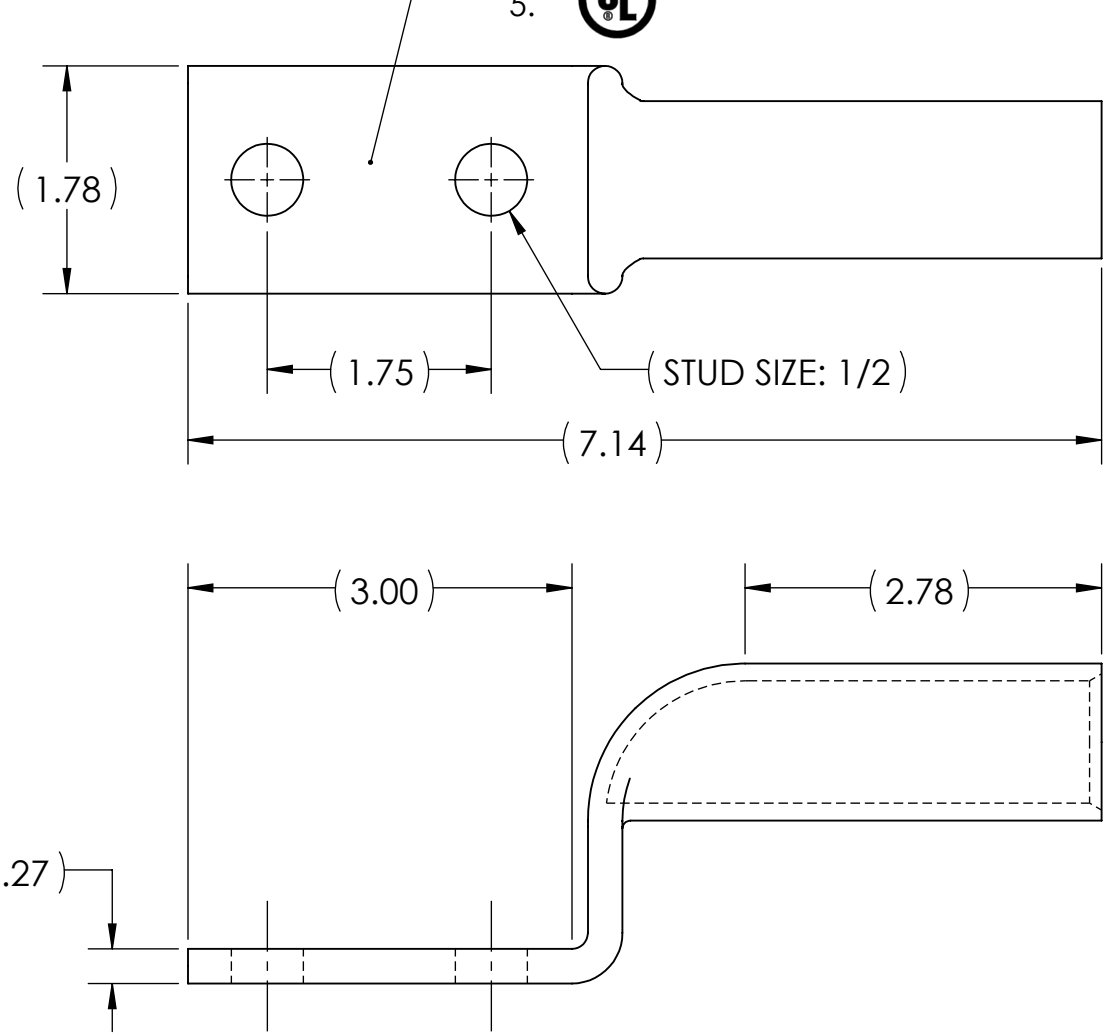
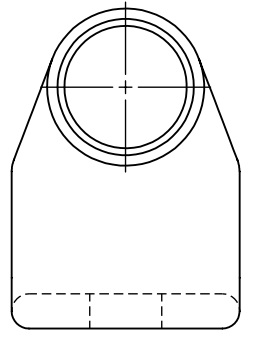
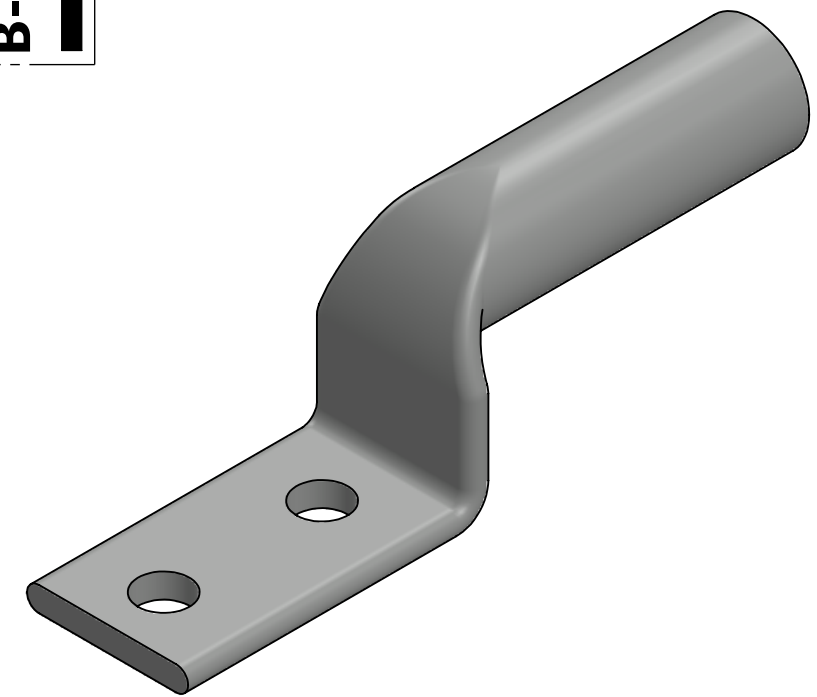
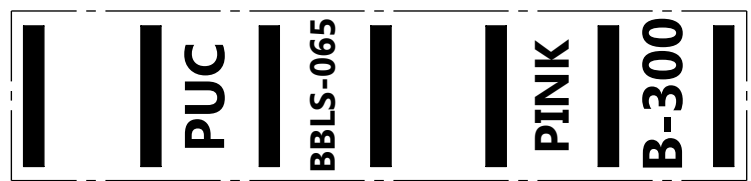


METAL STAMP TO READ:

1. 650
2. CU
3. D
4. 12
5. 



INK STAMP REFERENCE



NOTES:

1. ALL DIMENSIONS IN INCHES UNLESS OTHERWISE SPECIFIED
2. SEE INSTALLATION SHEET FOR WIRE SIZE AND TOOLING RECOMMENDATIONS
3. TIN-PLATED TO INHIBIT CORROSION
4. RATED FOR COPPER CONDUCTORS ONLY
5. BEVELED ENTRY FOR EASY CABLE INSERTION
6. CONNECTORS ARE SUITABLE FOR VOLTAGES UP TO 35 KV
7. FOR APPLICATIONS GREATER THAN 2000 VOLTS, CONSULT CABLE MANUFACTURER FOR VOLTAGE STRESS RELIEF INSTRUCTIONS
8. CONNECTORS ARE UL LISTED PER UL486A-B FOR POWER APPLICATIONS UP TO 90°C
9. CONNECTORS ARE DESIGNED FOR USE WITH CORRESPONDING BBLS SERIES LUGS
10. APPROXIMATE WEIGHT: 1.225 LBS



NO.	ECN	DATE
1	12238	3/17/2023
REVISIONS		

			X		COPPER TUBING					
		QTY.		PT.	NAME OR DESCRIPTION					
					STACKING LUG					
					for 650 MCM COPPER CONDUCTORS					
					REF. DWG'S: 2H51-56423		H:\2H51\BBLS-065D			
					DRAWN BY: DT		DATE: 8/10/2023		CHK'D: QJB	
					SCALE: 2:3		INTERPRET PER ASME Y14.5-2009		FILE: 2H51	
						SIZE: B			DWG. NO.	REV.
									BBLS-065D	1

BBLS-065D
CAT. NO.

