
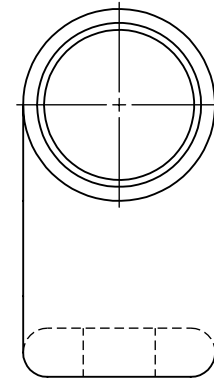
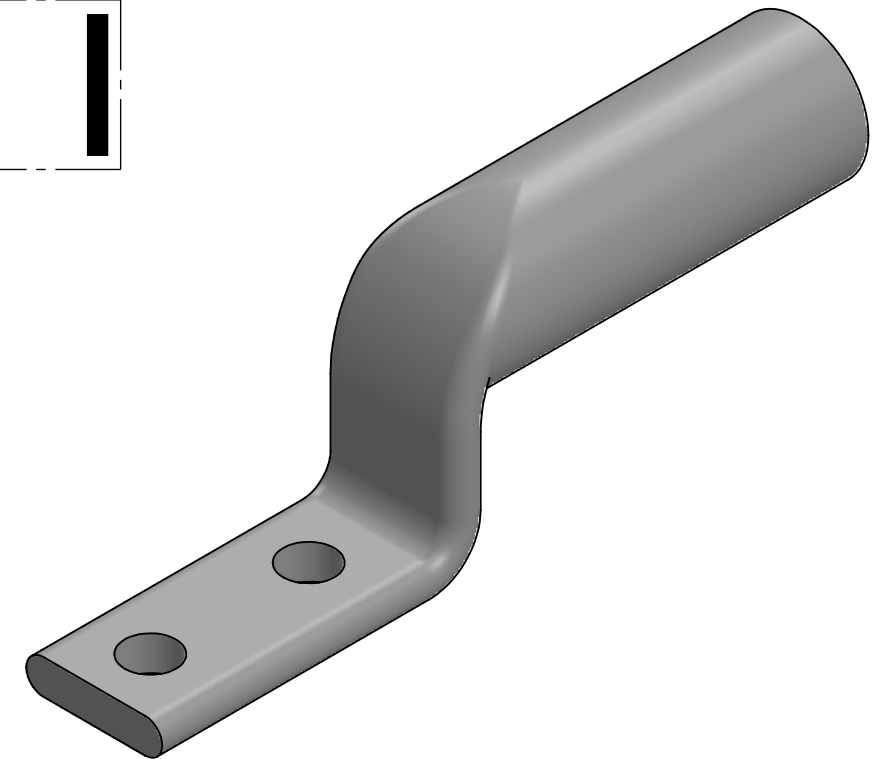
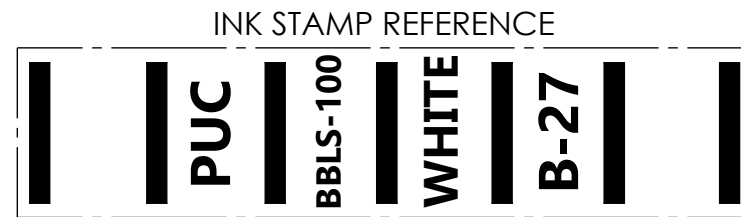
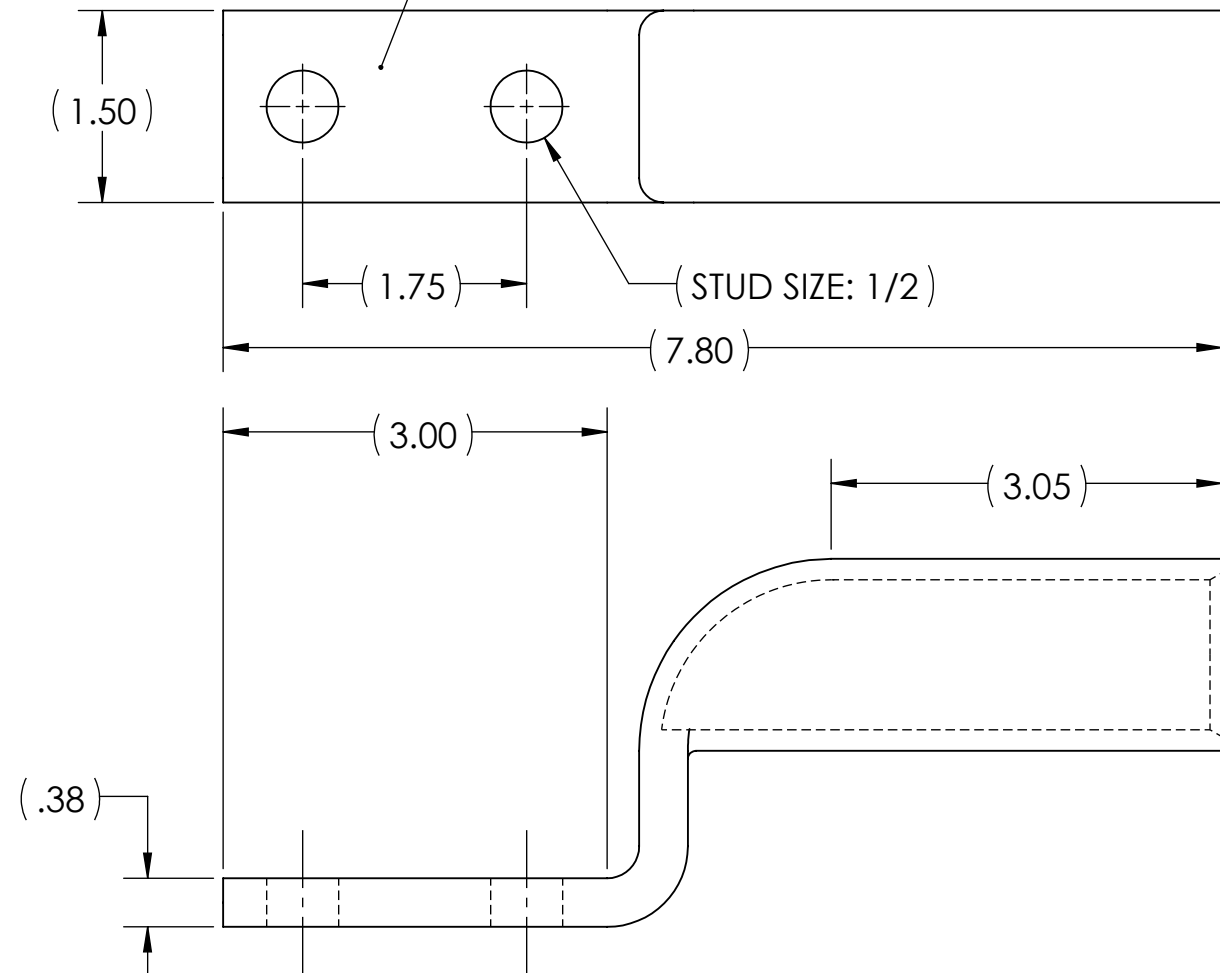


METAL STAMP TO READ:

- 1. 1000
- 2. CU
- 3. D
- 4. 12
- 5. 



NOTES:

- 1. ALL DIMENSIONS IN INCHES UNLESS OTHERWISE SPECIFIED
- 2. SEE INSTALLATION SHEET FOR WIRE SIZE AND TOOLING RECOMMENDATIONS
- 3. TIN-PLATED TO INHIBIT CORROSION
- 4. RATED FOR COPPER CONDUCTORS ONLY
- 5. BEVELED ENTRY FOR EASY CABLE INSERTION
- 6. CONNECTORS ARE SUITABLE FOR VOLTAGES UP TO 35 KV
- 7. FOR APPLICATIONS GREATER THAN 2000 VOLTS, CONSULT CABLE MANUFACTURER FOR VOLTAGE STRESS RELIEF INSTRUCTIONS
- 8. CONNECTORS ARE cULus LISTED PER UL486A-B FOR POWER APPLICATIONS UP TO 90°C
- 9. CONNECTORS ARE DESIGNED FOR USE WITH CORRESPONDING BBLS SERIES LUGS
- 10. APPROXIMATE WEIGHT: 1.734 LBS



NO.	ECN	DATE
REVISIONS		

		X		COPPER TUBING
QTY.	PT.	NAME OR DESCRIPTION		
		STACKING LUG for 1000 MCM COPPER CONDUCTORS		
		REF. DWG'S: 2H51-56425		H:\2H51\BBLS-100D-NT
		DRAWN BY: DT		DATE: 8/10/2023
		SCALE: 2:3		CHK'D: QJB
		SIZE: B		INTERPRET PER ASME Y14.5-2009
		DWG. NO. BBLS-100D-NT		FILE: 2H51
				REV. -