



DWG. NO. **BBLU-025D** REV. **-**

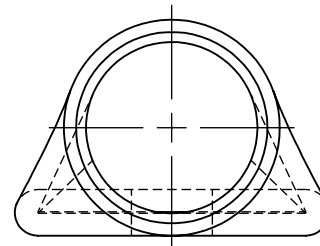
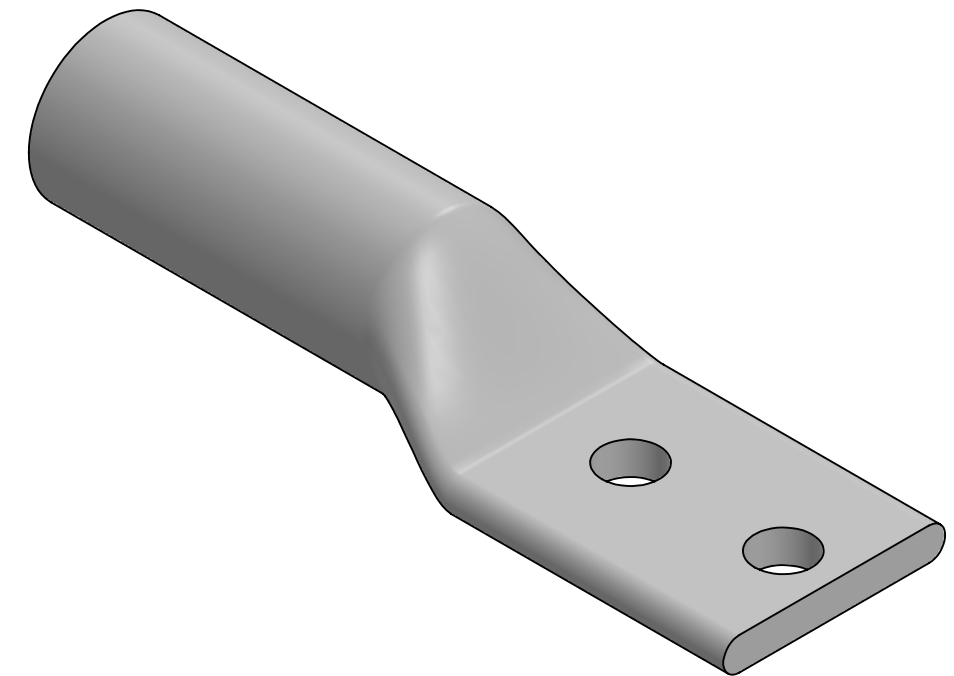
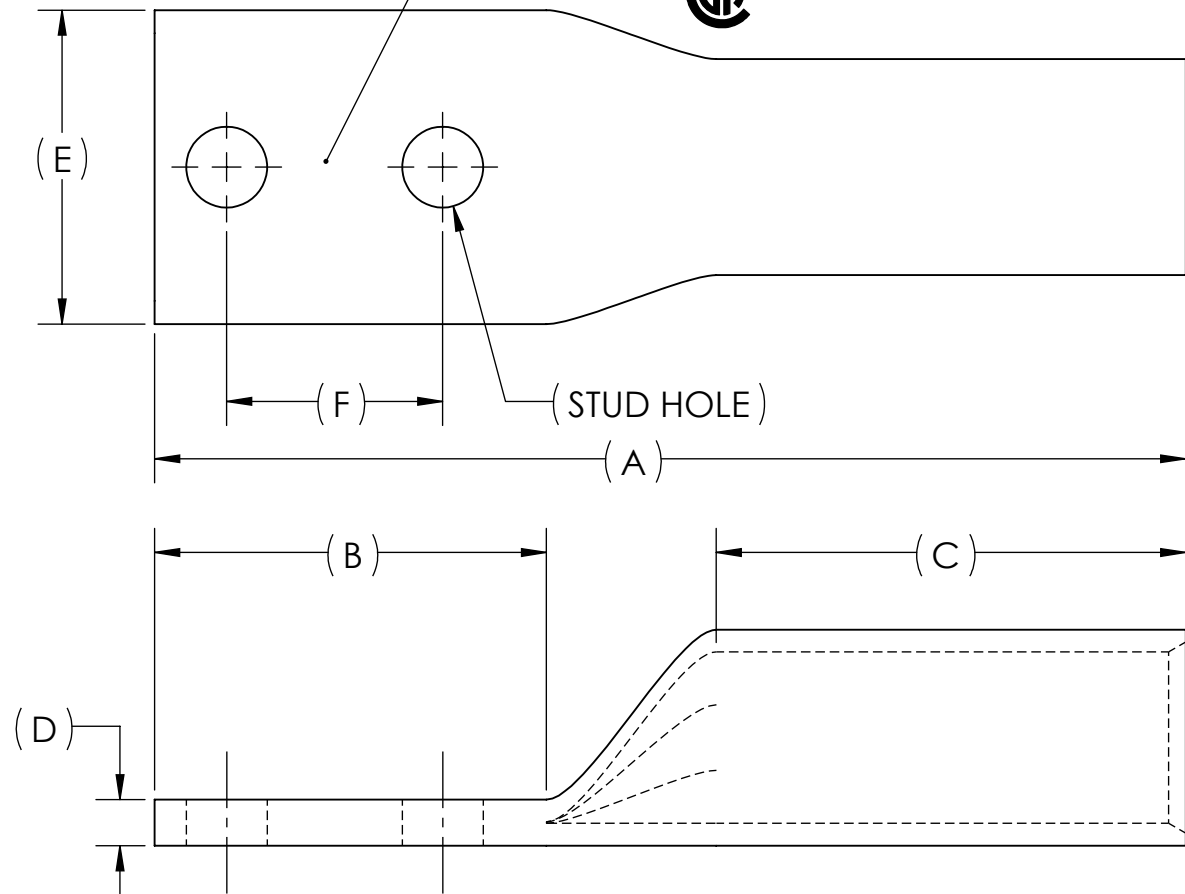
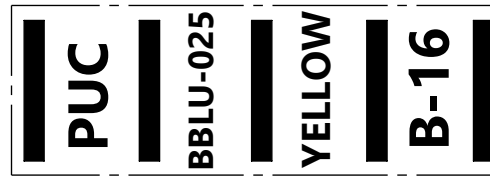
REV.	CAT. NO.	SUFFIX	STUD HOLE	DIMENSIONS						APPROX. WEIGHT (LB)	STRIP LENGTH
				A	B	C	D	E	F		
01	BBLU-025D2TC14E2	2TC14E2	1/4	3.58	1.36	1.63	.16	1.09	.75	0.182	1.75
01	BBLU-025D2TC38E3	2TC38E3	3/8	4.05	1.83	1.63	.16	1.09	.81	0.201	
02	BBLU-025D2TC38	2TC38	3/8	4.05	1.83	1.63	.16	1.09	1.00	0.201	
10	BBLU-025D	-	1/2	5.13	3.00	1.63	.16	1.09	1.75	0.247	

METAL STAMP TO READ:

1. 250
2. CU
3. D
4. "SUFFIX"
5. DB
6. 
7. 

USE BELOW OPTIONAL SUFFIXES FOR ALTERNATE LUG CONFIGURATIONS:  
 -45 FOR 45° BENT PAD  
 -90 FOR 90° BENT PAD  
 -FL FOR FLARED BARREL ENTRY  
 -U FOR UNDRILLED PAD  
 EXAMPLE: BBLU-025D2TC14E2-FL

INK STAMP REFERENCE



NOTES:

1. ALL DIMENSIONS IN INCHES UNLESS OTHERWISE SPECIFIED
2. SEE INSTALLATION SHEET FOR WIRE SIZE AND TOOLING RECOMMENDATIONS
3. TIN-PLATED TO INHIBIT CORROSION
4. RATED FOR COPPER CONDUCTORS ONLY
5. BEVELED ENTRY FOR EASY CABLE INSERTION
6. CONNECTORS ARE SUITABLE FOR VOLTAGES UP TO 35 KV
7. FOR APPLICATIONS GREATER THAN 2000 VOLTS, CONSULT CABLE MANUFACTURER FOR VOLTAGE STRESS RELIEF INSTRUCTIONS
8. CONNECTORS ARE UL LISTED PER UL486A-B AND CSA CERTIFIED PER C22.2 NO.65 FOR POWER APPLICATIONS UP TO 90°C
9. CONNECTORS ARE UL LISTED FOR GROUNDING, BONDING, AND DIRECT BURIAL APPLICATIONS PER UL467
10. CONNECTORS ARE CSA CERTIFIED FOR GROUNDING, BONDING, AND DIRECT BURIAL APPLICATIONS PER C22.2 NO.41



NO.	ECN	DATE
REVISIONS		

QTY.	PT.	NAME OR DESCRIPTION
	X	COPPER TUBING
		<b>PENN-CRIMP LUG</b> for 250 MCM COPPER CONDUCTORS
REF. DWG'S: 2H08-55064, 2H08-55065, 2H08-54982, 2H08-31547		H:\2H08\BBLU-025D
DRAWN BY: DT		DATE: 2/22/2023
SCALE: 3:2		CHK'D: QJB
INTERPRET PER ASME Y14.5-2009		FILE: 2H08
SIZE: B	DWG. NO. <b>BBLU-025D</b>	REV. <b>-</b>
SEE TABLE		CAT. NO. <b>PENNUNION</b> 229 WATERFORD STREET EDINBORO, PA 16412 USA