

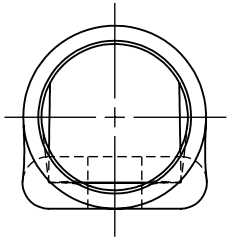
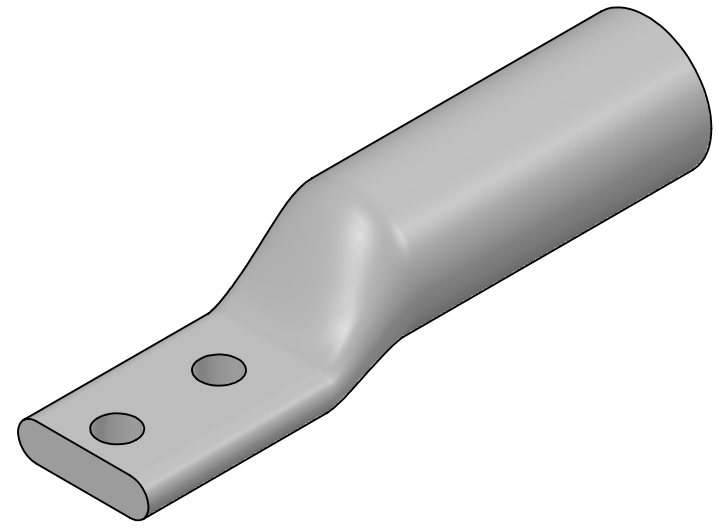
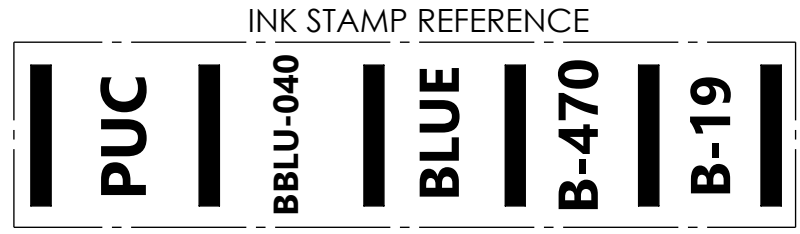
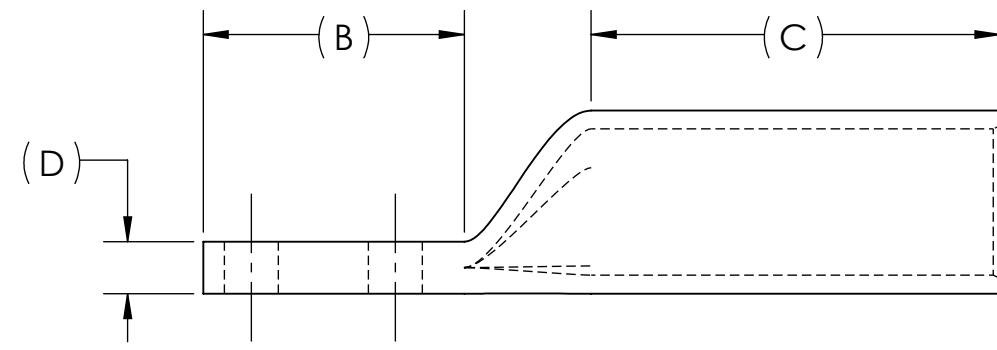
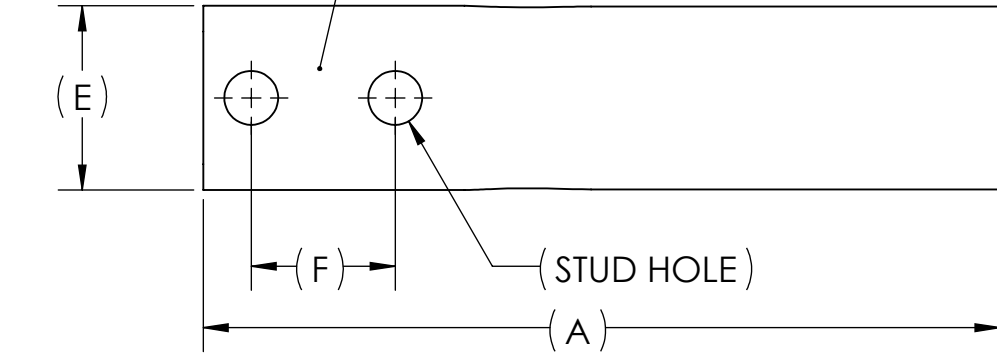


DWG. NO. **BBLU-040D-NT** REV. **-**

CAT. NO.	SUFFIX	STUD HOLE	DIMENSIONS						APPROX. WEIGHT (LB)	STRIP LENGTH
			A	B	C	D	E	F		
BBLU-040D-2TC14E2-NT	2TC14E2	1/4	4.15	1.36	2.13	.27	.96	.75	0.329	2.25
BBLU-040D-2TC38-NT	2TC38	3/8	4.62	1.83	2.13	.27	.96	1.00	0.355	

- METAL STAMP TO READ:
- 400
 - CU
 - D-NT
 - "SUFFIX"
 - 313 KCMIL 775/24
 - DB
 - 
 - 


USE BELOW OPTIONAL SUFFIXES FOR ALTERNATE LUG CONFIGURATIONS:
 -45 FOR 45° BENT PAD
 -90 FOR 90° BENT PAD
 -FL FOR FLARED BARREL ENTRY
 -U FOR UNDRILLED PAD
 EXAMPLE: BBLU-040D-2TC14E2-NT-FL



- NOTES:
- ALL DIMENSIONS IN INCHES UNLESS OTHERWISE SPECIFIED
 - SEE INSTALLATION SHEET FOR WIRE SIZE AND TOOLING RECOMMENDATIONS
 - TIN-PLATED TO INHIBIT CORROSION
 - RATED FOR COPPER CONDUCTORS ONLY
 - BEVELED ENTRY FOR EASY CABLE INSERTION
 - CONNECTORS ARE SUITABLE FOR VOLTAGES UP TO 35 KV
 - FOR APPLICATIONS GREATER THAN 2000 VOLTS, CONSULT CABLE MANUFACTURER FOR VOLTAGE STRESS RELIEF INSTRUCTIONS
 - CONNECTORS ARE UL LISTED PER UL486A-B AND CSA CERTIFIED PER C22.2 NO.65 FOR POWER APPLICATIONS UP TO 90°C
 - CONNECTORS ARE UL LISTED FOR GROUNDING, BONDING, AND DIRECT BURIAL APPLICATIONS PER UL467



NO.	ECN	DATE
REVISIONS		

			X						COPPER TUBING	
		QTY.	PT.	NAME OR DESCRIPTION						
				LONG BARREL NARROW TONGUE LUG for 400 MCM COPPER CONDUCTORS						
				REF. DWG'S: 2H08-56129			H:\2H08\BBLU-040D-NT			
				DRAWN BY: DT		DATE: 7/17/2023		CHK'D: QJB		
				SCALE: 1:1		INTERPRET PER ASME Y14.5-2009		FILE: 2H08		
				SIZE: B	DWG. NO. BBLU-040D-NT		REV. -			
				SEE TABLE						
				CAT. NO.						
				 229 WATERFORD STREET EDINBORO, PA 16412 USA						