



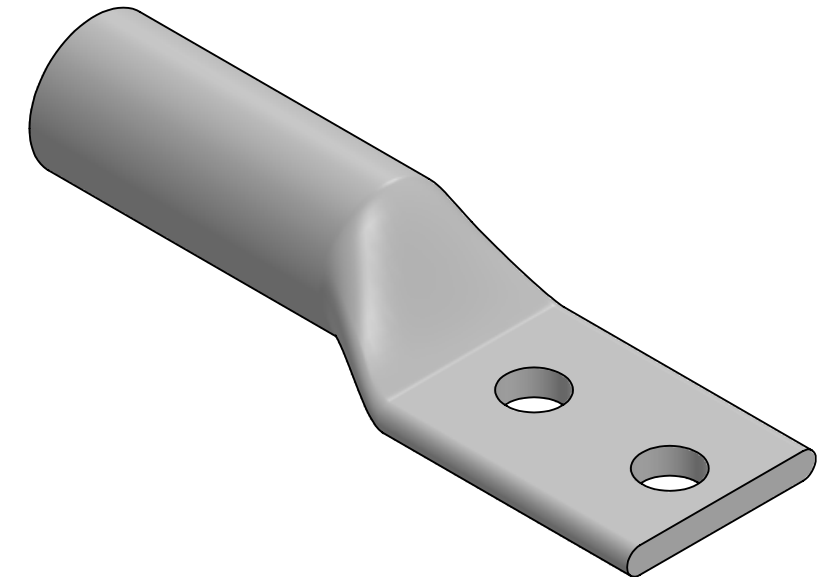
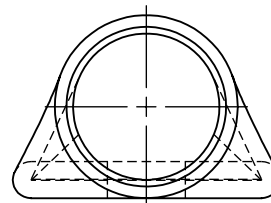
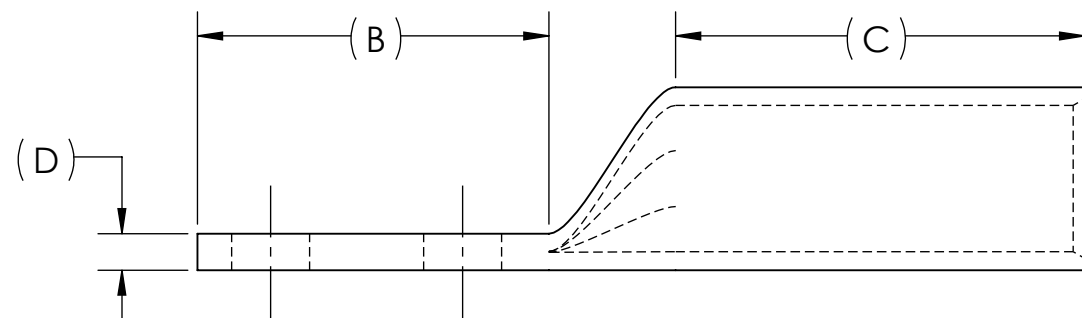
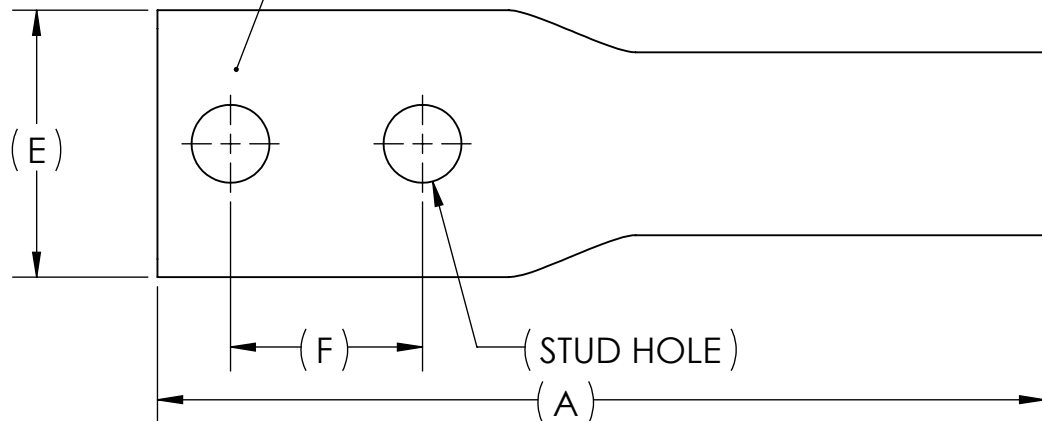
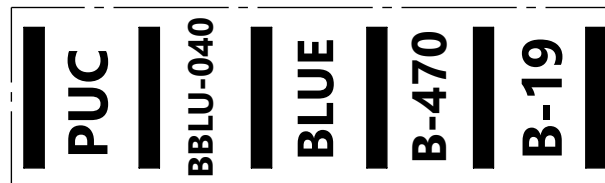
DWG. NO.	BBLU-040D	REV.				DIMENSIONS					APPROX. WEIGHT (LB)	STRIP LENGTH	
			-										
		REV.	CAT. NO.	SUFFIX	STUD HOLE	A	B	C	D	E	F		
		01	BBLU-040D2TC14E2	2TC14E2	1/4	4.15	1.36	2.13	.19	1.39	.75	0.331	2.25
02	BBLU-040D2TC38	2TC38E3	3/8	4.62	1.83	2.13	.19	1.39	1.00	0.362			
09	BBLU-040D	-	1/2	5.79	3.00	2.13	.19	1.39	1.75	0.447			

METAL STAMP TO READ:

1. 400
2. CU
3. D
4. "SUFFIX"
5. DB
6. 
7. 

USE BELOW OPTIONAL SUFFIXES FOR ALTERNATE LUG CONFIGURATIONS:
 -45 FOR 45° BENT PAD
 -90 FOR 90° BENT PAD
 -FL FOR FLARED BARREL ENTRY
 -U FOR UNDRILLED PAD
 EXAMPLE: BBLU-040D2TC14E2-FL

INK STAMP REFERENCE

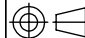


NOTES:

1. ALL DIMENSIONS IN INCHES UNLESS OTHERWISE SPECIFIED
2. SEE INSTALLATION SHEET FOR WIRE SIZE AND TOOLING RECOMMENDATIONS
3. TIN-PLATED TO INHIBIT CORROSION
4. RATED FOR COPPER CONDUCTORS ONLY
5. BEVELED ENTRY FOR EASY CABLE INSERTION
6. CONNECTORS ARE SUITABLE FOR VOLTAGES UP TO 35 KV
7. FOR APPLICATIONS GREATER THAN 2000 VOLTS, CONSULT CABLE MANUFACTURER FOR VOLTAGE STRESS RELIEF INSTRUCTIONS
8. CONNECTORS ARE UL LISTED PER UL486A-B AND CSA CERTIFIED PER C22.2 NO.65 FOR POWER APPLICATIONS UP TO 90°C
9. CONNECTORS ARE UL LISTED FOR GROUNDING, BONDING, AND DIRECT BURIAL APPLICATIONS PER UL467



NO.	ECN	DATE
REVISIONS		

				X	COPPER TUBING										
					QTY.	PT.	NAME OR DESCRIPTION								
					PENN-CRIMP LUG for 400 MCM COPPER CONDUCTORS										
					REF. DWG'S: 2H08-55068, 2H08-54985, 2H08-32547					H:\2H08\BBLU-040D					
					DRAWN BY: DT		DATE: 2/22/2023		CHK'D: QJB						
					SCALE: 1:1		INTERPRET PER ASME Y14.5-2009			FILE: 2H08					
					SIZE: B			DWG. NO.	BBLU-040D			REV.			
					229 WATERFORD STREET EDINBORO, PA 16412 USA							-			