



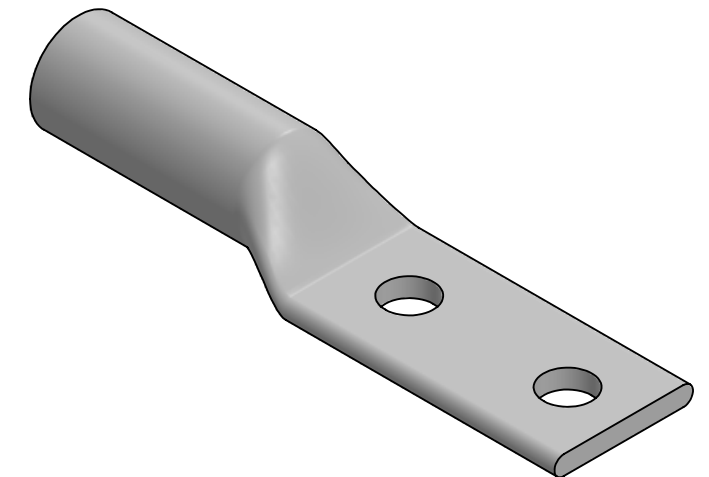
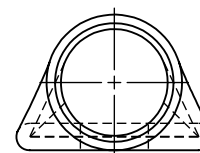
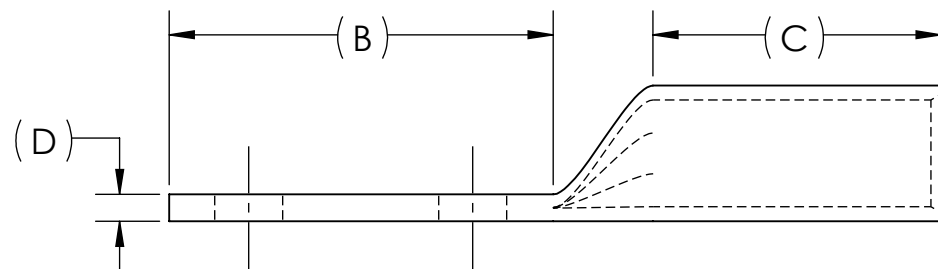
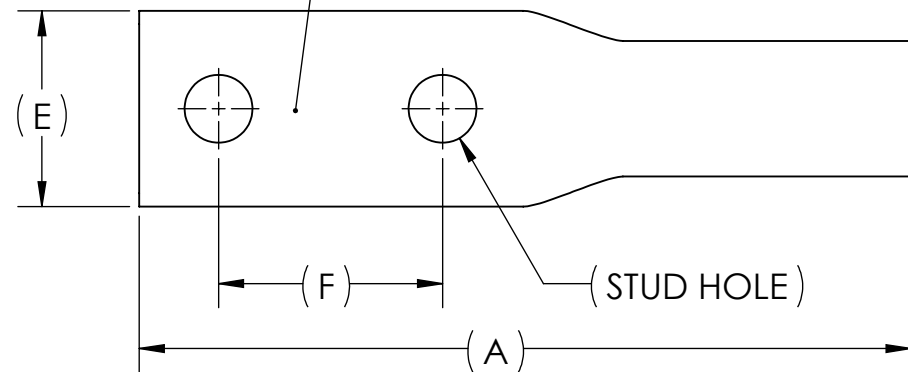
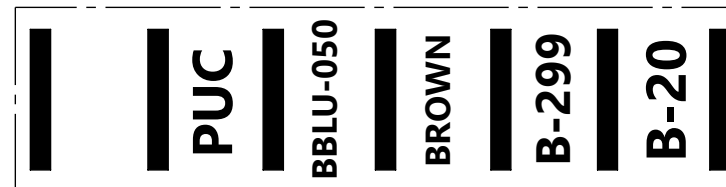
DWG. NO.	BBLU-050D	REV. -	REV.	CAT. NO.	SUFFIX	STUD HOLE	DIMENSIONS						APPROX. WEIGHT (LB)	STRIP LENGTH	
			A	B	C	D	E	F							
			01	BBLU-050D2TC14E2	2TC14E2	1/4	4.39	1.36	2.25	.21	1.53	.75			0.446
			02	BBLU-050D2TC38	2TC38	3/8	4.86	1.83	2.25	.21	1.53	1.00			0.484
14	BBLU-050D	-	1/2	6.03	3.00	2.25	.21	1.53	1.75	0.589	2.38				

METAL STAMP TO READ:

- 1. 500
- 2. CU
- 3. D
- 4. "SUFFIX"
- 5. DB
- 6. 
- 7. 

USE BELOW OPTIONAL SUFFIXES FOR ALTERNATE LUG CONFIGURATIONS:
 -45 FOR 45° BENT PAD
 -90 FOR 90° BENT PAD
 -FL FOR FLARED BARREL ENTRY
 -U FOR UNDRILLED PAD
 EXAMPLE: BBLU-050D2TC14E2-FL

INK STAMP REFERENCE




NOTES:

- ALL DIMENSIONS IN INCHES UNLESS OTHERWISE SPECIFIED
- SEE INSTALLATION SHEET FOR WIRE SIZE AND TOOLING RECOMMENDATIONS
- TIN-PLATED TO INHIBIT CORROSION
- RATED FOR COPPER CONDUCTORS ONLY
- BEVELED ENTRY FOR EASY CABLE INSERTION
- CONNECTORS ARE SUITABLE FOR VOLTAGES UP TO 35 KV
- FOR APPLICATIONS GREATER THAN 2000 VOLTS, CONSULT CABLE MANUFACTURER FOR VOLTAGE STRESS RELIEF INSTRUCTIONS
- CONNECTORS ARE UL LISTED PER UL486A-B AND CSA CERTIFIED PER C22.2 NO.65 FOR POWER APPLICATIONS UP TO 90°C
- CONNECTORS ARE UL LISTED FOR GROUNDING, BONDING, AND DIRECT BURIAL APPLICATIONS PER UL467



NO.	ECN	DATE
REVISIONS		

				X		COPPER TUBING							
				QTY.	PT.	NAME OR DESCRIPTION							
						PENN-CRIMP LUG							
						for							
						500 MCM COPPER CONDUCTORS							
						REF. DWG'S: 2H08-55069, 2H08-54986, 2H08-31549						H:\2H08\BBLU-050D	
								DRAWN BY: DT		DATE: 2/22/2023		CHK'D: QJB	
						229 WATERFORD STREET		SCALE: 2:3		INTERPRET PER ASME Y14.5-2009		FILE: 2H08	
						EDINBORO, PA 16412 USA		SIZE: B		DWG. NO.		BBLU-050D	
								REV.				-	