

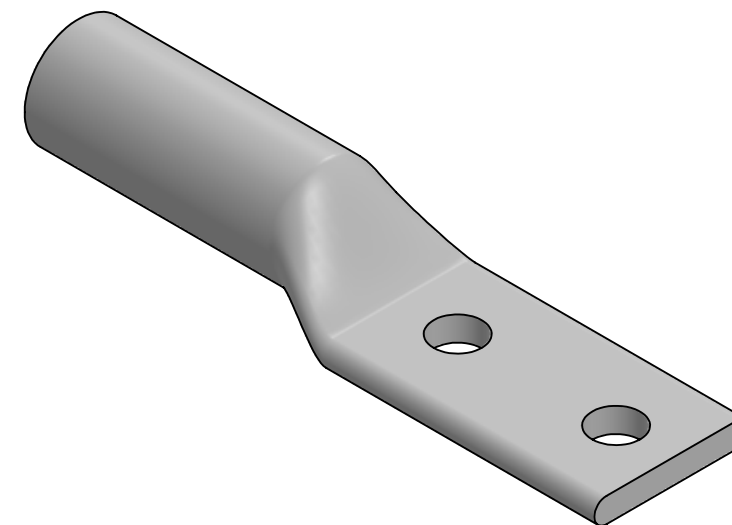
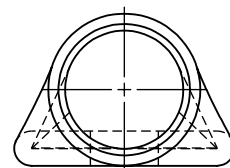
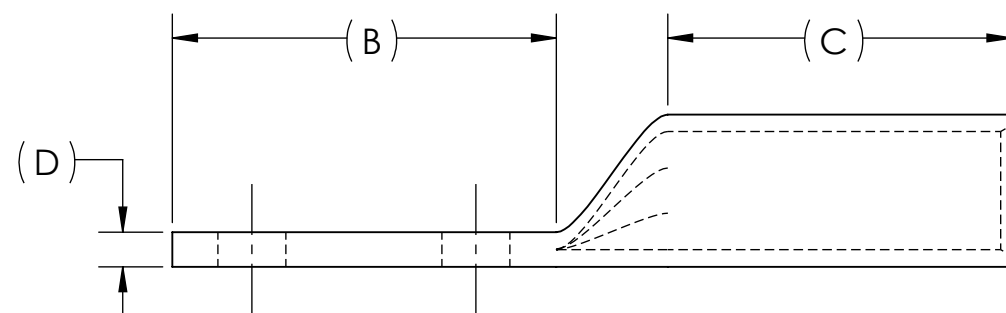
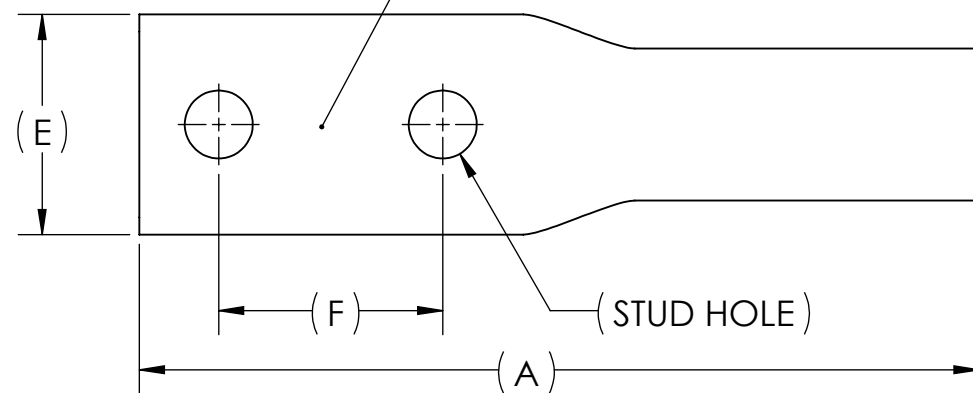
DWG. NO.	<b>BBLU-060D</b>	REV.	-	REV.	CAT. NO.	SUFFIX	STUD HOLE	DIMENSIONS						APPROX. WEIGHT (LB)	STRIP LENGTH
								A	B	C	D	E	F		
								01	BBLU-060D2TC38	2TC38	3/8	5.39	1.83		
11	BBLU-060D	-	1/2	6.56	3.00	2.69	.27	1.72	1.75	0.889	2.81				

USE BELOW OPTIONAL SUFFIXES FOR ALTERNATE LUG CONFIGURATIONS:  
 -45 FOR 45° BENT PAD  
 -90 FOR 90° BENT PAD  
 -FL FOR FLARED BARREL ENTRY  
 -U FOR UNDRILLED PAD  
 EXAMPLE: BBLU-060D2TC38-FL

METAL STAMP TO READ:

1. 600
2. CU
3. D
4. "SUFFIX"
- 5.
- 6.

INK STAMP REFERENCE



NOTES:

1. ALL DIMENSIONS IN INCHES UNLESS OTHERWISE SPECIFIED
2. SEE INSTALLATION SHEET FOR WIRE SIZE AND TOOLING RECOMMENDATIONS
3. TIN-PLATED TO INHIBIT CORROSION
4. RATED FOR COPPER CONDUCTORS ONLY
5. BEVELED ENTRY FOR EASY CABLE INSERTION
6. CONNECTORS ARE SUITABLE FOR VOLTAGES UP TO 35 KV
7. FOR APPLICATIONS GREATER THAN 2000 VOLTS, CONSULT CABLE MANUFACTURER FOR VOLTAGE STRESS RELIEF INSTRUCTIONS
8. CONNECTORS ARE UL LISTED PER UL486A-B AND CSA CERTIFIED PER C22.2 NO.65 FOR POWER APPLICATIONS UP TO 90°C



NO.	ECN	DATE
REVISIONS		

X	COPPER TUBING	
QTY.	PT.	NAME OR DESCRIPTION
		<b>PENN-CRIMP LUG</b> for 600 MCM COPPER CONDUCTORS
REF. DWG'S: 2H08-54987, 2H08-32757		H:\2H08\BBLU-060D
DRAWN BY: DT		DATE: 2/22/2023
SCALE: 2:3		CHK'D: <b>QJB</b>
INTERPRET PER ASME Y14.5-2009		FILE: 2H08
SIZE: B	DWG. NO.	REV.
	<b>BBLU-060D</b>	-

