



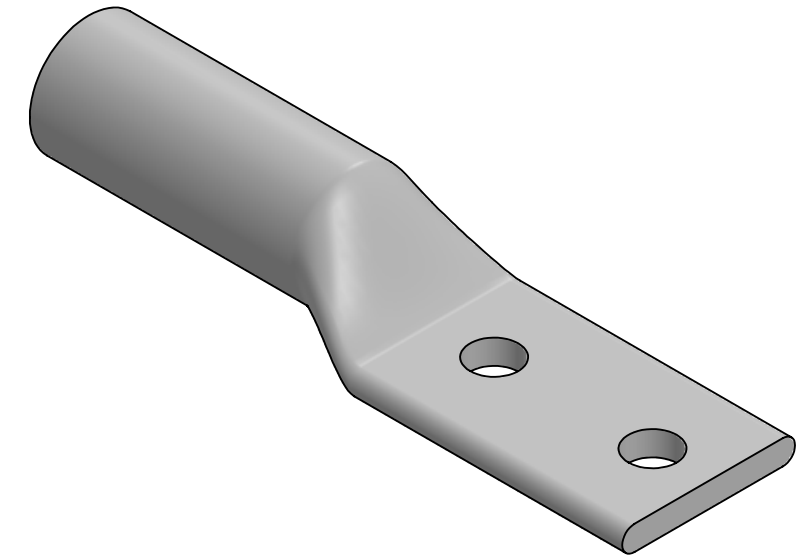
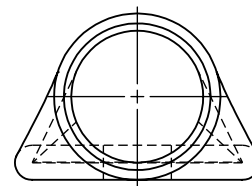
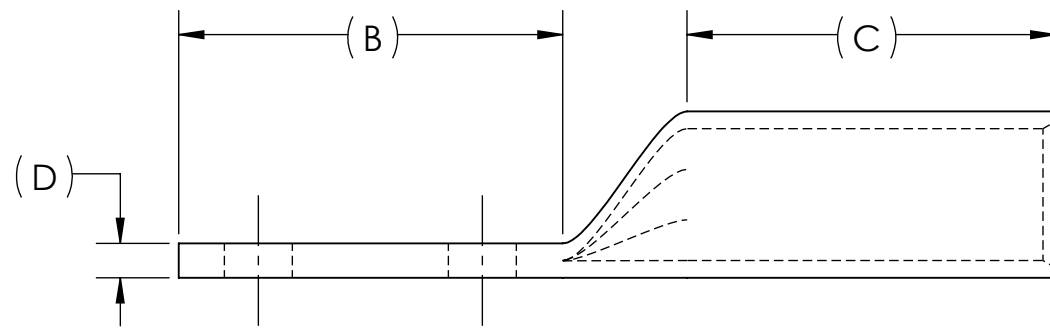
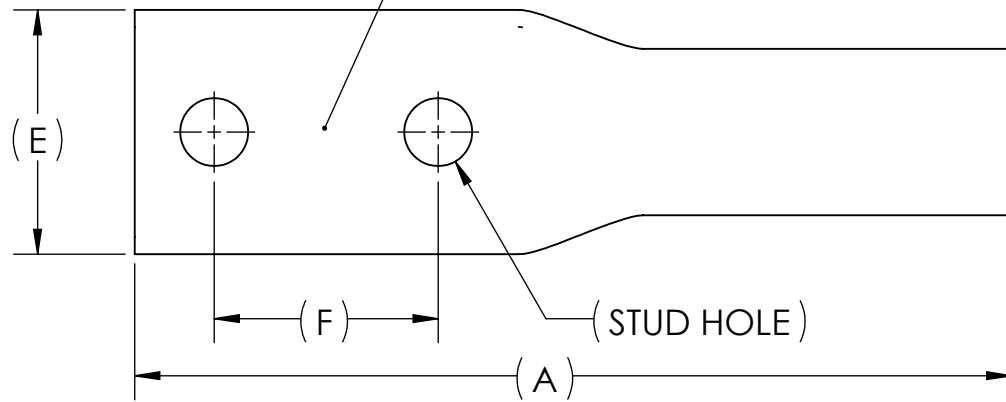
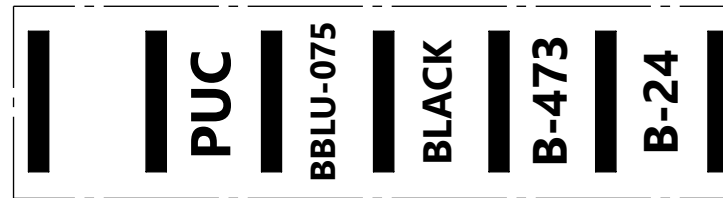
DWG. NO.	BBLU-075D	REV.	-	REV.	CAT. NO.	SUFFIX	STUD HOLE	DIMENSIONS						APPROX. WEIGHT (LB)	STRIP LENGTH
								A	B	C	D	E	F		
								-	BBLU-075D2TC38	2TC38	3/8	5.93	2.08		
14	BBLU-075D	-	1/2	6.85	3.00	2.88	.27	1.91	1.75	1.045	3.00				

USE BELOW OPTIONAL SUFFIXES FOR ALTERNATE LUG CONFIGURATIONS:
 -45 FOR 45° BENT PAD
 -90 FOR 90° BENT PAD
 -FL FOR FLARED BARREL ENTRY
 -U FOR UNDRILLED PAD
 EXAMPLE: BBLU-075D2TC38-FL

METAL STAMP TO READ:

1. 750
2. CU
3. D
4. "SUFFIX"
5. 
6. 

INK STAMP REFERENCE



NOTES:

1. ALL DIMENSIONS IN INCHES UNLESS OTHERWISE SPECIFIED
2. SEE INSTALLATION SHEET FOR WIRE SIZE AND TOOLING RECOMMENDATIONS
3. TIN-PLATED TO INHIBIT CORROSION
4. RATED FOR COPPER CONDUCTORS ONLY
5. BEVELED ENTRY FOR EASY CABLE INSERTION
6. CONNECTORS ARE SUITABLE FOR VOLTAGES UP TO 35 KV
7. FOR APPLICATIONS GREATER THAN 2000 VOLTS, CONSULT CABLE MANUFACTURER FOR VOLTAGE STRESS RELIEF INSTRUCTIONS
8. CONNECTORS ARE UL LISTED PER UL486A-B AND CSA CERTIFIED PER C22.2 NO.65 FOR POWER APPLICATIONS UP TO 90°C



NO.	ECN	DATE
REVISIONS		

			X						COPPER TUBING	
			QTY.						PT.	
			NAME OR DESCRIPTION							
			PENN-CRIMP LUG							
			for							
			750 MCM COPPER CONDUCTORS							
			REF. DWG'S: 2H08-55070, 2H08-31550				H:\2H08\BBLU-075D			
			DRAWN BY: DT		DATE: 2/22/2023		CHK'D: QJB			
			SCALE: 2:3		INTERPRET PER ASME Y14.5-2009			FILE: 2H08		
			SIZE: B							
			DWG. NO.	BBLU-075D					REV.	-
			SEE TABLE							
			CAT. NO.							
			PENNUNION™							
			229 WATERFORD STREET							
			EDINBORO, PA 16412 USA							