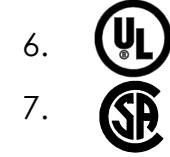


DWG. NO. **BBLU-075S-NT** REV. -

CAT. NO.	SUFFIX	STUD HOLE	DIMENSIONS					APPROX. WEIGHT (LB)	STRIP LENGTH
			A	B	C	D	E		
BBLU-075S3-NT	S3-NT	3/8	5.47	1.75	2.88	.32	1.30	0.795	3.00
BBLU-075S2-NT	S2-NT	1/2	5.47	1.75	2.88	.32	1.30	0.786	
BBLU-075S-NT	S-NT	5/8	5.47	1.75	2.88	.32	1.30	0.774	

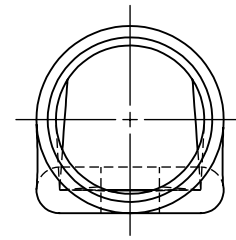
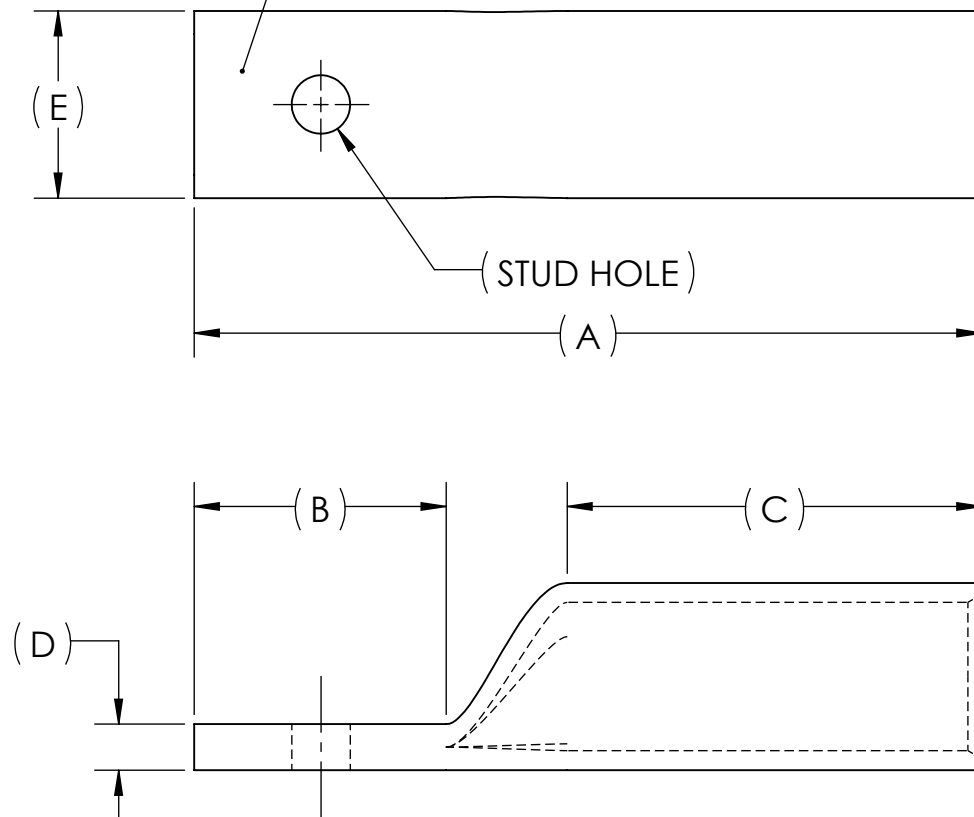
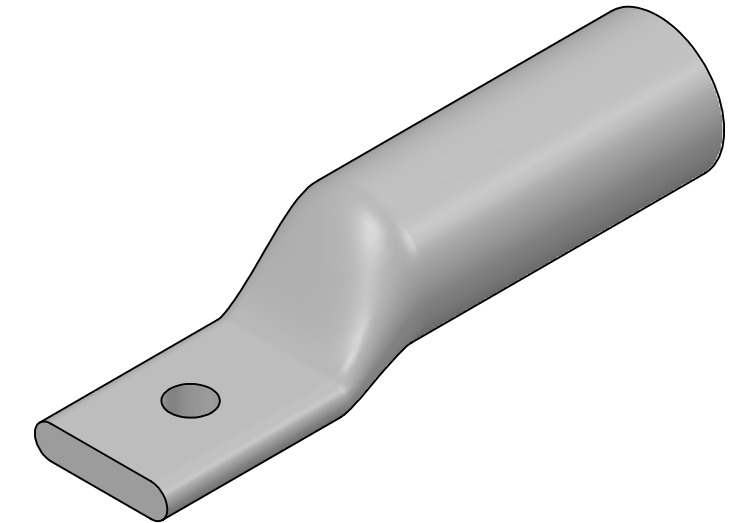
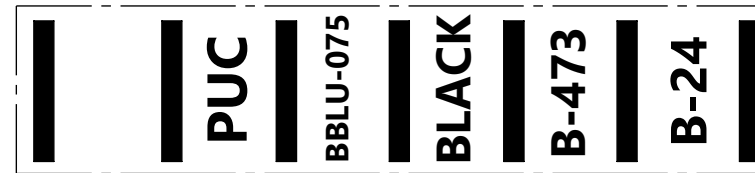
METAL STAMP TO READ:

- 750
- CU
- "SUFFIX"
- "STUD HOLE"
- 646 KCMIL 1600/24



USE BELOW OPTIONAL SUFFIXES FOR ALTERNATE LUG CONFIGURATIONS:
 -45 FOR 45° BENT PAD
 -90 FOR 90° BENT PAD
 -FL FOR FLARED BARREL ENTRY
 -U FOR UNDRILLED PAD
 EXAMPLE: BBLU-075S2-NT-FL

INK STAMP REFERENCE



NOTES:

- ALL DIMENSIONS IN INCHES UNLESS OTHERWISE SPECIFIED
- SEE INSTALLATION SHEET FOR WIRE SIZE AND TOOLING RECOMMENDATIONS
- TIN-PLATED TO INHIBIT CORROSION
- RATED FOR COPPER CONDUCTORS ONLY
- BEVELED ENTRY FOR EASY CABLE INSERTION
- CONNECTORS ARE SUITABLE FOR VOLTAGES UP TO 35 KV
- FOR APPLICATIONS GREATER THAN 2000 VOLTS, CONSULT CABLE MANUFACTURER FOR VOLTAGE STRESS RELIEF INSTRUCTIONS
- CONNECTORS ARE UL LISTED PER UL486A-B AND CSA CERTIFIED PER C22.2 NO.65 FOR POWER APPLICATIONS UP TO 90°C



NO.	ECN	DATE
REVISIONS		

QTY.	PT.	NAME OR DESCRIPTION
	X	COPPER TUBING
		PENN-CRIMP LUG for 750 MCM COPPER CONDUCTORS
REF. DWG'S: 5H08-96571		H:\5H08\BBLU-075S-NT
DRAWN BY: DT		DATE: 7/13/2023
SCALE: 3:4		INTERPRET PER ASME Y14.5-2009
SIZE: B		FILE: 5H08
DWG. NO. BBLU-075S-NT		REV. -

