

DWG. NO. **BBLU-3/0D-NT** REV. -

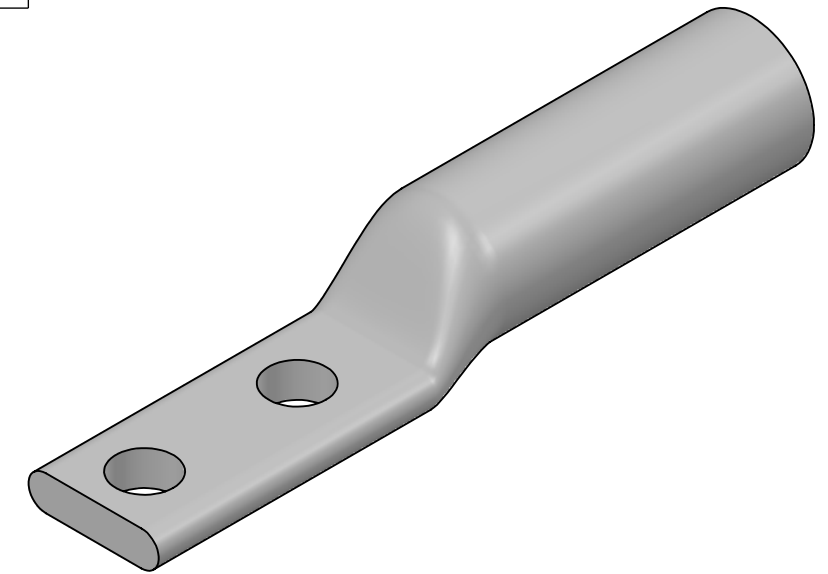
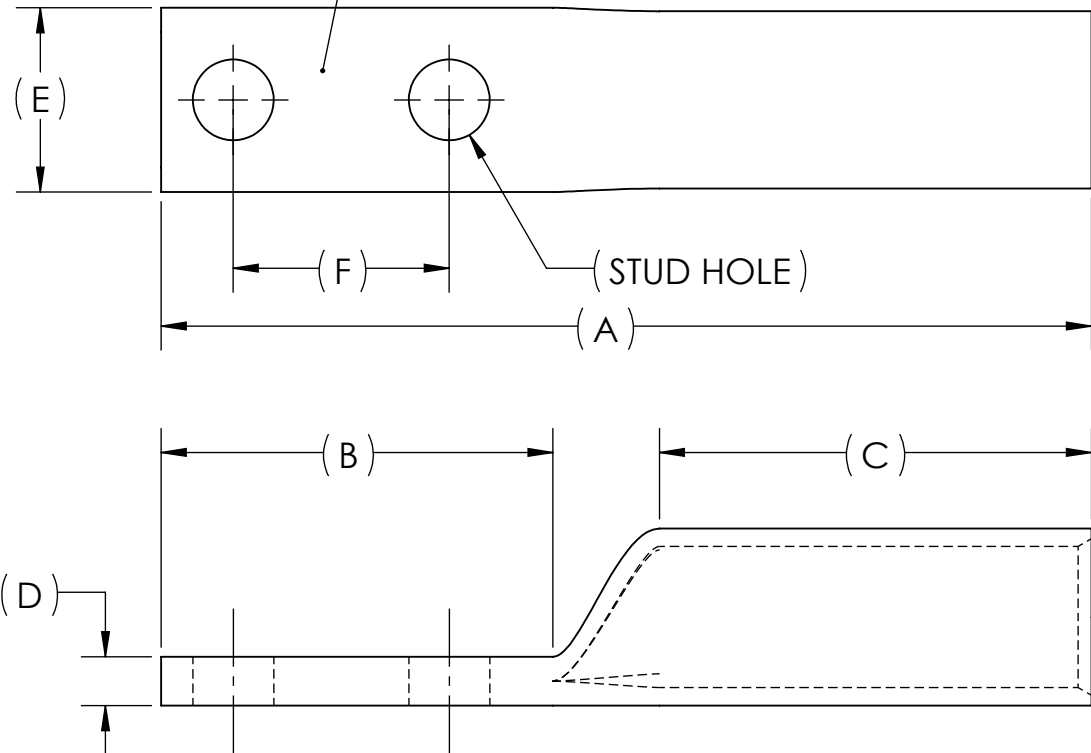
CAT. NO.	SUFFIX	STUD HOLE	DIMENSIONS						APPROX. WEIGHT (LB)	STRIP LENGTH
			A	B	C	D	E	F		
BBLU-3/0D-2TC14E2-NT	2TC14E2	1/4	3.23	1.36	1.50	.17	.64	.75	0.104	1.63
BBLU-3/0D-2TC38-NT	2TC38	3/8	3.70	1.83	1.50	.17	.64	1.00	0.112	

METAL STAMP TO READ:

- 3/0
- CU
- D-NT
- "SUFFIX"
- DB
- 
- 

USE BELOW OPTIONAL SUFFIXES FOR ALTERNATE LUG CONFIGURATIONS:
 -45 FOR 45° BENT PAD
 -90 FOR 90° BENT PAD
 -FL FOR FLARED BARREL ENTRY
 -U FOR UNDRILLED PAD
 EXAMPLE: BBLU-3/0D-2TC14E2-NT-FL

INK STAMP REFERENCE



NOTES:

- ALL DIMENSIONS IN INCHES UNLESS OTHERWISE SPECIFIED
- SEE INSTALLATION SHEET FOR WIRE SIZE AND TOOLING RECOMMENDATIONS
- TIN-PLATED TO INHIBIT CORROSION
- RATED FOR COPPER CONDUCTORS ONLY
- BEVELED ENTRY FOR EASY CABLE INSERTION
- CONNECTORS ARE SUITABLE FOR VOLTAGES UP TO 35 KV
- FOR APPLICATIONS GREATER THAN 2000 VOLTS, CONSULT CABLE MANUFACTURER FOR VOLTAGE STRESS RELIEF INSTRUCTIONS
- CONNECTORS ARE UL LISTED PER UL486A-B AND CSA CERTIFIED PER C22.2 NO.65 FOR POWER APPLICATIONS UP TO 90°C
- CONNECTORS ARE UL LISTED FOR GROUNDING, BONDING, AND DIRECT BURIAL APPLICATIONS PER UL467
- CONNECTORS ARE CSA CERTIFIED FOR GROUNDING, BONDING, AND DIRECT BURIAL APPLICATIONS PER C22.2 NO.41



NO.	ECN	DATE
REVISIONS		

QTY.	PT.	NAME OR DESCRIPTION
X		COPPER TUBING
		LONG BARREL NARROW TONGUE LUG for 3/0 AWG COPPER CONDUCTORS
REF. DWG'S: 2H08-56151		H:\2H08\BBLU-3.0D-NT
DRAWN BY: DT DATE: 7/14/2023 CHK'D: QJB		SCALE: 3:2 INTERPRET PER ASME Y14.5-2009 FILE: 2H08
SEE TABLE	CAT. NO.	DWG. NO. BBLU-3/0D-NT
		REVISIONS