
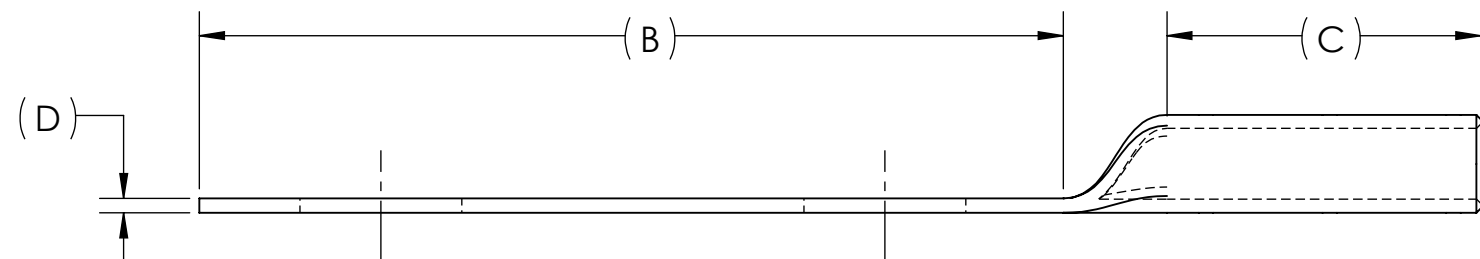
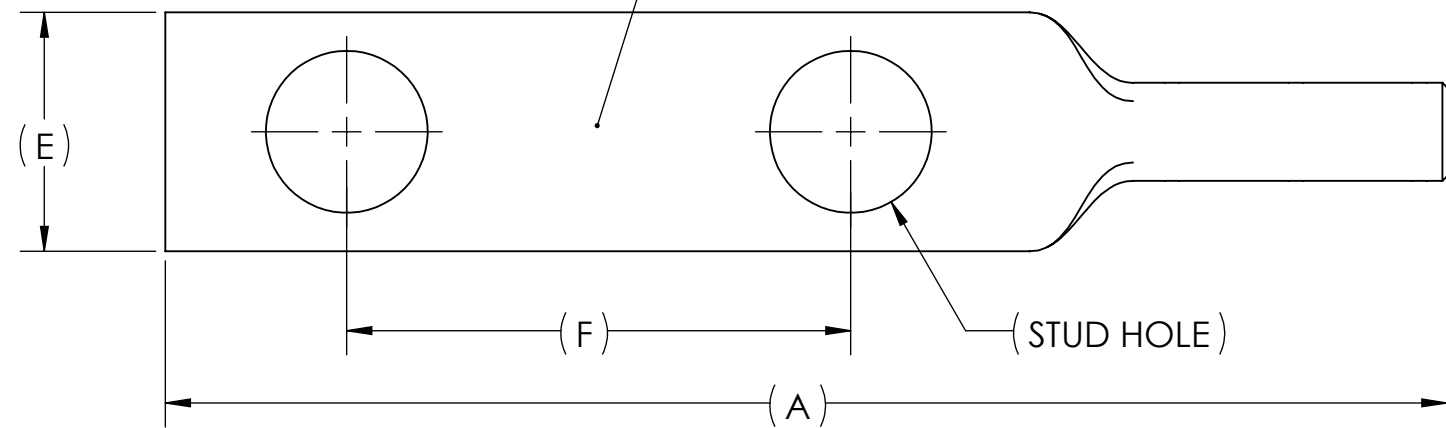


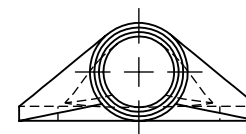
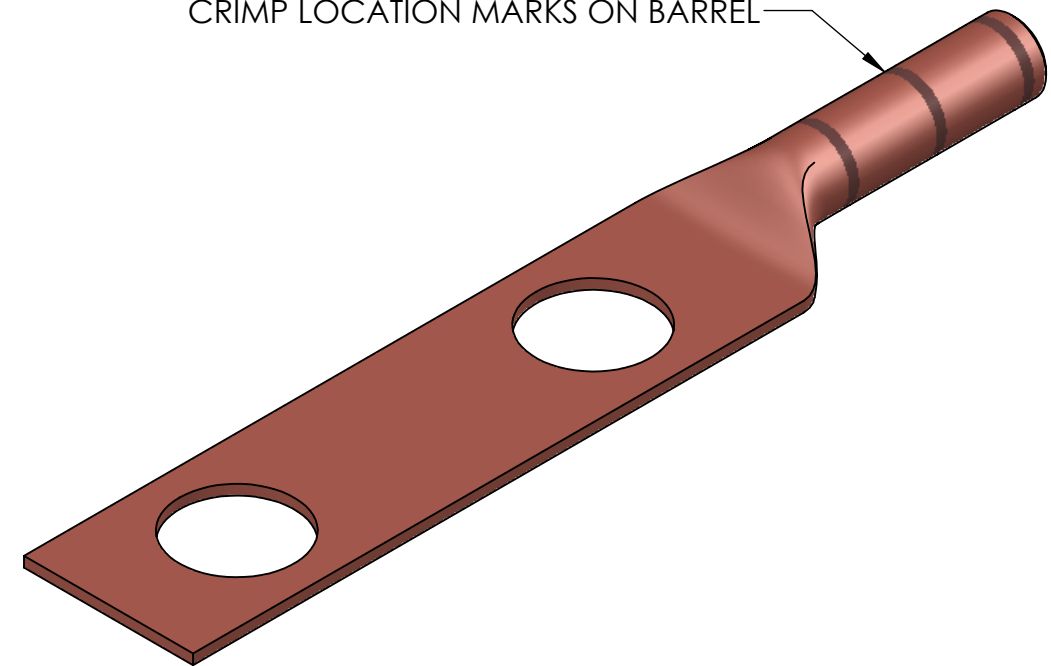
REV.	CAT. NO.	STUD HOLE	DIMENSIONS						APPROX. WEIGHT (LB)	STRIP LENGTH
			A	B	C	D	E	F		
01	BBLU-4D-GND	1/2	4.45	3.00	1.09	.05	.83	1.75	0.054	1.19

METAL STAMP TO READ:

- PENN-UNION
- 4 AWG
- "CAT. NO."
- DB
- DIE 8
- 



CRIMP LOCATION MARKS ON BARREL



NOTES:

- ALL DIMENSIONS IN INCHES UNLESS OTHERWISE SPECIFIED
- SEE INSTALLATION SHEET FOR WIRE SIZE AND TOOLING RECOMMENDATIONS
- RATED FOR COPPER CONDUCTORS ONLY
- BEVELED ENTRY FOR EASY CABLE INSERTION
- PREFILLED WITH COPPER-BASED OXIDE INHIBITOR AND CAPPED TO PREVENT FOREIGN MATERIALS FROM ENTERING AND CONTAMINATING CONNECTORS PRIOR TO USE
- CONNECTORS ARE SUITABLE FOR VOLTAGES UP TO 35 KV
- FOR APPLICATIONS GREATER THAN 2000 VOLTS, CONSULT CABLE MANUFACTURER FOR VOLTAGE STRESS RELIEF INSTRUCTIONS
- CONNECTORS ARE cULus LISTED PER UL486A-B FOR POWER APPLICATIONS UP TO 90°C
- CONNECTORS ARE UL LISTED FOR GROUNDING, BONDING, AND DIRECT BURIAL APPLICATIONS PER UL467

NO.	ECN	DATE
REVISIONS		

QTY.	PT.	NAME OR DESCRIPTION
	X	COPPER TUBING
		COMPRESSION GROUNDING LUG for 4 STR. COPPER CONDUCTORS
REF. DWG'S: 5H08-96698		H:\5H08\BBLU-4D-GND
DRAWN BY: DT		DATE: 8/17/2023
SCALE: 3:2		INTERPRET PER ASME Y14.5-2009
FILE: 5H08		CHK'D: QJB
SEE TABLE	CAT. NO.	DWG. NO. <b>BBLU-4D-GND</b>
PENNUNION™ 229 WATERFORD STREET EDINBORO, PA 16412 USA		REV. <b>-</b>