



DWG. NO. **BBLU-8D** REV. -

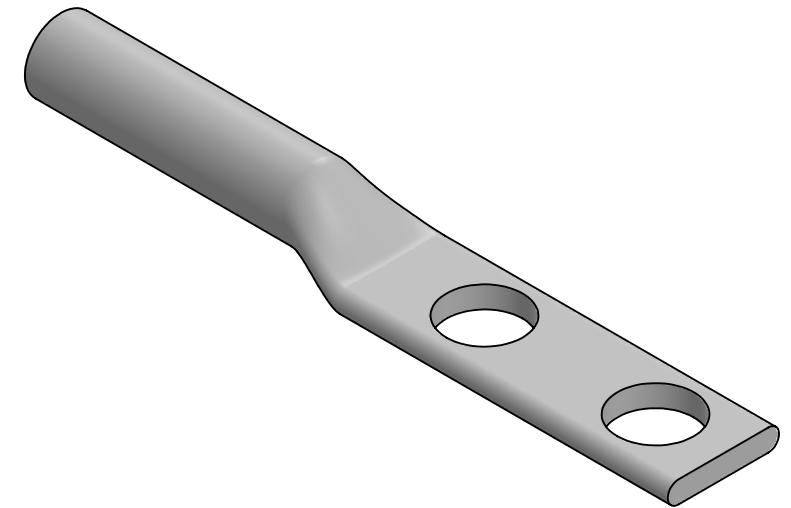
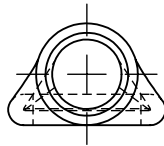
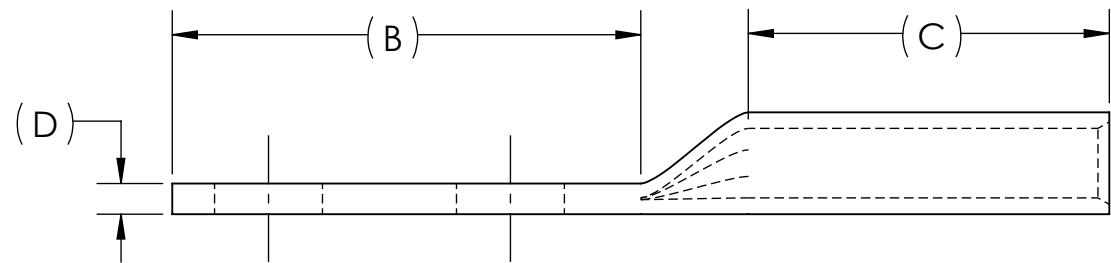
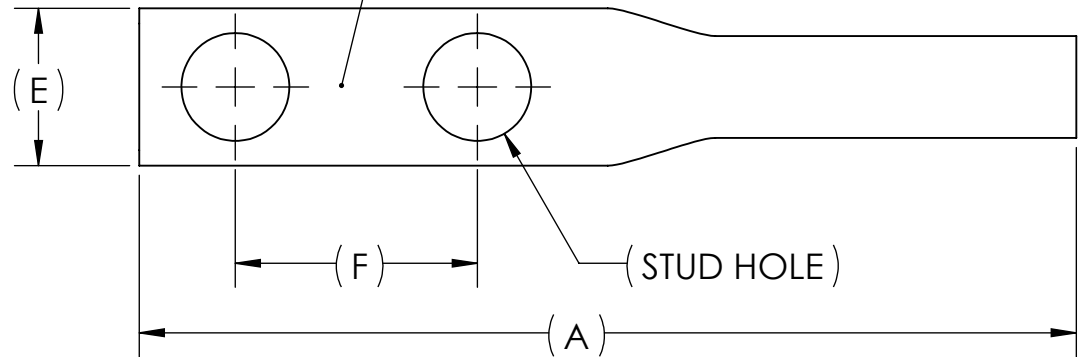
REV.	CAT. NO.	SUFFIX	STUD HOLE	DIMENSIONS						APPROX. WEIGHT (LB)	STRIP LENGTH
				A	B	C	D	E	F		
02	BBLU-8D2TC14	2TC14	1/4	2.44	1.22	.94	.08	.41	.63	0.021	1.00
01	BBLU-8D2TC14E2	2TC14E2	1/4	2.58	1.36	.94	.08	.41	.75	0.022	
-	BBLU-8D2TC38E3	2TC38E3	3/8	3.05	1.83	.94	.06	.56	.81	0.026	
01	BBLU-8D2TC38	2TC38	3/8	3.05	1.83	.94	.06	.56	1.00	0.026	

METAL STAMP TO READ:

1. 8
2. CU
3. D
4. "SUFFIX"
5. DB
6. 
7. 

USE BELOW OPTIONAL SUFFIXES FOR ALTERNATE LUG CONFIGURATIONS:
 -45 FOR 45° BENT PAD
 -90 FOR 90° BENT PAD
 -FL FOR FLARED BARREL ENTRY
 -U FOR UNDRILLED PAD
 EXAMPLE: BBLU-8D2TC38E3-FL

INK STAMP REFERENCE



NOTES:

1. ALL DIMENSIONS IN INCHES UNLESS OTHERWISE SPECIFIED
2. SEE INSTALLATION SHEET FOR WIRE SIZE AND TOOLING RECOMMENDATIONS
3. TIN-PLATED TO INHIBIT CORROSION
4. RATED FOR COPPER CONDUCTORS ONLY
5. BEVELED ENTRY FOR EASY CABLE INSERTION
6. CONNECTORS ARE SUITABLE FOR VOLTAGES UP TO 35 KV
7. FOR APPLICATIONS GREATER THAN 2000 VOLTS, CONSULT CABLE MANUFACTURER FOR VOLTAGE STRESS RELIEF INSTRUCTIONS
8. CONNECTORS ARE UL LISTED PER UL486A-B AND CSA CERTIFIED PER C22.2 NO.65 FOR POWER APPLICATIONS UP TO 90°C
9. CONNECTORS ARE UL LISTED FOR GROUNDING, BONDING, AND DIRECT BURIAL APPLICATIONS PER UL467
10. CONNECTORS ARE CSA CERTIFIED FOR GROUNDING, BONDING, AND DIRECT BURIAL APPLICATIONS PER C22.2 NO.41



NO.	ECN	DATE
REVISIONS		

		X		COPPER TUBING			
QTY.	PT.	NAME OR DESCRIPTION					
		PENN-CRIMP LUG					
		for					
		8 AWG COPPER CONDUCTORS					
REF. DWG'S: 2H08-55010, 2H08-55028, 5H08-97764, 5H08-97765				H:\2H08\BBLU-8D			
DRAWN BY: DT		DATE: 2/22/2023		CHK'D: QJB			
SCALE: 2:1		INTERPRET PER ASME Y14.5-2009		FILE: 2H08			
SIZE: B		DWG. NO. BBLU-8D		REV. -			
SEE TABLE		CAT. NO.		PENNUNION™		229 WATERFORD STREET EDINBORO, PA 16412 USA	