



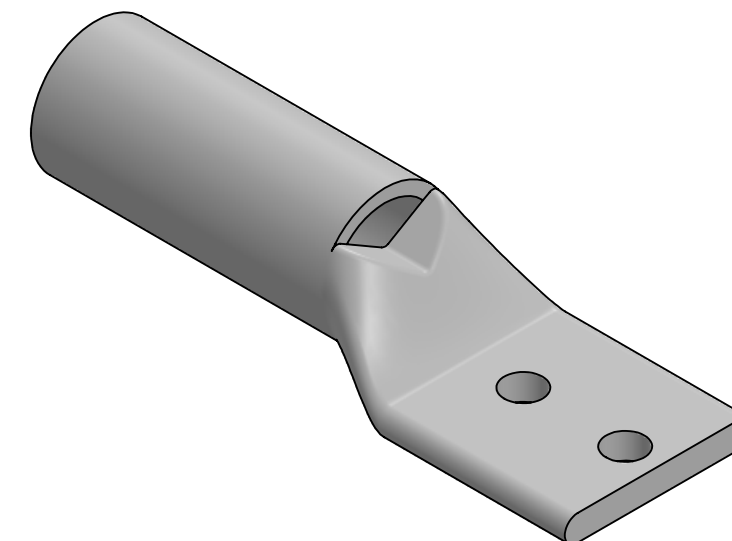
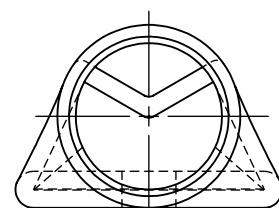
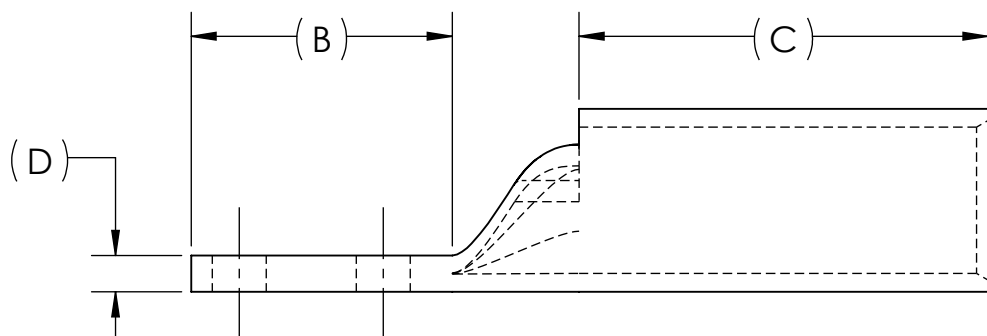
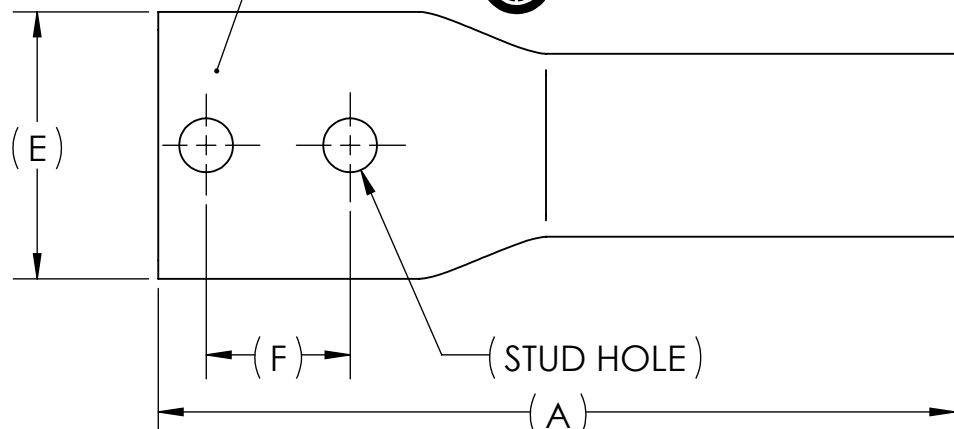
REV.	CAT. NO.	SUFFIX	STUD HOLE	DIMENSIONS						APPROX. WEIGHT (LB)	STRIP LENGTH
				A	B	C	D	E	F		
01	BBLZ-040D2TC14E2	2TC14E2	1/4	4.15	1.36	2.13	.19	1.39	.75	0.332	2.25
01	BBLZ-040D2TC38	2TC38	3/8	4.62	1.83	2.13	.19	1.39	1.00	0.362	
01	BBLZ-040D	-	1/2	5.79	3.00	2.13	.19	1.39	1.75	0.448	

METAL STAMP TO READ:

- 400
- CU
- D
- "SUFFIX"
- DB
- 
- 

USE BELOW OPTIONAL SUFFIXES FOR ALTERNATE LUG CONFIGURATIONS:
 -45 FOR 45° BENT PAD
 -90 FOR 90° BENT PAD
 -FL FOR FLARED BARREL ENTRY
 -U FOR UNDRILLED PAD
 EXAMPLE: BBLZ-040D2TC14E2-FL

INK STAMP REFERENCE



NOTES:

- ALL DIMENSIONS IN INCHES UNLESS OTHERWISE SPECIFIED
- SEE INSTALLATION SHEET FOR WIRE SIZE AND TOOLING RECOMMENDATIONS
- TIN-PLATED TO INHIBIT CORROSION
- RATED FOR COPPER CONDUCTORS ONLY
- BEVELED ENTRY FOR EASY CABLE INSERTION
- INSPECTION WINDOW TO ENSURE FULL CABLE INSERTION
- CONNECTORS ARE SUITABLE FOR VOLTAGES UP TO 35 KV
- FOR APPLICATIONS GREATER THAN 2000 VOLTS, CONSULT CABLE MANUFACTURER FOR VOLTAGE STRESS RELIEF INSTRUCTIONS
- CONNECTORS ARE UL LISTED PER UL486A-B AND CSA CERTIFIED PER C22.2 NO.65 FOR POWER APPLICATIONS UP TO 90°C
- CONNECTORS ARE UL LISTED FOR GROUNDING, BONDING, AND DIRECT BURIAL APPLICATIONS PER UL467



NO.	ECN	DATE
REVISIONS		

QTY.	PT.	NAME OR DESCRIPTION
	X	COPPER TUBING
		PENN-CRIMP LUG for 400 MCM COPPER CONDUCTORS
REF. DWG'S: 2H02-55191, 2H02-55192, 2H02-55193		H:\2H02\BBLZ-040D
DRAWN BY: DT		DATE: 6/9/2023
SCALE: 1:1		CHK'D: QJB
SIZE: B		INTERPRET PER ASME Y14.5-2009
DWG. NO. BBLZ-040D		FILE: 2H02
CAT. NO.		REV. -

PENNUNION
 229 WATERFORD STREET
 EDINBORO, PA 16412 USA