



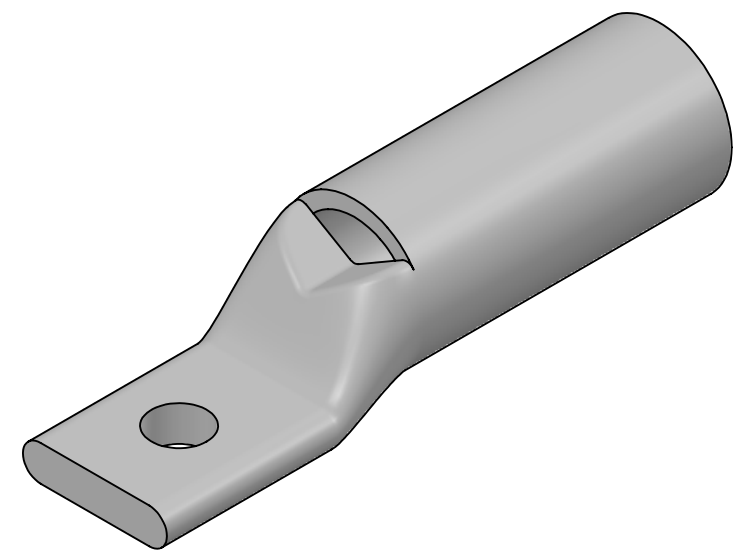
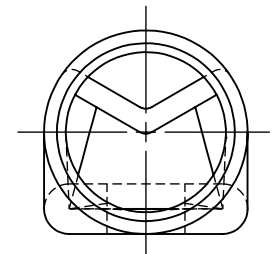
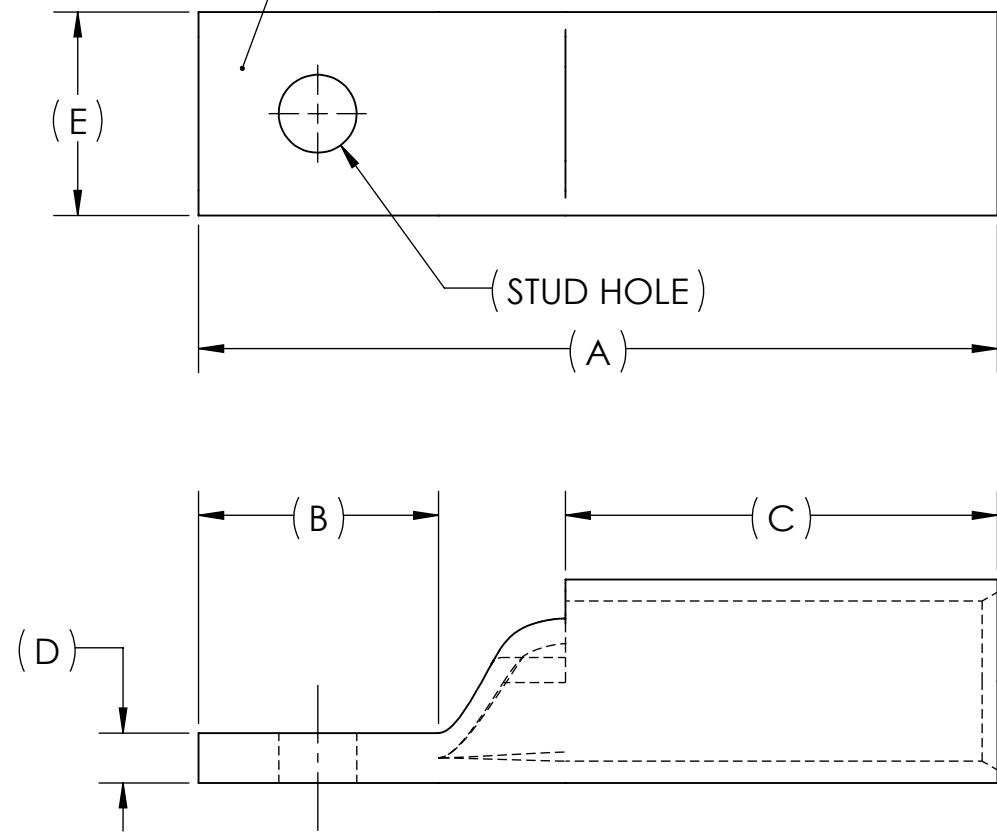
DWG. NO. **BBLZ-050S-NT** REV. -

CAT. NO.	SUFFIX	STUD HOLE	DIMENSIONS					APPROX. WEIGHT (LB)	STRIP LENGTH
			A	B	C	D	E		
BBLZ-050S3-NT	S3-NT	3/8	4.16	1.25	2.25	.26	1.06	0.404	2.38
BBLZ-050S2-NT	S2-NT	1/2	4.16	1.25	2.25	.26	1.06	0.397	

- METAL STAMP TO READ:
- 500
  - CU
  - "SUFFIX"
  - "STUD HOLE"
  - 373 KCMIL 925/24
  - DB
  - 
  - 

USE BELOW OPTIONAL SUFFIXES FOR ALTERNATE LUG CONFIGURATIONS:  
 -45 FOR 45° BENT PAD  
 -90 FOR 90° BENT PAD  
 -FL FOR FLARED BARREL ENTRY  
 -U FOR UNDRILLED PAD  
 EXAMPLE: BBLZ-050S3-NT-FL


INK STAMP REFERENCE



- NOTES:
- ALL DIMENSIONS IN INCHES UNLESS OTHERWISE SPECIFIED
  - SEE INSTALLATION SHEET FOR WIRE SIZE AND TOOLING RECOMMENDATIONS
  - TIN-PLATED TO INHIBIT CORROSION
  - RATED FOR COPPER CONDUCTORS ONLY
  - BEVELED ENTRY FOR EASY CABLE INSERTION
  - INSPECTION WINDOW TO ENSURE FULL CABLE INSERTION
  - CONNECTORS ARE SUITABLE FOR VOLTAGES UP TO 35 KV
  - FOR APPLICATIONS GREATER THAN 2000 VOLTS, CONSULT CABLE MANUFACTURER FOR VOLTAGE STRESS RELIEF INSTRUCTIONS
  - CONNECTORS ARE UL LISTED PER UL486A-B AND CSA CERTIFIED PER C22.2 NO.65 FOR POWER APPLICATIONS UP TO 90°C
  - CONNECTORS ARE UL LISTED FOR GROUNDING, BONDING, AND DIRECT BURIAL APPLICATIONS PER UL467



NO.	ECN	DATE
REVISIONS		

QTY.	PT.	NAME OR DESCRIPTION
	X	COPPER TUBING
		<b>LONG BARREL NARROW TONGUE LUG</b> for 500 MCM COPPER CONDUCTORS
REF. DWG'S: 5H02-96561		H:\5H02\BBLZ-050S-NT
DRAWN BY: DT		DATE: 7/18/2023
SCALE: 1:1		CHK'D: QJB
INTERPRET PER ASME Y14.5-2009		FILE: 5H02
SIZE: B	DWG. NO. <b>BBLZ-050S-NT</b>	REV. -
 229 WATERFORD STREET EDINBORO, PA 16412 USA		