



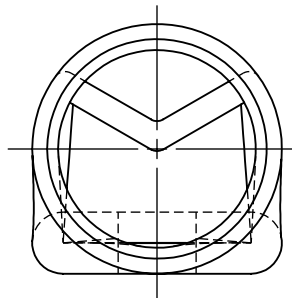
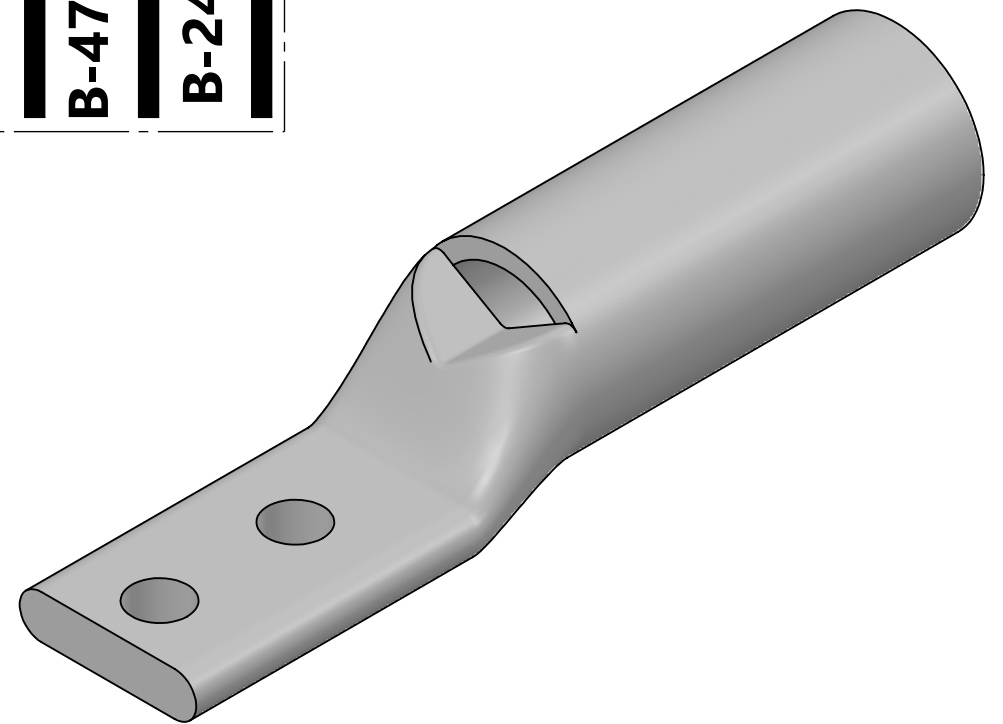
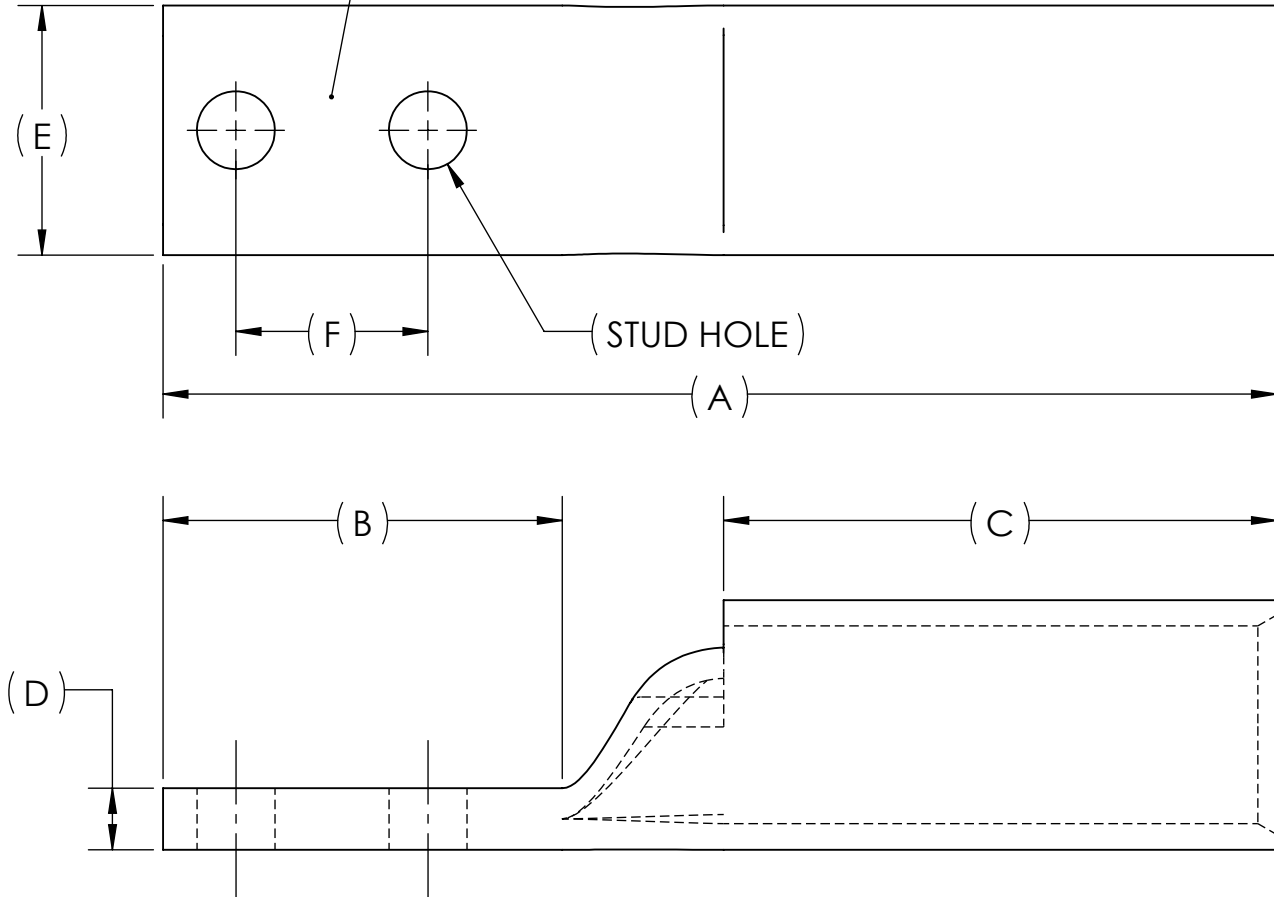
DWG. NO. BBLZ-075D-NT	REV. -	CAT. NO.	SUFFIX	STUD HOLE	DIMENSIONS						APPROX. WEIGHT (LB)	STRIP LENGTH
					A	B	C	D	E	F		
		BBLZ-075D-2TC38-NT	2TC38	3/8	5.80	2.08	2.88	.32	1.30	1.00	0.818	3.00
		BBLZ-075D-NT	-	1/2	6.72	3.00	2.88	.32	1.30	1.75	0.916	

METAL STAMP TO READ:

- 750
- CU
- D-NT
- "SUFFIX"
- 646 KCMIL 1600/24
- 
- 

USE BELOW OPTIONAL SUFFIXES FOR ALTERNATE LUG CONFIGURATIONS:
 -45 FOR 45° BENT PAD
 -90 FOR 90° BENT PAD
 -FL FOR FLARED BARREL ENTRY
 -U FOR UNDRILLED PAD
 EXAMPLE: BBLZ-075D-2TC38-NT-FL

INK STAMP REFERENCE



NOTES:

- ALL DIMENSIONS IN INCHES UNLESS OTHERWISE SPECIFIED
- SEE INSTALLATION SHEET FOR WIRE SIZE AND TOOLING RECOMMENDATIONS
- TIN-PLATED TO INHIBIT CORROSION
- RATED FOR COPPER CONDUCTORS ONLY
- BEVELED ENTRY FOR EASY CABLE INSERTION
- INSPECTION WINDOW TO ENSURE FULL CABLE INSERTION
- CONNECTORS ARE SUITABLE FOR VOLTAGES UP TO 35 KV
- FOR APPLICATIONS GREATER THAN 2000 VOLTS, CONSULT CABLE MANUFACTURER FOR VOLTAGE STRESS RELIEF INSTRUCTIONS
- CONNECTORS ARE UL LISTED PER UL486A-B AND CSA CERTIFIED PER C22.2 NO.65 FOR POWER APPLICATIONS UP TO 90°C



NO.	ECN	DATE
REVISIONS		

		COPPER TUBING	
QTY.	PT.	NAME OR DESCRIPTION	
		LONG BARREL NARROW TONGUE LUG for 750 MCM COPPER CONDUCTORS	
REF. DWG'S: 5H02-96570		H:\5H02\BBLZ-075D-NT	
DRAWN BY: DT		DATE: 7/21/2023	CHK'D: QJB
SCALE: 1:1		INTERPRET PER ASME Y14.5-2009	
SIZE: B		FILE: 5H02	
DWG. NO. BBLZ-075D-NT		REV. -	
SEE TABLE		CAT. NO.	
PENNUNION™ 229 WATERFORD STREET EDINBORO, PA 16412 USA			