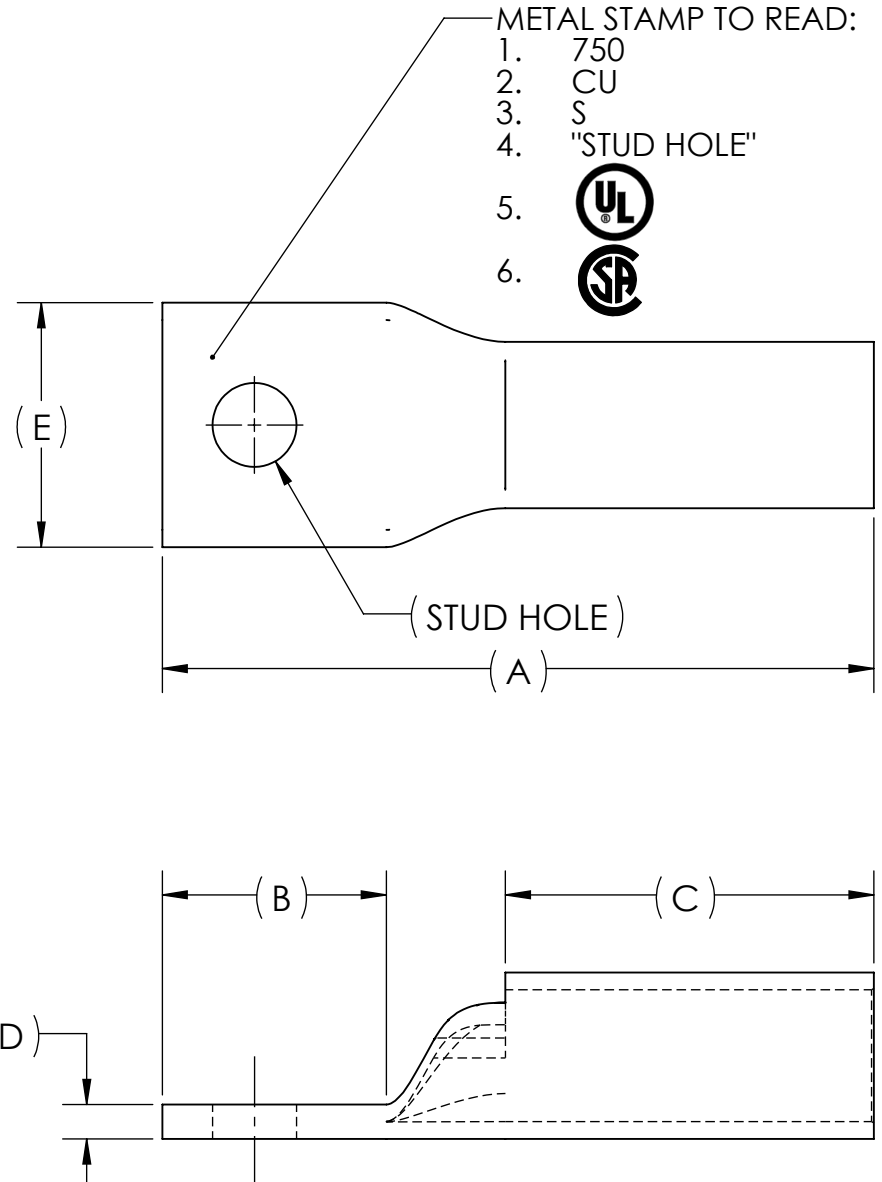
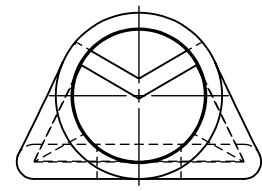
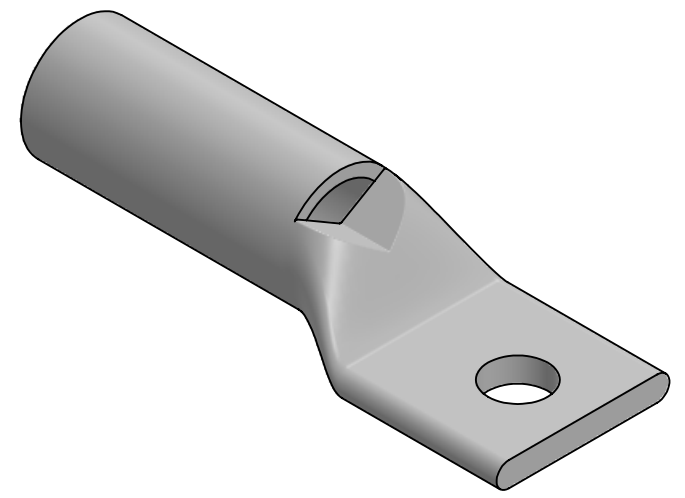
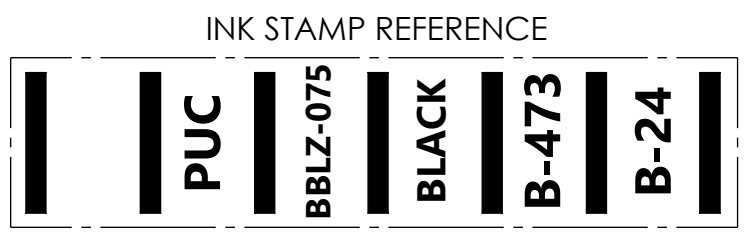


|          |           |      |   |
|----------|-----------|------|---|
| DWG. NO. | BBLZ-075S | REV. | - |
|----------|-----------|------|---|

| REV. | CAT. NO.  | STUD HOLE | DIMENSIONS |      |      |     |      | APPROX. WEIGHT (LB) | STRIP LENGTH |
|------|-----------|-----------|------------|------|------|-----|------|---------------------|--------------|
|      |           |           | A          | B    | C    | D   | E    |                     |              |
| -    | BBLZ-075S | 5/8       | 5.56       | 1.75 | 2.88 | .27 | 1.91 | 0.856               | 3.00         |



USE BELOW OPTIONAL SUFFIXES FOR ALTERNATE LUG CONFIGURATIONS:  
 -45 FOR 45° BENT PAD  
 -90 FOR 90° BENT PAD  
 -FL FOR FLARED BARREL ENTRY  
 -U FOR UNDRILLED PAD  
 EXAMPLE: BBLZ-075S-FL



- NOTES:
- ALL DIMENSIONS IN INCHES UNLESS OTHERWISE SPECIFIED
  - SEE INSTALLATION SHEET FOR WIRE SIZE AND TOOLING RECOMMENDATIONS
  - TIN-PLATED TO INHIBIT CORROSION
  - RATED FOR COPPER CONDUCTORS ONLY
  - BEVELED ENTRY FOR EASY CABLE INSERTION
  - INSPECTION WINDOW TO ENSURE FULL CABLE INSERTION
  - CONNECTORS ARE SUITABLE FOR VOLTAGES UP TO 35 KV
  - FOR APPLICATIONS GREATER THAN 2000 VOLTS, CONSULT CABLE MANUFACTURER FOR VOLTAGE STRESS RELIEF INSTRUCTIONS
  - CONNECTORS ARE UL LISTED PER UL486A-B AND CSA CERTIFIED PER C22.2 NO.65 FOR POWER APPLICATIONS UP TO 90°C



| NO.       | ECN | DATE |
|-----------|-----|------|
| REVISIONS |     |      |

|  |     |                     |                               |  |  |            |  |                   |               |
|--|-----|---------------------|-------------------------------|--|--|------------|--|-------------------|---------------|
|  |     |                     |                               |  |  |            |  |                   |               |
|  |     | X                   |                               |  |  |            |  |                   | COPPER TUBING |
| QTY.   | PT. | NAME OR DESCRIPTION |                               |  |  |            |  |                   |               |
| PENN-CRIMP LUG<br>for<br>750 MCM COPPER CONDUCTORS |     |                     |                               |  |  |            |  |                   |               |
| REF. DWG'S:  |     |                     |                               |  |  |            |  | H:\2H02\BBLZ-075S |               |
| DRAWN BY: DT                                       |     |                     | DATE: 6/5/2023                |  |  | CHK'D: QJB |  |                   |               |
| SCALE: 2:3   |     |                     | INTERPRET PER ASME Y14.5-2009 |  |  | FILE: 2H02 |  |                   |               |
| SIZE: B  |     | DWG. NO.            |                               | BBLZ-075S                                      |  | REV.       |  | -                 |               |
| SEE TABLE  |     | CAT. NO.            |                               | 229 WATERFORD STREET<br>EDINBORO, PA 16412 USA |  | PENNUNION™ |  |                   |               |