

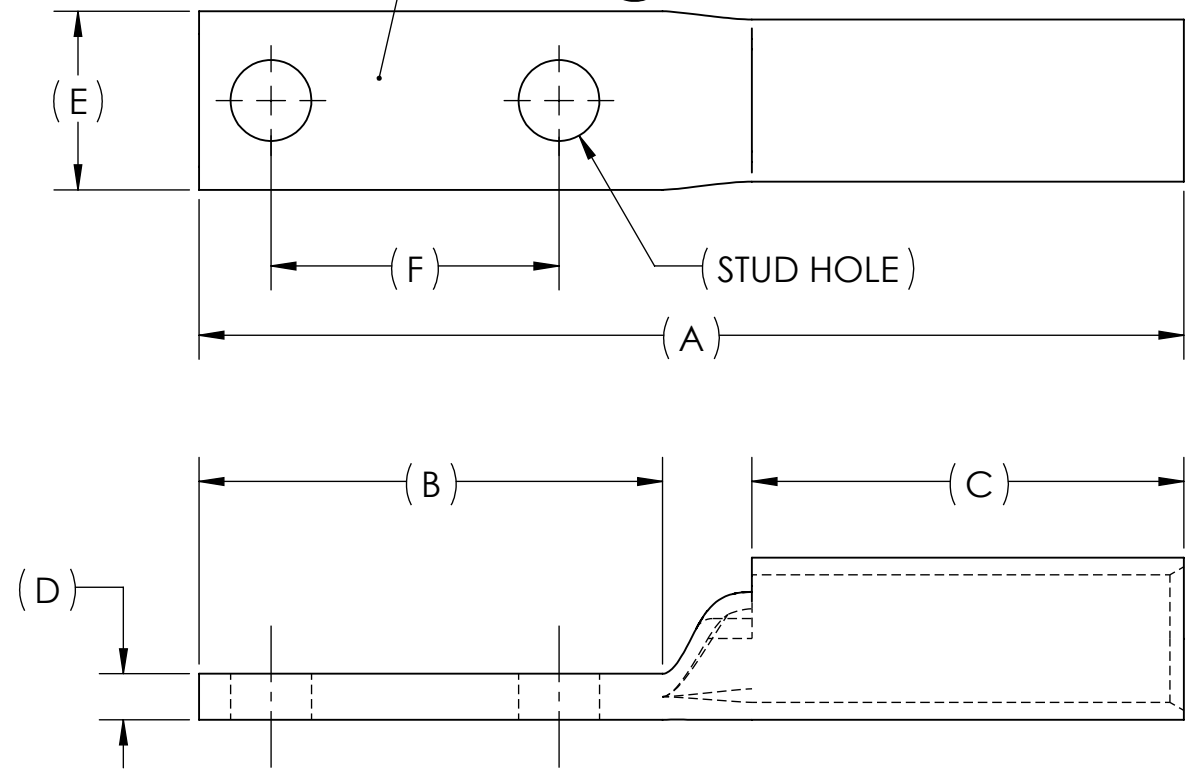


DWG. NO. **BBLZ-2/0D-NT** REV. -

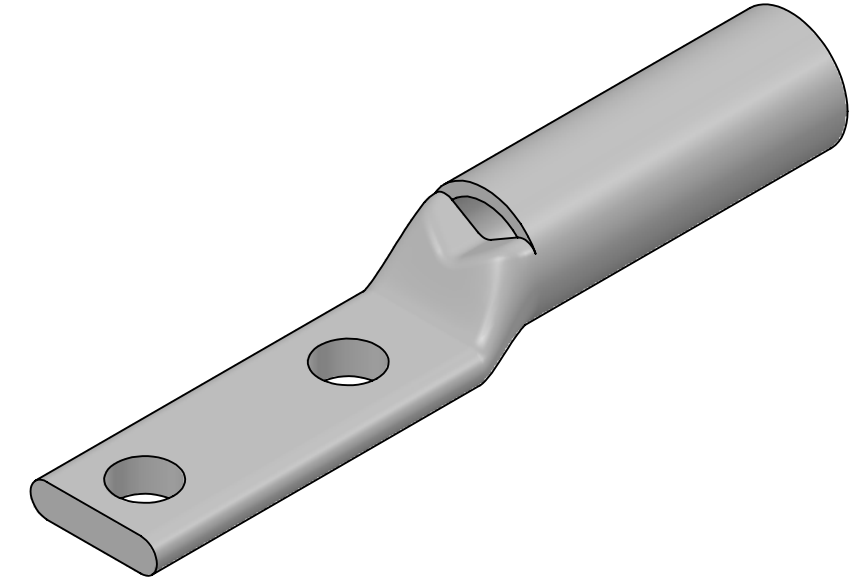
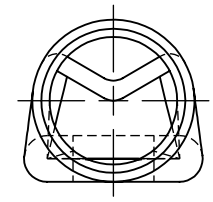
CAT. NO.	SUFFIX	STUD HOLE	DIMENSIONS						APPROX. WEIGHT (LB)	STRIP LENGTH
			A	B	C	D	E	F		
BBLZ-2/0D-2TC14E2-NT	2TC14E2	1/4	3.17	1.36	1.50	.16	.62	.75	0.090	1.63
BBLZ-2/0D-2TC38-NT	2TC38	3/8	3.64	1.83	1.50	.16	.62	1.00	0.097	

- METAL STAMP TO READ:
- 2/0
  - CU
  - D-NT
  - "SUFFIX"
  - DB
  - 
  - 

USE BELOW OPTIONAL SUFFIXES FOR ALTERNATE LUG CONFIGURATIONS:  
 -45 FOR 45° BENT PAD  
 -90 FOR 90° BENT PAD  
 -FL FOR FLARED BARREL ENTRY  
 -U FOR UNDRILLED PAD  
 EXAMPLE: BBLZ-2/0D-2TC14E2-NT-FL




INK STAMP REFERENCE



- NOTES:
- ALL DIMENSIONS IN INCHES UNLESS OTHERWISE SPECIFIED
  - SEE INSTALLATION SHEET FOR WIRE SIZE AND TOOLING RECOMMENDATIONS
  - TIN-PLATED TO INHIBIT CORROSION
  - RATED FOR COPPER CONDUCTORS ONLY
  - BEVELED ENTRY FOR EASY CABLE INSERTION
  - INSPECTION WINDOW TO ENSURE FULL CABLE INSERTION
  - CONNECTORS ARE SUITABLE FOR VOLTAGES UP TO 35 KV
  - FOR APPLICATIONS GREATER THAN 2000 VOLTS, CONSULT CABLE MANUFACTURER FOR VOLTAGE STRESS RELIEF INSTRUCTIONS
  - CONNECTORS ARE UL LISTED PER UL486A-B AND CSA CERTIFIED PER C22.2 NO.65 FOR POWER APPLICATIONS UP TO 90°C
  - CONNECTORS ARE UL LISTED FOR GROUNDING, BONDING, AND DIRECT BURIAL APPLICATIONS PER UL467
  - CONNECTORS ARE CSA CERTIFIED FOR GROUNDING, BONDING, AND DIRECT BURIAL APPLICATIONS PER C22.2 NO.41



NO.	ECN	DATE
REVISIONS		

X		COPPER TUBING	
QTY.	PT.	NAME OR DESCRIPTION	
		LONG BARREL NARROW TONGUE LUG for 2/0 AWG COPPER CONDUCTORS	
REF. DWG'S: 2H02-56158		H:\2H02\BBLZ-2.0D-NT	
DRAWN BY: DT		DATE: 7/19/2023	CHK'D: QJB
SCALE: 3:2		INTERPRET PER ASME Y14.5-2009	
SIZE: B	DWG. NO. <b>BBLZ-2/0D-NT</b>	REV. -	
 229 WATERFORD STREET EDINBORO, PA 16412 USA			