

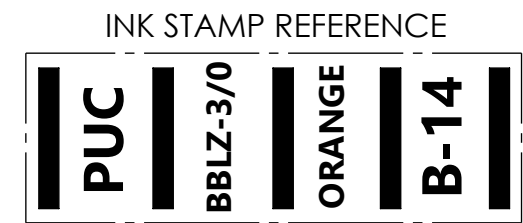
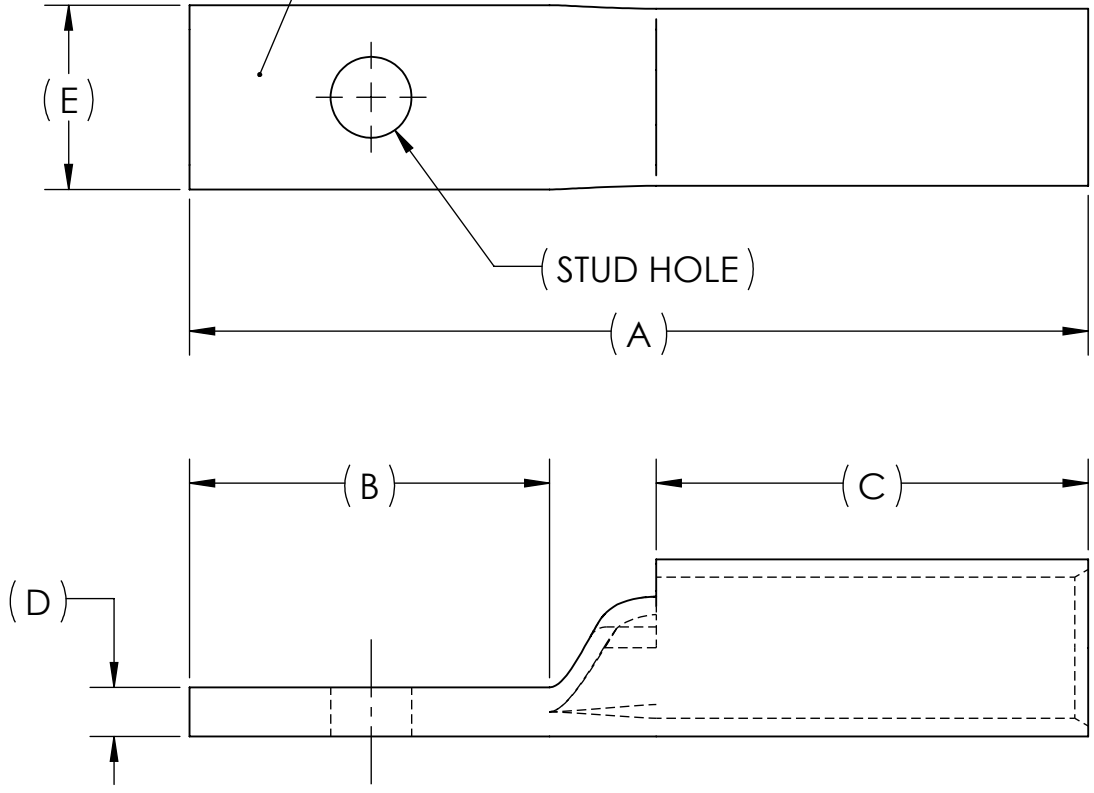


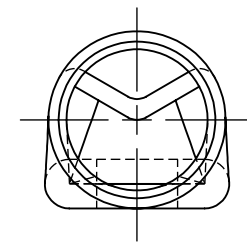
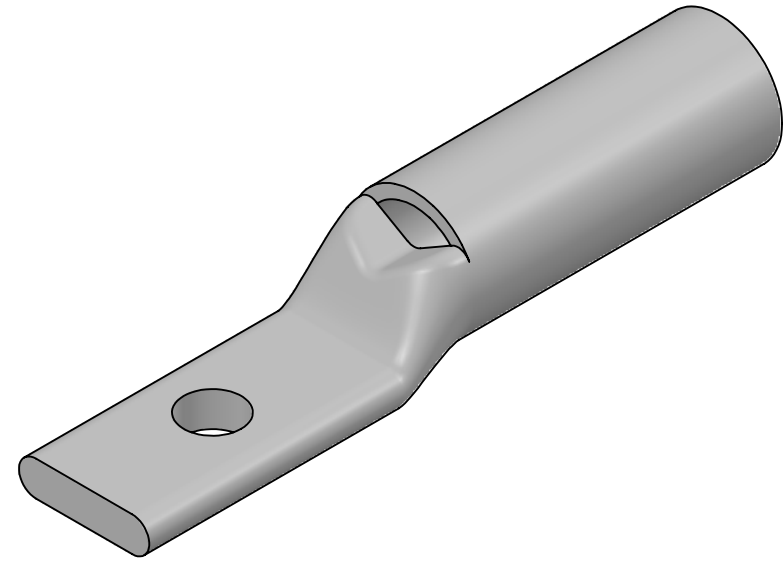
DWG. NO. **BBLZ-3/OS-NT** REV. -

CAT. NO.	SUFFIX	STUD HOLE	DIMENSIONS					APPROX. WEIGHT (LB)	STRIP LENGTH
			A	B	C	D	E		
BBLZ-3/OS3-NT	S3-NT	1/4	3.12	1.25	1.50	.17	.64	0.104	1.63
BBLZ-3/OS4-NT	S4-NT	5/16	3.12	1.25	1.50	.17	.64	0.102	
BBLZ-3/OS2-NT	S2-NT	3/8	3.12	1.25	1.50	.17	.64	0.100	

- METAL STAMP TO READ:
- 3/0
  - CU
  - "SUFFIX"
  - "STUD HOLE"
  - DB
  - 
  - 



USE BELOW OPTIONAL SUFFIXES FOR ALTERNATE LUG CONFIGURATIONS:  
 -45 FOR 45° BENT PAD  
 -90 FOR 90° BENT PAD  
 -FL FOR FLARED BARREL ENTRY  
 -U FOR UNDRILLED PAD  
 EXAMPLE: BBLZ-3/OS3-NT-FL



- NOTES:
- ALL DIMENSIONS IN INCHES UNLESS OTHERWISE SPECIFIED
  - SEE INSTALLATION SHEET FOR WIRE SIZE AND TOOLING RECOMMENDATIONS
  - TIN-PLATED TO INHIBIT CORROSION
  - RATED FOR COPPER CONDUCTORS ONLY
  - BEVELED ENTRY FOR EASY CABLE INSERTION
  - INSPECTION WINDOW TO ENSURE FULL CABLE INSERTION
  - CONNECTORS ARE SUITABLE FOR VOLTAGES UP TO 35 KV
  - FOR APPLICATIONS GREATER THAN 2000 VOLTS, CONSULT CABLE MANUFACTURER FOR VOLTAGE STRESS RELIEF INSTRUCTIONS
  - CONNECTORS ARE UL LISTED PER UL486A-B AND CSA CERTIFIED PER C22.2 NO.65 FOR POWER APPLICATIONS UP TO 90°C
  - CONNECTORS ARE UL LISTED FOR GROUNDING, BONDING, AND DIRECT BURIAL APPLICATIONS PER UL467
  - CONNECTORS ARE CSA CERTIFIED FOR GROUNDING, BONDING, AND DIRECT BURIAL APPLICATIONS PER C22.2 NO.41



NO.	ECN	DATE
REVISIONS		

QTY.	PT.	NAME OR DESCRIPTION
	X	COPPER TUBING
		LONG BARREL NARROW TONGUE LUG for 3/0 AWG COPPER CONDUCTORS
REF. DWG'S: 2H02-56149		H:\2H02\BBLZ-3.0S-NT
DRAWN BY: DT		DATE: 7/18/2023
SCALE: 3:2		INTERPRET PER ASME Y14.5-2009
SIZE: B		FILE: 2H02
DWG. NO. <b>BBLZ-3/OS-NT</b>		REV. -

**PENNUNION**  
 229 WATERFORD STREET  
 EDINBORO, PA 16412 USA