



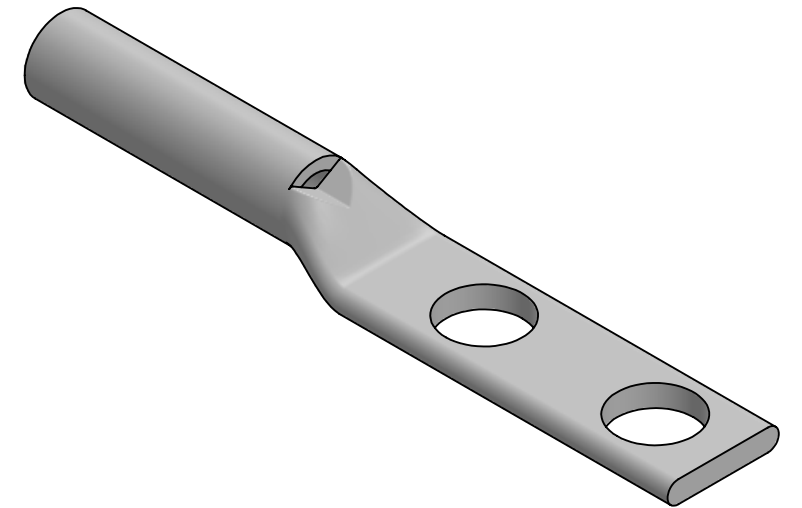
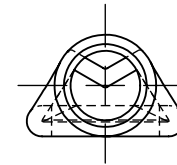
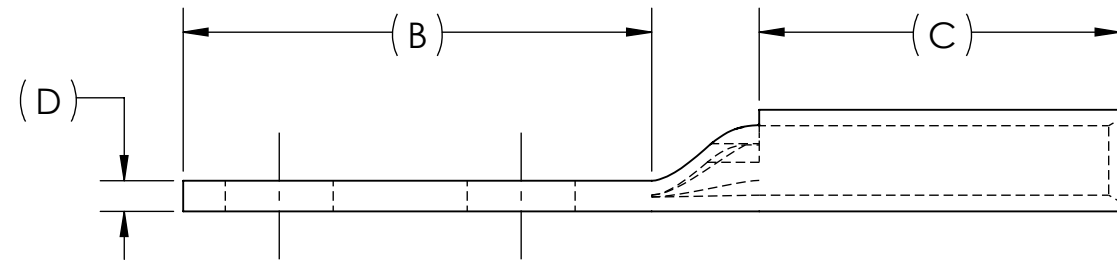
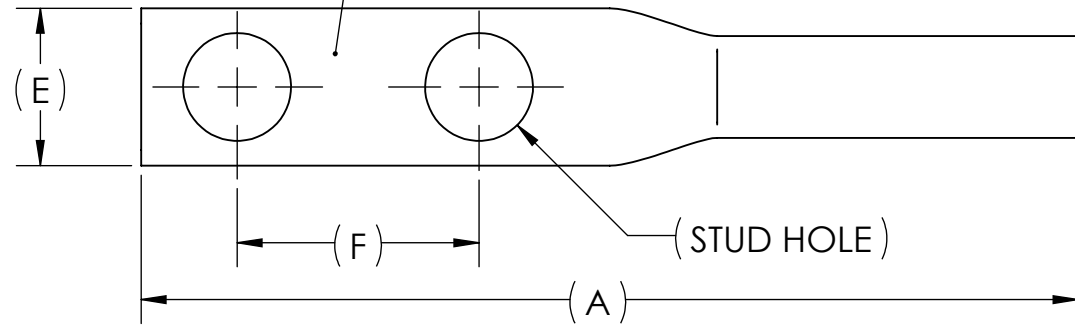
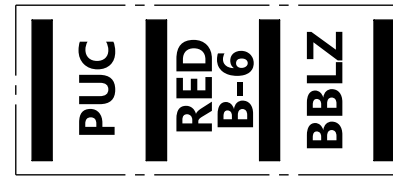
DWG. NO.	REV.	REV.	CAT. NO.	SUFFIX	STUD HOLE	DIMENSIONS					APPROX. WEIGHT (LB)	STRIP LENGTH	
						A	B	C	D	E			F
	-												
		01	BBLZ-8D2TC14	2TC14	1/4	2.44	1.22	.94	.08	.41	.63	0.021	1.06
		01	BBLZ-8D2TC14E2	2TC14E2	1/4	2.58	1.36	.94	.08	.41	.75	0.022	
		01	BBLZ-8D2TC38E3	2TC38E3	3/8	3.05	1.83	.94	.06	.56	.81	0.026	
		-	BBLZ-8D2TC38	2TC38	3/8	2.63	1.75	.75	.06	.60	1.00	0.024	

METAL STAMP TO READ:

- 8
- CU
- D
- "SUFFIX"
- DB
- 
- 

USE BELOW OPTIONAL SUFFIXES FOR ALTERNATE LUG CONFIGURATIONS:  
 -45 FOR 45° BENT PAD  
 -90 FOR 90° BENT PAD  
 -FL FOR FLARED BARREL ENTRY  
 -U FOR UNDRILLED PAD  
 EXAMPLE: BBLZ-8D2TC14E2-FL

INK STAMP REFERENCE



NOTES:

- ALL DIMENSIONS IN INCHES UNLESS OTHERWISE SPECIFIED
- SEE INSTALLATION SHEET FOR WIRE SIZE AND TOOLING RECOMMENDATIONS
- TIN-PLATED TO INHIBIT CORROSION
- RATED FOR COPPER CONDUCTORS ONLY
- BEVELED ENTRY FOR EASY CABLE INSERTION
- INSPECTION WINDOW TO ENSURE FULL CABLE INSERTION
- CONNECTORS ARE SUITABLE FOR VOLTAGES UP TO 35 KV
- FOR APPLICATIONS GREATER THAN 2000 VOLTS, CONSULT CABLE MANUFACTURER FOR VOLTAGE STRESS RELIEF INSTRUCTIONS
- CONNECTORS ARE UL LISTED PER UL486A-B AND CSA CERTIFIED PER C22.2 NO.65 FOR POWER APPLICATIONS UP TO 90°C
- CONNECTORS ARE UL LISTED FOR GROUNDING, BONDING, AND DIRECT BURIAL APPLICATIONS PER UL467
- CONNECTORS ARE CSA CERTIFIED FOR GROUNDING, BONDING, AND DIRECT BURIAL APPLICATIONS PER C22.2 NO.41



NO.	ECN	DATE
REVISIONS		

						X	COPPER TUBING		
QTY.		PT.	NAME OR DESCRIPTION						
			PENN-CRIMP LUG for 8 AWG COPPER CONDUCTORS						
REF. DWG'S: 5H02-97875, 2H02-55115, 2H02-55116, 2H02-55117						H:\2H02\BBLZ-8D			
			DRAWN BY: DT		DATE: 6/7/2023		CHK'D: QJB		
			SCALE: 2:1		INTERPRET PER ASME Y14.5-2009		FILE: 2H02		
			SIZE: B		DWG. NO.		REV.		
					BBLZ-8D		-		
			SEE TABLE		CAT. NO.				
					PENNUNION™ 229 WATERFORD STREET EDINBORO, PA 16412 USA				