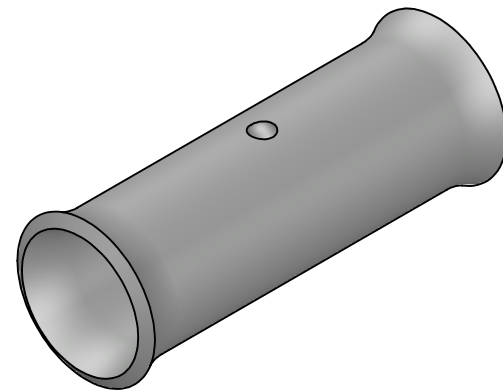
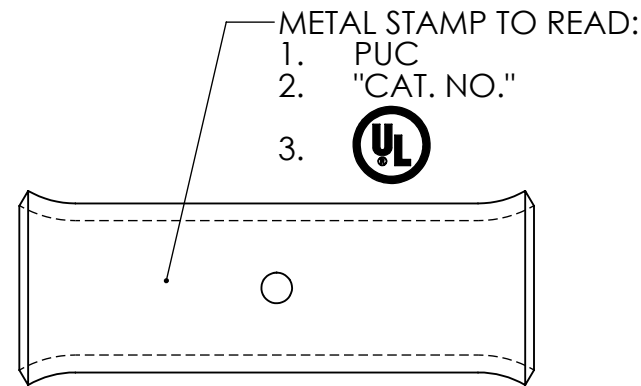


DWG. NO. **BLS-FL SERIES**

REV. -

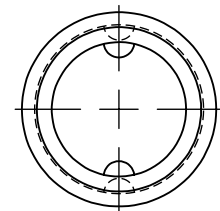
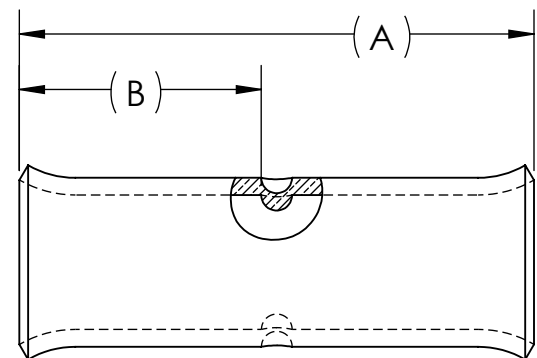
REV.	CAT. NO.	DIMENSIONS		APPROX. WEIGHT (LB)	STRIP LENGTH	CLASS B & C CONDUCTOR SIZE	PENN-UNION DIELESS TOOLING CLASS B & C (NO. OF CRIMPS)				DLO CONDUCTOR SIZE	PENN-UNION DIELESS TOOLING DLO (NO. OF CRIMPS)				COPPER CLASS G ROPE STR. CONDUCTOR SIZE	PENN-UNION DIELESS TOOLING CLASS G (NO. OF CRIMPS)
		A	B														
-	BLS8FL	1.10	.51	0.007	.76	8 AWG	-	-	-	-	37/24	-	-	-	-	8 AWG 49/.0184	TDM-5050 (2)
-	BLS6FL	1.15	.54	0.013	.79	6 AWG	TDM-5050 (2)	TDM-250-XF (2)	-	-	61/24	TDM-5050 (2)	TDM-250-XF (1)	-	-	6 AWG 49/.0231	
-	BLS4FL	1.22	.57	0.016	.82	4 AWG			-		105/24 125/24			-		4 AWG 49/.0292	
-	BLS2FL	1.34	.63	0.023	.88	2 AWG		TDM-250-XF (1)			150/24					2 AWG 49/.0368	TDM-5050 (3)
-	BLS1FL	1.34	.63	0.024	.88	1 AWG					-	TDM-5050 (3)				1 AWG 133/.0251	
-	BLS1/OFL	1.56	.74	0.036	.99	1/0 AWG	TDM-5050 (3)	TDM-250-XF (2)	TPU-6 TPU-6FT TPU-6H TPU-6FTH TPU-6B TPU-6FTB (1)	TDH-1000 TDH-1000B TDH-1000H (1)	275/24		TDM-250-XF (2)	TPU-6 TPU-6FT TPU-6H TPU-6FTH TPU-6B TPU-6FTB (1)	TDH-1000 TDH-1000B TDH-1000H (1)	1/0 AWG 133/.0282	
-	BLS2/OFL*	1.81	.87	0.047	1.12	2/0 AWG					325/24					2/0 AWG 133/.0316	
-	BLS3/OFL*	1.90	.91	0.060	1.16	3/0 AWG					450/24					3/0 AWG 133/.0355	
-	BLS4/OFL	2.46	1.19	0.080	1.44	4/0 AWG	-	-			550/24	-	-			4/0 AWG 133/.0399	-

- FOR UNPLATED CONNECTORS, ADD SUFFIX "UP" TO CATALOG NUMBER
- FOR NON-FLARED CONNECTORS, REMOVE SUFFIX "FL" FROM CATALOG NUMBER
- *REFER TO INSTALLATION INSTRUCTIONS FOR ADDITIONAL INFORMATION



NOTES:

1. ALL DIMENSIONS IN INCHES UNLESS OTHERWISE SPECIFIED
2. TIN-PLATED TO INHIBIT CORROSION
3. RATED FOR COPPER CONDUCTORS ONLY
4. FLARED BARREL ENTRY PROVIDES EASY CABLE INSERTION FOR FINE STRANDED CABLES AND MINIMIZES STRAIN ON CONDUCTOR
5. CONNECTORS ARE SUITABLE FOR APPLICATIONS UP TO 35 KV
6. FOR APPLICATIONS GREATER THAN 2000 VOLTS, CONSULT CABLE MANUFACTURER FOR VOLTAGE STRESS RELIEF INSTRUCTIONS
7. CONNECTORS ARE UL LISTED PER UL486A-B FOR POWER APPLICATIONS UP TO 90°C



		COPPER TUBING	
QTY.	PT.	NAME OR DESCRIPTION	
		COPPER BATTERY SPLICE for COPPER CONDUCTORS	
REF. DWG'S: 5H16-96907 THROUGH 96915		H:\5H16\BLS-FL	
DRAWN BY: DT		DATE: 8/16/2023	CHK'D: QJB
SCALE: 2:1		INTERPRET PER ASME Y14.5-2009	
FILE: 5H16			
SIZE: B	DWG. NO. BLS-FL SERIES	REV. -	
SEE TABLE	CAT. NO.	229 WATERFORD STREET EDINBORO, PA 16412 USA	