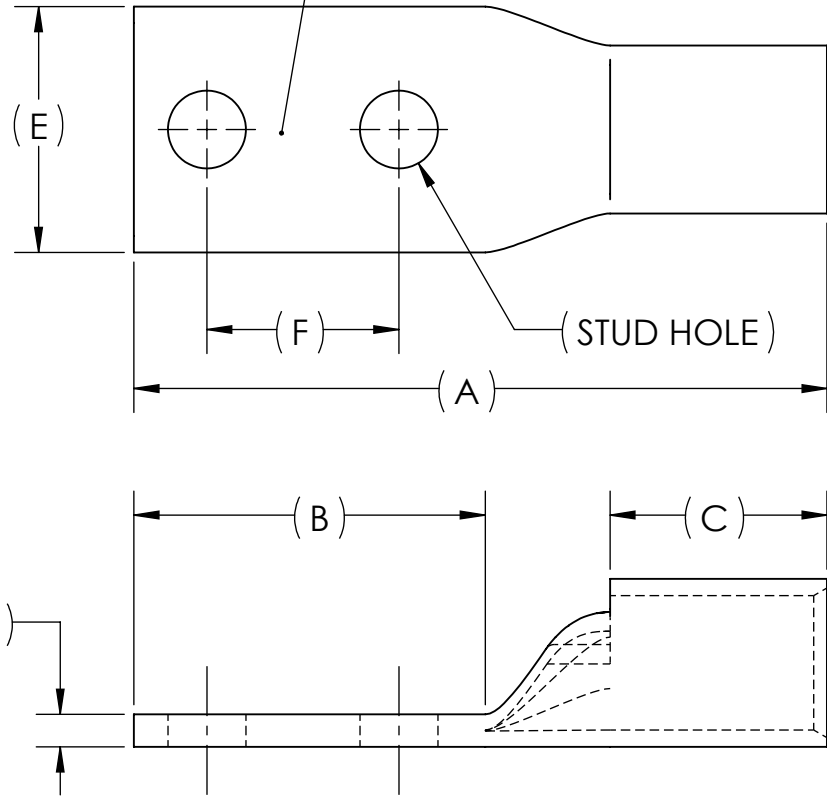


DWG. NO. **BLU-035D** REV. **-**

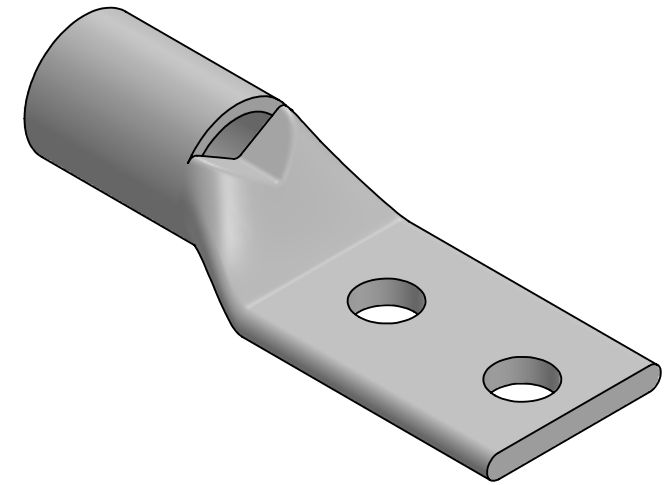
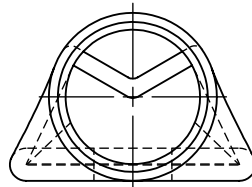
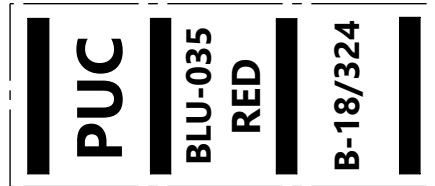
REV.	CAT. NO.	SUFFIX	STUD HOLE	DIMENSIONS						APPROX. WEIGHT (LB)	STRIP LENGTH
				A	B	C	D	E	F		
01	BLU-035D2TC14E2	2TC14E2	1/4	3.14	1.36	1.13	.17	1.28	.75	0.206	1.25
01	BLU-035D2TC516	2TC516	5/16	4.63	2.88	1.13	.17	1.28	1.75	0.304	
07	BLU-035D2TC38	2TC38	3/8	3.61	1.83	1.13	.17	1.28	1.00	0.230	
01	BLU-035D2TC12	2TC12	1/2	4.18	2.40	1.13	.17	1.28	1.25	0.259	
11	BLU-035D	-	1/2	4.63	2.88	1.13	.17	1.28	1.75	0.290	

METAL STAMP TO READ:

1. 350
2. CU
3. D
4. "SUFFIX"
5. DB
6. 
7. 



INK STAMP REFERENCE



USE BELOW OPTIONAL SUFFIXES FOR ALTERNATE LUG CONFIGURATIONS:  
 -45 FOR 45° BENT PAD  
 -90 FOR 90° BENT PAD  
 -FL FOR FLARED BARREL ENTRY  
 -U FOR UNDRILLED PAD  
 EXAMPLE: BLU-035D2TC14E2-FL

NOTES:

1. ALL DIMENSIONS IN INCHES UNLESS OTHERWISE SPECIFIED
2. SEE INSTALLATION SHEET FOR WIRE SIZE AND TOOLING RECOMMENDATIONS
3. TIN-PLATED TO INHIBIT CORROSION
4. RATED FOR COPPER CONDUCTORS ONLY
5. BEVELED ENTRY FOR EASY CABLE INSERTION
6. INSPECTION WINDOW TO ENSURE FULL CABLE INSERTION
7. CONNECTORS ARE SUITABLE FOR VOLTAGES UP TO 35 KV
8. FOR APPLICATIONS GREATER THAN 2000 VOLTS, CONSULT CABLE MANUFACTURER FOR VOLTAGE STRESS RELIEF INSTRUCTIONS
9. CONNECTORS ARE UL LISTED PER UL486A-B AND CSA CERTIFIED PER C22.2 NO.65 FOR POWER APPLICATIONS UP TO 90°C
10. CONNECTORS ARE UL LISTED FOR GROUNDING, BONDING, AND DIRECT BURIAL APPLICATIONS PER UL467



NO.	ECN	DATE
REVISIONS		

QTY.	PT.	NAME OR DESCRIPTION
	X	COPPER TUBING
		<b>PENN-CRIMP LUG</b>
		for
		350 MCM COPPER CONDUCTORS
REF. DWG'S: 2H03-55260, 2H03-55261, 2H03-47707, 2H03-55262, 2H03-32673 H:\2H03\BLU-035D		
DRAWN BY: DT		DATE: 2/22/2023
SCALE: 1:1		INTERPRET PER ASME Y14.5-2009
SIZE: B		FILE: 2H03
DWG. NO. <b>BLU-035D</b>		REV. <b>-</b>

