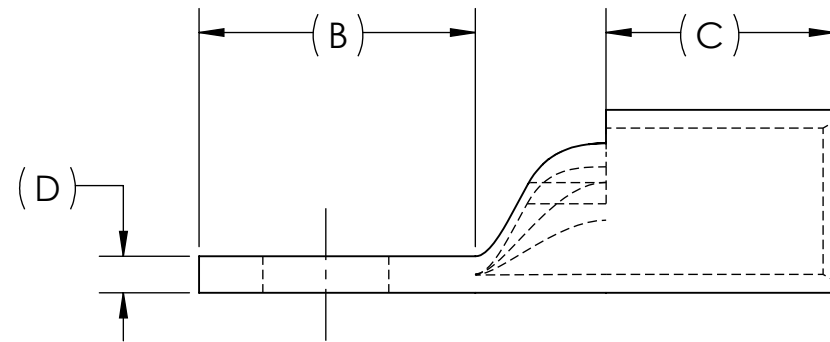
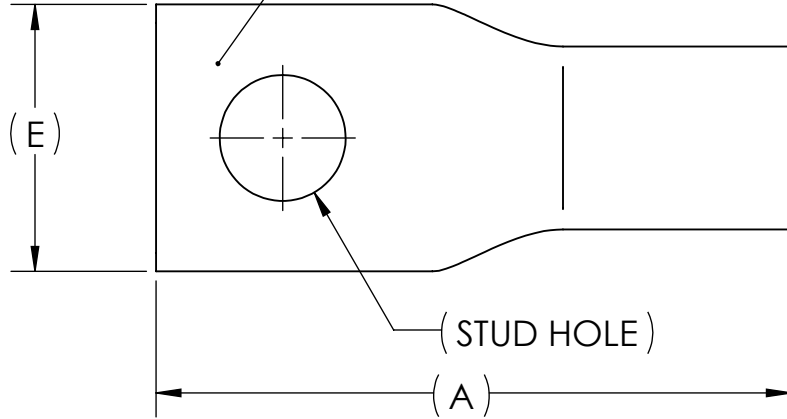


DWG. NO. **BLU-040S** REV. -

METAL STAMP TO READ:

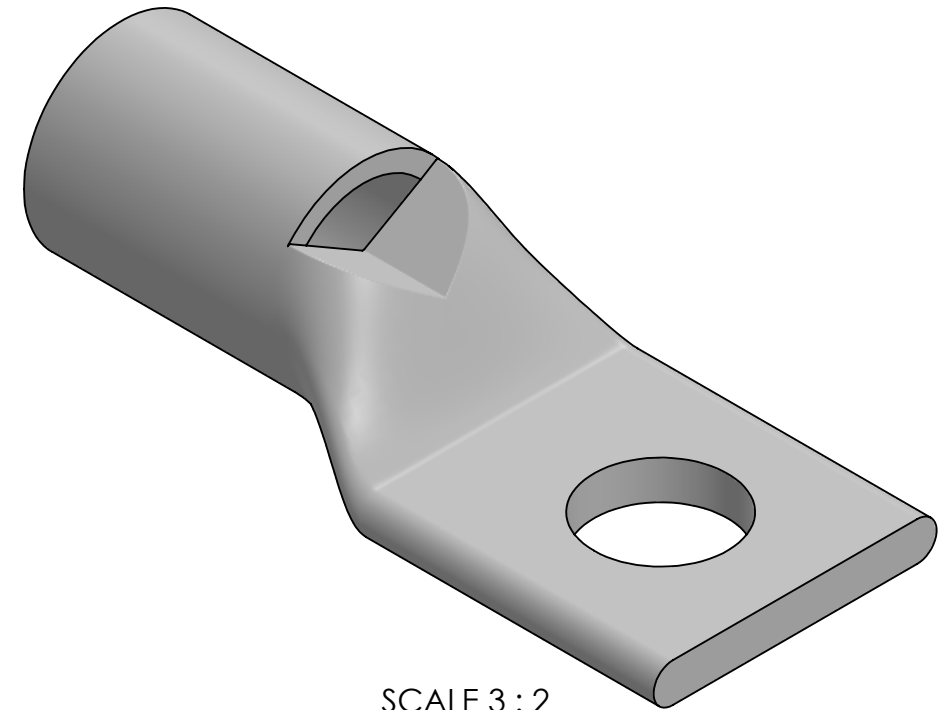
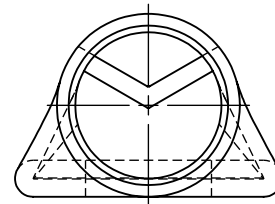
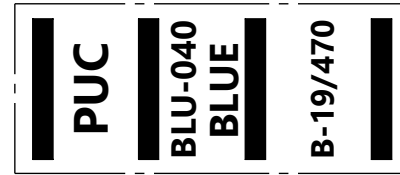
1. 400
2. CU
3. "SUFFIX"
4. "STUD HOLE"
5. DB
6. 
7. 



REV.	CAT. NO.	SUFFIX	STUD HOLE	DIMENSIONS					APPROX. WEIGHT (LB)	STRIP LENGTH
				A	B	C	D	E		
05	BLU-040S4	S4	1/2	3.06	1.19	1.19	.19	1.39	0.235	1.31
06	BLU-040S	S	5/8	3.31	1.44	1.19	.19	1.39	0.248	

USE BELOW OPTIONAL SUFFIXES FOR ALTERNATE LUG CONFIGURATIONS:
 -45 FOR 45° BENT PAD
 -90 FOR 90° BENT PAD
 -FL FOR FLARED BARREL ENTRY
 -U FOR UNDRILLED PAD
 EXAMPLE: BLU-040S4-FL

INK STAMP REFERENCE




SCALE 3 : 2

NOTES:

1. ALL DIMENSIONS IN INCHES UNLESS OTHERWISE SPECIFIED
2. SEE INSTALLATION SHEET FOR WIRE SIZE AND TOOLING RECOMMENDATIONS
3. TIN-PLATED TO INHIBIT CORROSION
4. RATED FOR COPPER CONDUCTORS ONLY
5. BEVELED ENTRY FOR EASY CABLE INSERTION
6. INSPECTION WINDOW TO ENSURE FULL CABLE INSERTION
7. CONNECTORS ARE SUITABLE FOR VOLTAGES UP TO 35 KV
8. FOR APPLICATIONS GREATER THAN 2000 VOLTS, CONSULT CABLE MANUFACTURER FOR VOLTAGE STRESS RELIEF INSTRUCTIONS
9. CONNECTORS ARE UL LISTED PER UL486A-B AND CSA CERTIFIED PER C22.2 NO.65 FOR POWER APPLICATIONS UP TO 90°C
10. CONNECTORS ARE UL LISTED FOR GROUNDING, BONDING, AND DIRECT BURIAL APPLICATIONS PER UL467



NO.	ECN	DATE
REVISIONS		

			X	COPPER TUBING						
	QTY.	PT.	NAME OR DESCRIPTION							
			PENN-CRIMP LUG							
			for							
			400 MCM COPPER CONDUCTORS							
	REF. DWG'S: 2H03-31400, 2H03-46109							H:\2H03\BLU-040S		
SEE TABLE	CAT. NO.	DRAWN BY: DT		DATE: 2/22/2023		CHK'D: QJB				
		SCALE: 1:1		INTERPRET PER ASME Y14.5-2009				FILE: 2H03		
		SIZE: B	DWG. NO.	 229 WATERFORD STREET EDINBORO, PA 16412 USA						REV.
		