

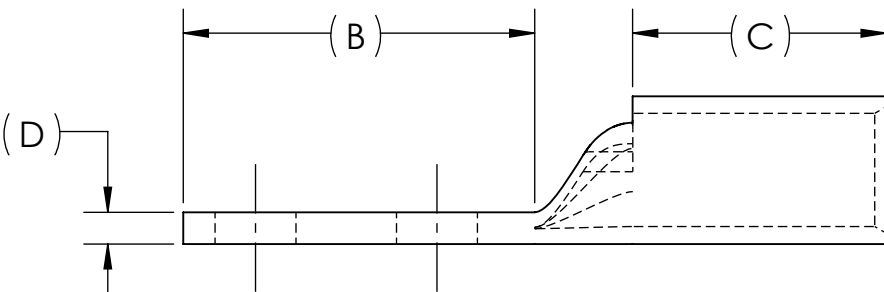
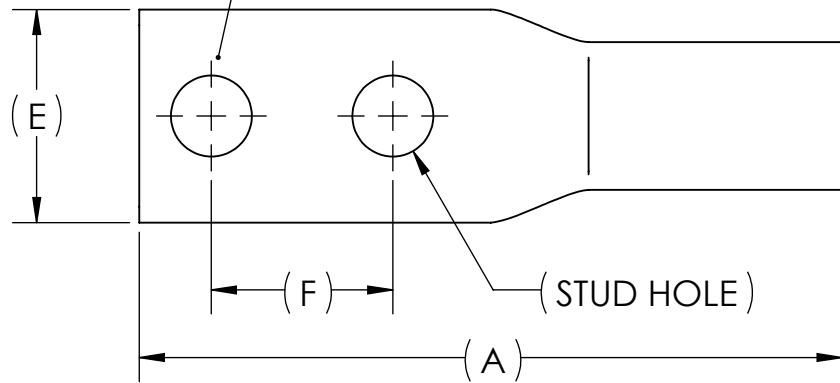


DWG. NO. BLU-1/0D REV. -

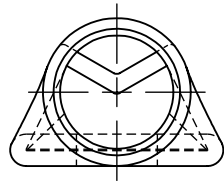
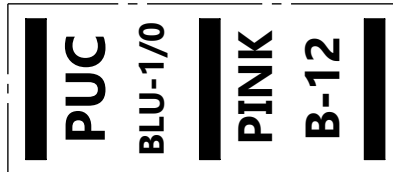
REV.	CAT. NO.	SUFFIX	STUD HOLE	DIMENSIONS						APPROX. WEIGHT (LB)	STRIP LENGTH
				A	B	C	D	E	F		
01	BLU-1/0D2TC14	2TC14	1/4	2.44	1.22	.88	.11	.74	.63	0.059	1.00
01	BLU-1/0D2TC14E2	2TC14E2	1/4	2.58	1.36	.88	.11	.74	.75	0.063	
08	BLU-1/0D2TC516E6	2TC516E6	5/16	2.81	1.62	.88	.11	.74	.88	0.066	
01	BLU-1/0D2TC516	2TC516	5/16	2.94	1.72	.88	.11	.74	1.00	0.069	
02	BLU-1/0D2	-	1/2	3.98	2.82	.89	.10	.82	1.75	0.088	
07	BLU-1/0D2TC38	2TC38	3/8	3.02	1.83	.88	.11	.74	1.00	0.069	
01	BLU-1/0D2NTC38	2NTC38	3/8	3.77	2.58	.88	.11	.74	1.75	0.088	

METAL STAMP TO READ:

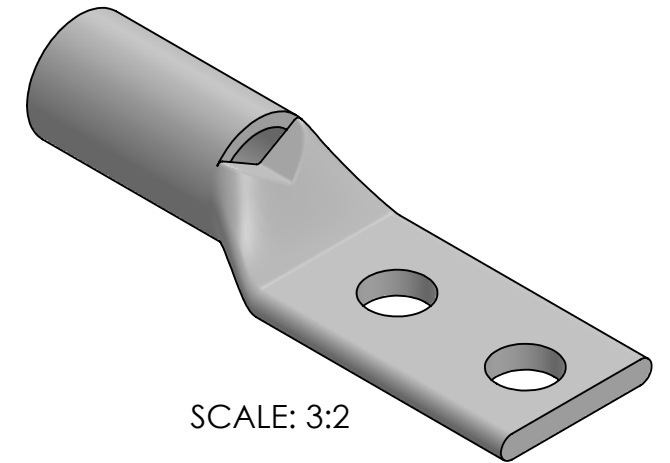
1. 1/0
2. CU
3. D
4. "SUFFIX"
5. DB
6. 
7. 



INK STAMP REFERENCE



USE BELOW OPTIONAL SUFFIXES FOR ALTERNATE LUG CONFIGURATIONS:  
 -45 FOR 45° BENT PAD  
 -90 FOR 90° BENT PAD  
 -FL FOR FLARED BARREL ENTRY  
 -U FOR UNDRILLED PAD  
 EXAMPLE: BLU-1/0D2TC516E6-FL



SCALE: 3:2

NOTES:

1. ALL DIMENSIONS IN INCHES UNLESS OTHERWISE SPECIFIED
2. SEE INSTALLATION SHEET FOR WIRE SIZE AND TOOLING RECOMMENDATIONS
3. TIN-PLATED TO INHIBIT CORROSION
4. RATED FOR COPPER CONDUCTORS ONLY
5. BEVELED ENTRY FOR EASY CABLE INSERTION
6. INSPECTION WINDOW TO ENSURE FULL CABLE INSERTION
7. CONNECTORS ARE SUITABLE FOR VOLTAGES UP TO 35 KV
8. FOR APPLICATIONS GREATER THAN 2000 VOLTS, CONSULT CABLE MANUFACTURER FOR VOLTAGE STRESS RELIEF INSTRUCTIONS
9. CONNECTORS ARE UL LISTED PER UL486A-B AND CSA CERTIFIED PER C22.2 NO.65 FOR POWER APPLICATIONS UP TO 90°C
10. CONNECTORS ARE UL LISTED FOR GROUNDING, BONDING, AND DIRECT BURIAL APPLICATIONS PER UL467
11. CONNECTORS ARE CSA CERTIFIED FOR GROUNDING, BONDING, AND DIRECT BURIAL APPLICATIONS PER C22.2 NO.41



NO.	ECN	DATE
REVISIONS		

				X	COPPER TUBING				
	QTY.	PT.	NAME OR DESCRIPTION						
			PENN-CRIMP LUG for 6 AWG COPPER CONDUCTORS						
			REF. DWG'S: 2H03-55249, 2H03-48157, 2H03-55248, 2H03-55247, 2H03-32661, 2H03-55246, 5H03-97866 H:\2H03\BLU-1/0D						
			DRAWN BY: DT		DATE: 2/22/2023	CHK'D: QJB			
			SCALE: 3:2		INTERPRET PER ASME Y14.5-2009	FILE: 2H03			
			SIZE: B						
			DWG. NO.						
			BLU-1/0D						REV. -