



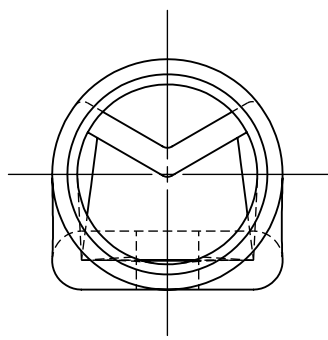
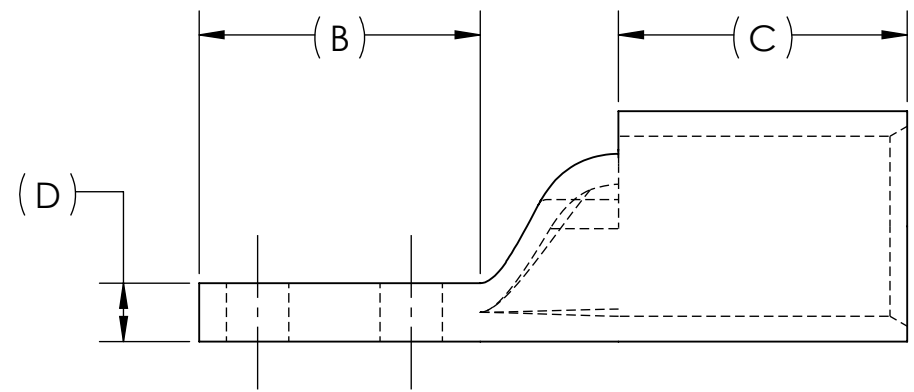
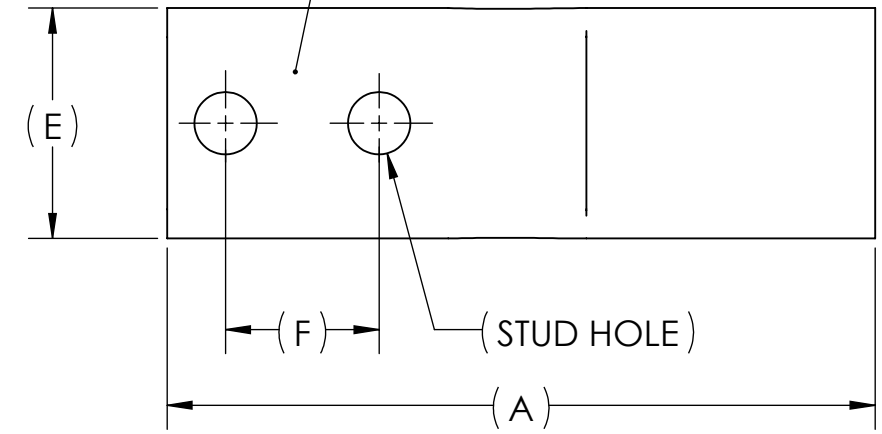
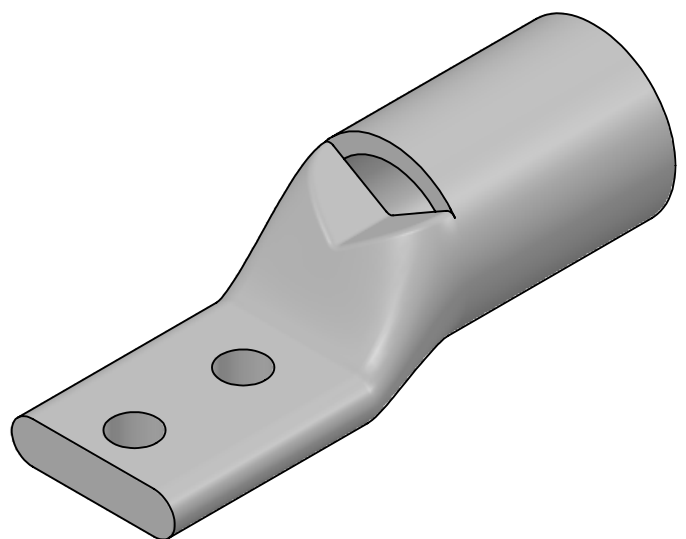
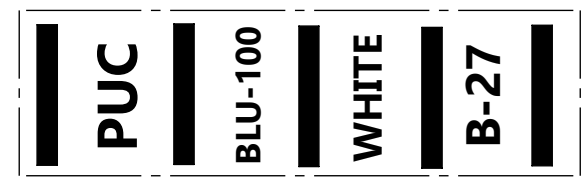
DWG. NO. **BLU-100D-NT** REV. **1**

CAT. NO.	SUFFIX	STUD HOLE	DIMENSIONS						APPROX. WEIGHT (LB)	STRIP LENGTH
			A	B	C	D	E	F		
BLU-100D2TC38-NT	2TC38	3/8	4.61	1.83	1.88	.38	1.50	1.00	0.886	2.00
BLU-100D2TC38E16-NT	2TC38E16	3/8	5.59	2.81	1.88	.38	1.50	1.75	1.056	
BLU-100D-NT	-	1/2	5.63	2.85	1.88	.38	1.50	1.75	1.041	

- METAL STAMP TO READ:
- 1000
 - CU
 - D-NT
 - "SUFFIX"
 - 777 KCMIL 1925/24
 - 
 - 

USE BELOW OPTIONAL SUFFIXES FOR ALTERNATE LUG CONFIGURATIONS:
 -45 FOR 45° BENT PAD
 -90 FOR 90° BENT PAD
 -FL FOR FLARED BARREL ENTRY
 -U FOR UNDRILLED PAD
 EXAMPLE: BLU-100D2TC38E16-NT-FL

INK STAMP REFERENCE



- NOTES:
- ALL DIMENSIONS IN INCHES UNLESS OTHERWISE SPECIFIED
 - SEE INSTALLATION SHEET FOR WIRE SIZE AND TOOLING RECOMMENDATIONS
 - TIN-PLATED TO INHIBIT CORROSION
 - RATED FOR COPPER CONDUCTORS ONLY
 - BEVELED ENTRY FOR EASY CABLE INSERTION
 - INSPECTION WINDOW TO ENSURE FULL CABLE INSERTION
 - CONNECTORS ARE SUITABLE FOR VOLTAGES UP TO 35 KV
 - FOR APPLICATIONS GREATER THAN 2000 VOLTS, CONSULT CABLE MANUFACTURER FOR VOLTAGE STRESS RELIEF INSTRUCTIONS
 - CONNECTORS ARE UL LISTED PER UL486A-B AND CSA CERTIFIED PER C22.2 NO.65 FOR POWER APPLICATIONS UP TO 90°C



NO.	ECN	DATE
1	12226	1/9/2023
REVISIONS		

QTY.	PT.	NAME OR DESCRIPTION
	X	COPPER TUBING
		STANDARD BARREL NARROW TONGUE LUG for 1000 MCM COPPER CONDUCTORS
REF. DWG'S: 2H03-56109		H:\2H03\BLU-100D-NT
DRAWN BY: DT		DATE: 7/11/2023
SCALE: 4:5		INTERPRET PER ASME Y14.5-2009
SIZE: B		FILE: 2H03
DWG. NO. BLU-100D-NT		REV. 1