

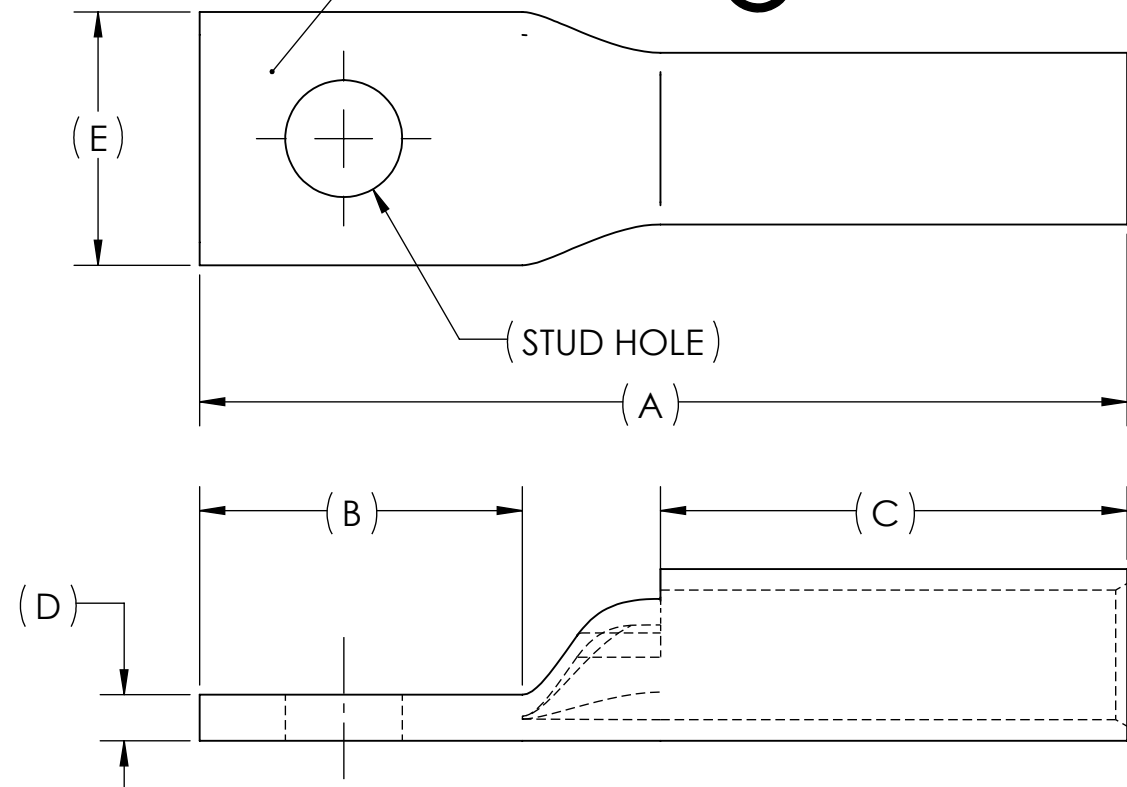


DWG. NO. **BLU-5S** REV. -

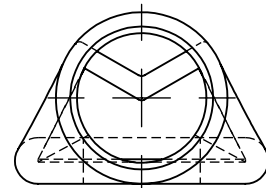
REV.	CAT. NO.	SUFFIX	STUD HOLE	DIMENSIONS					APPROX. WEIGHT (LB)	STRIP LENGTH
				A	B	C	D	E		
05	BLU-5S	S	#10	1.61	.56	.81	.08	.44	0.015	.94
06	BLU-5S1	S1	1/4	1.61	.69	.81	.07	.43	0.014	
-	BLU-5S2	S2	5/16	1.77	.72	.81	.06	.61	0.017	
-	BLU-5S3	S3	3/8	1.92	.87	.81	.06	.61	0.018	

METAL STAMP TO READ:

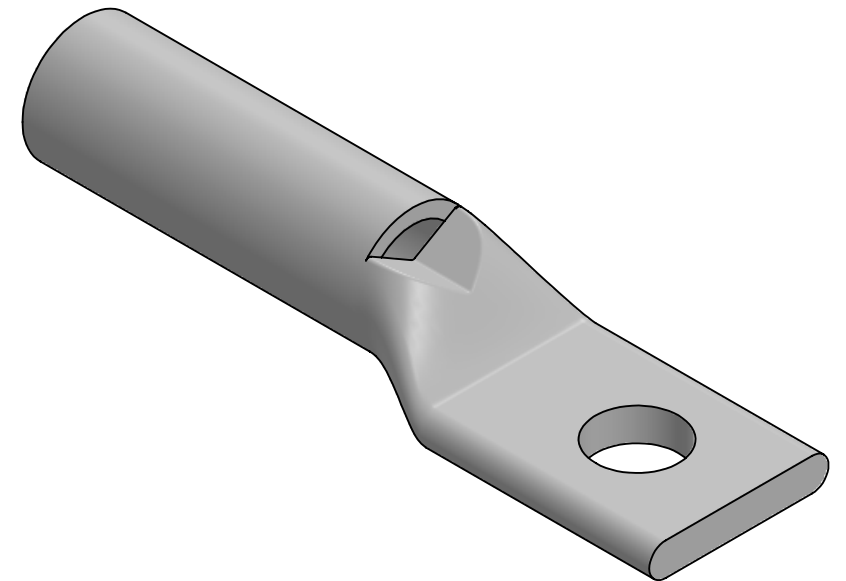
- 5
- CU
- "SUFFIX"
- "STUD HOLE"
- DB
- 
- 



INK STAMP REFERENCE



USE BELOW OPTIONAL SUFFIXES FOR ALTERNATE LUG CONFIGURATIONS:
 -45 FOR 45° BENT PAD
 -90 FOR 90° BENT PAD
 -FL FOR FLARED BARREL ENTRY
 -U FOR UNDRILLED PAD
 EXAMPLE: BLU-5S3-FL



NOTES:

- ALL DIMENSIONS IN INCHES UNLESS OTHERWISE SPECIFIED
- SEE INSTALLATION SHEET FOR WIRE SIZE AND TOOLING RECOMMENDATIONS
- TIN-PLATED TO INHIBIT CORROSION
- RATED FOR COPPER CONDUCTORS ONLY
- BEVELED ENTRY FOR EASY CABLE INSERTION
- INSPECTION WINDOW TO ENSURE FULL CABLE INSERTION
- CONNECTORS ARE SUITABLE FOR VOLTAGES UP TO 35 KV
- FOR APPLICATIONS GREATER THAN 2000 VOLTS, CONSULT CABLE MANUFACTURER FOR VOLTAGE STRESS RELIEF INSTRUCTIONS
- CONNECTORS ARE UL LISTED PER UL486A-B AND CSA CERTIFIED PER C22.2 NO.65 FOR POWER APPLICATIONS UP TO 90°C
- CONNECTORS ARE UL LISTED FOR GROUNDING, BONDING, AND DIRECT BURIAL APPLICATIONS PER UL467
- CONNECTORS ARE CSA CERTIFIED FOR GROUNDING, BONDING, AND DIRECT BURIAL APPLICATIONS PER C22.2 NO.41



NO.	ECN	DATE
REVISIONS		

X		COPPER TUBING	
QTY.	PT.	NAME OR DESCRIPTION	
		PENN-CRIMP LUG	
		for	
		5 AWG COPPER CONDUCTORS	
REF. DWG'S: 2H03-47604, 2H03-47605, 5H03-96802, 5H03-96803		H:\2H03\BLU-5S	
DRAWN BY: DT		DATE: 2/22/2023	CHK'D: QJB
SCALE: 3:1		INTERPRET PER ASME Y14.5-2009	
SIZE: B		FILE: 2H03	
SEE TABLE		DWG. NO.	REV.
CAT. NO.		BLU-5S	-
229 WATERFORD STREET EDINBORO, PA 16412 USA			