


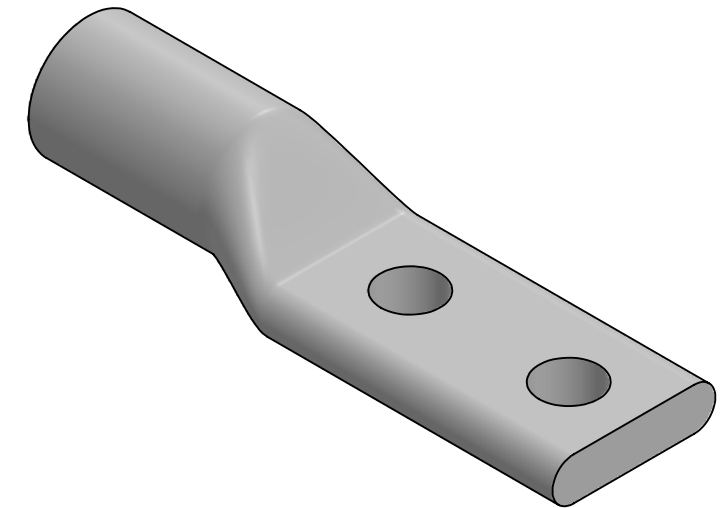
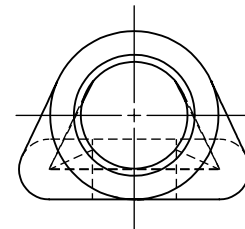
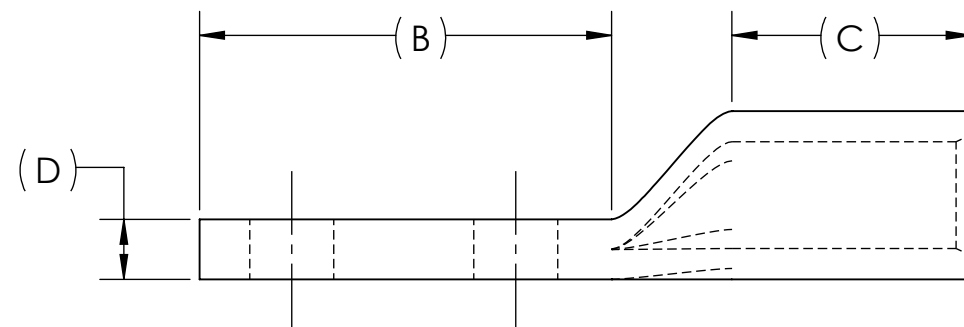
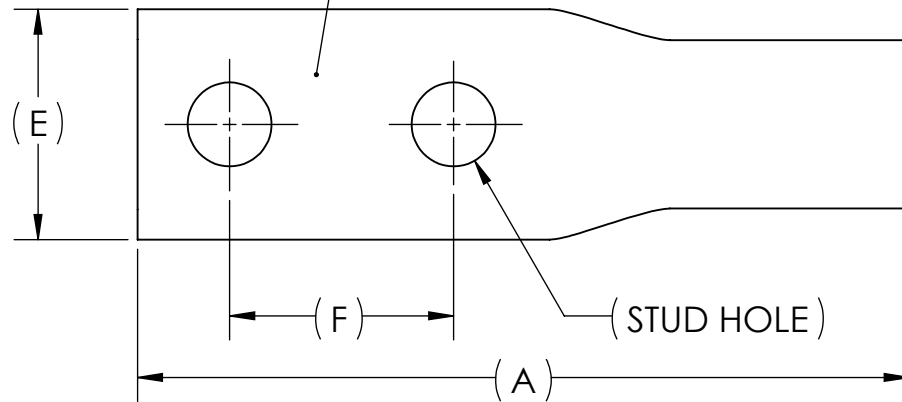
DWG. NO. **BLUA-050D** REV. **-**

REV.	CAT. NO.	SUFFIX	STUD HOLE	DIMENSIONS						APPROX. WEIGHT (LB)	STRIP LENGTH
				A	B	C	D	E	F		
04	BLUA-050D1	D1	3/8	4.88	2.06	1.88	.47	1.80	1.00	1.252	2.06
07	BLUA-050D2	D2	1/2	5.94	3.13	1.88	.46	1.79	1.75	1.477	
07	BLUA-050D	D	5/8	6.03	3.22	1.87	.47	1.80	1.75	1.454	

METAL STAMP TO READ:

1. 500
2. AL9CU
3. "SUFFIX"
4. "STUD HOLE"
5. 
6. 

INK STAMP REFERENCE




NOTES:

1. ALL DIMENSIONS IN INCHES UNLESS OTHERWISE SPECIFIED
2. SEE INSTALLATION SHEET FOR WIRE SIZE AND TOOLING RECOMMENDATIONS
3. TIN-PLATED AND FACTORY PREFILLED WITH OXIDE INHIBITOR
4. RATED FOR ALUMINUM AND COPPER CONDUCTORS UP TO 90°C
5. BEVELED ENTRY FOR EASY CABLE INSERTION
6. END CAPS PROVIDED TO PREVENT FOREIGN MATERIALS FROM ENTERING AND CONTAMINATING THE CONNECTOR PRIOR TO USE
7. CONNECTORS ARE SUITABLE FOR VOLTAGES UP TO 35 KV
8. FOR APPLICATIONS GREATER THAN 2000 VOLTS, CONSULT CABLE MANUFACTURER FOR VOLTAGE STRESS RELIEF INSTRUCTIONS
9. CONNECTORS ARE UL LISTED PER UL486A-B AND CSA CERTIFIED PER C22.2 NO.65 FOR POWER APPLICATIONS UP TO 90°C



NO.	ECN	DATE
REVISIONS		

		ALUMINUM TUBING	
QTY.	PT.	NAME OR DESCRIPTION	
		PENN-CRIMP LUG for 500 MCM ALUMINUM AND COPPER CONDUCTORS	
		REF. DWG'S: 4H29-43957, 4H29-42951, 4H29-34349 H:\4H29\BLUA-050D	
SEE TABLE CAT. NO.			
		229 WATERFORD STREET EDINBORO, PA 16412 USA	
		DRAWN BY: DT	DATE: 7/3/2023
		SCALE: 2:3	INTERPRET PER ASME Y14.5-2009
		SIZE: B	FILE: 4H29
		DWG. NO. <b>BLUA-050D</b>	REV. <b>-</b>