

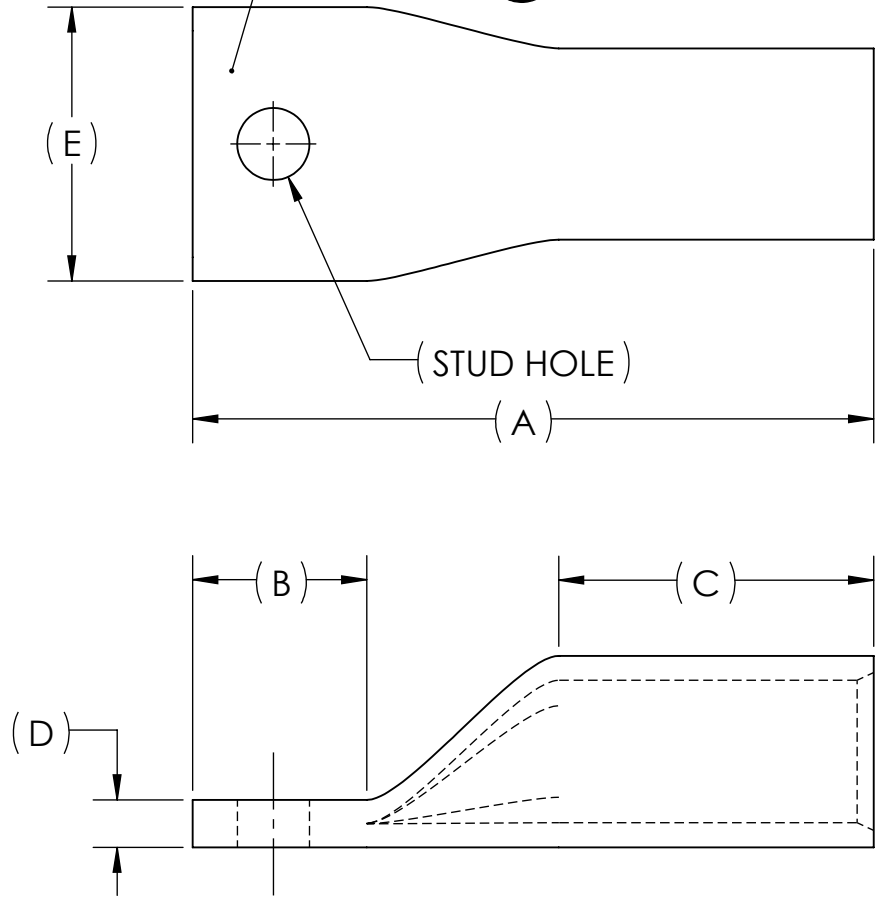
DWG. NO. **BLUA-090S** REV. -

| REV. | CAT. NO. | SUFFIX | STUD HOLE | DIMENSIONS | | | | | APPROX. WEIGHT (LB) | STRIP LENGTH |
|------|------------|--------|-----------|------------|------|------|-----|------|---------------------|--------------|
| | | | | A | B | C | D | E | | |
| - | BLUA-090S | S | 1/2 | 5.32 | 1.36 | 2.46 | .37 | 2.14 | 1.294 | 2.56 |
| - | BLUA-090S1 | S1 | 5/8 | 5.82 | 1.86 | 2.46 | .37 | 2.14 | 1.402 | |

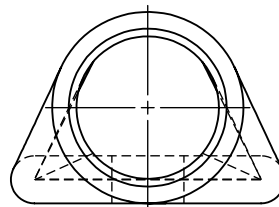
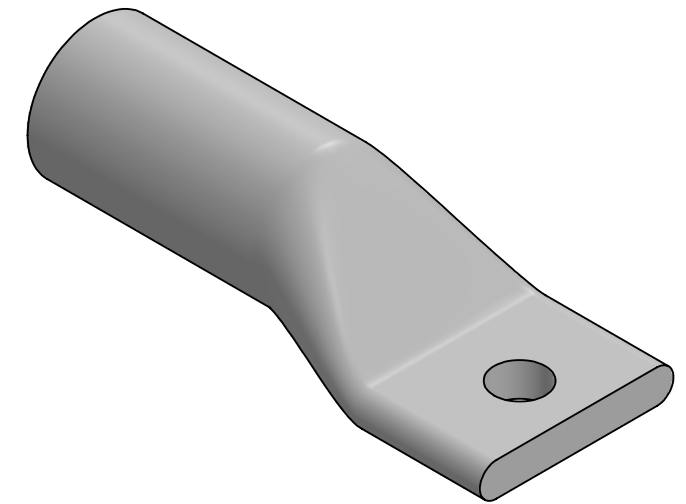
METAL STAMP TO READ:

- 600-900 AL
- 600 CU
- AL9CU
- "SUFFIX"
- "STUD HOLE"
- 
- 

THE FOLLOWING DIELESS COMPRESSION TOOLS ARE APPROVED TO BE USED ON 600-900 MCM ALUMINUM AND 600 MCM COPPER: TPU-6FT, TPU-6FTB, TPU-6FTH, HDT-1000 AND HDT-1000B
THE BURNDY 303 DIE IS FOR USE WITH 900 MCM ALUMINUM ONLY
SEE INSTALLATION SHEET FOR ALL OTHER WIRE SIZE AND TOOLING RECOMMENDATIONS



INK STAMP REFERENCE




NOTES:

- ALL DIMENSIONS IN INCHES UNLESS OTHERWISE SPECIFIED
- TIN-PLATED AND FACTORY PREFILLED WITH OXIDE INHIBITOR
- RATED FOR ALUMINUM AND COPPER CONDUCTORS UP TO 90°C
- BEVELED ENTRY FOR EASY CABLE INSERTION
- END CAPS PROVIDED TO PREVENT FOREIGN MATERIALS FROM ENTERING AND CONTAMINATING THE CONNECTOR PRIOR TO USE
- CONNECTORS ARE SUITABLE FOR VOLTAGES UP TO 35 KV
- FOR APPLICATIONS GREATER THAN 2000 VOLTS, CONSULT CABLE MANUFACTURER FOR VOLTAGE STRESS RELIEF INSTRUCTIONS
- CONNECTORS ARE UL LISTED PER UL486A-B AND CSA CERTIFIED PER C22.2 NO.65 FOR POWER APPLICATIONS UP TO 90°C



| NO. | ECN | DATE |
|-----------|-----|------|
| REVISIONS | | |

| QTY. | PT. | NAME OR DESCRIPTION |
|------|-----|---|
| | X | ALUMINUM TUBING |
| | | PENN-CRIMP LUG for 600-900 MCM ALUMINUM AND 600 MCM COPPER CONDUCTORS |
| | | REF. DWG'S: 4H29-55938, 4H29-55939 H:\4H29\BLUA-090S |
| | |  DRAWN BY: DT DATE: 6/29/2023 CHK'D: QJB |
| | | 229 WATERFORD STREET EDINBORO, PA 16412 USA |
| | | SCALE: 2:3 INTERPRET PER ASME Y14.5-2009 FILE: 4H29 |
| | | SIZE: B DWG. NO. BLUA-090S REV. - |