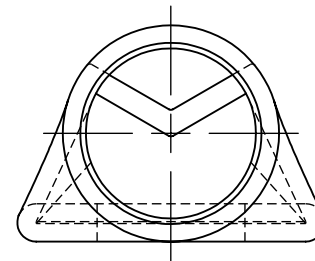
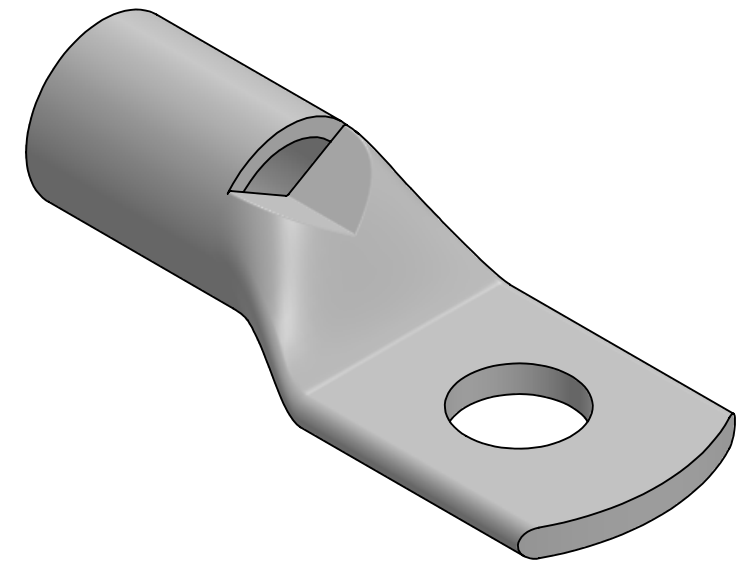


CAT. NO.	STUD HOLE	DIMENSIONS					APPROX. WEIGHT (LB)
		A	B	C	D	E	
BLY25-L1	1/4	2.05	.93	.68	.10	.80	0.052
BLY25-L2	5/16	2.05	.93	.68	.10	.80	0.052
BLY25-L	3/8	2.05	.93	.68	.10	.80	0.050
BLY25-L3	1/2	2.09	1.01	.68	.10	.80	0.049
BLY25-L4	5/8	2.31	1.16	.68	.10	.86	0.053
BLY25-L6	7/16	2.05	.93	.68	.10	.80	0.049

INSTALLATION TOOLING						
MECHANICAL		HYDRAULIC			T & B	
BURNDY	PENN-UNION DIELESS MECHANICAL TOOL	PENN-UNION	DIE INDEX	BURNDY Y35 Y39	TOOL: 13642	
NON-RATCHET: MY29-11	TDM-250XF	TPU-12B	43	UV25L NEST Y34PLA INDENTOR (1)CRIMP	DIE CAT. NO. 11786M	DIE MS90485-01



- NOTES:
- ALL DIMENSIONS IN INCHES UNLESS OTHERWISE SPECIFIED
 - TIN-PLATED TO INHIBIT CORROSION
 - RATED FOR COPPER CONDUCTORS ONLY
 - BEVELED ENTRY FOR EASY CABLE INSERTION
 - INSPECTION WINDOW TO ENSURE FULL CABLE INSERTION
 - ROUNDED TONGUE ACCOMMODATES FULL WASHER CLEARANCE AND ADJUSTABLE LUG ORIENTATION
 - CONNECTORS ARE SUITABLE FOR VOLTAGES UP TO 35 KV
 - FOR APPLICATIONS GREATER THAN 2000 VOLTS, CONSULT CABLE MANUFACTURER FOR VOLTAGE STRESS RELIEF INSTRUCTIONS
 - CONNECTORS ARE UL LISTED PER UL486A-B AND CSA CERTIFIED PER C22.2 NO.65 FOR POWER APPLICATIONS UP TO 90°C



NO.	ECN	DATE
10	11639	3/8/2016
9	11516	11/7/2014
8	11227	11/21/2011
7	ADD PG. 2	5/28/1997
6	9995	9/18/1996
5	ADD GR. 06	12/13/1995
4	9818H	4/13/1995
3	9818G	4/13/1995
2	9688	2/21/1994
1	9347	8/16/1991

QTY.	PT.	COPPER TUBING	
NAME OR DESCRIPTION			
PENN-CRIMP LUG			
for			
1/0 AWG AND AN 1/0			
REF. DWG'S: 2H19-54306		H:\2H19\BLY25	
DRAWN BY: DT		DATE: 6/19/2023	CHK'D: QJB
SCALE: 2:1		INTERPRET PER ASME Y14.5-2009	
FILE: 2H19		DWG. NO. BLY25	
REV. 10		229 WATERFORD STREET EDINBORO, PA 16412 USA	