

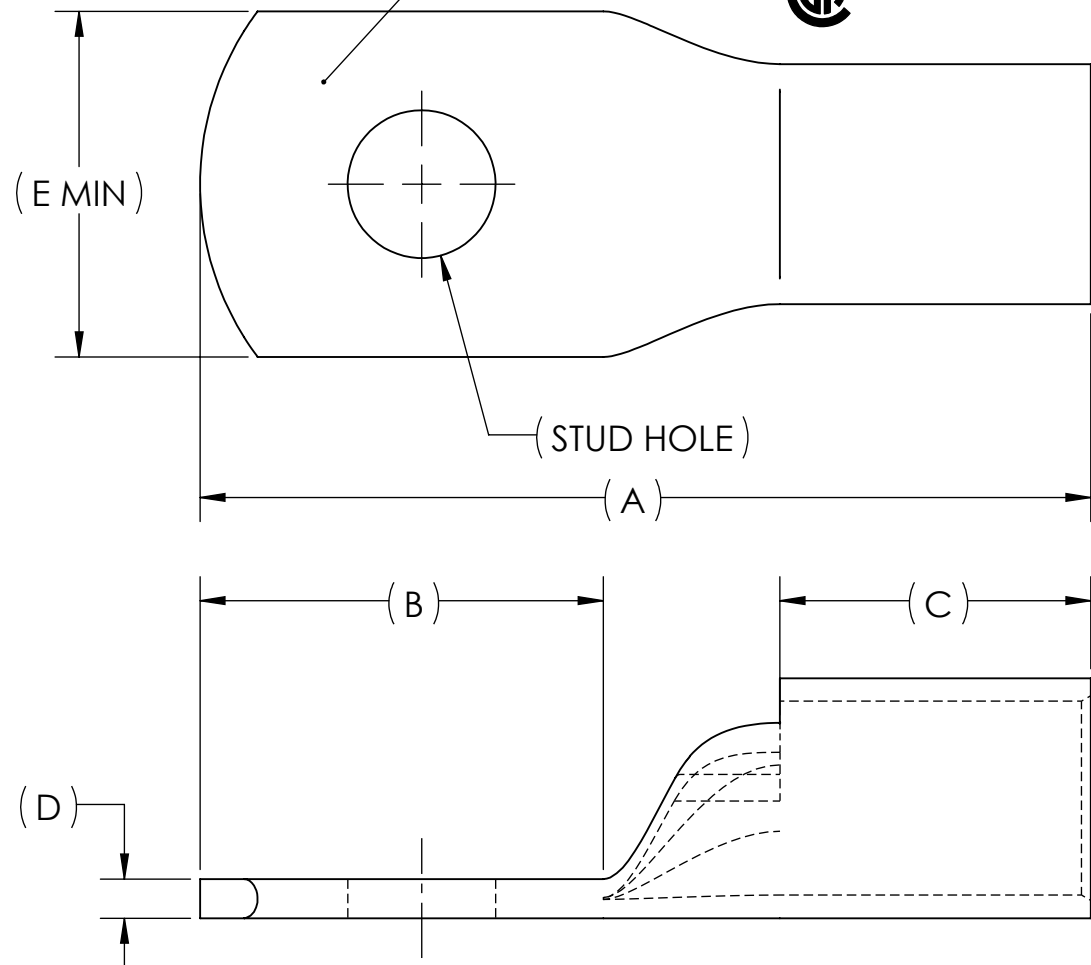


METAL STAMP TO READ:

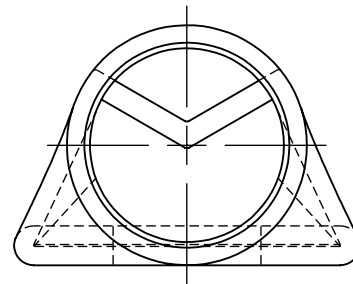
- 2, 4, 5 OPTIONAL
1. PU
2. 2/0 STR
3. "CAT. NO."

4. 
5. 



| CAT. NO.  | STUD HOLE | DIMENSIONS |      |     |     |     | APPROX. WEIGHT (LB) |
|-----------|-----------|------------|------|-----|-----|-----|---------------------|
|           |           | A          | B    | C   | D   | E   |                     |
| BLY26-L1  | 1/4       | 2.32       | 1.05 | .81 | .10 | .90 | 0.069               |
| BLY26-L2  | 5/16      | 2.32       | 1.05 | .81 | .10 | .90 | 0.068               |
| BLY26-L   | 3/8       | 2.32       | 1.05 | .81 | .10 | .90 | 0.067               |
| BLY26-L3  | 1/2       | 2.32       | 1.05 | .81 | .10 | .90 | 0.064               |
| BLY26-L12 | 5/8       | 2.53       | 1.28 | .81 | .10 | .90 | 0.066               |
| BLY26-L4  | 7/16      | 2.32       | 1.05 | .81 | .10 | .90 | 0.065               |

| INSTALLATION TOOLING |                                    |            |           |                       |                     |                |
|----------------------|------------------------------------|------------|-----------|-----------------------|---------------------|----------------|
| MECHANICAL           |                                    | HYDRAULIC  |           |                       | T & B               |                |
| BURNDY               | PENN-UNION DIELESS MECHANICAL TOOL | PENN-UNION | DIE INDEX | BURNDY Y35 Y39        | TOOL: 13642         |                |
| NON-RATCHET: MY29-11 | TDM-250XF                          | TPU-12B    | 13        | U26RT ROUND (1) CRIMP | DIE CAT. NO. 11786M | DIE MS90485-02 |



NOTES:

1. ALL DIMENSIONS IN INCHES UNLESS OTHERWISE SPECIFIED
2. TIN-PLATED TO INHIBIT CORROSION
3. RATED FOR COPPER CONDUCTORS ONLY
4. BEVELED ENTRY FOR EASY CABLE INSERTION
5. INSPECTION WINDOW TO ENSURE FULL CABLE INSERTION
6. ROUNDED TONGUE ACCOMMODATES FULL WASHER CLEARANCE AND ADJUSTABLE LUG ORIENTATION
7. CONNECTORS ARE SUITABLE FOR VOLTAGES UP TO 35 KV
8. FOR APPLICATIONS GREATER THAN 2000 VOLTS, CONSULT CABLE MANUFACTURER FOR VOLTAGE STRESS RELIEF INSTRUCTIONS
9. CONNECTORS ARE UL LISTED PER UL486A-B AND CSA CERTIFIED PER C22.2 NO.65 FOR POWER APPLICATIONS UP TO 90°C



| NO. | ECN        | DATE       |
|-----|------------|------------|
| 8   | 11516      | 11/7/2014  |
| 7   | 11227      | 11/21/2011 |
| 6   | 11169      | 6/17/2011  |
| 5   | 9995       | 9/18/1996  |
| 4   | ADD GR. 06 | 12/13/1995 |
| 3   | 98181      | 4/13/1995  |
| 2   | 9688       | 2/21/1994  |
| 1   | 9347       | 8/16/1991  |

| QTY. | PT. | NAME OR DESCRIPTION                         |
|------|-----|---|
| X    |     | COPPER TUBING                               |
|      |     | PENN-CRIMP LUG<br>for<br>2/0 AWG AND AN 2/0 |

REF. DWG'S: 2H19-54307 H:\2H19\BLY26

|              |                               |               |
|--------------|-------------------------------|---------------|
| DRAWN BY: DT | DATE: 6/19/2023               | CHK'D: QJB    |
| SCALE: 2:1   | INTERPRET PER ASME Y14.5-2009 | FILE: 2H19    |
| SIZE: B      | DWG. NO. <b>BLY26</b>         | REV. <b>8</b> |

229 WATERFORD STREET  
EDINBORO, PA 16412 USA