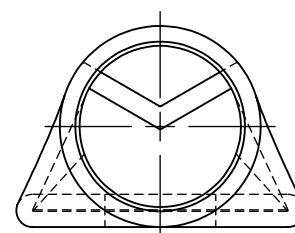
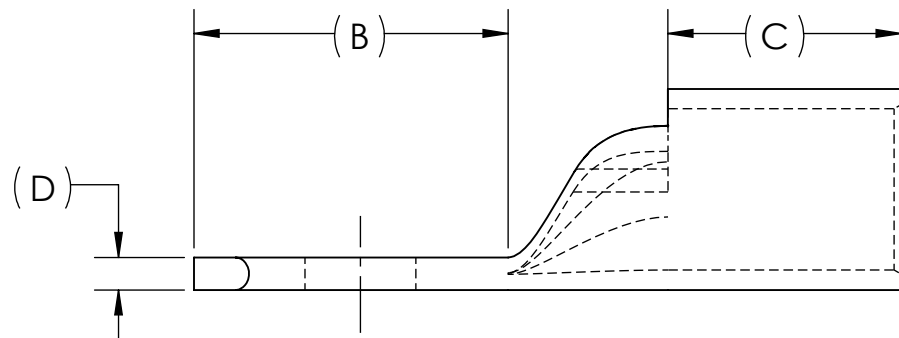
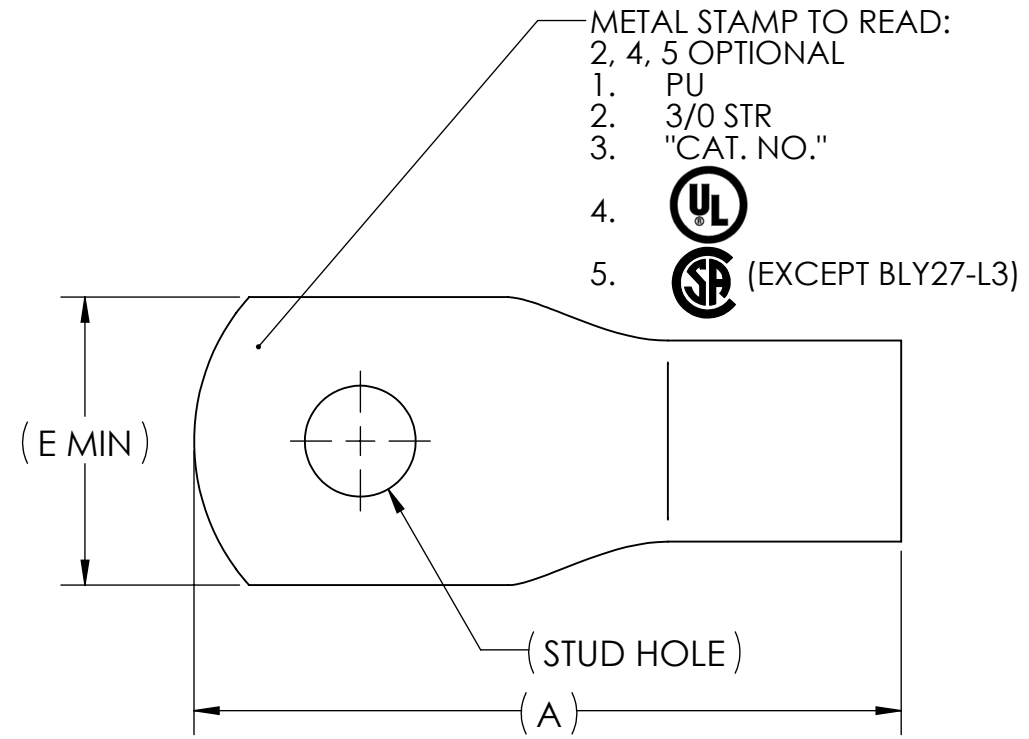


\*NOT CSA CERTIFIED

CAT. NO.	STUD HOLE	DIMENSIONS					APPROX. WEIGHT (LB)
		A	B	C	D	E	
BLY27-L	3/8	2.46	1.09	.81	.11	1.00	0.089
BLY27-L1	1/2	2.46	1.09	.81	.11	1.00	0.086
BLY27-L15	5/8	2.63	1.28	.81	.11	1.01	0.088
BLY27-L3*	1/4	2.46	1.09	.81	.11	1.01	0.092
BLY27-L2	5/16	2.46	1.09	.81	.11	1.01	0.091
BLY27-L6	7/16	2.63	1.09	.81	.11	1.01	0.095

INSTALLATION TOOLING						
MECHANICAL		HYDRAULIC			T & B	
BURNDY	PENN-UNION DIELESS MECHANICAL TOOL	PENN-UNION	DIE INDEX	BURNDY	TOOL: 13642	
NON-RATCHET: MY29-11	TDM-250XF	TPU-12B	14	Y35 Y39 U27RT ROUND (1) CRIMP	DIE CAT. NO.	DIE MS90485-
					11788M	-03



- NOTES:
- ALL DIMENSIONS IN INCHES UNLESS OTHERWISE SPECIFIED
  - TIN-PLATED TO INHIBIT CORROSION
  - RATED FOR COPPER CONDUCTORS ONLY
  - BEVELED ENTRY FOR EASY CABLE INSERTION
  - INSPECTION WINDOW TO ENSURE FULL CABLE INSERTION
  - ROUNDED TONGUE ACCOMMODATES FULL WASHER CLEARANCE AND ADJUSTABLE LUG ORIENTATION
  - CONNECTORS ARE SUITABLE FOR VOLTAGES UP TO 35 KV
  - FOR APPLICATIONS GREATER THAN 2000 VOLTS, CONSULT CABLE MANUFACTURER FOR VOLTAGE STRESS RELIEF INSTRUCTIONS
  - CONNECTORS ARE UL LISTED PER UL486A-B AND CSA CERTIFIED PER C22.2 NO.65 FOR POWER APPLICATIONS UP TO 90°C



NO.	ECN	DATE
6	11227	11/21/2011
5	9995	9/18/1996
4	9818J	4/13/1995
3	ADD NEW GR. TO DWG	6/15/1994
2	9688	2/21/1994
1	9347	8/16/1991

QTY.	PT.	NAME OR DESCRIPTION
	X	COPPER TUBING
		PENN-CRIMP LUG for 3/0 AWG AND AN 3/0
REF. DWG'S: 2H19-54308		H:\2H19\BLY27
DRAWN BY: DT		DATE: 6/19/2023
SCALE: 3:2		CHK'D: QJB
SIZE: B		INTERPRET PER ASME Y14.5-2009
DWG. NO. <b>BLY27</b>		FILE: 2H19
REV. <b>6</b>		

