

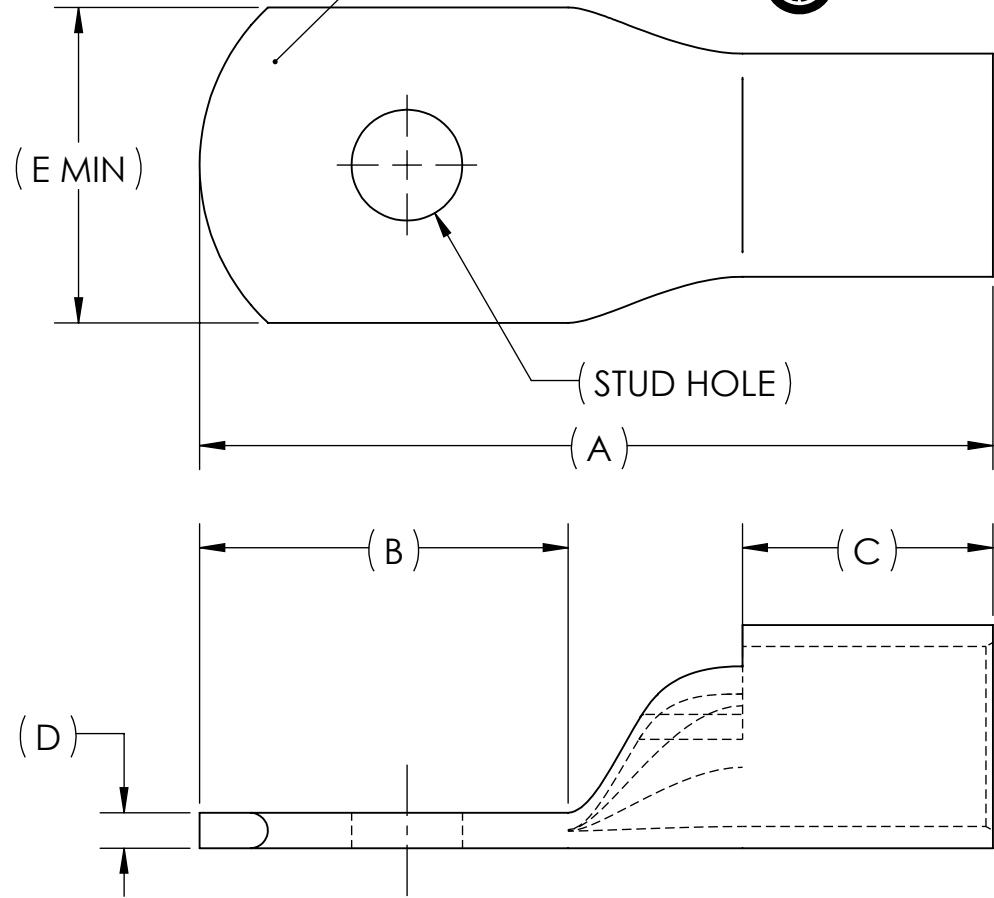
*NOT CSA CERTIFIED

CAT. NO.	STUD HOLE	DIMENSIONS					APPROX. WEIGHT (LB)
		A	B	C	D	E	
BLY28-L	3/8	2.76	1.28	.87	.12	1.10	0.120
BLY28-L12	1/2	2.76	1.28	.87	.12	1.10	0.117
BLY28-L13	5/8	2.76	1.28	.87	.12	1.10	0.112
BLY28-L14	3/4	2.96	1.44	.87	.12	1.20	0.120
BLY28-L1*	1/4	2.76	1.28	.87	.12	1.10	0.123
BLY28-L2	5/16	2.76	1.28	.87	.12	1.10	0.122
BLY28-L6	7/16	2.76	1.28	.87	.12	1.10	0.119
BLY28-L15	7/8	2.96	1.44	.87	.12	1.20	0.115

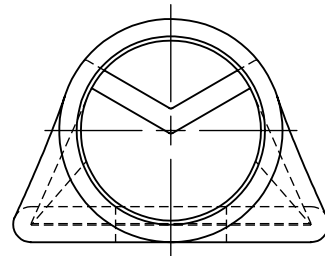
METAL STAMP TO READ:

- 2, 4, 5 OPTIONAL
1. PU
2. 4/0 STR
3. "CAT. NO."

4.  (EXCEPT BLY28-L1)
5.  (EXCEPT BLY28-L1)



INSTALLATION TOOLING						
MECHANICAL		HYDRAULIC			T & B	
BURNDY	PENN-UNION DIELESS MECHANICAL TOOL	PENN-UNION	DIE INDEX	BURNDY Y35 Y39	TOOL: 13642	
NON-RATCHET: MY29-11	TDM-250XF	TPU-12B	15	U28RT ROUND (1) CRIMP	DIE CAT. NO. 11789M	DIE MS90485-04



NOTES:

1. ALL DIMENSIONS IN INCHES UNLESS OTHERWISE SPECIFIED
2. TIN-PLATED TO INHIBIT CORROSION
3. RATED FOR COPPER CONDUCTORS ONLY
4. BEVELED ENTRY FOR EASY CABLE INSERTION
5. INSPECTION WINDOW TO ENSURE FULL CABLE INSERTION
6. ROUNDED TONGUE ACCOMMODATES FULL WASHER CLEARANCE AND ADJUSTABLE LUG ORIENTATION
7. CONNECTORS ARE SUITABLE FOR VOLTAGES UP TO 35 KV
8. FOR APPLICATIONS GREATER THAN 2000 VOLTS, CONSULT CABLE MANUFACTURER FOR VOLTAGE STRESS RELIEF INSTRUCTIONS
9. CONNECTORS ARE UL LISTED PER UL486A-B AND CSA CERTIFIED PER C22.2 NO.65 FOR POWER APPLICATIONS UP TO 90°C



NO.	ECN	DATE
6	11227	11/21/2011
5	9995	9/18/1996
4	ADD NEW GR. TO DWG	6/15/1994
3	9688	2/21/1994
2	9421	11/27/1991
1	9347	8/16/1991

QTY.	PT.	NAME OR DESCRIPTION
	X	COPPER TUBING
		PENN-CRIMP LUG for 4/0 AWG AND AN 4/0
REF. DWG'S: 2H19-54309		H:\2H19\BLY28
DRAWN BY: DT		DATE: 6/19/2023
SCALE: 3:2		CHK'D: QJB
SIZE: B		INTERPRET PER ASME Y14.5-2009
DWG. NO. BLY28		FILE: 2H19
REV. 6		