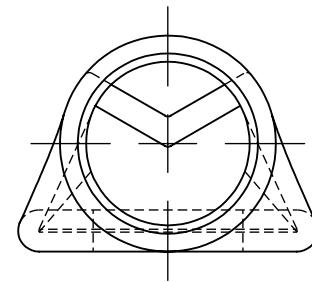
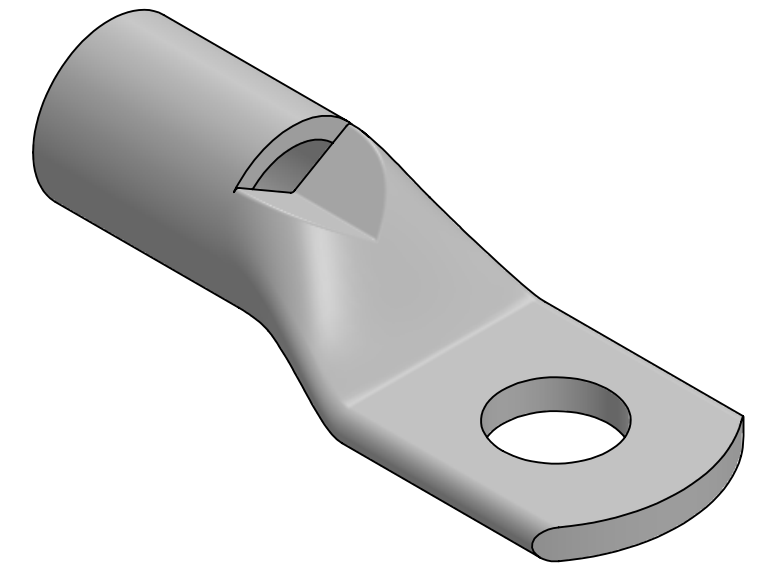


CAT. NO.	STUD HOLE	DIMENSIONS					APPROX. WEIGHT (LB)
		A	B	C	D	E	
BLY4C-L3	#10	1.40	.58	.45	.07	.52	0.017
BLY4C-L	1/4	1.40	.58	.45	.07	.52	0.017
BLY4C-L4	5/16	1.49	.66	.50	.07	.52	0.017
BLY4C-L2	3/8	1.49	.66	.50	.07	.61	0.018
BLY4C-L5	1/2	1.72	.88	.50	.07	.71	0.022

INSTALLATION TOOLING						
MECHANICAL		HYDRAULIC			T & B	
BURNDY	PENN-UNION DIELESS MECHANICAL TOOL	PENN-UNION	DIE INDEX	BURNDY Y35 Y39	TOOL: 13642	
NON-RATCHET: MY29-11	TDM-250XF	TPU-12B	40	UV4L NEST Y34PLA INDENTOR (1)CRIMP	DIE CAT. NO. 11783M	DIE MS90485- -4



NOTES:

- ALL DIMENSIONS IN INCHES UNLESS OTHERWISE SPECIFIED
- TIN-PLATED TO INHIBIT CORROSION
- RATED FOR COPPER CONDUCTORS ONLY
- BEVELED ENTRY FOR EASY CABLE INSERTION
- INSPECTION WINDOW TO ENSURE FULL CABLE INSERTION
- ROUNDED TONGUE ACCOMMODATES FULL WASHER CLEARANCE AND ADJUSTABLE LUG ORIENTATION
- CONNECTORS ARE SUITABLE FOR VOLTAGES UP TO 35 KV
- FOR APPLICATIONS GREATER THAN 2000 VOLTS, CONSULT CABLE MANUFACTURER FOR VOLTAGE STRESS RELIEF INSTRUCTIONS
- CONNECTORS ARE UL LISTED PER UL486A-B AND CSA CERTIFIED PER C22.2 NO.65 FOR POWER APPLICATIONS UP TO 90°C



NO.	ECN	DATE
7	11639	3/8/2016
6	11516	11/5/2014
5	11227	11/21/2011
4	9995	9/18/1996
3	9818A	4/13/1995
2	9688	2/21/1994
1	9347	8/16/1991

QTY.	PT.	NAME OR DESCRIPTION
	X	COPPER TUBING
		PENN-CRIMP LUG for 4 AWG AND AN 4
REF. DWG'S: 2H19-54303		H:\2H19\BLY4
DRAWN BY: DT		DATE: 6/19/2023
SCALE: 3:1		INTERPRET PER ASME Y14.5-2009
SIZE: B		FILE: 2H19
DWG. NO. <b>BLY4</b>		REV. <b>7</b>