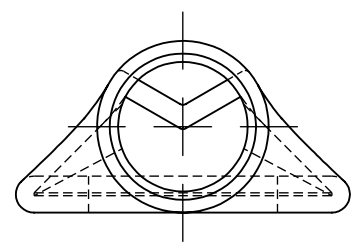
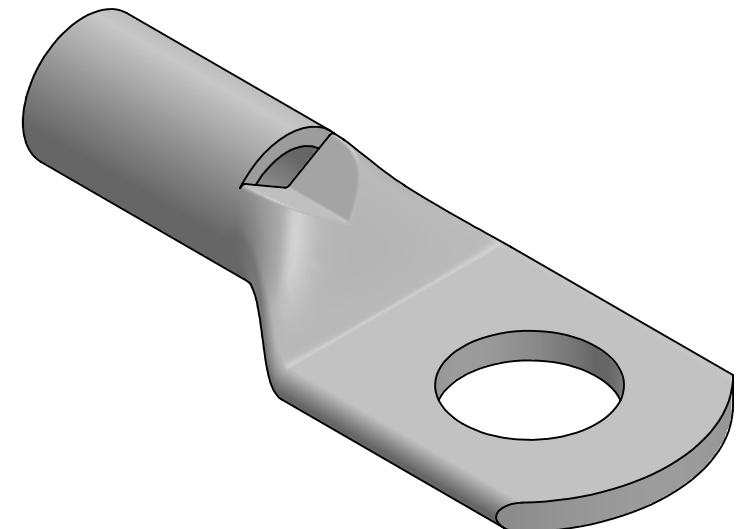


CAT. NO.	STUD HOLE	DIMENSIONS					APPROX. WEIGHT (LB)
		A	B	C	D	E	
BLY6C-L1	#10	1.31	.54	.39	.06	.43	0.011
BLY6C-L	1/4	1.31	.54	.39	.06	.43	0.010
BLY6C-L4	5/16	1.44	.67	.45	.06	.58	0.013
BLY6C-L2	3/8	1.44	.67	.50	.06	.58	0.013
BLY6C-L10	1/2	1.68	.88	.50	.06	.70	0.016

INSTALLATION TOOLING						
MECHANICAL		HYDRAULIC			T & B	
BURNDY	PENN-UNION DIELESS MECHANICAL TOOL	PENN-UNION	DIE INDEX	BURNDY Y35 Y39	TOOL: 13642	
NON-RATCHET: MY29-11	TDM-250XF	TPU-12B	39	UV6L NEST Y34PLA INDENTOR (1)CRIMP	DIE CAT. NO. 11782M	DIE MS90485-6



- NOTES:
- ALL DIMENSIONS IN INCHES UNLESS OTHERWISE SPECIFIED
 - TIN-PLATED TO INHIBIT CORROSION
 - RATED FOR COPPER CONDUCTORS ONLY
 - BEVELED ENTRY FOR EASY CABLE INSERTION
 - INSPECTION WINDOW TO ENSURE FULL CABLE INSERTION
 - ROUNDED TONGUE ACCOMMODATES FULL WASHER CLEARANCE AND ADJUSTABLE LUG ORIENTATION
 - CONNECTORS ARE SUITABLE FOR VOLTAGES UP TO 35 KV
 - FOR APPLICATIONS GREATER THAN 2000 VOLTS, CONSULT CABLE MANUFACTURER FOR VOLTAGE STRESS RELIEF INSTRUCTIONS
 - CONNECTORS ARE UL LISTED PER UL486A-B AND CSA CERTIFIED PER C22.2 NO.65 FOR POWER APPLICATIONS UP TO 90°C



NO.	ECN	DATE	QTY.	PT.	NAME OR DESCRIPTION
9	11639	3/9/2016			COPPER TUBING
8	11516	11/4/2014			
7	10078	6/11/1997			
6	10006	10/30/1996			
5	9995	9/18/1996			
4	9963	6/24/1996			
3	9818B	4/13/1995			
2	9688	2/21/1994			
1	9347	8/16/1991			
REVISIONS					

REF. DWG'S: 2H19-54302		H:\2H19\BLY6	
DRAWN BY: DT		DATE: 6/19/2023	CHK'D: QJB
SCALE: 3:1		INTERPRET PER ASME Y14.5-2009	
SIZE: B	DWG. NO. BLY6	FILE: 2H19	REV. 9
 229 WATERFORD STREET EDINBORO, PA 16412 USA			