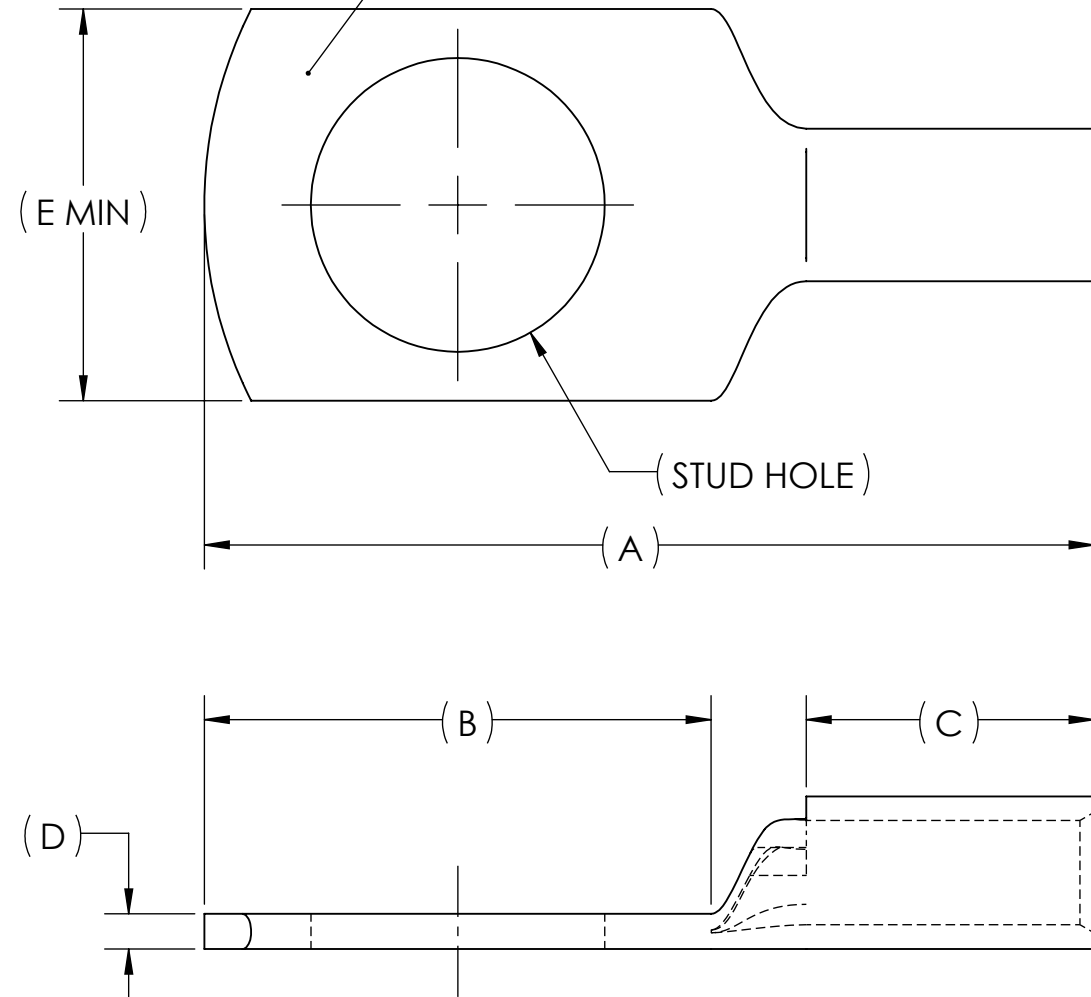
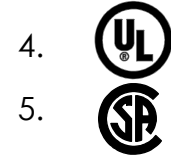


DWG. NO. **BLY8** REV. **9**

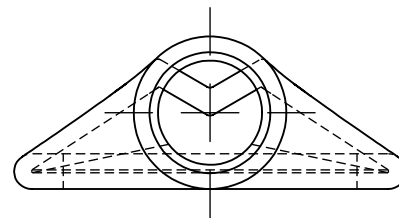
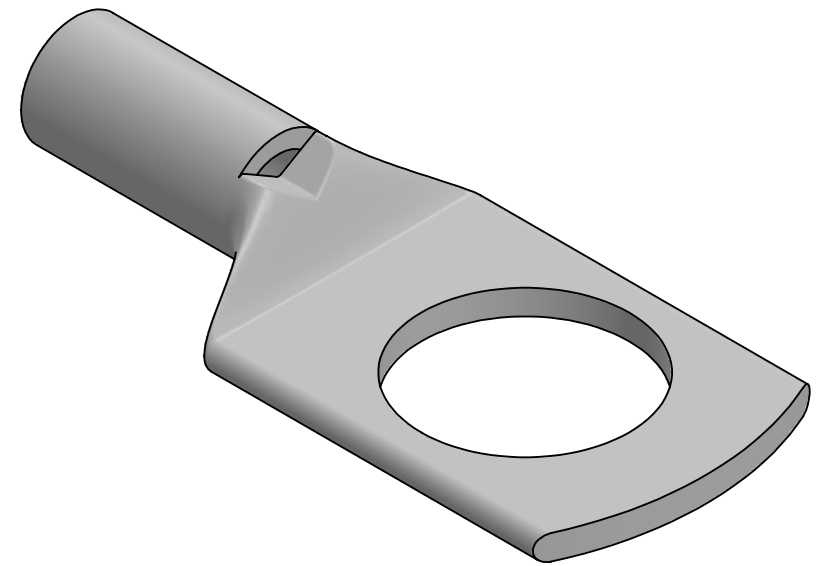
METAL STAMP TO READ:

- 2, 4, 5 OPTIONAL
- 1. PU
- 2. 8 STR
- 3. "CAT. NO."



CAT. NO.	STUD HOLE	DIMENSIONS					APPROX. WEIGHT (LB)
		A	B	C	D	E	
BLY8C-L14	#8	1.15	.47	.37	.06	.38	0.009
BLY8C-L	#10	1.15	.47	.37	.06	.38	0.009
BLY8C-L1	1/4	1.22	.51	.37	.06	.38	0.009
BLY8C-L2	5/16	1.30	.71	.50	.06	.55	0.011
BLY8C-L3	3/8	1.30	.71	.50	.06	.55	0.010
BLY8C-L4	1/2	1.55	.88	.50	.06	.68	0.014

INSTALLATION TOOLING						
MECHANICAL		HYDRAULIC			T & B	
BURNDY	PENN-UNION DIELESS MECHANICAL TOOL	PENN-UNION	DIE INDEX	BURNDY Y35 Y39	TOOL: 13642	
NON-RATCHET: MY29-11	TDM-250XF	TPU-12B	38	UV8L NEST Y34PLA INDENTOR (1)CRIMP	DIE CAT. NO. 11781M	DIE MS90485-8



NOTES:

1. ALL DIMENSIONS IN INCHES UNLESS OTHERWISE SPECIFIED
2. TIN-PLATED TO INHIBIT CORROSION
3. RATED FOR COPPER CONDUCTORS ONLY
4. BEVELED ENTRY FOR EASY CABLE INSERTION
5. INSPECTION WINDOW TO ENSURE FULL CABLE INSERTION
6. ROUNDED TONGUE ACCOMMODATES FULL WASHER CLEARANCE AND ADJUSTABLE LUG ORIENTATION
7. CONNECTORS ARE SUITABLE FOR VOLTAGES UP TO 35 KV
8. FOR APPLICATIONS GREATER THAN 2000 VOLTS, CONSULT CABLE MANUFACTURER FOR VOLTAGE STRESS RELIEF INSTRUCTIONS
9. CONNECTORS ARE UL LISTED PER UL486A-B AND CSA CERTIFIED PER C22.2 NO.65 FOR POWER APPLICATIONS UP TO 90°C



NO.	ECN	DATE
9	11806	11/15/2018
8	11639	3/8/2016
7	11516	10/30/2014
6	11227	11/16/2011
5	ADD PAGE3	12/5/1996
4	9995	9/17/1993
3	9818A	4/13/1995
2	9688	2/21/1994
1	9347	8/16/1991

X		COPPER TUBING	
QTY.	PT.	NAME OR DESCRIPTION	
		PENN-CRIMP LUG	
		for 8 AWG AND AN 8	
REF. DWG'S: 2H19-54301		H:\2H19\BLY8	
DRAWN BY: QJB		DATE: 6/13/2023	CHK'D: QJB
SCALE: 3:1		INTERPRET PER ASME Y14.5-2009	
FILE: 2H19		DWG. NO. BLY8	
REV. 9		PENNYUNION	
229 WATERFORD STREET		EDINBORO, PA 16412 USA	