

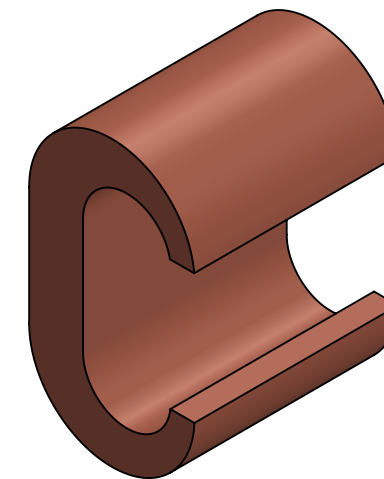
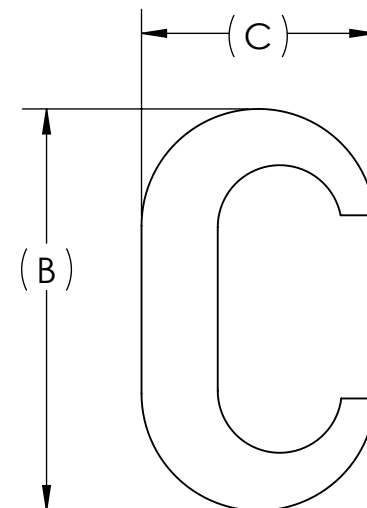
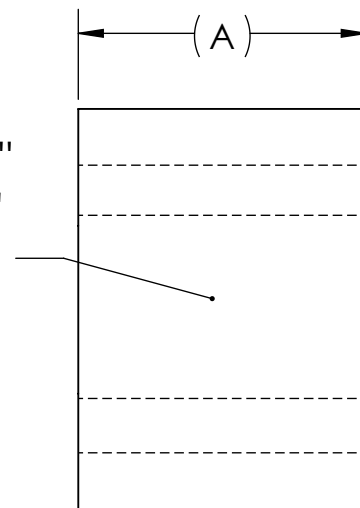


DWG. NO.	CCT SERIES	REV.	REV.	CATALOG NUMBER	CONDUCTOR RANGE		APPROXIMATE DIMENSIONS			WIRE STRIP LENGTH	APPROX. WEIGHT (LB)	INSTALLATION TOOLING*			
					RUN	TAP	A	B	C			PENN-UNION TOOL	DIE INDEX	NO. OF CRIMPS	
		03		CCT-46	6 SOL. - 4 AWG	6 SOL. - 6 AWG	.63	.76	.44	0.75	0.04	TPU-12B	C	1	
		03		CCT-44	6 SOL. - 4 AWG	4 SOL. - 4 AWG	.63	.81	.47	0.75	0.04				BG
		05		CCT-24	2 SOL. - 2 AWG	8 SOL. - 4 AWG	.75	.98	.61	0.88	0.08				C
		04		CCT-22	2 SOL. - 2 AWG	2 SOL. - 2 AWG	.75	1.05	.61	0.88	0.07				C
		08		CCT-2020	1/0 AWG - 2/0 AWG	1/0 AWG - 2/0 AWG	.94	1.35	.80	1.06	0.16				0
		06		CCT-4020	3/0 AWG - 4/0 AWG	1/0 AWG - 2/0 AWG	1.06	1.61	.99	1.19	0.29				D3
		05		CCT-4040	3/0 AWG - 4/0 AWG	3/0 AWG - 4/0 AWG	1.06	1.56	.99	1.19	0.25				D3

*HYDRAULIC TOOLING MUST BE USED FOR THESE CONNECTORS. CONSULT MFG. FOR ALTERNATE BURNDY TOOLS THAT WILL BE UL LISTED FOR GROUNDING ONLY

METAL STAMP TO READ:

1. PUC
2. "CATALOG NUMBER"
3. "RUN CONDUCTOR RANGE"
4. "TAP CONDUCTOR RANGE"
5. "DIE INDEX"
6. 
7. 
8. DB (OPTIONAL)



NOTES:

1. ALL DIMENSIONS IN INCHES UNLESS OTHERWISE SPECIFIED
2. FIGURE IS REPRESENTATIVE. EXACT COMPONENT FEATURES MAY VARY.
3. RATED FOR COPPER CLASS B AND C CONDUCTORS ONLY
4. USED FOR MAKING TAP OR PARALLEL CONNECTIONS
5. CONNECTORS ARE SUITABLE FOR VOLTAGES UP TO 35 KV
6. FOR APPLICATIONS GREATER THAN 2000 VOLTS, CONSULT CABLE MANUFACTURER FOR VOLTAGE STRESS RELIEF INSTRUCTIONS
7. CONNECTORS ARE UL LISTED PER UL486A-B FOR POWER APPLICATIONS UP TO 90°C
8. CONNECTORS ARE UL LISTED FOR GROUNDING, BONDING, AND DIRECT BURIAL APPLICATIONS PER UL467
9. CONNECTORS ARE CSA CERTIFIED PER CSA C22.2 No. 65 FOR POWER APPLICATIONS UP TO 90°C
10. CONNECTORS ARE CSA CERTIFIED PER CSA C22.2 No. 41 FOR GROUNDING, BONDING, AND DIRECT BURIAL



NO.	ECN	DATE
REVISIONS		

QTY.	PT.	NAME OR DESCRIPTION
	X	COPPER EXTRUSION
		C-TAP for COPPER CONDUCTORS
REF. DWG'S:		H:\2A12\CCT_C
DRAWN BY: NAK		DATE: 5/30/2023
SCALE: 2:1		CHK'D: QJB
SIZE: B		INTERPRET PER ASME Y14.5-2009
DWG. NO. CCT SERIES		FILE: 2A12
229 WATERFORD STREET EDINBORO, PA 16412 USA		REV. -