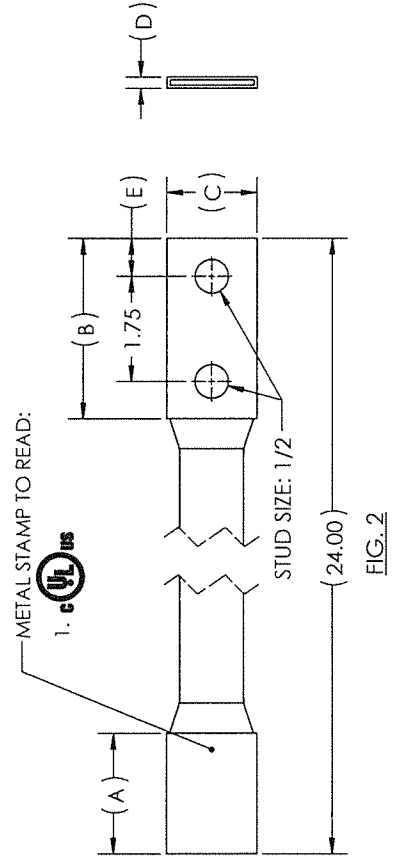
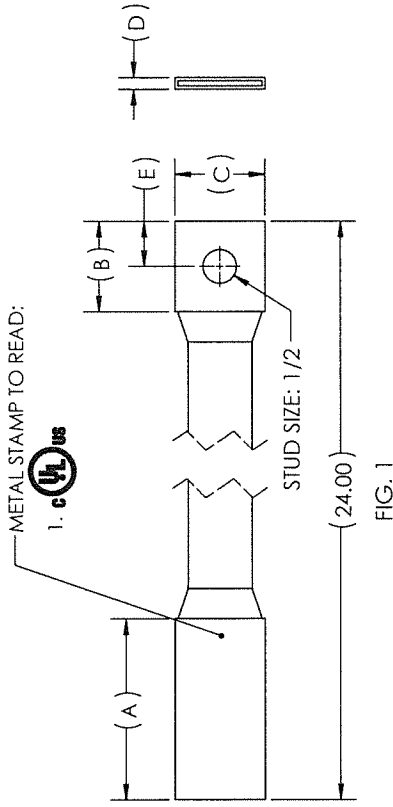


REV. -
GFXB SERIES

REV	CATALOG NUMBER	AMPERAGE RATINGS	CIRCULAR MILS.	FIG. NO.	DIMENSIONS (IN.)				
					A	B	C	D	E
3	GFXB3-24-S1	190	76,800	1	2.00	1.50	1.00	.13	.75
3	GFXB3-24-D1	190	76,800	2	2.00	3.00	1.00	.13	.63
2	GFXB5-24-S1	335	168,000	1	2.00	1.50	1.50	.19	.75
3	GFXB5-24-D1	335	168,000	2	2.00	3.00	1.50	.19	.63
2	GFXB5-24-S	335	168,000	1	3.00	1.50	1.50	.19	.75
1	GFXB5-24-D	335	168,000	2	3.00	3.00	1.50	.19	.63

ORDERING INFORMATION:
 • IF DIFFERENT FERRULE DIMENSIONS ARE DESIRED, CONSULT FACTORY
 • FOR LENGTHS OTHER THAN 24", CHANGE CATALOG NUMBER ACCORDINGLY



NOTES:

1. ALL DIMENSIONS IN INCHES UNLESS OTHERWISE SPECIFIED
2. MANUFACTURED FROM FLEXIBLE PURE COPPER FOR HIGH CONDUCTIVITY
3. BOTH BRAID AND FERRULES ARE TIN PLATED TO PROTECT AGAINST CORROSION
4. INSIDE ENDS OF SEAMLESS PURE COPPER FERRULES ARE CHAMFERED TO PREVENT STRAND DEGRADATION
5. IDEALLY SUITABLE FOR USE WHEREVER IS IT NECESSARY TO TAKE UP EXPANSION AND PROVIDE A RELIABLE GROUND CONNECTION
6. SIZE/COMBINATIONS NOT SHOWN ABOVE AND DRILLING CAN BE PROVIDED UPON REQUEST

QTY.	PT.	BODY	NAME OR DESCRIPTION
1			COPPER FLEXIBLE GROUNDING BRAID
REF. DWGS: 2N4B-4931 DRAWN BY: DT DATE: 7/17/2024 CHKD: PJO SCALE: 1:2 INTERPRET PER ASME Y14.5-2009 FILE: 2N4B H:\2N4B\GFXB_SERIES			
PENNUNION 229 WATERFORD STREET EDINBORO, PA. 16412 USA			
SIZE: B 1 0 0 0 GFXB SERIES			REV. -

THIS DOCUMENT CONTAINS INFORMATION PROPRIETARY TO PENN-UNION CO. LLC. IT IS SUBMITTED IN CONFIDENCE AND IS TO BE USED SOLELY FOR THE PURPOSE FOR WHICH IT IS FURNISHED AND MUST BE RETURNED UPON REQUEST. THIS DOCUMENT AND SUCH INFORMATION IS NOT TO BE REPRODUCED, TRANSMITTED, DISCLOSED, OR USED OTHERWISE IN WHOLE OR IN PART WITHOUT THE EXPRESS CONSENT OF PENN-UNION CO. LLC.