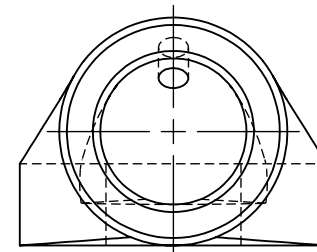
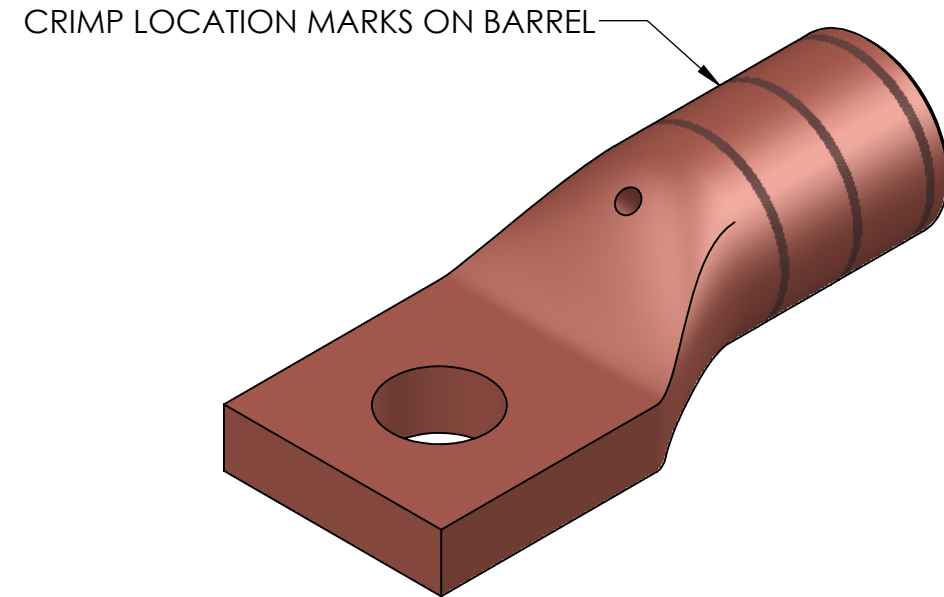
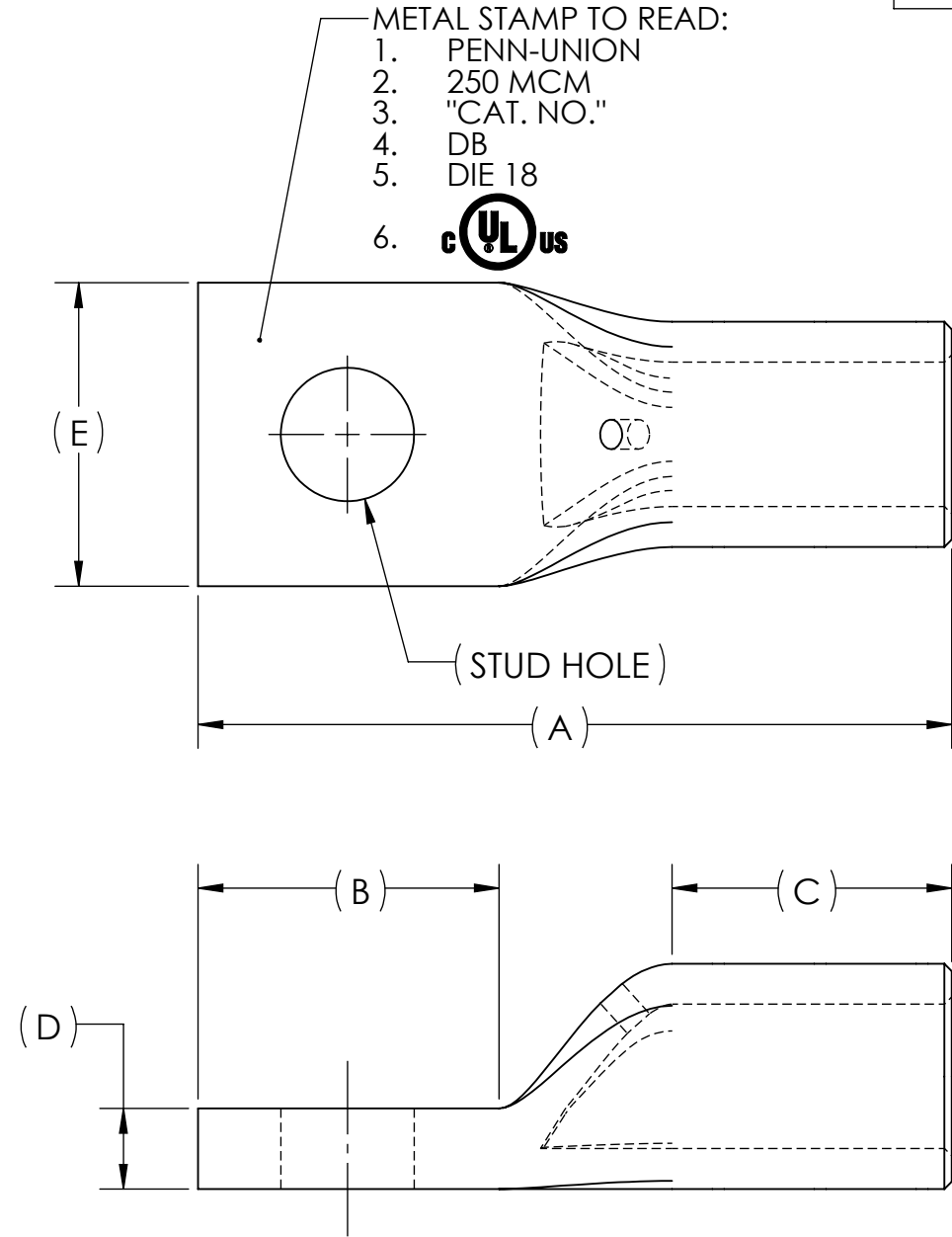


REV.	CAT. NO.	STUD HOLE	DIMENSIONS					APPROX. WEIGHT (LB)	STRIP LENGTH
			A	B	C	D	E		
01	HBBLU-025S-GND	1/2	3.18	1.27	1.18	.34	1.28	0.419	1.25



NOTES:

- ALL DIMENSIONS IN INCHES UNLESS OTHERWISE SPECIFIED
- FOR TIN PLATING, SUFFIX CATALOG NUMBER WITH "-TN"
- SEE INSTALLATION SHEET FOR WIRE SIZE AND TOOLING RECOMMENDATIONS
- RATED FOR COPPER CONDUCTORS ONLY
- BEVELED ENTRY FOR EASY CABLE INSERTION
- INSPECTION WINDOW TO ENSURE FULL CABLE INSERTION
- CONNECTORS ARE SUITABLE FOR VOLTAGES UP TO 35 KV
- FOR APPLICATIONS GREATER THAN 2000 VOLTS, CONSULT CABLE MANUFACTURER FOR VOLTAGE STRESS RELIEF INSTRUCTIONS
- CONNECTORS ARE cULus LISTED PER UL486A-B FOR POWER APPLICATIONS UP TO 90°C
- CONNECTORS ARE cULus LISTED FOR GROUNDING, BONDING, AND DIRECT BURIAL APPLICATIONS PER UL467

QTY.	PT.	NAME OR DESCRIPTION
X		COPPER TUBING
		<b>HEAVY DUTY COMPRESSION GROUNDING LUG</b> for 250 MCM AWG COPPER CONDUCTORS
REF. DWG'S: 5H37-96722		H:\5H37\HBBLU-025S-GND
DRAWN BY: DT		DATE: 8/18/2023
SCALE: 5:4		INTERPRET PER ASME Y14.5-2009
SIZE: B		FILE: 5H37
DWG. NO. <b>HBBLU-025S-GND</b>		REV. <b>-</b>

SEE TABLE

CAT. NO.

**PENNUNION**  
229 WATERFORD STREET  
EDINBORO, PA 16412 USA

NO.	ECN	DATE
REVISIONS		