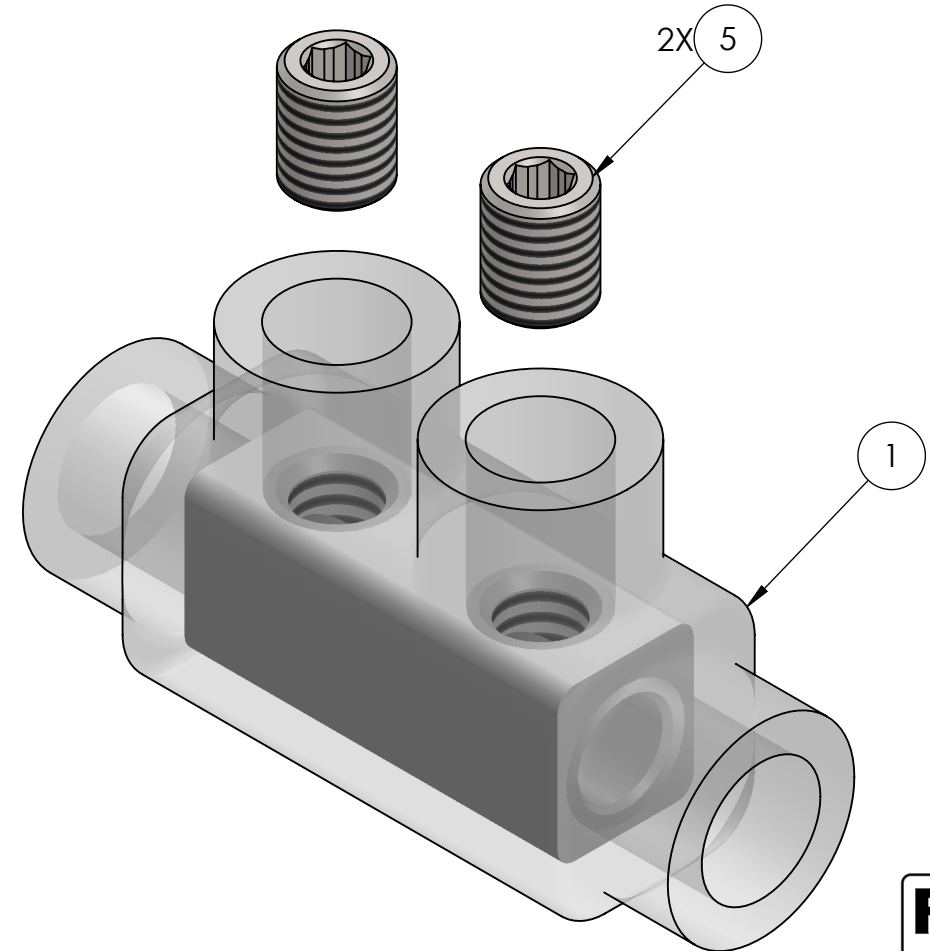
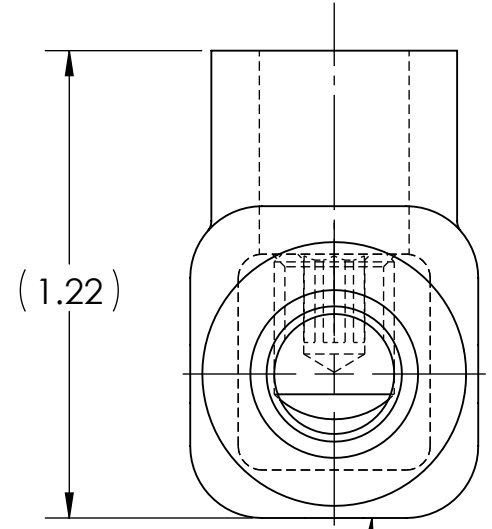
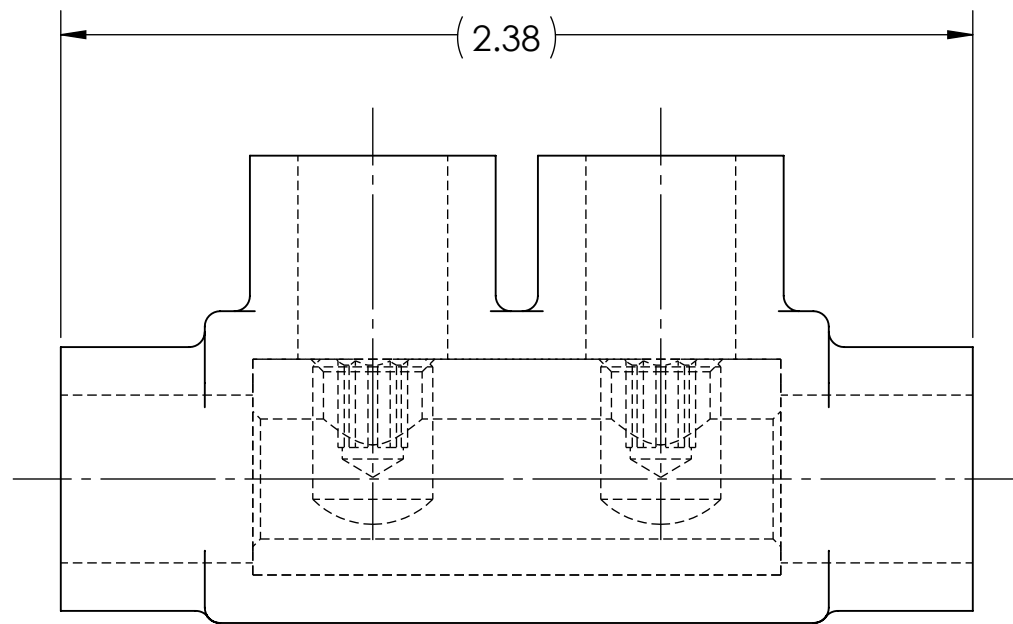
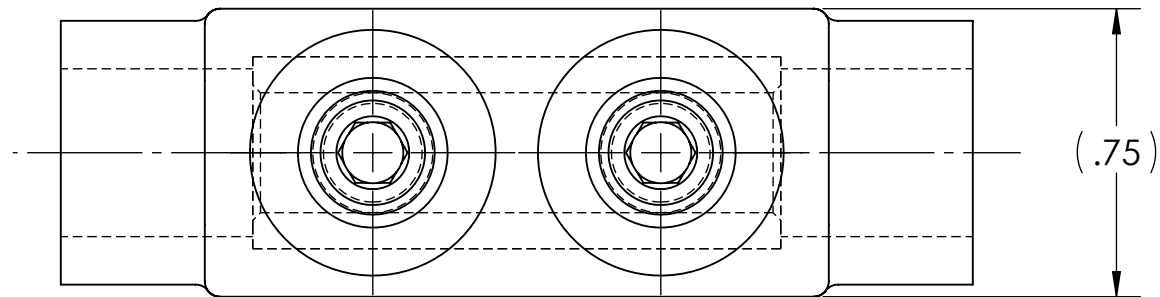


CONDUCTOR SIZE AND STRANDING					
CLASS B & C	CLASS G	CLASS H	CLASS I	CLASS K	DIESEL LOCOMOTIVE CABLE (DLO)
2 STR. - 14 SOL.	#4 (49/.0292) - #14 (49/.0092)	#4 (133/.0177) - #9 (133/.0099)	#4 (105/.0201) - #6 (63/.0201)	#4 (420/.0100) - #9 (133/.0100)	#4 (105/.0201) - #14 (19/.0142)



**RoHS**  
COMPLIANT

- NOTES:
- ALL DIMENSIONS IN INCHES UNLESS OTHERWISE SPECIFIED
  - CONDUCTOR RANGE: 2 STR - 14 SOL
  - SUITABLE FOR USE IN CABLE TRAYS, RACEWAYS, DUCTS, AND TROUGHS
  - INSULATION TEMPERATURE RATING: 135°C TO -40°C
  - PRE-FILLED WITH OXIDE INHIBITOR
  - SUPPLIED WITH REMOVABLE ACCESS PLUGS
  - PRE-INSULATED WITH CLEAR HIGH DIELECTRIC STRENGTH PLASTISOL
  - HEX SIZE: 5/32"
  - INSTALLATION TORQUE: 90 IN•LB
  - LISTED TO 486A-486B FOR ALUMINUM AND COPPER CONDUCTORS AT 90°C
  - APPROX. WEIGHT (EXCLUDING ITEMS 2, 3, AND 4): 0.074 LB

INK STAMPING:  
**PENN-UNION**  
**IISR-2**  
**2 STR - 14 SOL**  
**AL9CU**

NO.	ECN	DATE
1	11897	11/14/2019
REVISIONS		

	2	5	STEEL SET SCREW
	2	4	PLUGS FOR CONDUCTOR HOLE (NOT SHOWN)
	2	3	PLUGS FOR SCREW HOLE (NOT SHOWN)
	X	2	CUAL-GEL OXIDE INHIBITOR (NOT SHOWN)
	1	1	INSULATED ALUMINUM BODY
QTY.	PT.	NAME OR DESCRIPTION	
		<b>CLEAR INSULATED IN-LINE SPLICER/REDUCER</b> for 2 STR - 14 SOL	
REF. DWG'S: 4305-54930		H:\4305\54930_C	
 <b>PENN-UNION</b> 229 WATERFORD STREET EDINBORO, PA 16412 USA		DRAWN BY: QJB	DATE: 6/2/2021
		CHK'D: CLT	FILE: 4305
SCALE: 2:1	INTERPRET PER ASME Y14.5-2009		SIZE: B
DWG. NO. <b>IISR-2</b>	REV. <b>1</b>		