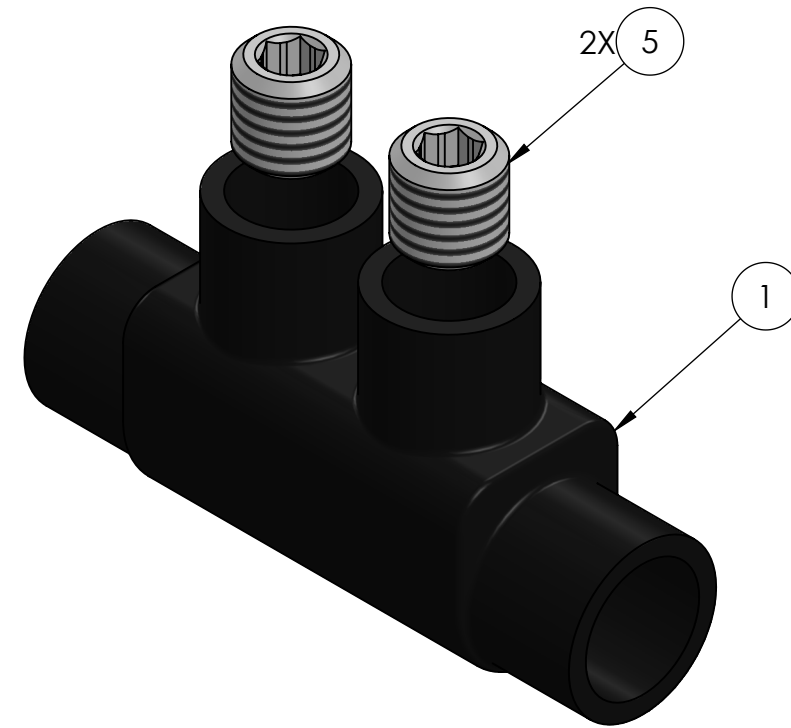
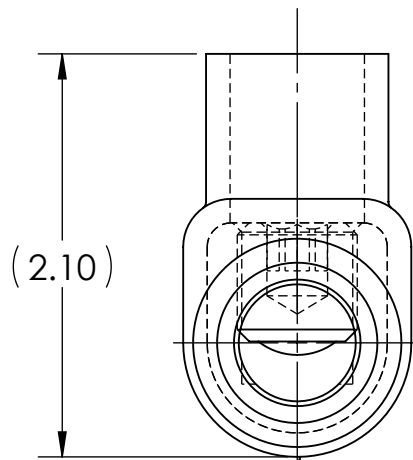
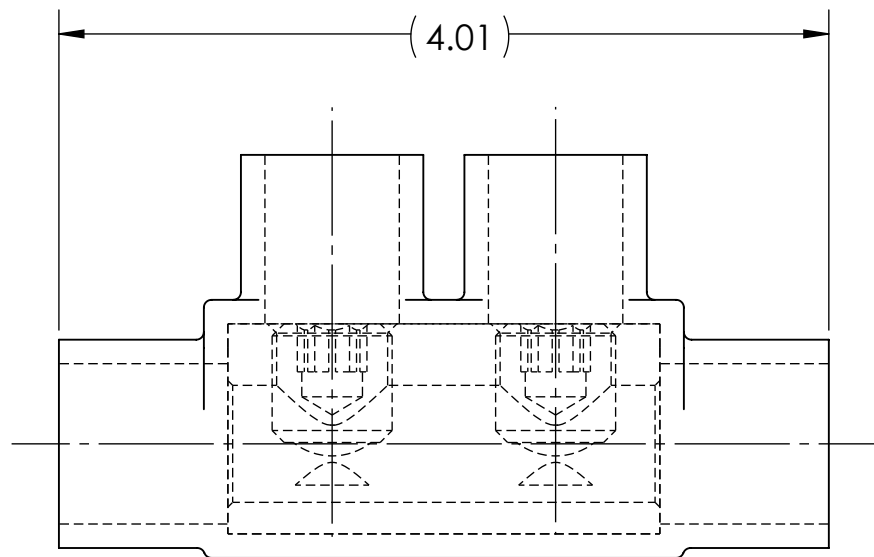
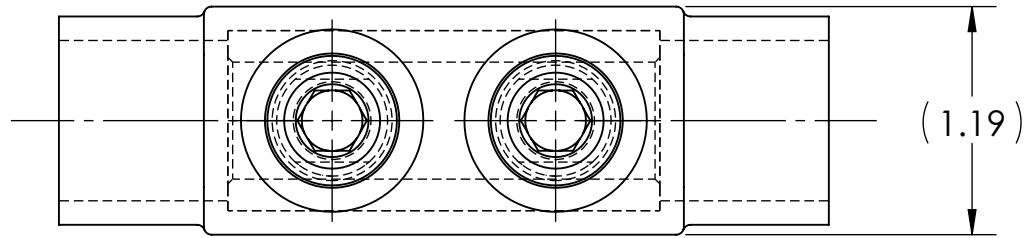


CONDUCTOR SIZE AND STRANDING					
CLASS B & C	CLASS G	CLASS H	CLASS I	CLASS K	DIESEL LOCOMOTIVE CABLE (DLO)
250 MCM - 10 SOL.	3/0 (133/.0355) - #10 (49/.0146)	3/0 (259/.0255) - #9 (133/.0099)	3/0 (418/.0201) - #6 (63/.0201)	3/0 (1666/.0100) - #9 (133/.0100)	3/0 (450/.0201) - #10 (27/.0201)



- NOTES:
- ALL DIMENSIONS IN INCHES UNLESS OTHERWISE SPECIFIED
 - CONDUCTOR RANGE: 250 MCM - 10 SOL
 - SUITABLE FOR USE IN CABLE TRAYS, RACEWAYS, DUCTS, AND TROUGHS
 - INSULATION TEMPERATURE RATING: 135°C TO -40°C
 - PRE-FILLED WITH OXIDE INHIBITOR
 - SUPPLIED WITH REMOVABLE ACCESS PLUGS
 - PRE-INSULATED WITH BLACK HIGH DIELECTRIC STRENGTH PLASTISOL
 - HEX SIZE: 5/16"
 - INSTALLATION TORQUE: 275 IN•LB
 - LISTED TO 486A-486B FOR ALUMINUM AND COPPER CONDUCTORS AT 90°C
 - APPROX. WEIGHT (EXCLUDING ITEMS 2, 3, AND 4): 0.250 LB

INK STAMPING:

PENN-UNION
IISRB-250
250 MCM - 10 SOL
 AL9CU

NO.	ECN	DATE
1	11897	11/14/2019
REVISIONS		

	2	5	ALUMINUM SET SCREW
	2	4	PLUGS FOR CONDUCTOR HOLE (NOT SHOWN)
	2	3	PLUGS FOR SCREW HOLE (NOT SHOWN)
	X	2	CUAL-GEL OXIDE INHIBITOR (NOT SHOWN)
	1	1	INSULATED ALUMINUM BODY
QTY.	PT.	NAME OR DESCRIPTION	
		BLACK INSULATED IN-LINE SPLICER/REDUCER for 250 MCM - 10 SOL	
REF. DWG'S: 4305-98052		H:\4305\98052_C	
 229 WATERFORD STREET EDINBORO, PA 16412 USA		DRAWN BY: QJB	DATE: 6/8/2021
		CHK'D: CLT	FILE: 4305
SCALE: 1:1		INTERPRET PER ASME Y14.5-2009	
SIZE: B		DWG. NO. IISRB-250	
		REV. 1	