
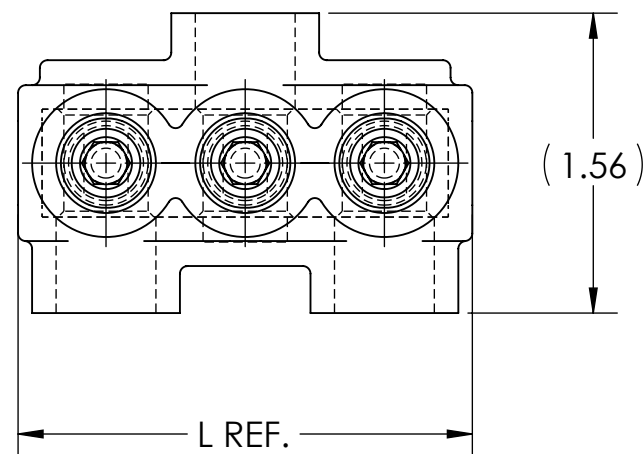


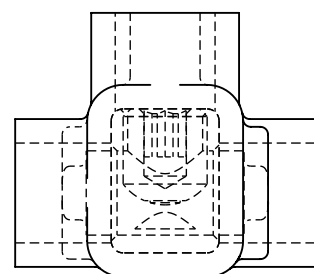
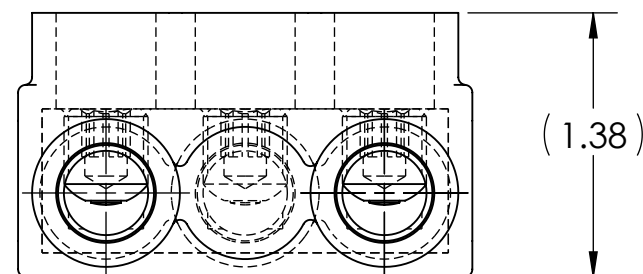
DWG. NO. **IPBB-NA2/0-A** REV. **2**

- NOTES:
1. ALL DIMENSIONS IN INCHES UNLESS OTHERWISE SPECIFIED
 2. CONDUCTOR RANGE: 2/0 STR - 14 SOL
 3. SUITABLE FOR USE IN PANEL BOARDS, CABLE TRAYS, RACEWAYS, DUCTS, AND TROUGHS
 4. INSULATION TEMPERATURE RATING: 135°C TO -40°C
 5. PRE-FILLED WITH OXIDE INHIBITOR
 6. SUPPLIED WITH REMOVABLE ACCESS PLUGS
 7. PRE-INSULATED WITH BLACK HIGH DIELECTRIC STRENGTH PLASTISOL
 8. HEX SIZE: 7/32"
 9. INSTALLATION TORQUE: 180 IN•LB

10.  LISTED TO 486A-486B FOR ALUMINUM AND COPPER CONDUCTORS AT 90°C
11. CONNECTORS ARE RATED AND LISTED FOR PARALLEL USE. PLEASE SEE PARALLEL RATING SHEET FOR SPECIFIC INFORMATION

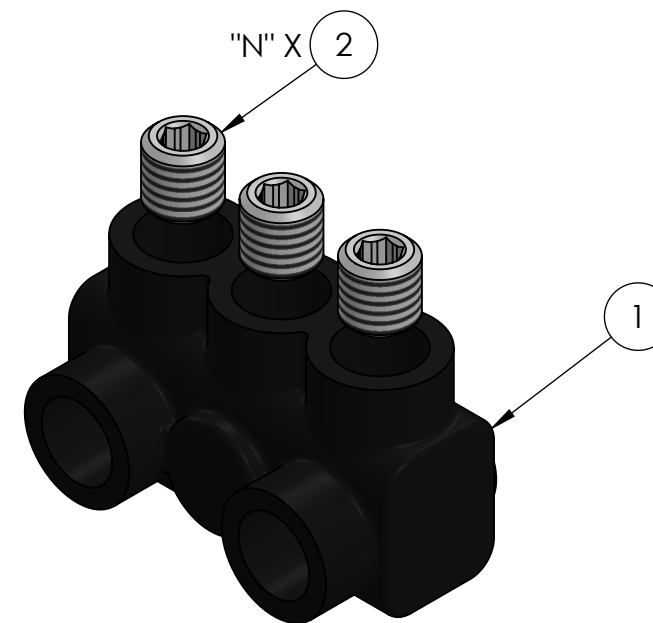


INK STAMPING:
PENN-UNION
 CAT. NO.
 2/0 STR - 14 SOL
 AL9CU



CAT. NO.	L REF.	N	NUMBER OF CONDUCTORS	APPROX. WEIGHT (LB)
IPBB-NA2/0-2A	1.64	2	2	0.089
IPBB-NA2/0-3A	2.37	3	3	0.131
IPBB-NA2/0-4A	3.09	4	4	0.173
IPBB-NA2/0-5A	3.82	5	5	0.215
IPBB-NA2/0-6A	4.54	6	6	0.256
IPBB-NA2/0-8A	5.99	8	8	0.340
IPBB-NA2/0-10A	7.44	10	10	0.424
IPBB-NA2/0-12A	8.89	12	12	0.508
IPBB-NA2/0-14A	10.34	14	14	0.592

- NOTES:
1. APPROX. WEIGHT EXCLUDES ITEMS 3 AND 4
 2. CONDUCTOR PORTS ARE "N" QUANTITY, VIEWS BELOW ARE FOR REFERENCE ONLY




RoHS
COMPLIANT

	2N	4	PLASTIC PLUG (NOT SHOWN)
	X	3	CUAL GEL OXIDE INHIBITOR (NOT SHOWN)
	N	2	ALUMINUM SET SCREW
	1	1	INSULATED ALUMINUM BODY

QTY.	PT.	NAME OR DESCRIPTION
		BLACK INSULATED POWER BAR for 2/0 STR - 14 SOL

REF. DWG'S: 4304-98058S3 H:\4304\98058S3_C

 DRAWN BY: QJB DATE: 6/9/2021 CHK'D: CLT

SCALE: 1:1 INTERPRET PER ASME Y14.5-2009 FILE: 4304

SIZE: B DWG. NO. **IPBB-NA2/0-A** REV. **2**

229 WATERFORD STREET
EDINBORO, PA 16412 USA

CONDUCTOR SIZE AND STRANDING					
CLASS B & C	CLASS G	CLASS H	CLASS I	CLASS K	DIESEL LOCOMOTIVE CABLE (DLO)
2/0 STR. - 14 SOL.	#1 (133/.0251) - #14 (49/.0092)	#1 (259/.0180) - #9 (133/.0099)	#1 (210/.0201) - #6 (63/.0201)	#1 (836/.0100) - #9 (133/.0100)	#1 (225/.0201) - #14 (19/.0142)

NO.	ECN	DATE
2	11881	12/27/2019
1	11530	2/9/2015

REVISIONS