
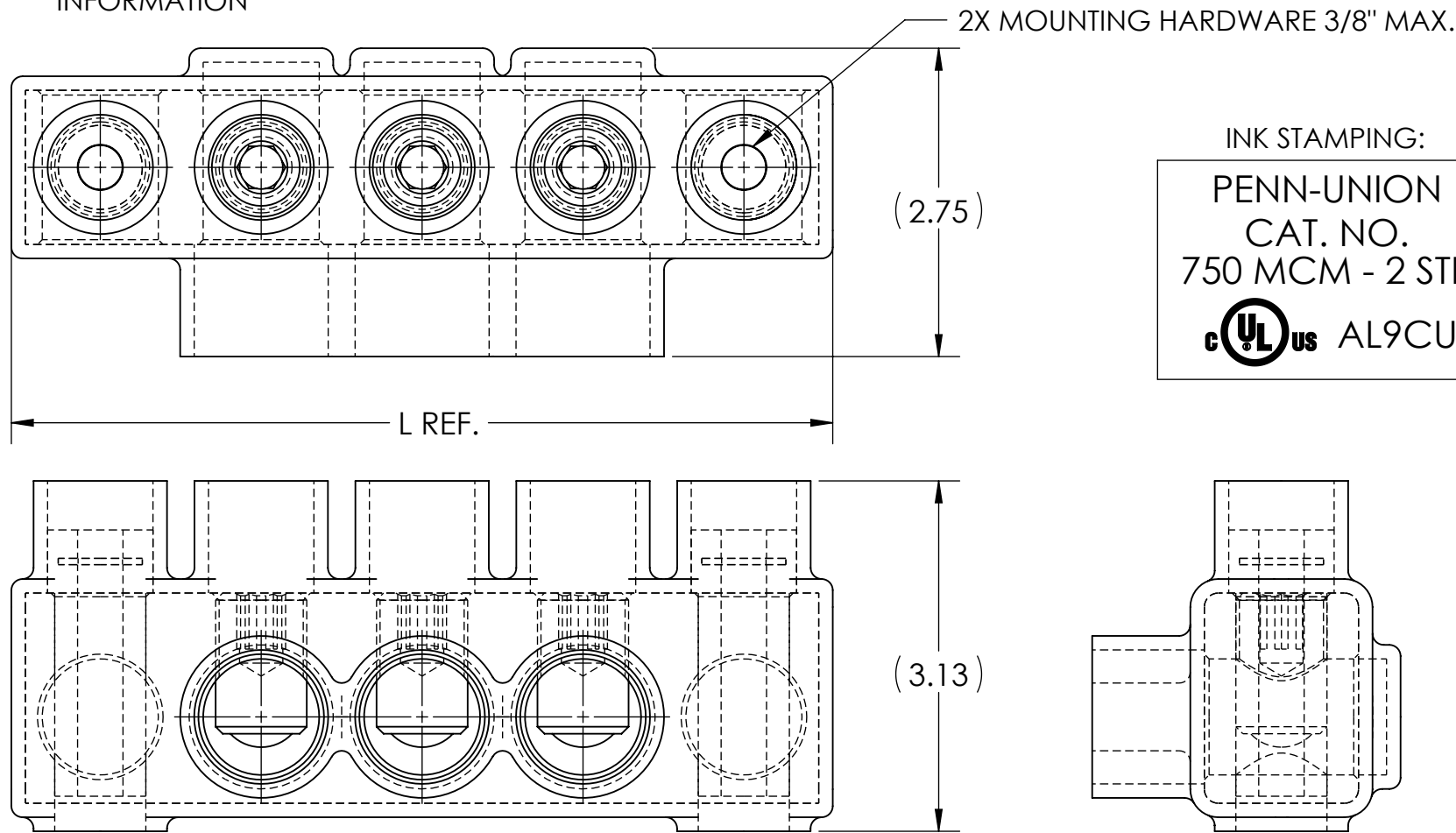



DWG. NO. **IPBM-NA750-S** REV. **5**

- NOTES:
1. ALL DIMENSIONS IN INCHES UNLESS OTHERWISE SPECIFIED
  2. CONDUCTOR RANGE: 750 MCM - 2 STR
  3. DESIGNED FOR APPLICATIONS WHERE SECURE MOUNTING OF CONNECTOR IS REQUIRED
  4. SUITABLE FOR USE IN PANEL BOARDS, CABLE TRAYS, RACEWAYS, DUCTS, AND TROUGHS
  5. INSULATION TEMPERATURE RATING: 135°C TO -40°C
  6. PRE-FILLED WITH OXIDE INHIBITOR
  7. SUPPLIED WITH REMOVABLE ACCESS PLUGS
  8. PRE-INSULATED WITH CLEAR HIGH DIELECTRIC STRENGTH PLASTISOL
  9. HEX SIZE: 3/8"
  10. INSTALLATION TORQUE: 550 IN•LB

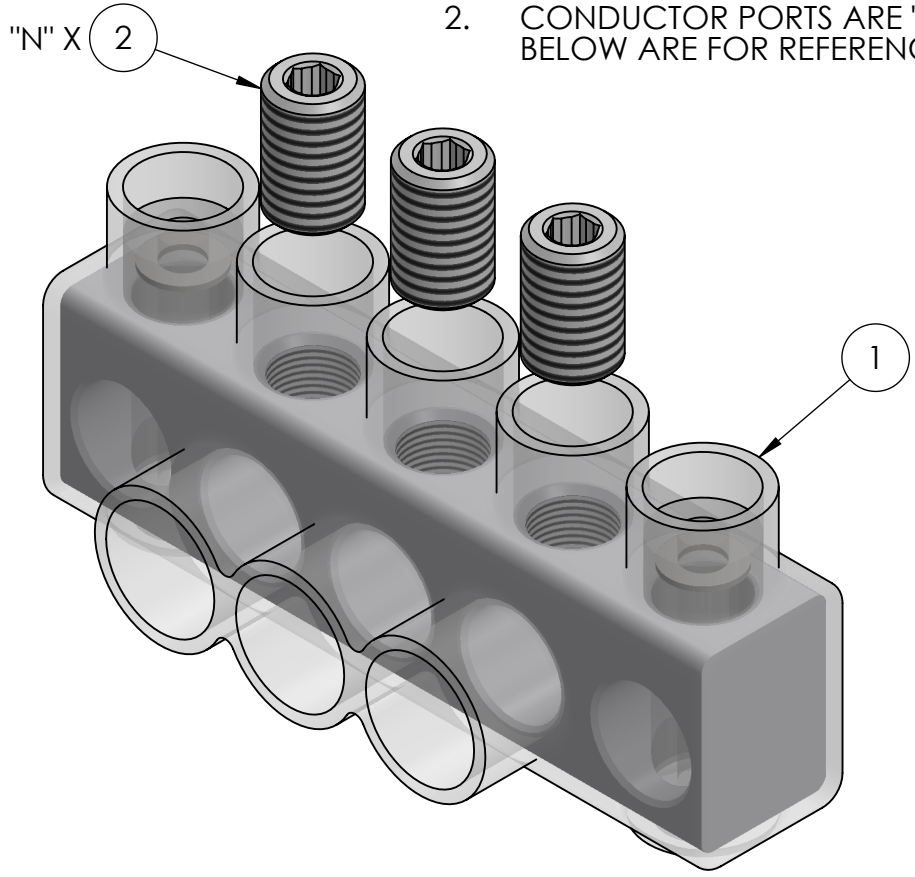
11.  LISTED TO 486A-486B FOR ALUMINUM AND COPPER CONDUCTORS AT 90°C
12. CONNECTORS ARE RATED AND LISTED FOR PARALLEL USE. PLEASE SEE PARALLEL RATING SHEET FOR SPECIFIC INFORMATION



INK STAMPING:  
**PENN-UNION**  
 CAT. NO.  
 750 MCM - 2 STR  
 AL9CU

CAT. NO.	L REF.	N	NUMBER OF CONDUCTORS	APPROX. WEIGHT (LB)
IPBM-NA750-2S	5.89	2	2	1.347
IPBM-NA750-3S	7.33	3	3	1.711
IPBM-NA750-4S	8.76	4	4	2.064
IPBM-NA750-5S	10.20	5	5	2.423
IPBM-NA750-6S	11.63	6	6	2.782
IPBM-NA750-8S	14.50	8	8	3.500
IPBM-NA750-10S	17.37	10	10	4.217
IPBM-NA750-12S	20.24	12	12	4.935

- NOTES:
1. APPROX. WEIGHT EXCLUDES ITEMS 3 AND 4
  2. CONDUCTOR PORTS ARE "N" QUANTITY, VIEWS BELOW ARE FOR REFERENCE ONLY



**RoHS**  
COMPLIANT

CONDUCTOR SIZE AND STRANDING					
CLASS B & C	CLASS G	CLASS H	CLASS I	CLASS K	DIESEL LOCOMOTIVE CABLE (DLO)
750 MCM - 2 STR.	500 MCM (259/.0439) - #2 (49/.0368)	500 MCM (427/.0342) - #2 (259/.0160)	500 MCM (1225/.0201) - #2 (161/.0201)	500 MCM (5054/.0100) - #2 (665/.0100)	535 MCM (1325/.0201) - #2 (150/.0201)

NO.	ECN	DATE
5	12086	6/1/2021
4	11908	1/2/2020
3	11841	4/2/2019
2	11675	12/20/2016
1	11576	6/19/2015

QTY.	PT.	NAME OR DESCRIPTION
	2N	4 PLASTIC PLUG (NOT SHOWN)
	X	3 CUAL-GEL OXIDE INHIBITOR (NOT SHOWN)
	N	2 ALUMINUM SET SCREW
	1	1 INSULATED ALUMINUM BODY

**CLEAR INSULATED MOUNTABLE POWER BAR**  
for  
750 MCM - 2 STR

REF. DWG'S: 4304-55777S9 H:\4304\55777S9\_C

**PENNUNION**  
229 WATERFORD STREET  
EDINBORO, PA 16412 USA

DRAWN BY: QJB DATE: 6/15/2021 CHK'D: CLT  
 SCALE: 2:3 INTERPRET PER ASME Y14.5-2009 FILE: 4304  
 SIZE: B DWG. **IPBM-NA750-S** REV. **5**