
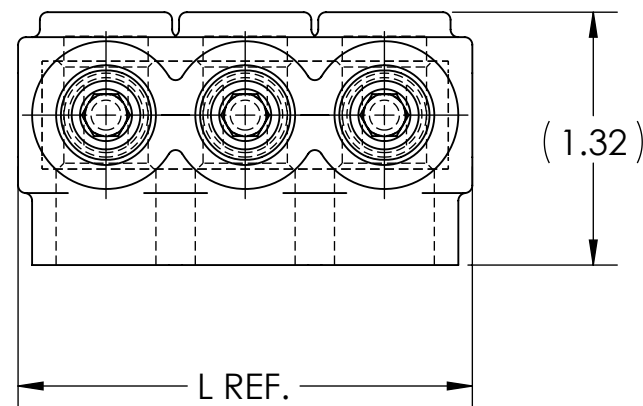



- NOTES:
1. ALL DIMENSIONS IN INCHES UNLESS OTHERWISE SPECIFIED
 2. CONDUCTOR RANGE: 2/0 STR - 14 SOL
 3. SUITABLE FOR USE IN PANEL BOARDS, CABLE TRAYS, RACEWAYS, DUCTS, AND TROUGHS
 4. INSULATION TEMPERATURE RATING: 135°C TO -40°C
 5. PRE-FILLED WITH OXIDE INHIBITOR
 6. SUPPLIED WITH REMOVABLE ACCESS PLUGS
 7. PRE-INSULATED WITH CLEAR HIGH DIELECTRIC STRENGTH PLASTISOL
 8. HEX SIZE: 7/32"
 9. INSTALLATION TORQUE: 180 IN•LB

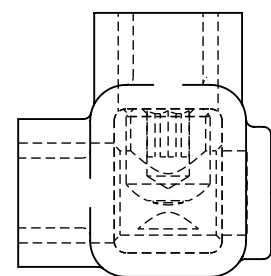
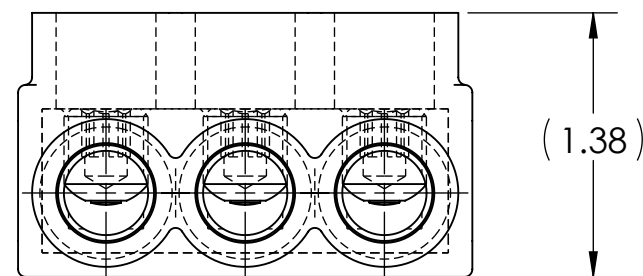
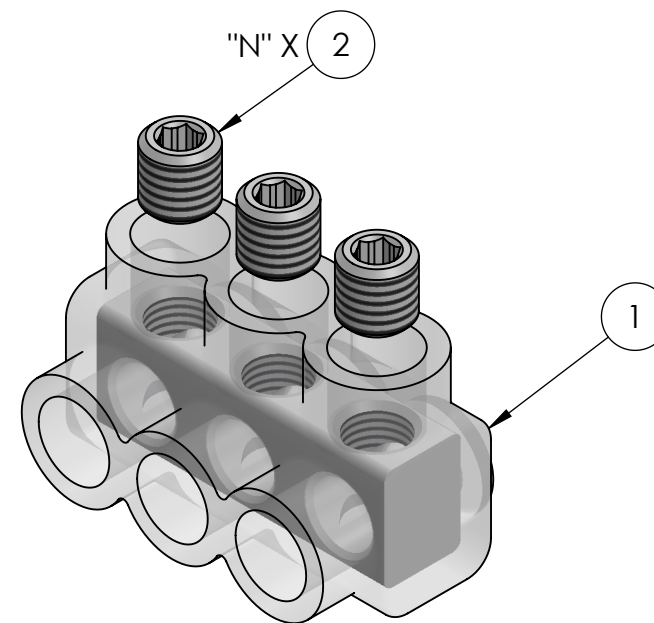
10.  LISTED TO 486A-486B FOR ALUMINUM AND COPPER CONDUCTORS AT 90°C
11. CONNECTORS ARE RATED AND LISTED FOR PARALLEL USE. PLEASE SEE PARALLEL RATING SHEET FOR SPECIFIC INFORMATION

CAT. NO.	L REF.	N	NUMBER OF CONDUCTORS	APPROX. WEIGHT (LB)
IPB-NA2/0-2S	1.64	2	2	0.089
IPB-NA2/0-3S	2.37	3	3	0.131
IPB-NA2/0-4S	3.09	4	4	0.172
IPB-NA2/0-5S	3.82	5	5	0.214
IPB-NA2/0-6S	4.54	6	6	0.256
IPB-NA2/0-8S	5.99	8	8	0.339
IPB-NA2/0-10S	7.44	10	10	0.423
IPB-NA2/0-12S	8.89	12	12	0.506
IPB-NA2/0-14S	10.34	14	14	0.590

- NOTES:
1. APPROX. WEIGHT EXCLUDES ITEMS 3 AND 4
 2. CONDUCTOR PORTS ARE "N" QUANTITY, VIEWS BELOW ARE FOR REFERENCE ONLY




INK STAMPING:
PENN-UNION
 CAT. NO.
2/0 STR - 14 SOL
 **AL9CU**



QTY.	PT.	NAME OR DESCRIPTION
2N	4	PLASTIC PLUG (NOT SHOWN)
X	3	CUAL GEL OXIDE INHIBITOR (NOT SHOWN)
N	2	ALUMINUM SET SCREW
1	1	INSULATED ALUMINUM BODY

CLEAR INSULATED POWER BAR
 for
2/0 STR - 14 SOL

REF. DWG'S: 4304-98196S1 H:\4304\98196S1_C

 DRAWN BY: QJB DATE: 6/9/2021 CHK'D: CLT

SCALE: 1:1 INTERPRET PER ASME Y14.5-2009 FILE: 4304

SIZE: B DWG. NO. **IPB-NA2/0-S** REV. **2**

229 WATERFORD STREET
 EDINBORO, PA 16412 USA

CONDUCTOR SIZE AND STRANDING					
CLASS B & C	CLASS G	CLASS H	CLASS I	CLASS K	DIESEL LOCOMOTIVE CABLE (DLO)
2/0 STR. - 14 SOL.	#1 (133/.0251) - #14 (49/.0092)	#1 (259/.0180) - #9 (133/.0099)	#1 (210/.0201) - #6 (63/.0201)	#1 (836/.0100) - #9 (133/.0100)	#1 (225/.0201) - #14 (19/.0142)

NO.	ECN	DATE
2	11881	12/27/2019
1	11530	2/9/2015

REVISIONS